



Motorola Moto G4 Speaker Replacement

Over time, the speaker on the Motorola Moto G4 can crackle or distort audio. This guide will show you how to replace the speaker.

Written By: Kierra Schau



INTRODUCTION

Over time, the speaker on the Motorola Moto G4 can crackle or distort audio. This guide will show you how to replace the speaker.



TOOLS:

- [Spudger](#) (1)
- [T3 Torx Screwdriver](#) (1)
- [Tweezers](#) (1)



PARTS:

- [motorola moto g4 speaker](#) (1)

Step 1 — Back Cover



- Insert a fingernail or a spudger into the notch on the bottom edge of the phone, near the charge port.
- Gently twist or pry to open a small gap between the back cover and the body of the phone.
- While keeping your tool (or fingernail) inserted into the gap between the back cover and the body of the phone, slide it around the corner to begin loosening the plastic clips holding the cover in place.

Step 2



- Slide your tool all along the side of the phone to separate more of the clips securing the back cover.

Step 3



- Keep your tool inserted slightly under the back cover, and slide it around the top corner.
- If necessary, continue prying around the remaining edges of the phone until the back cover comes free.

Step 4



- Remove the back cover.
- ☛ To install the back cover, carefully position it over the phone and then press gently all around the edges until you feel the clips snap into place.

Step 5 — Midframe



- Push to eject and remove the MicroSD and SIM cards (if installed).

Step 6



- Use a spudger to pry up the rubber cover for the camera flash connector.

Step 7



- Remove the rubber cover.

Step 8



- Use a spudger to disconnect the camera flash connector by prying it straight up.

Step 9



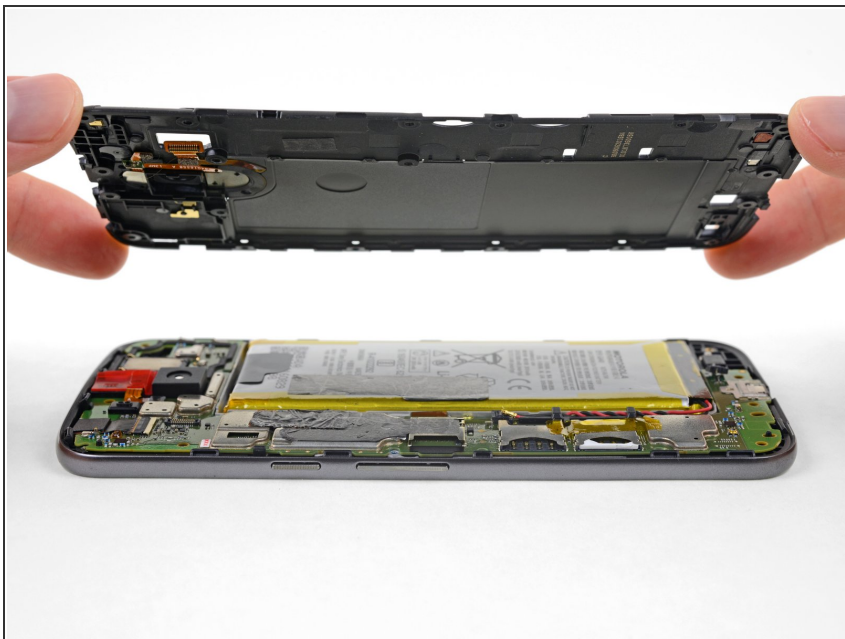
- Use a T3 Torx driver to remove the nineteen identical 3.1 mm screws securing the midframe.

Step 10



- Insert a spudger under the midframe at the top left corner, and gently twist to separate it from the body of the phone.

Step 11



- Remove the midframe.

Step 12 — Battery Disconnection



- Insert a thin tool (such as one of your tweezer tips) under the red and black battery wires, and slide it underneath the battery connector.
 - Gently pry straight up to disconnect the battery.
- ⚠ Pry only from the side where the wires attach to the connector—if you pry anywhere else, you may break the socket.
- ➡ During reassembly, align the connector in its socket and then press straight down to reconnect it, wiggling slightly as you press to help it seat correctly.

Step 13 — Speaker



- Strong adhesive secures the earpiece speaker. If necessary, apply heat or a few drops of isopropyl alcohol to help weaken the adhesive and make it easier to remove.
- Pry up the speaker with a pry tool or a pair of tweezers. Be careful not to damage any surrounding components.
- ⚠ If you plan to re-use the speaker, be careful not to pry at it anywhere other than on its black plastic frame, as the speaker is easily damaged.
- 🔧 Check the condition of the adhesive around the bottom of the earpiece speaker when you reinstall it. A little heat from a hair dryer or iOpener can help soften the adhesive and make it sticky again.
- ⚠ The back of the speaker is magnetic. Be careful to not touch it to other parts of the motherboard.

To reassemble your device, follow these instructions in reverse order.