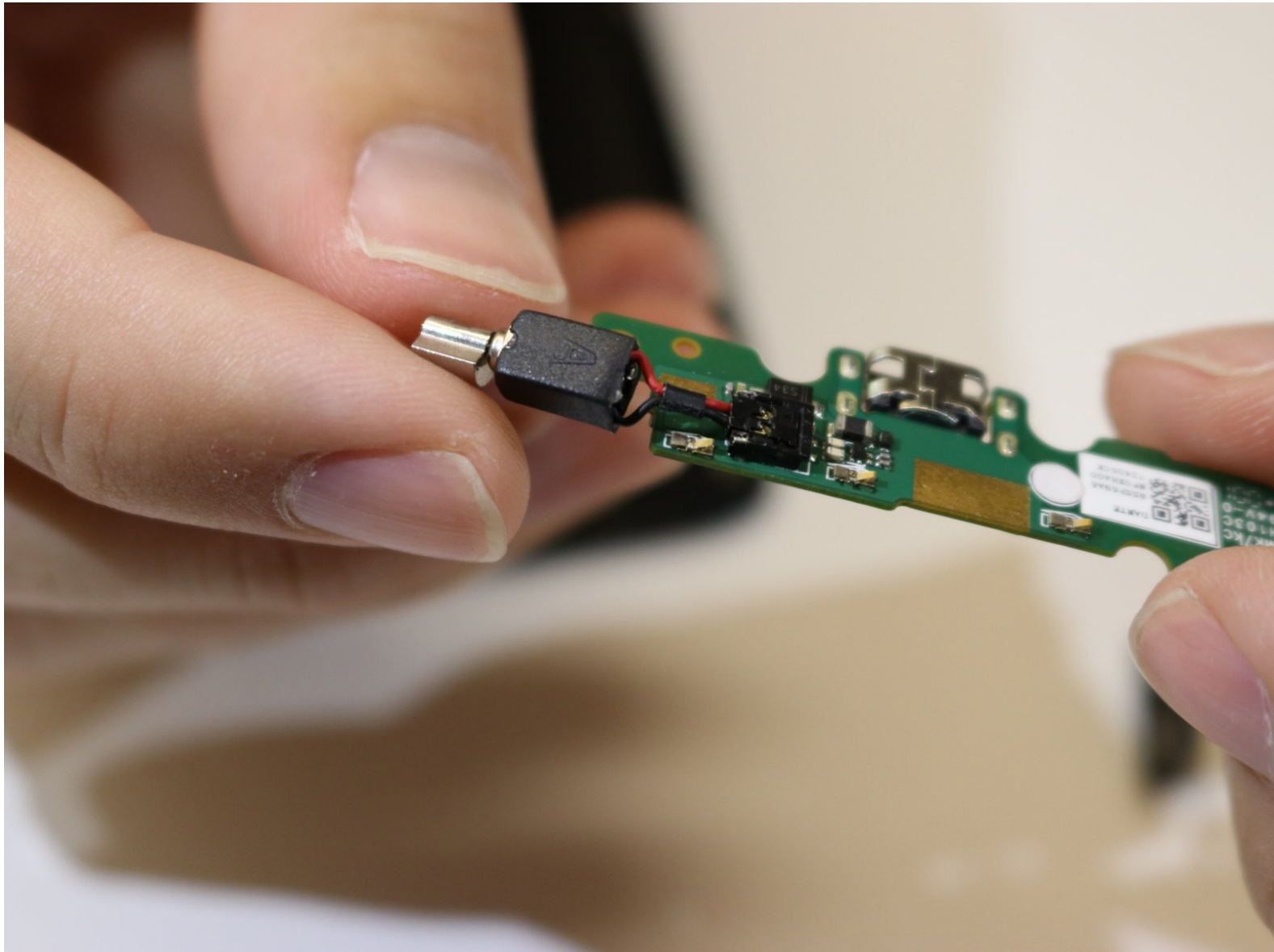




Motorola Moto G5 Vibration Motor Replacement

This is a guide to removing the vibration motor of the Motorola Moto G5.

Written By: Miles Cobb



INTRODUCTION

Does your device not vibrate as it should? Do you think your vibration motor is broken? In this guide we will describe how to remove this part.



TOOLS:

- [Spudger](#) (1)
 - [Tweezers](#) (1)
 - [Phillips #00 Screwdriver](#) (1)
-

Step 1 — Back Cover



- Insert your fingernail or the flat end of a spudger into the notch on the bottom edge of the phone near the charging port.
- Pry with your fingernail or twist the spudger to release the back cover from the phone.

Step 2



- Insert the flat end of a spudger into the seam and slide it along the bottom edge to release the clips holding the back cover to the phone.

Step 3



- Continue sliding the flat end of the spudger along the seam for the remaining sides of the phone.

Step 4



- Lift the back cover and remove it from the phone.

- ☑ To reinstall the back cover, align the cover with the phone and squeeze along the edges to snap the clips back into place.

Step 5 — Battery



- Insert your fingernail or the flat end of the spudger into the notch below the battery.
- Pry with your fingernail or spudger until you free the battery from its recess.

Step 6



- Remove the battery.
- ★ When installing the battery, make sure the battery's contacts line up with the three gold pins on the top right.

Step 7 — Vibration Motor



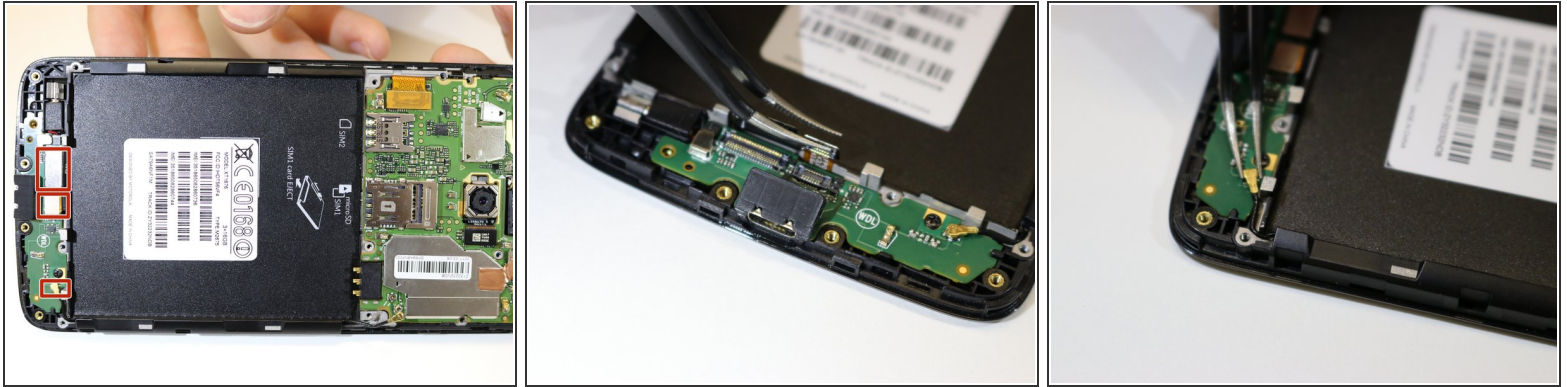
- Remove the nine (9) 4mm Philips screws securing the daughterboard cover.

Step 8



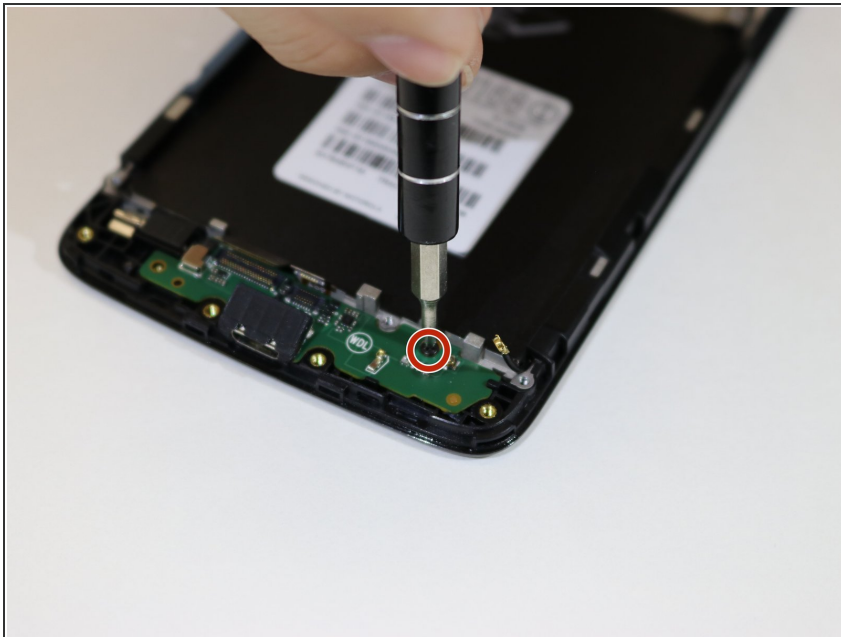
- Remove the plastic casing on the bottom of the phone by gently pulling.

Step 9



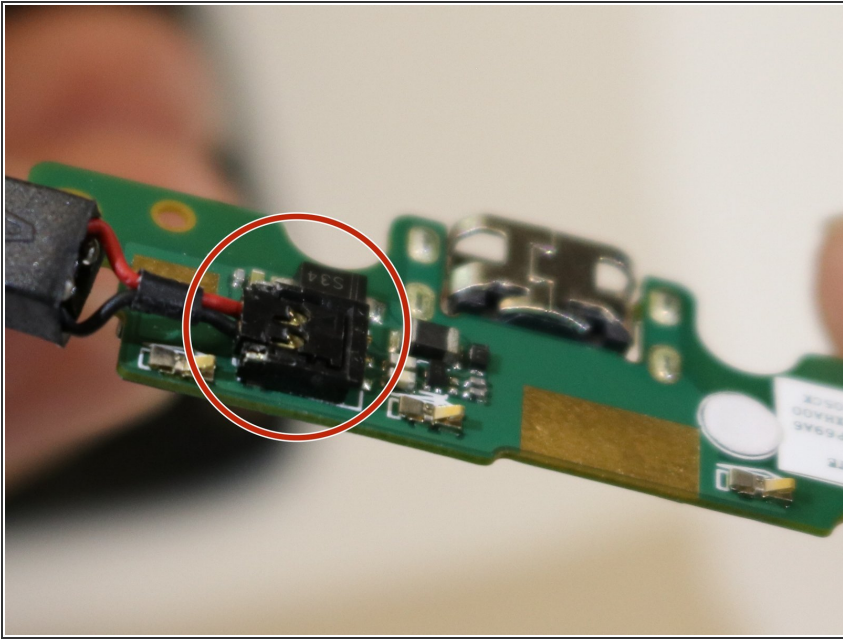
- Remove the three connectors on the board below the battery slow by gently pulling on the small gold tab with a pair of tweezers.

Step 10



- Remove the 3.4 mm Philips screw securing the daughterboard to the frame.

Step 11



- Use the point of a spudger to lift the vibration motor connector up out of the socket on the I/O board.
- ⚠ Be very careful to pry only on the connector under the red and black cables, **not on the socket itself**.

To reassemble your device, follow these instructions in reverse order.