



Motorola Moto G5s Plus Battery Replacement

This guide will show you how to how to access and replace the battery inside your Motorola Moto G5s Plus.

Written By: Kevin George



INTRODUCTION


The battery in the Motorola Moto G5s is sealed inside the phone housing. In the instance that you have to replace a faulty battery, there is a specific procedure that you have to follow.

TOOLS:

- [T5 Torx Screwdriver](#) (1)
 - [Suction Handle](#) (1)
 - [Heat Gun](#) (1)
 - [iFixit Opening Tools](#) (1)
 - [Nylon spudger](#) (1)
-

Step 1 — Display



 Power off the phone before you begin.

- Bring the heat gun one to two inches from the edges of the display to melt the display adhesive.
- Spend equal amounts of time applying heat around the entire edge of the phone.

Step 2




- Attach the suction cup to the display slightly to the left of center.
- Exert a moderate force to pull on the suction cup. The display will come loose.

Step 3





- Insert the opening tool inside the loosened edge.
- Gradually work the opening tool around the edge of the entire screen to cut through the adhesive.

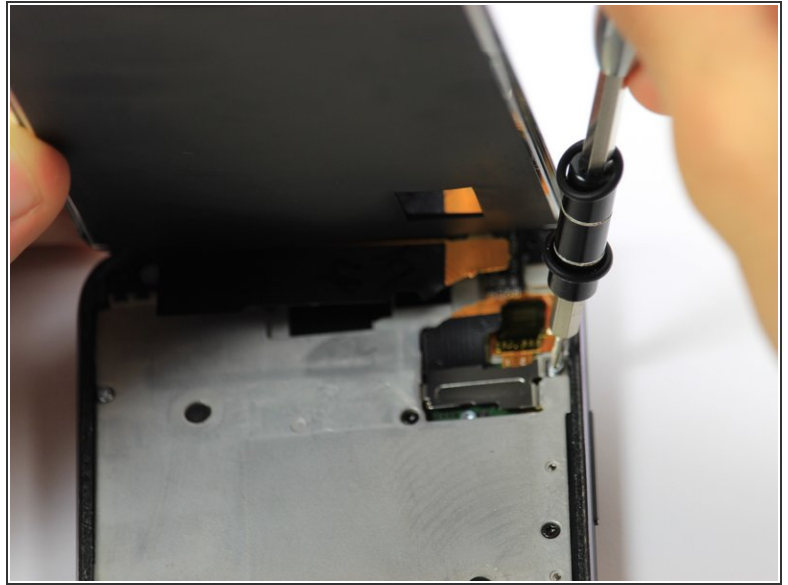
 Do not wedge the opening tool too far beneath the screen. Using too much force can result in torn connector cables.


Step 4



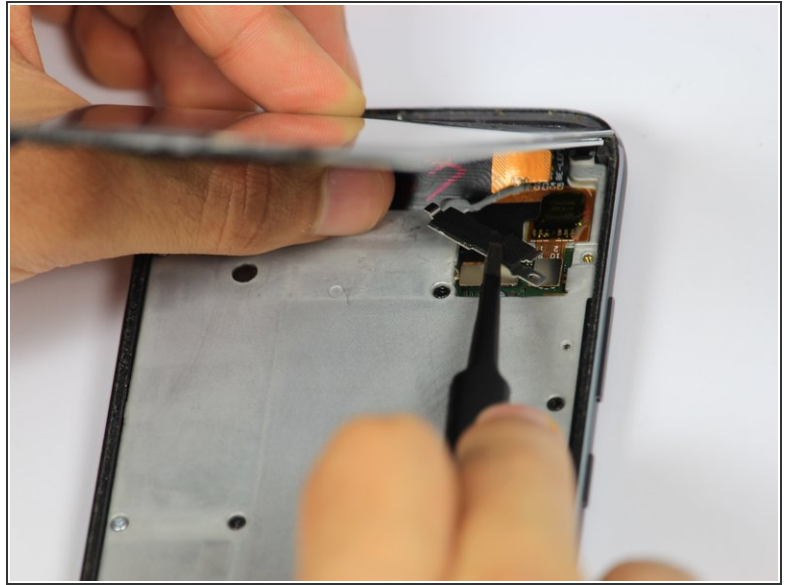
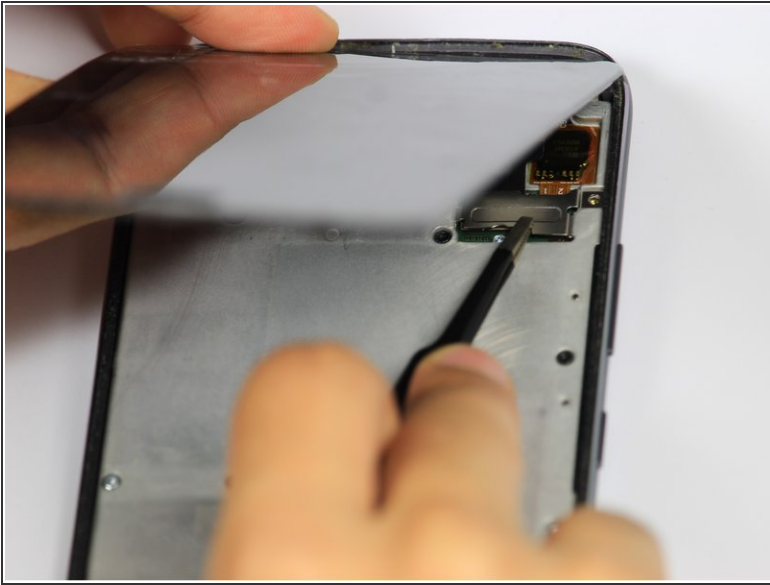
-  The display should now be entirely loose, attached only by the connectors at the top of the device and the fingerprint sensor connector at the bottom of the device.
- Press down on the fingerprint sensor with the display slightly raised to disconnect it from the display.
-  If the fingerprint sensor does not come loose, use the heat gun to loosen its adhesive.

Step 5



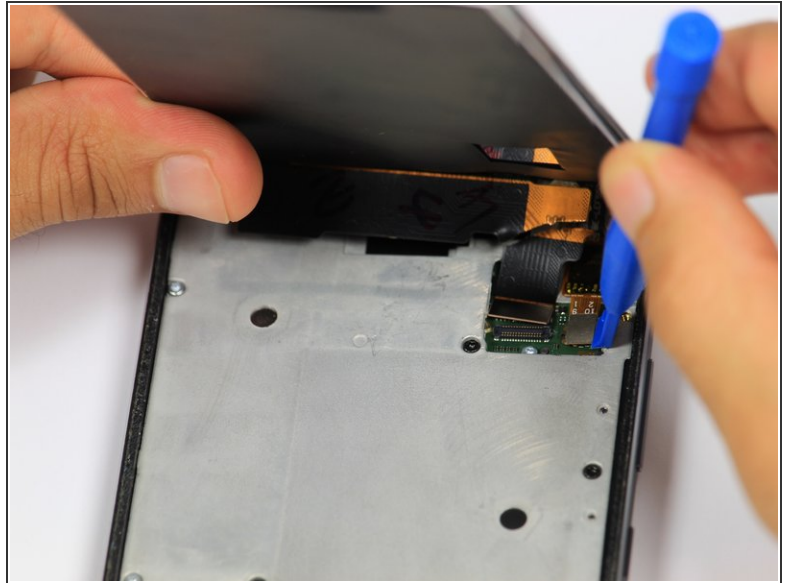
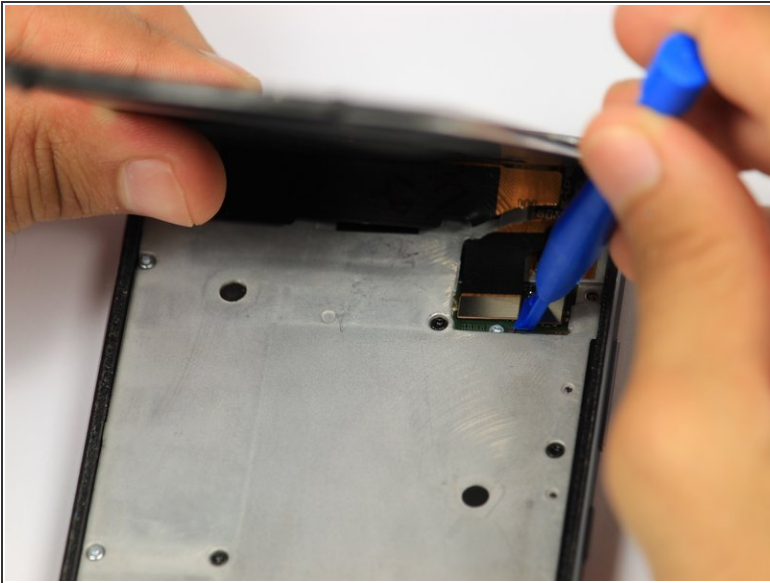
-  The cables at the top of the device are fragile. If you are using this guide as a prerequisite for replacing another part, be careful not to tear the cables while lifting the screen.
- Remove the one 5mm Torx-5 screw located by the connector cables in the top right corner of the device.

Step 6



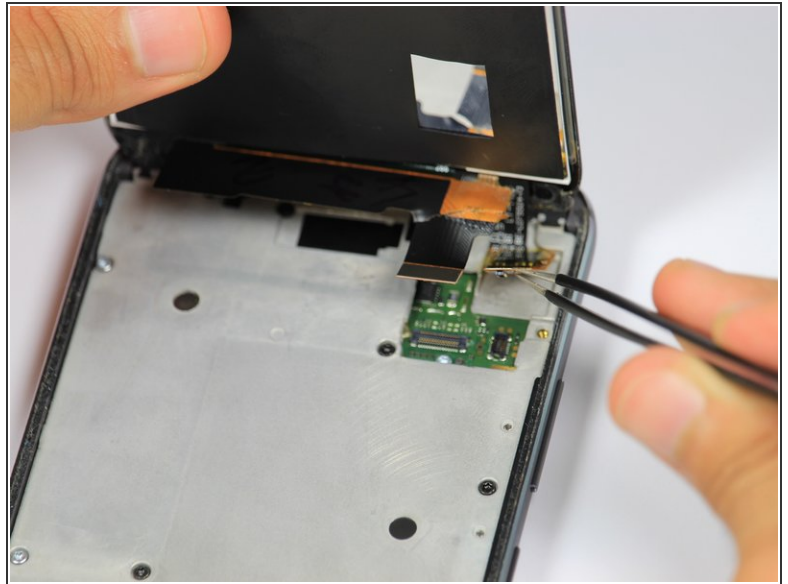
- Grab the unscrewed metal plate with your blunt tweezers.
 - Slide the metal plate to the left and then out to remove it.
- i** Removing the plate will expose the display assembly's connection to the phone's motherboard.

Step 7



- Disengage the two cable connectors by gently prying beneath the edge of the connector with the opening tool.

Step 8



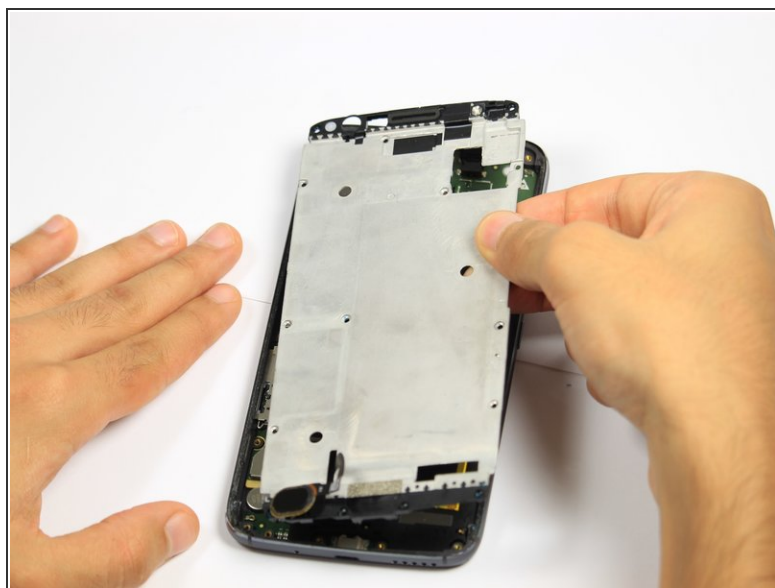
- Lift up the detached right connector from its housing using blunt tweezers.
- ⓘ The housing has light adhesive underneath it. Use a small amount of force to remove the connector from the housing.

Step 9 — Fingerprint Sensor



- Remove the nine black 5mm Torx-5 screws.
- Remove the seven silver 5mm Torx-5 screws.

Step 10



- Remove the metal cover by prying underneath it with the opening tool.

Step 11



- Grab ahold of the fingerprint sensor and push it through the opening in the metal cover.

Step 12



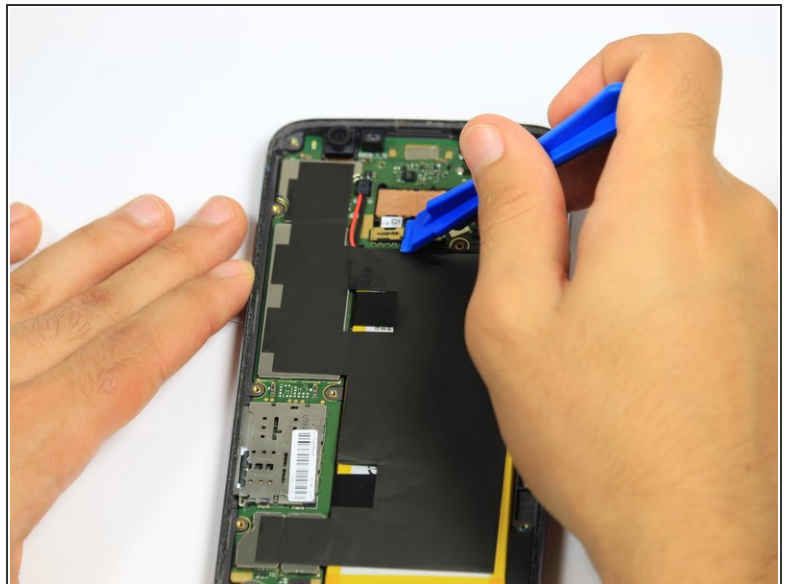
- Remove the fingerprint connector by gently prying underneath the connector with the opening tool.

Step 13 — Battery



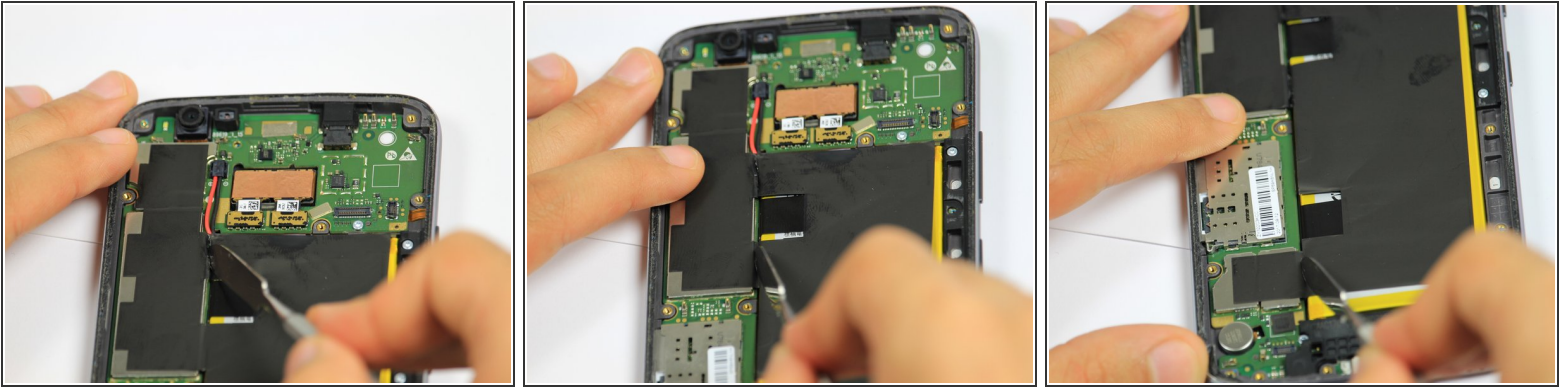
- The battery is now fully exposed and ready to be removed.

Step 14



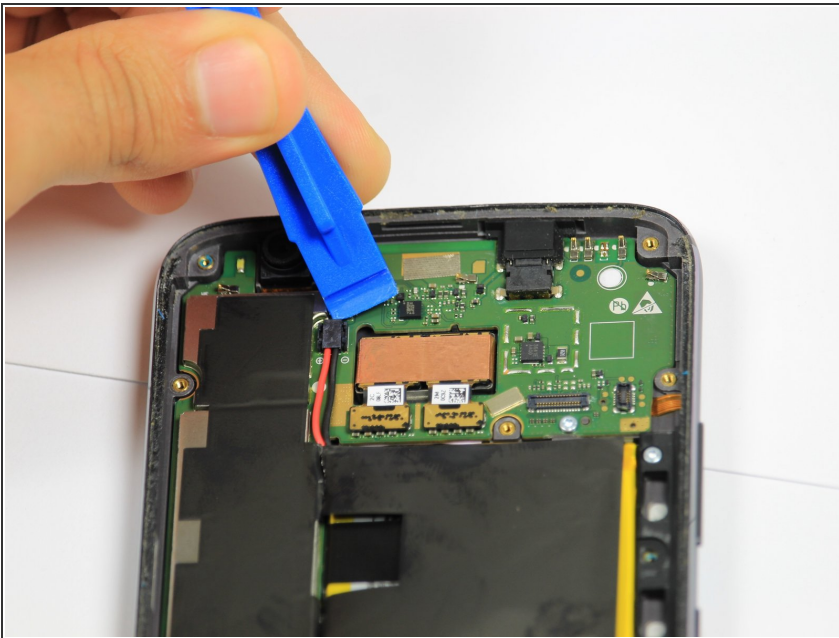
- Use the opening tool to remove the two metal connectors located above the battery.
- Apply a gentle upward pressure to loosen the metal plates.

Step 15



- Using the spudger, cut downwards along the black tape on left side of the battery.

Step 16



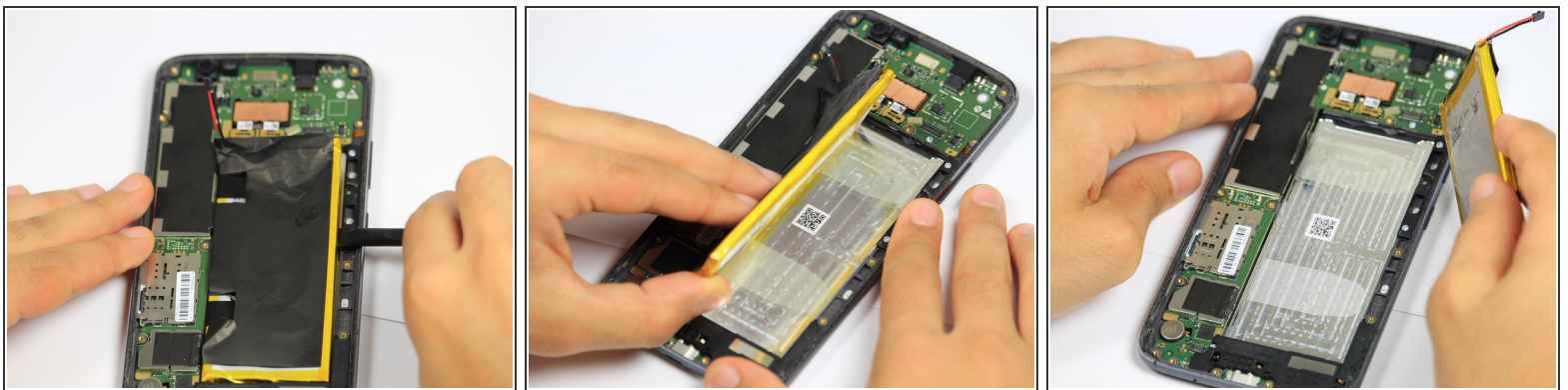
- Use the opening tool to disengage the black connector located above the battery.

Step 17



- ⚠ Heating up the battery excessively could cause the battery to ignite
- Use the heat gun along the back of the phone to loosen the adhesive that holds the battery in place.
- Spend equal intervals of time on each area applying heat.

Step 18



- Insert the spudger underneath the right side of the battery.
- Apply a moderate upward force along the length of battery, until the battery lifts out of place.
- Remove the battery with your hand.

To reassemble your device, follow these instructions in reverse order.