



Motorola Moto G6 Interior Plate Replacement

This guide shows how to remove the interior black plate within the Motorola Moto G6.

Written By: Thomas Chiavacci



INTRODUCTION

Note: This is an archived guide retained for historical purposes. For the updated guide, go [here](#).

The Motorola Moto G6 contains a black interior plate that protects the interior pieces of the device. To access the device's interior, this component must be removed. If the interior plate or an inside component of the device is damaged, an interior plate removal is required.

This guide teaches how to perform an interior plate replacement. No repair experience is required. However, this replacement will require tools to remove the needed components of the device. The specific device model in this guide is XT1925-12. Other model numbers include: XT1925-4, XT1925-5, XT1925-6, and XT1925DL.

Before beginning the repair, make sure the device is turned off and disconnected from an external power source. Gather the suggested tools listed below and begin the replacement.



TOOLS:

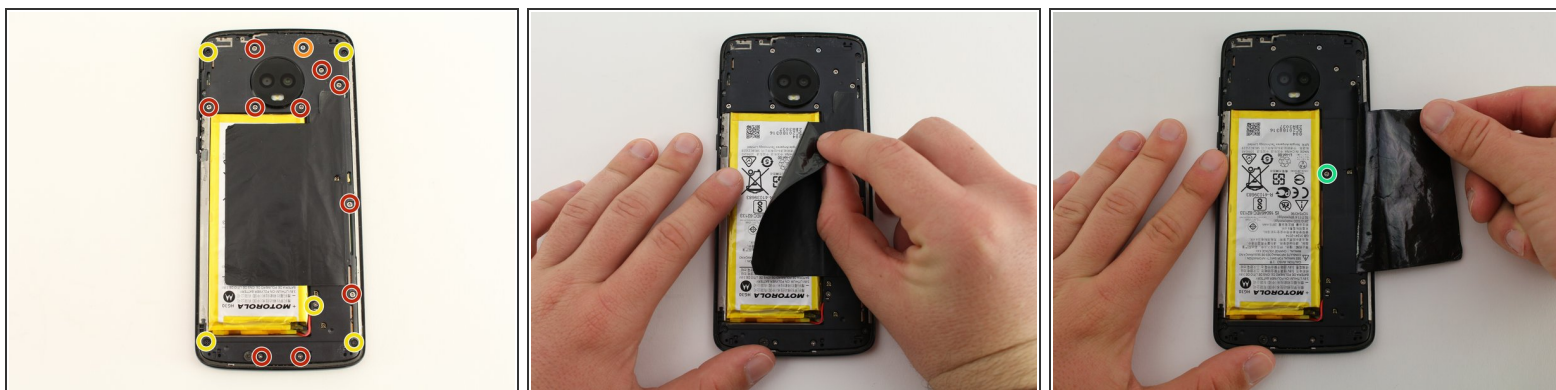
- [Suction Handle](#) (1)
- [iOpener](#) (1)
- [Heat Gun](#) (1)
- [iFixit Opening Tools](#) (1)
- [iFixit Opening Picks set of 6](#) (1)
- [Phillips #000 Screwdriver](#) (1)



PARTS:

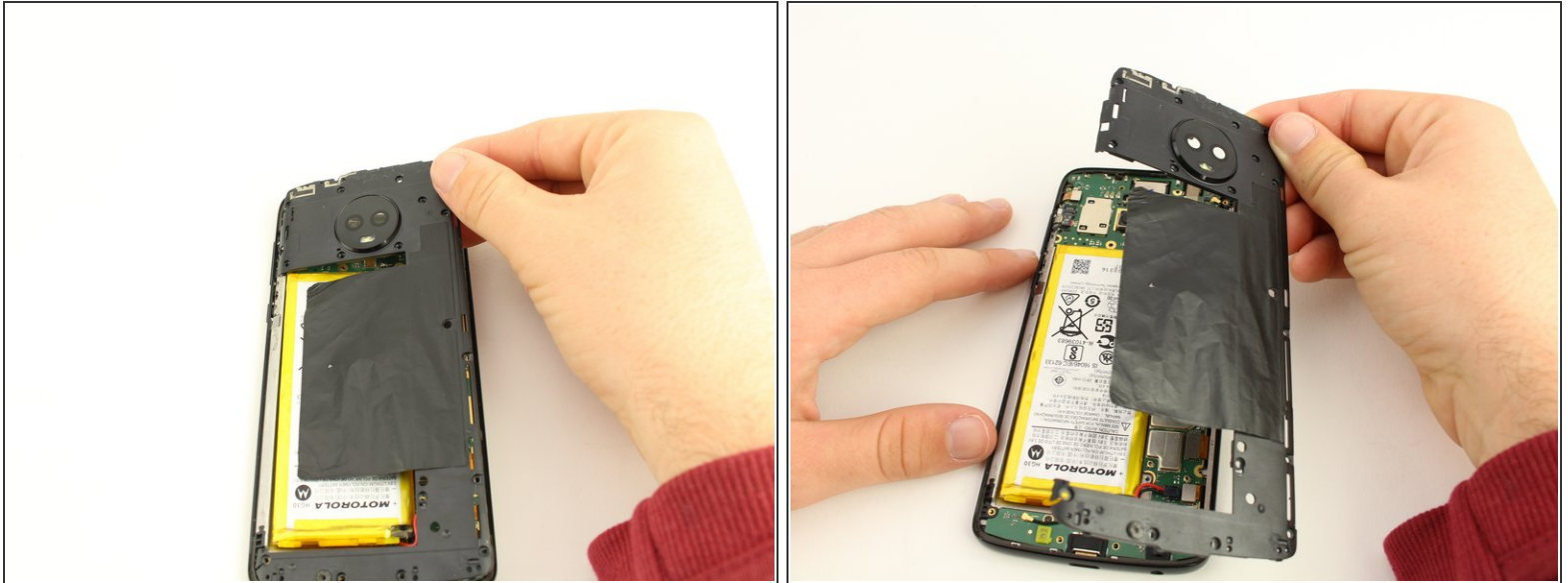
- [Precut Adhesive Card](#) (1)

Step 1 — Interior Plate



- Using a Phillips #000 screwdriver, remove the following screws:
- Remove ten 3.2mm screws.
- Remove one 3.8mm screw.
- Remove five 2.7mm screws.
- Pull back (but do not remove) the black tape.
- Remove the final 3.2mm screw from under the black tape.

Step 2



- Using your hands, gently pop off the interior plate.

To reassemble your device, follow these instructions in reverse order.