



# Motorola Moto G6 LCD Assembly Replacement

Replace broken Moto G6 screen. How to move your phone to a new LCD Frame Assembly.

Written By: Reed Deemer



# INTRODUCTION

**Note:** This is an archived guide retained for historical purposes. For the updated guide, go [here](#).



## TOOLS:

- [Heat Gun](#) (1)
- [iFixit Opening Picks set of 6](#) (1)
- [Tweezers](#) (1)
- [iSesamo Opening Tool](#) (1)
- [Razor Blade](#) (1)



## PARTS:

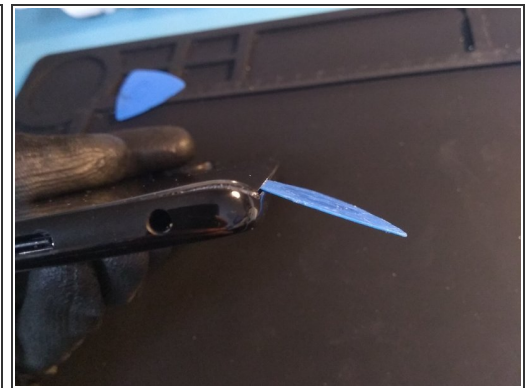
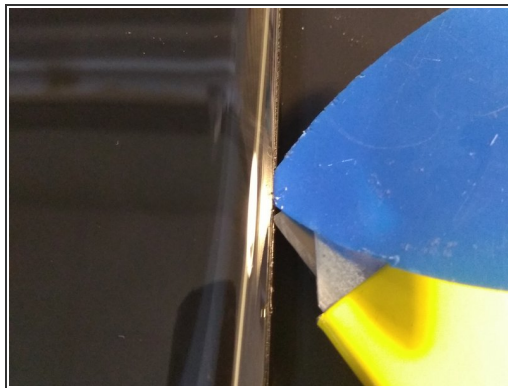
- [Moto G6 Screen](#) (1)
- [Moto G6 Display Adhesive](#) (1)

## Step 1 — Remove Back Glass




- The glass backplate needs to be removed first.
- Heat along left edge of the backplate until the glass is almost too hot to touch.


## Step 2 — Remove Backplate



- Carefully insert razor blade in between glass back plate and frame of phone.

 Do not insert blade any farther than a few millimeters! Be careful not to scratch frame or glass with the blade.

- With glass lifted slightly, you can now insert a regular opening pick and remove the razor blade.

 Note that the glass is curved and you will need to insert the pick at an angle when you push it in further.



### Step 3 — Remove Backplate



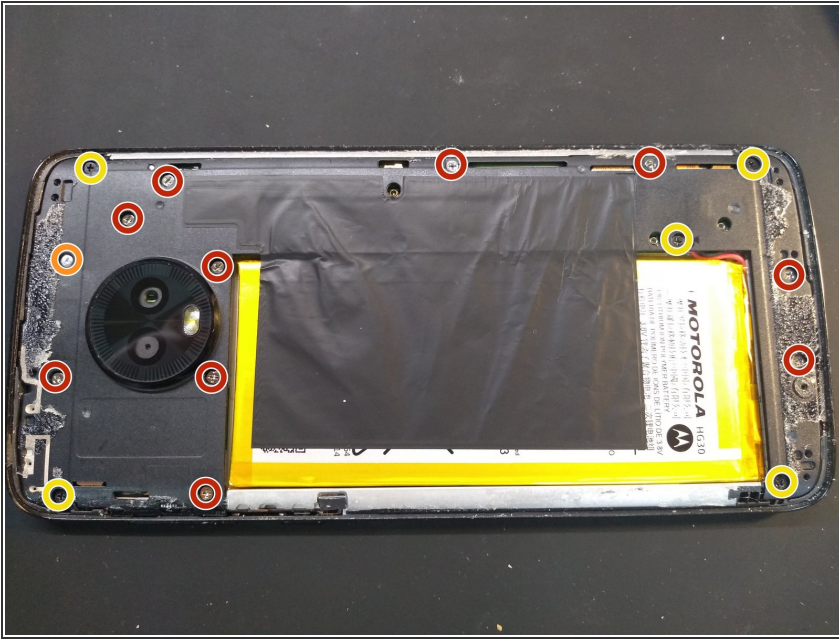
- Work pick in further to slowly lift the glass away from the frame.
  - Slide pick to bottom of phone and insert a new pick on the left side
  - Slide pick along left edge towards the top of the phone.
- i** If there is too much resistance from the adhesive, reheat the glass before continuing.

### Step 4 — Removing Backplate



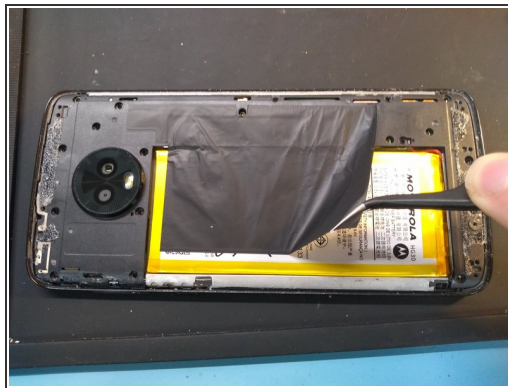
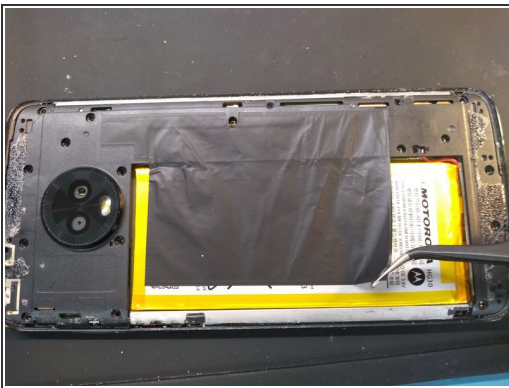
- Continue around right side of the backplate using the same procedure as Step 3 until the adhesive has been cut around the entire glass backplate.
- Carefully remove backplate. It should come off fairly easily. If there is any resistance, heat that area and cut the adhesive again with opening pick.

## Step 5 — Remove frame



- Remove ten 3.2mm silver Phillips #000 screws
- Remove one 3.8mm silver Phillips #000 screw
- Remove five 2.7mm black Phillips #000 screws

## Step 6



- Carefully peel up black tape from battery to reveal one last screw.
- ⓘ Do not completely remove black tape. You only need to pull back so that the tape is not attached to the battery or covering the screw.

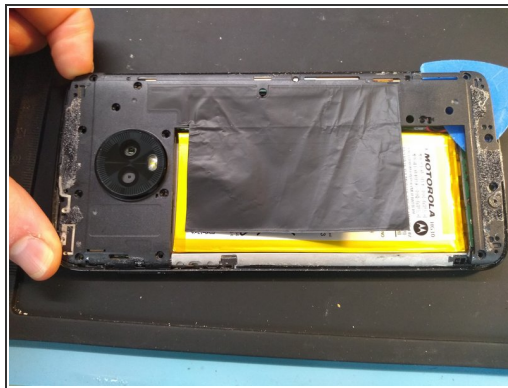


## Step 7



- Remove final 3.2mm silver Phillips #000 screw.

## Step 8



- Remove plastic plate covering the motherboard. You may need to start it using fingernails or a spudger.

**i** It is all one piece, be careful not to bend or crack it.

## Step 9 — Disconnect the Battery



- Using a plastic nylon spudger, carefully pry up on the battery connector to disconnect the battery.

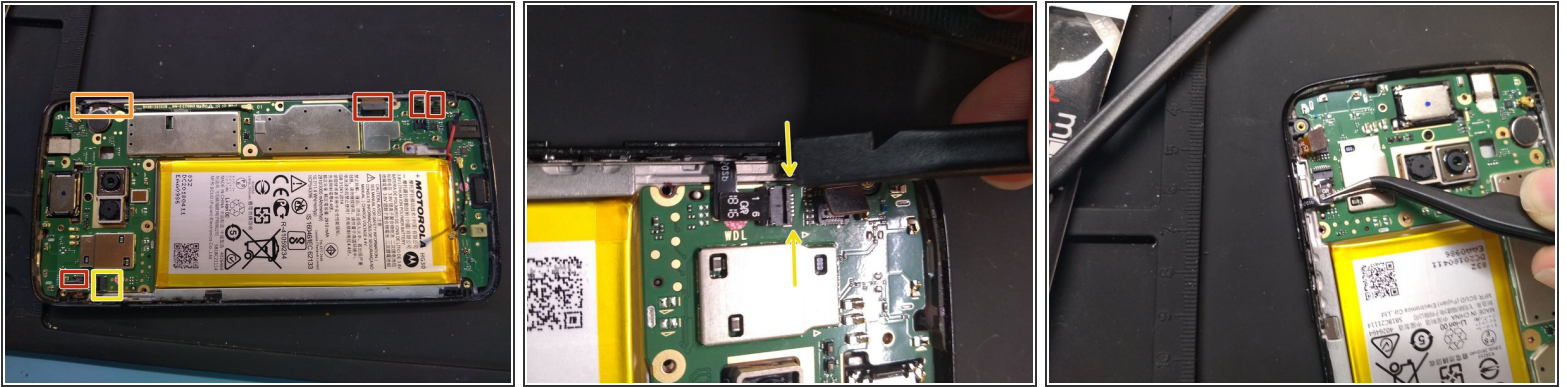
## Step 10



- remove two 2.8mm black phillips000 screws.



## Step 11



- Using a plastic spudger or prying tool, carefully lift the snap connectors attached to the Motherboard.
- Lift the black antenna cable out from next to the vibrator motor so that it is loose from the frame.
- Using a spudger, carefully lift the black lever of the zif connector (indicated by the arrow), then using tweezers, carefully pull the flex cable out of the connector.

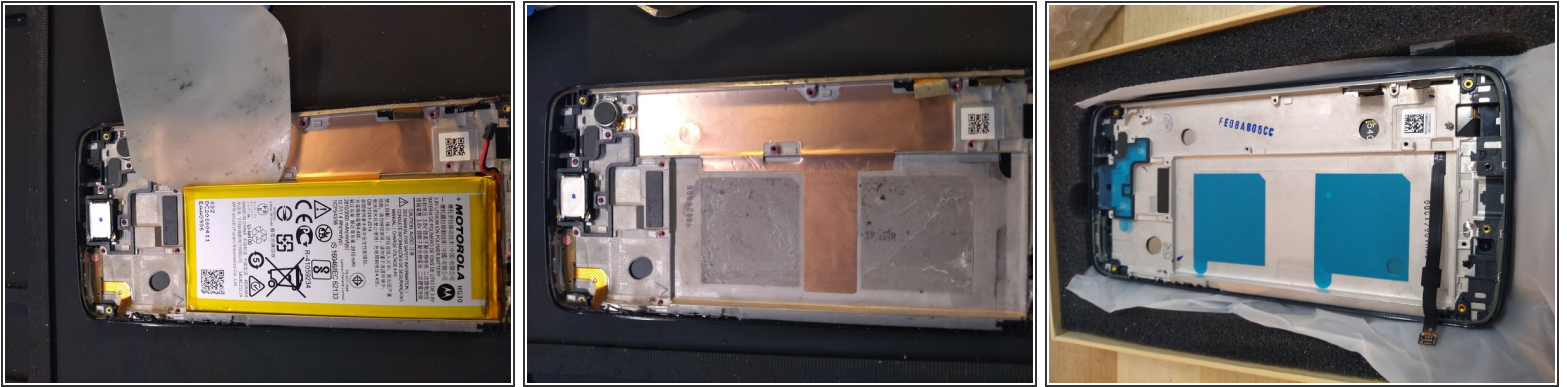
## Step 12 — Remove the Motherboard



- Don't forget to eject the sim card tray like I almost did.
- Carefully lift the motherboard out of the frame.
- Once the upper part is free, pull the motherboard upwards and out, so that the charging port does not get stuck on the frame.



## Step 13 — Option 1



- From this point, you can remove the battery and move what is needed to a new screen and frame assembly.

## Step 14 — Option 2



- Or you can keep the battery in and only remove the LCD and digitizer from the frame.
- This may be easier and cheaper than trying to swap the battery, but you will have to clean off the old adhesive and apply your own adhesive to hold down the new screen.

⚠ Be careful of the home button cable if removing the LCD and Digitizer

To reassemble your device, follow these instructions in reverse order. Don't forget to clean old adhesive, and replace with new adhesive. Be sure to place screws in correct holes.