



Motorola Moto G7 Play Battery Replacement

The following guide will demonstrate how to replace a faulty battery for the Motorola Moto G7 Play.

Written By: Monserath Casillas



INTRODUCTION

This guide will show each detailed step to removing and replacing the battery in the Motorola G7 Play, model number XT1952-3 or XT1952-2. The battery is what keeps the device powered when disconnected from a charger. If the device does not power on or does not hold a charge this can possibly mean that the battery is no longer working. Look out for a swollen or leaking battery. If there is a swollen or leaking battery, be cautious and follow iFixit's guide on what to do if a [battery is swollen](#).



TOOLS:

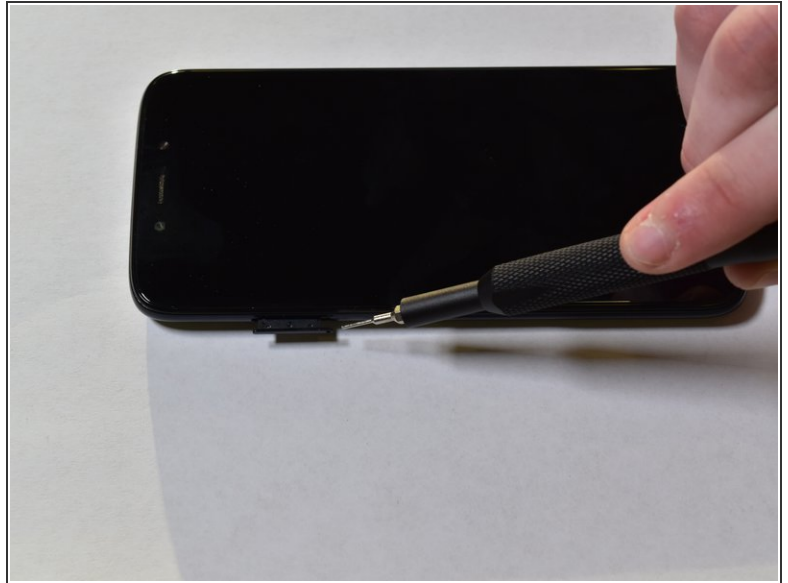
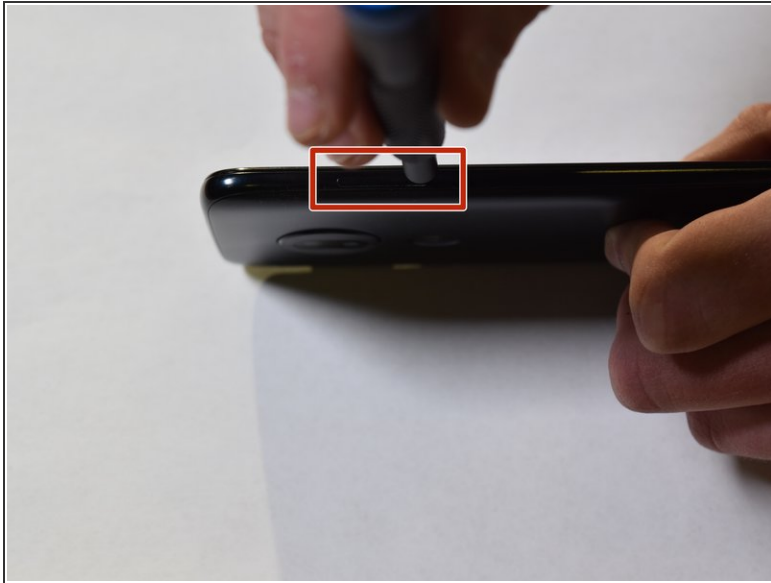
- [iFixit Opening Picks set of 6](#) (1)
- [iFixit Opening Tools](#) (1)
- [Phillips #00 Screwdriver](#) (1)
- [Metal Spudger](#) (1)
- [SIM Card Eject Tool](#) (1)
- [Nylon-Tip Reverse Tweezers](#) (1)




PARTS:

- [Moto G7 Play Replacement Battery](#) (1)

Step 1 — Battery



 Turn off device before you begin.

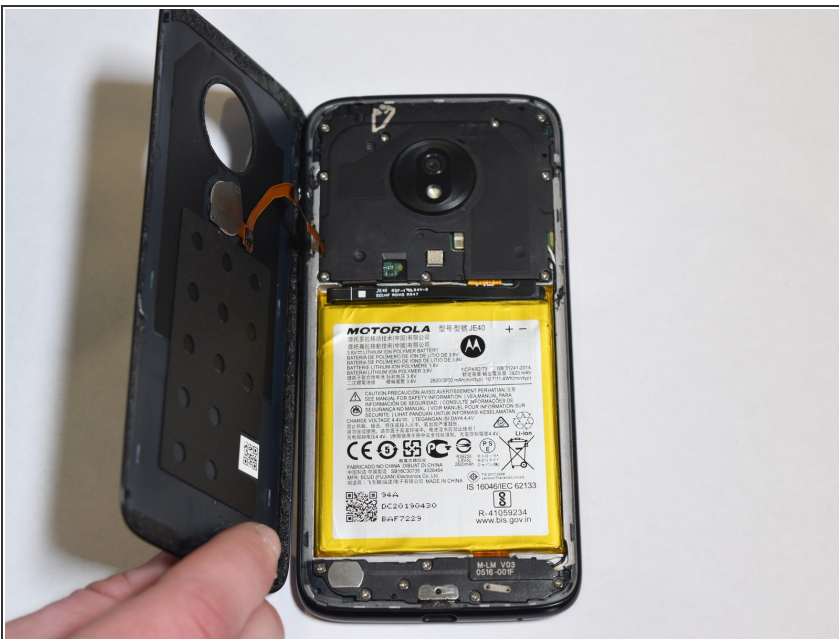
- Insert a paperclip or SIM card eject tool into the small hole in the SIM card tray on the right side of the top edge of the phone.
- Press the tool into the hole to eject the tray.
- Remove SIM Card Tray.

Step 2



- Use the iFixit pick to break the adhesive around the back case.
- ❗ Use a heat gun, hairdryer, or iOpener to weaken the adhesive around the back case.

Step 3



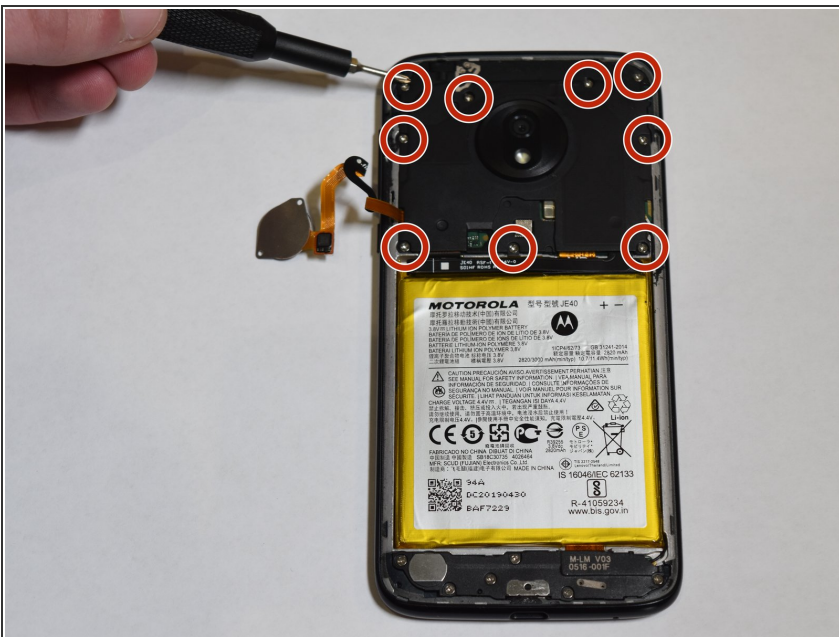
- Detach the back case from the phone.
- ❗ Make sure the back is opened right to left so the cable of the fingerprint scanner does not get damaged.

Step 4



- Use the iFixit pick and the iFixit opening tool to pull the fingerprint scanner off of the back case.

Step 5



- Next, remove the nine 3.2mm Phillips #00 screws from the motherboard cover with a 00 Phillips bit.

Step 6



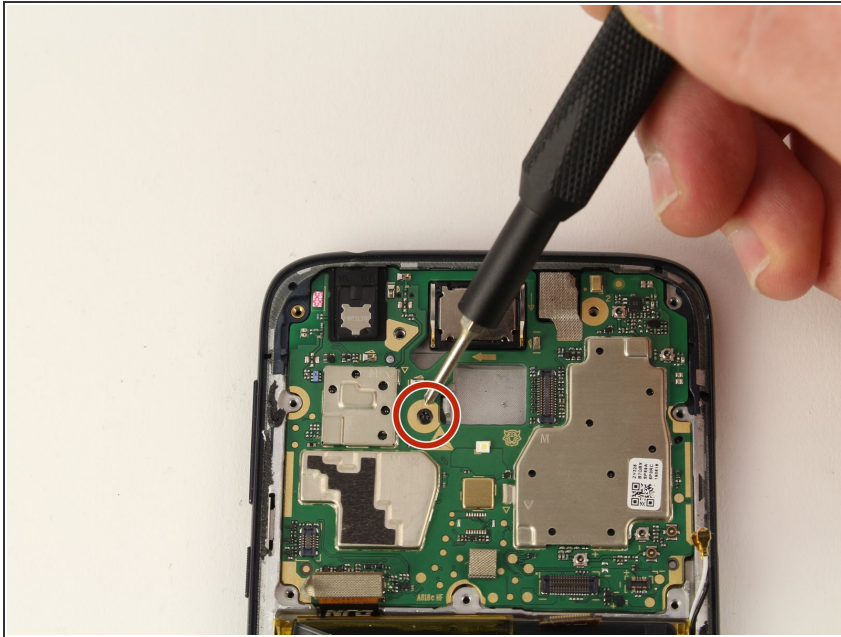
- Lift the motherboard cover from the bottom.
- ① Use reverse tweezers or a similar tool if needed.

Step 7



- Using an iFixit opener tool, detach the fingerprint sensor and the other 5 cables from the motherboard.

Step 8



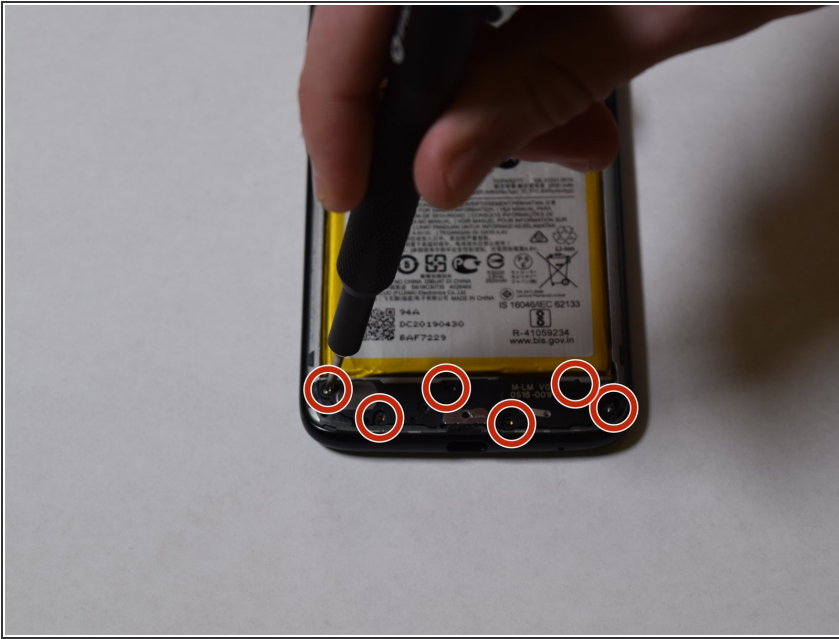
- Remove the 0.4mm Phillips #00 screw from the motherboard with a 00 Phillips bit.

Step 9



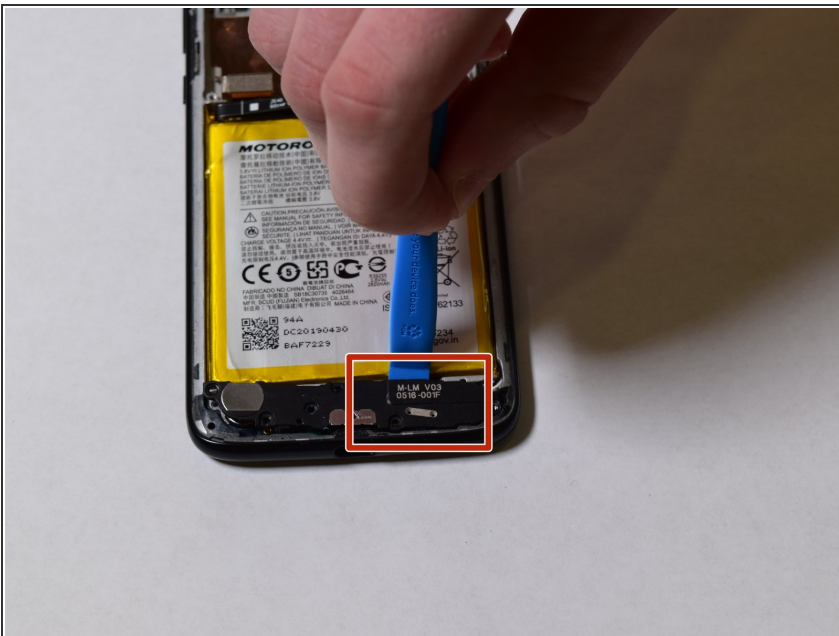
- Carefully pry up the motherboard from the bottom with an iFixit opener tool.

Step 10



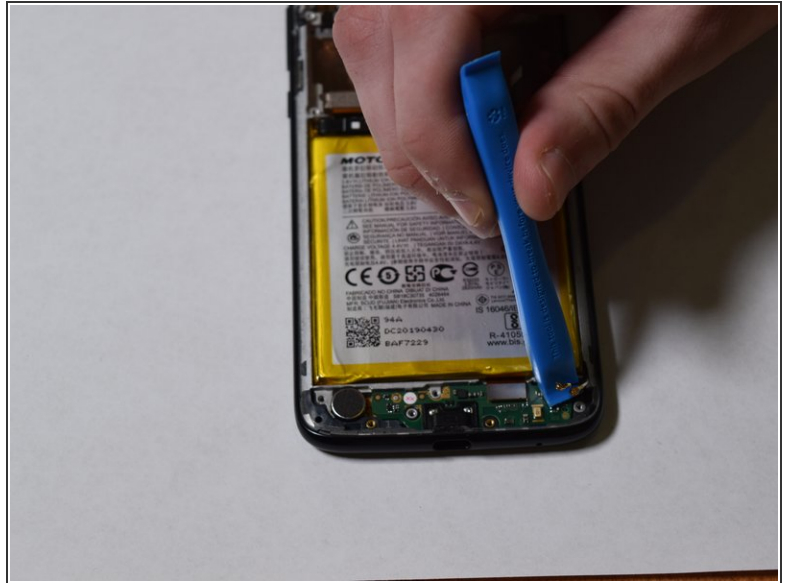
- Remove the six 3.2 mm screws from the charging port assembly cover with a Phillips #00 screwdriver.
- Remove the cover.

Step 11



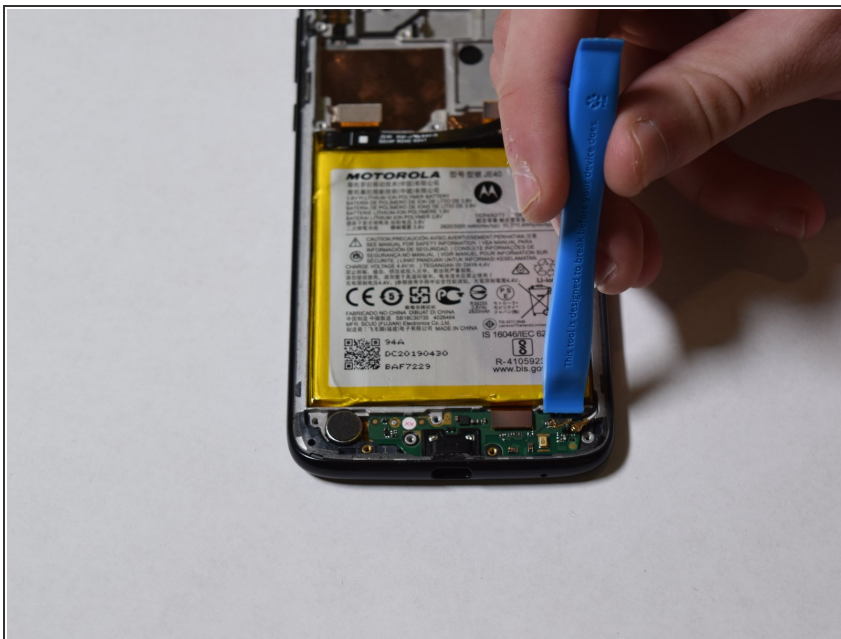
- Using the iFixit opening tool, carefully pry up the charging port assembly cover.

Step 12



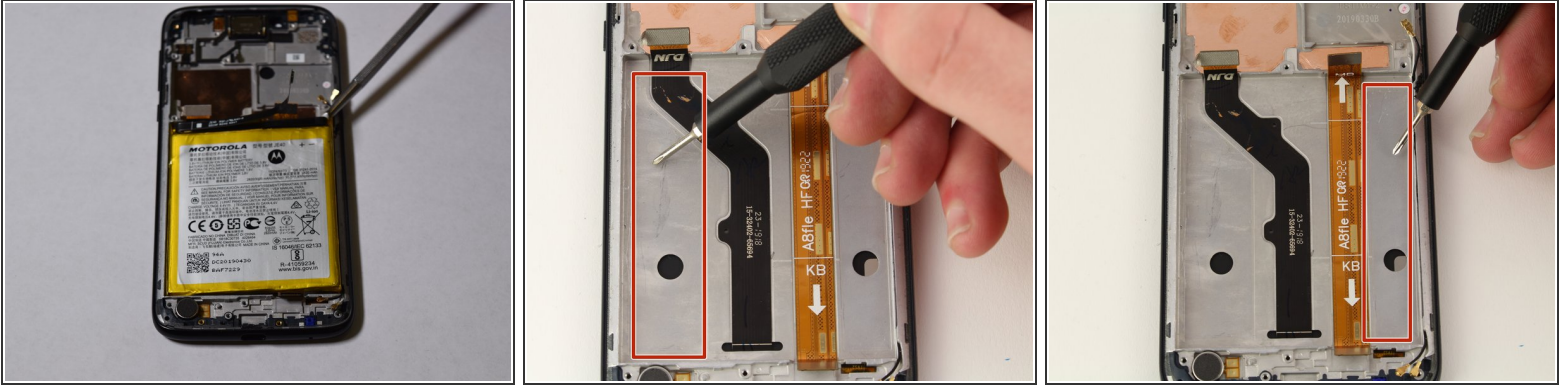
- Using an iFixit opening tool, detach the cables from the charging port assembly.

Step 13



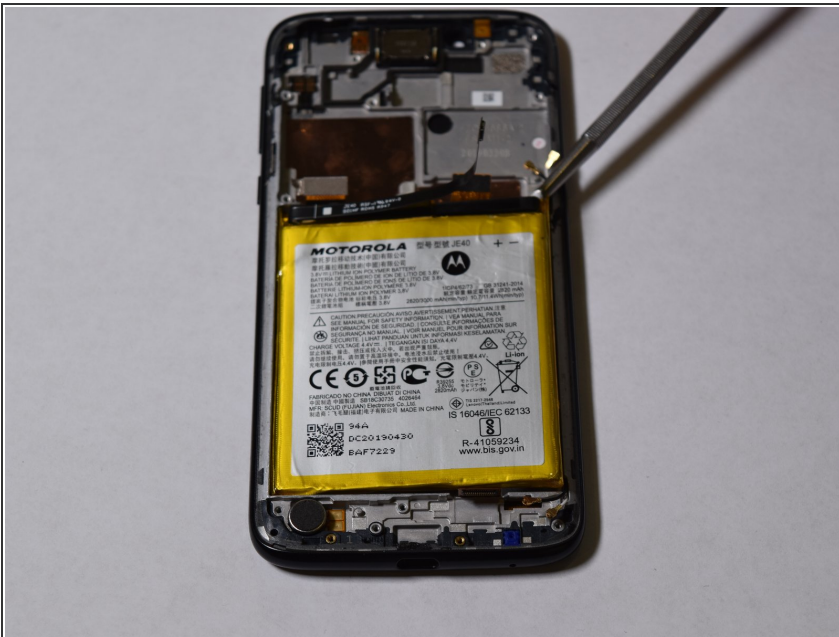
- Using the iFixit opening tool, carefully pry up the charging port assembly.

Step 14



- Using a spudger, break both adhesive strips on the back side of the battery.
- ⚠ Using a metal spudger may puncture or damage other components in your device.

Step 15



- Pry the battery up now that the adhesive has been separated from the battery.

To reassemble your device, follow these instructions in reverse order.