



Motorola Moto Q Camera Replacement

Written By: Dave Uth



INTRODUCTION

This repair guide shows you how to remove the camera so it can be fixed or replaced.



TOOLS:

- [iFixit Opening Tools](#) (1)
 - [Spudger](#) (1)
-

Step 1 — Back Casing



- Use the Push Pin to remove the rubber screw covers by pushing the needle into the rubber and pulling up.

⚠ Be careful not to poke yourself when handling the push pin because it is very sharp.

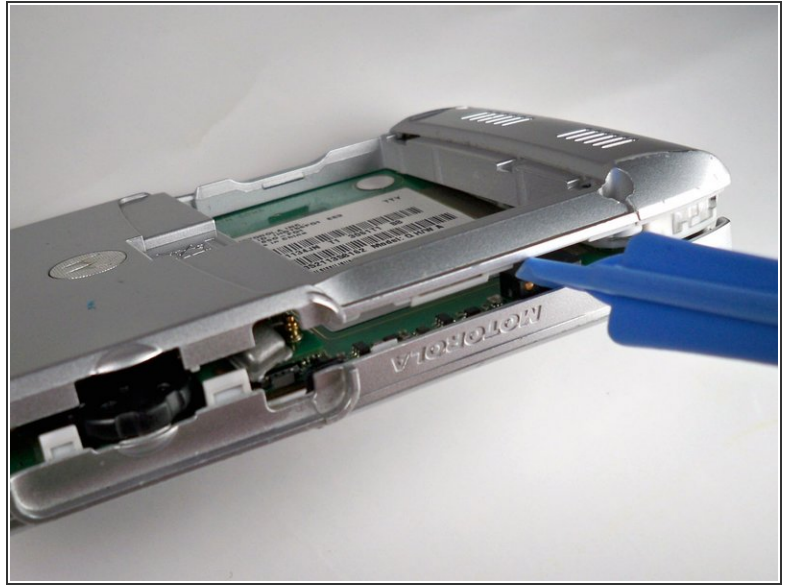
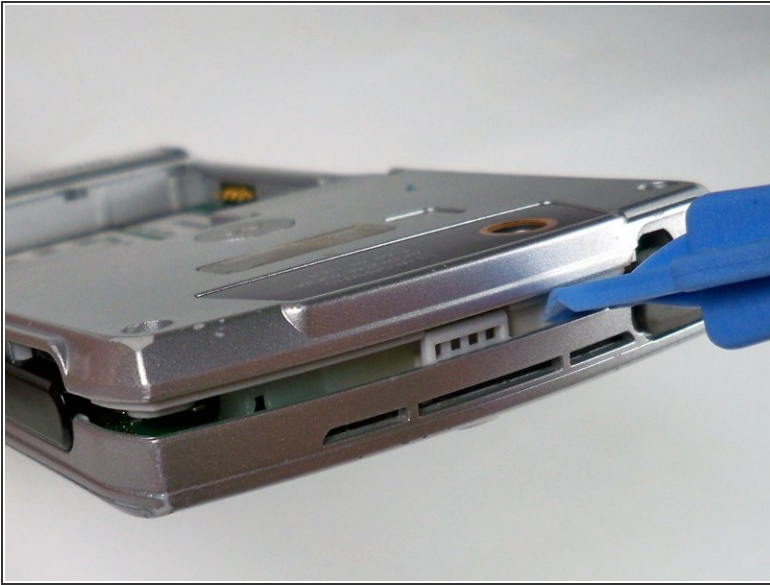
Step 2




- Use the T6 screwdriver to remove the four screws holding the casing together.

ⓘ Note: they are in the same place where you removed the four rubber coverings

Step 3

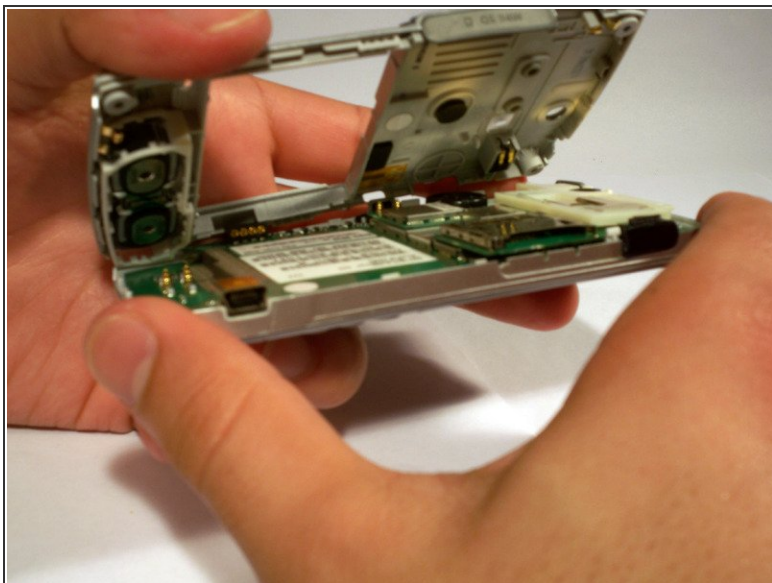


 Wedge the plastic opening tool in between the top and bottom cases. This may require a little or a lot of force so be careful.

 Note: the phone should be face up and the plastic opening tool should be face downwards

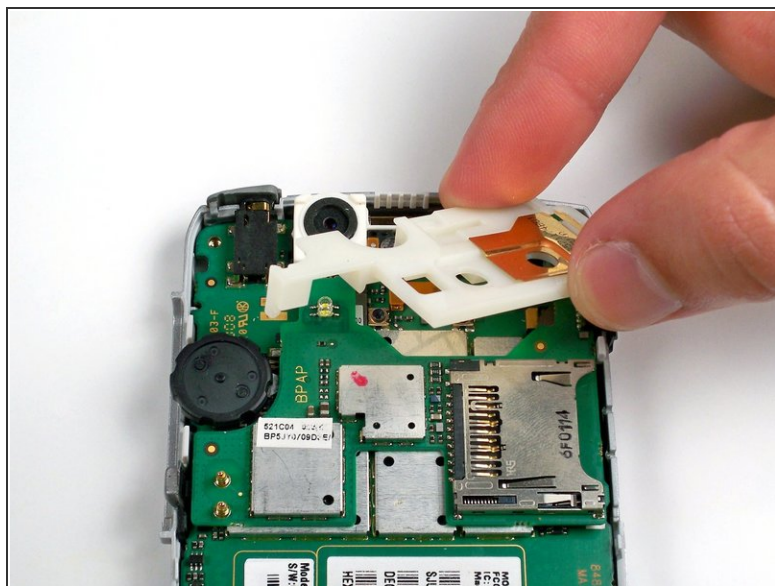
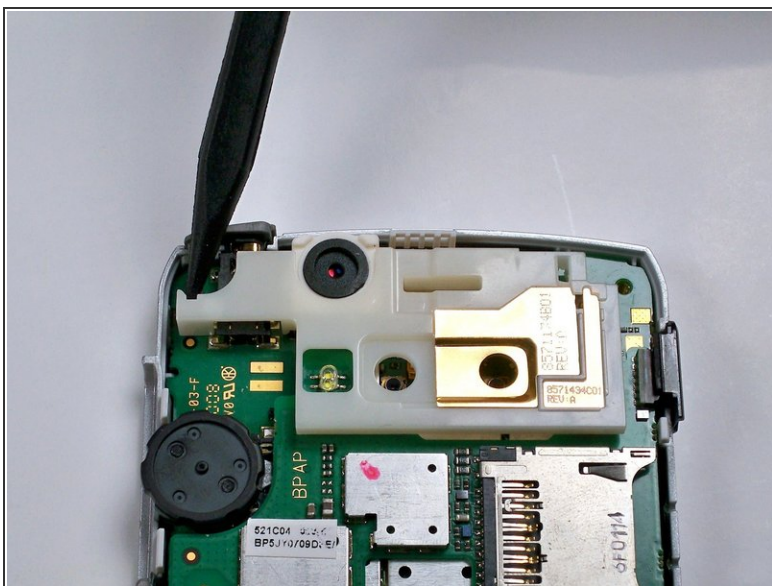
- Once you get the plastic opening tool in, slide it across the side of the phone, making sure to keep the plastic opening tool wedged in between the two casings.
- Repeat the 3 steps above for the top, bottom, and opposite side.

Step 4



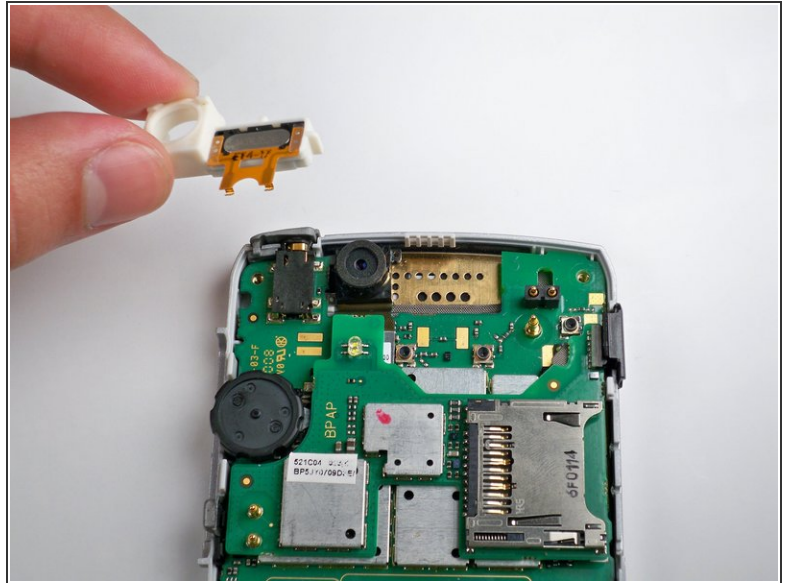
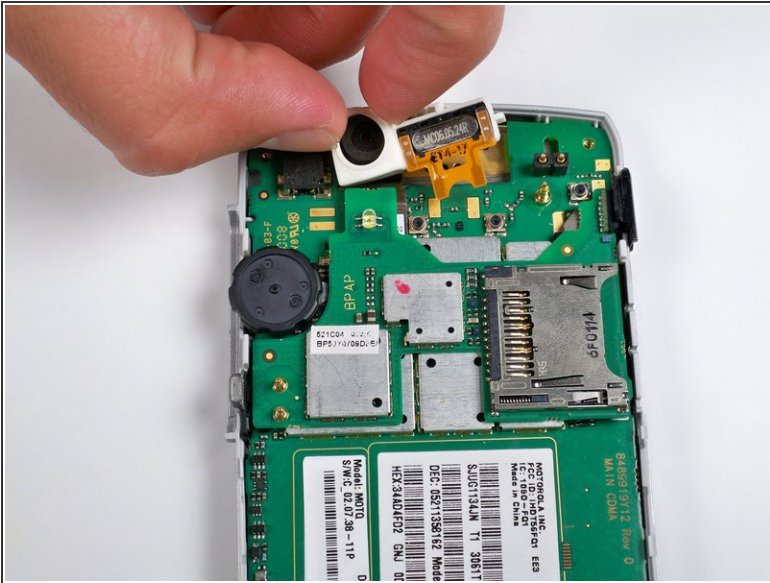
- Gently lift and remove the back casing.

Step 5 — Camera



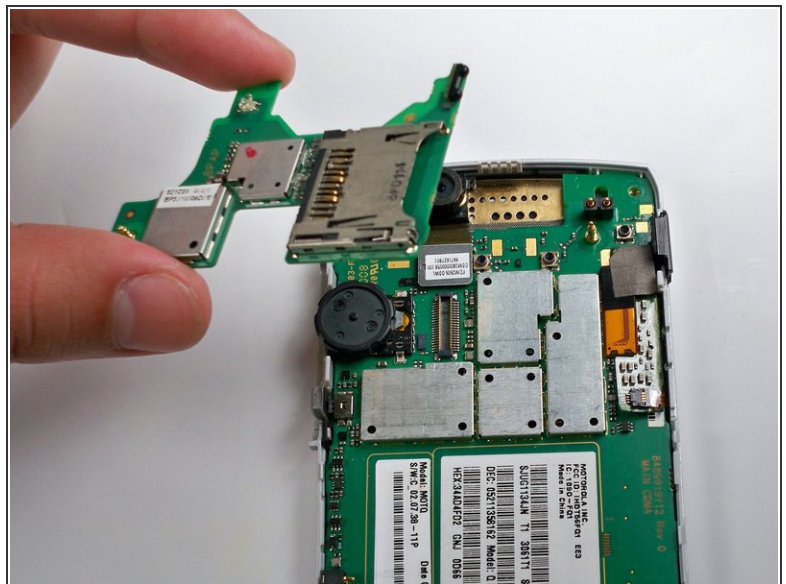
- Remove the plastic inner cover by placing the spudger under the left-most side and pry to the left and upwards.
- Gently rotate/wiggle the cover until you can pull it off the phone.

Step 6



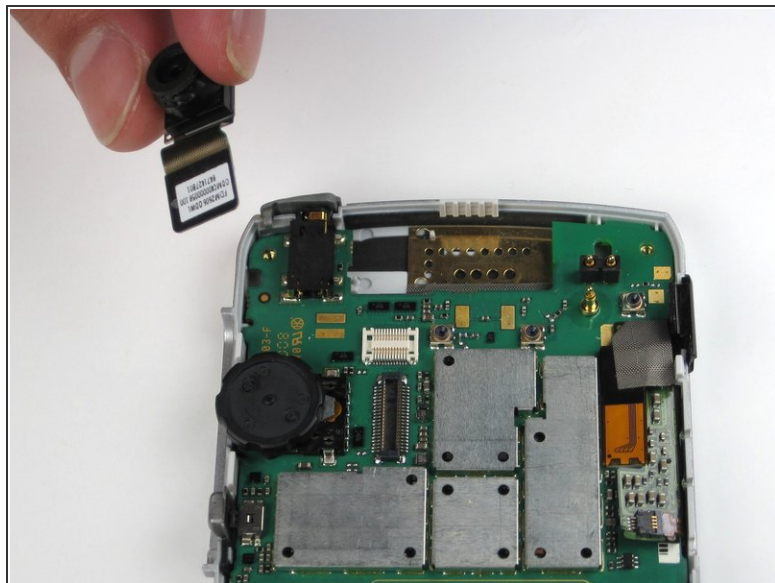
- Using your fingers, remove the plastic piece that holds the camera in place.

Step 7



- Carefully pry up the upper circuit board with the spudger.
- The second picture shows what your phone should look like when the upper circuit board is removed.

Step 8



- Take out the camera and attached chip with the iPod removal tool. Carefully pry the chip off its connection and the camera will come out too.

To reassemble your device, follow these instructions in reverse order.