



Motorola Moto Q LCD Display Replacment

Written By: Luis Herrera



INTRODUCTION

Use this guide to replace the LCD Display on your Motorola Moto Q.



TOOLS:

- [Spudger](#) (1)



PARTS:

- [Motorola Moto Q LCD Display](#) (1)

Step 1 — Back Casing



- Use the Push Pin to remove the rubber screw covers by pushing the needle into the rubber and pulling up.

⚠ Be careful not to poke yourself when handling the push pin because it is very sharp.

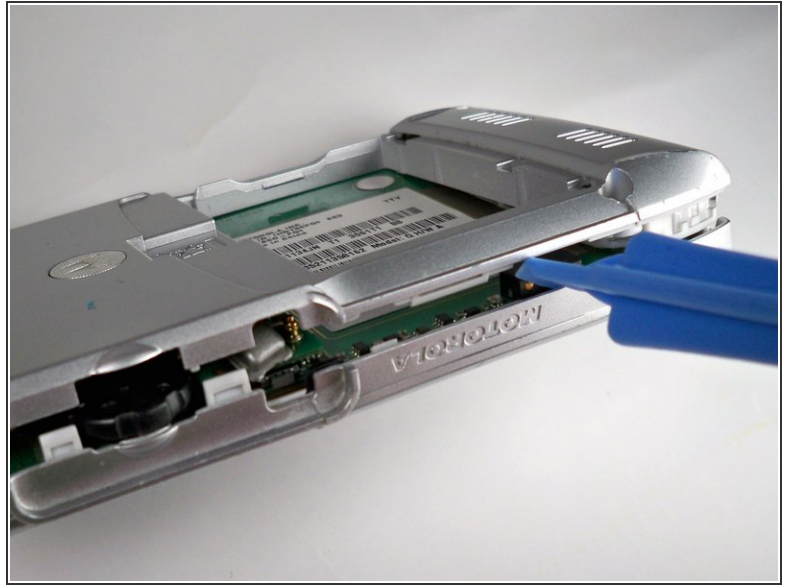
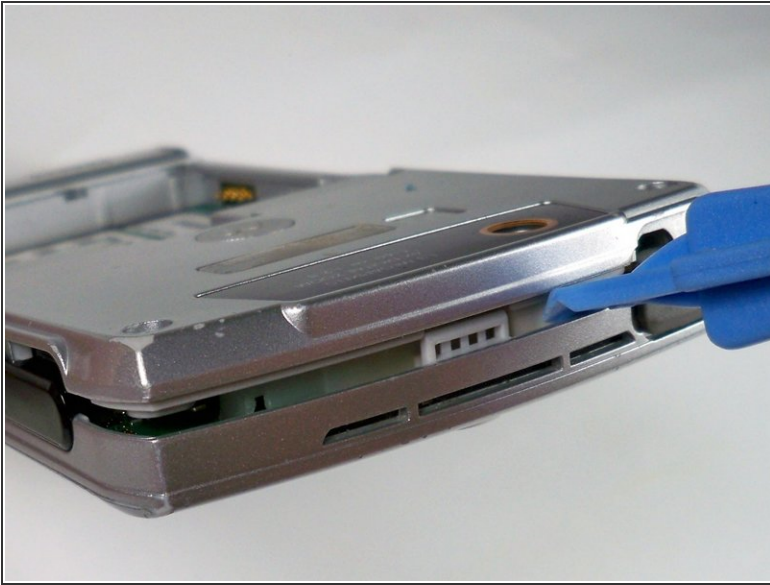
Step 2





- Use the T6 screwdriver to remove the four screws holding the casing together.

ⓘ Note: they are in the same place where you removed the four rubber coverings

Step 3

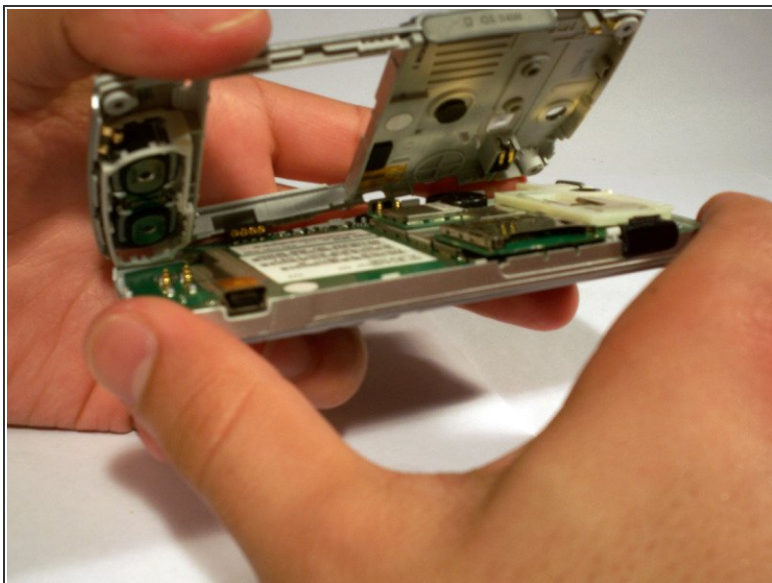


 Wedge the plastic opening tool in between the top and bottom cases. This may require a little or a lot of force so be careful.

 Note: the phone should be face up and the plastic opening tool should be face downwards

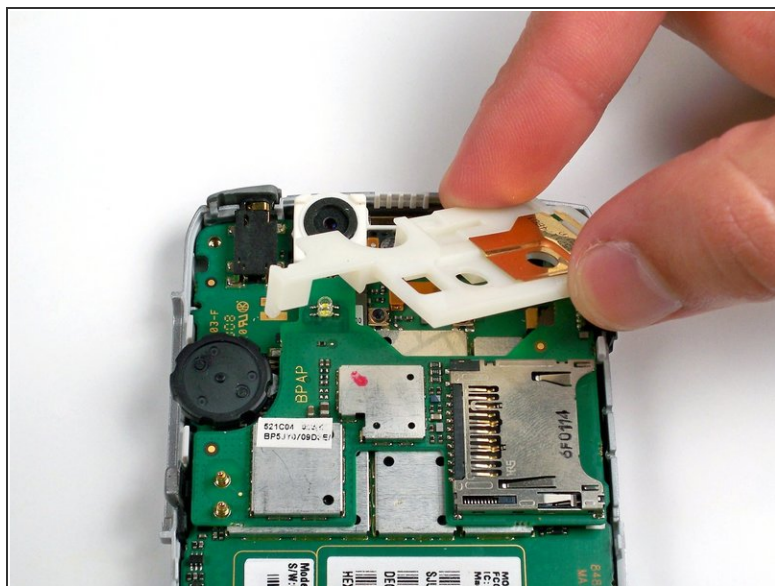
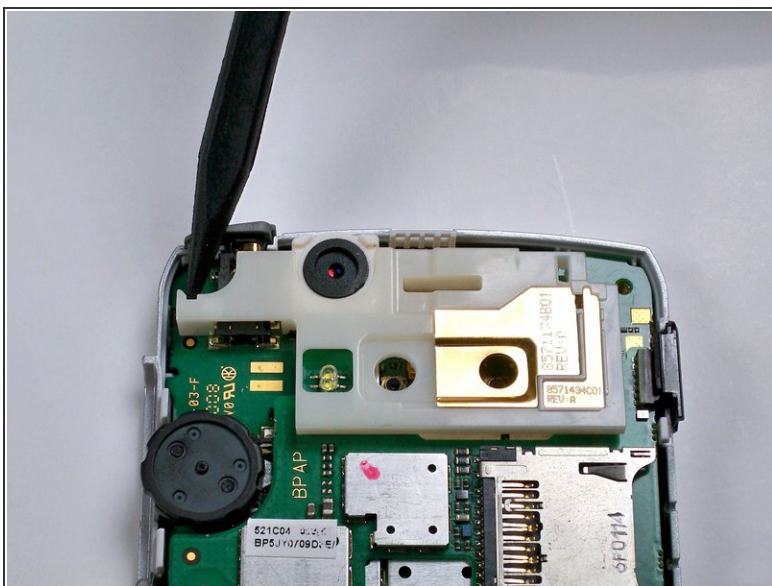
- Once you get the plastic opening tool in, slide it across the side of the phone, making sure to keep the plastic opening tool wedged in between the two casings.
- Repeat the 3 steps above for the top, bottom, and opposite side.

Step 4



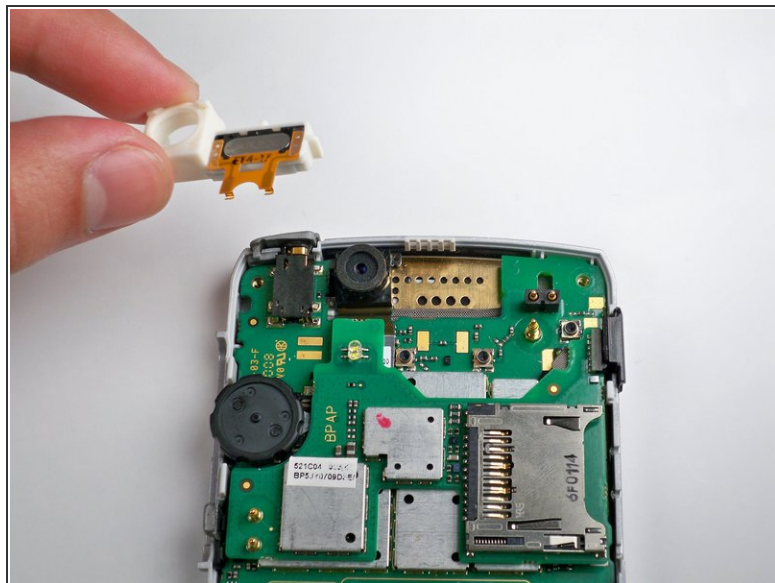
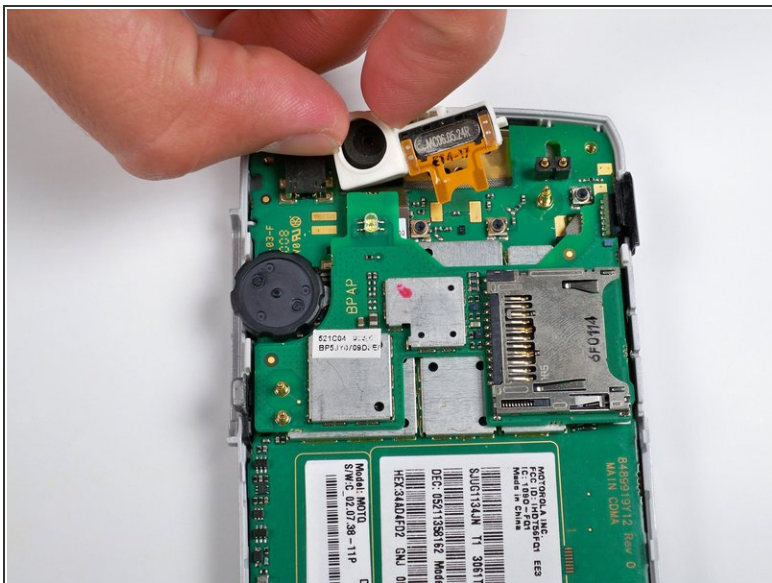
- Gently lift and remove the back casing.

Step 5 — Camera



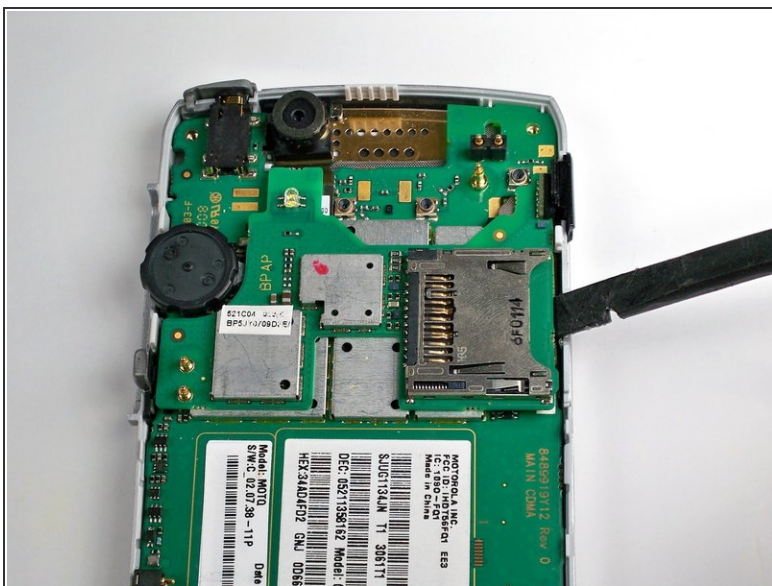
- Remove the plastic inner cover by placing the spudger under the left-most side and pry to the left and upwards.
- Gently rotate/wiggle the cover until you can pull it off the phone.

Step 6



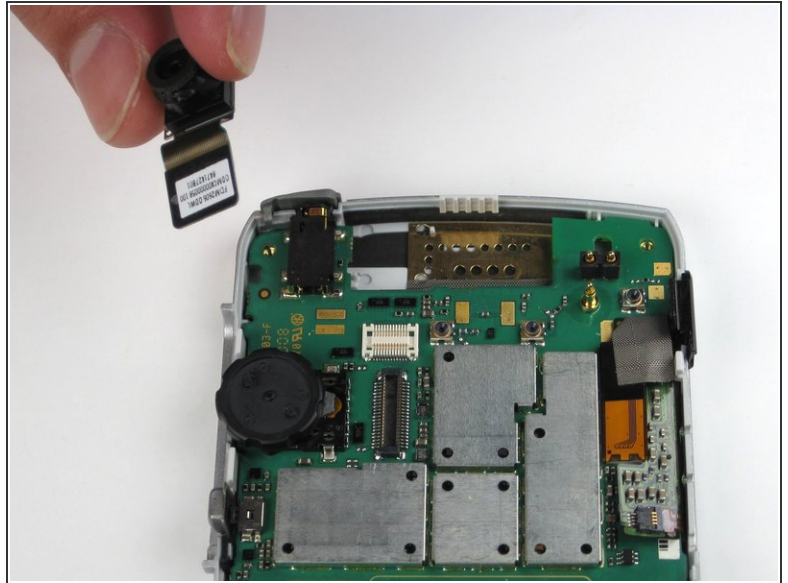
- Using your fingers, remove the plastic piece that holds the camera in place.

Step 7



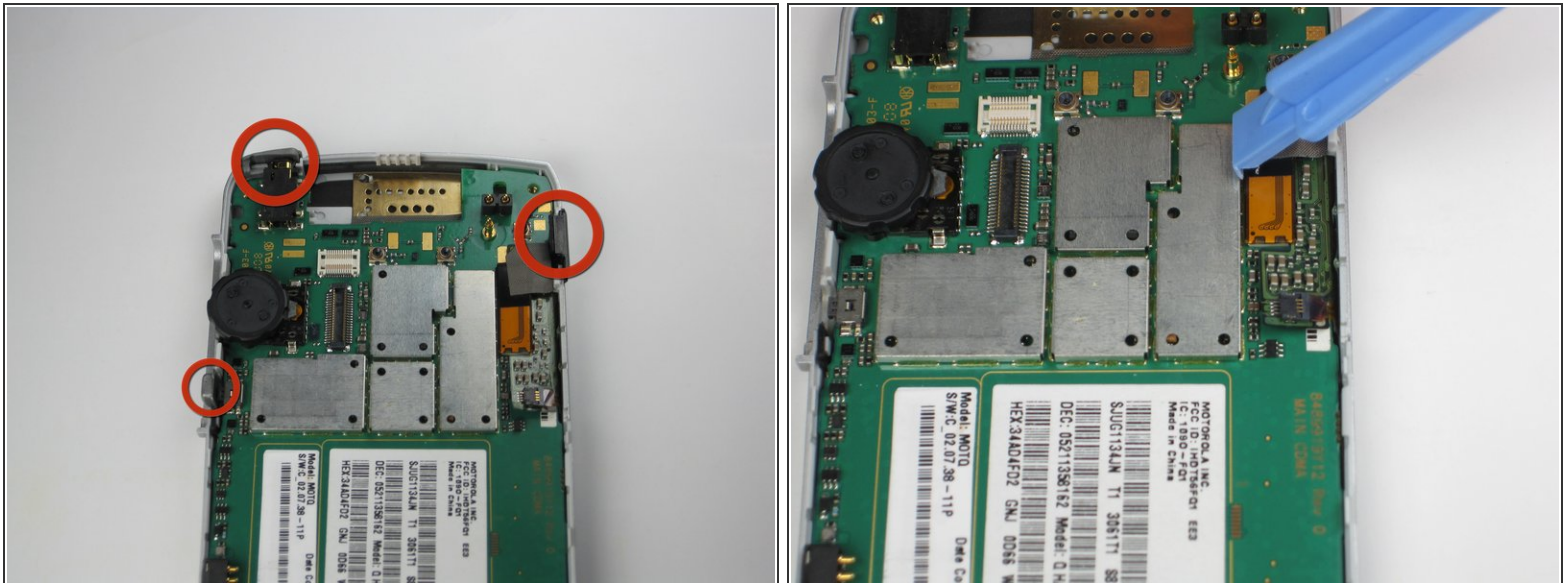
- Carefully pry up the upper circuit board with the spudger.
- The second picture shows what your phone should look like when the upper circuit board is removed.

Step 8



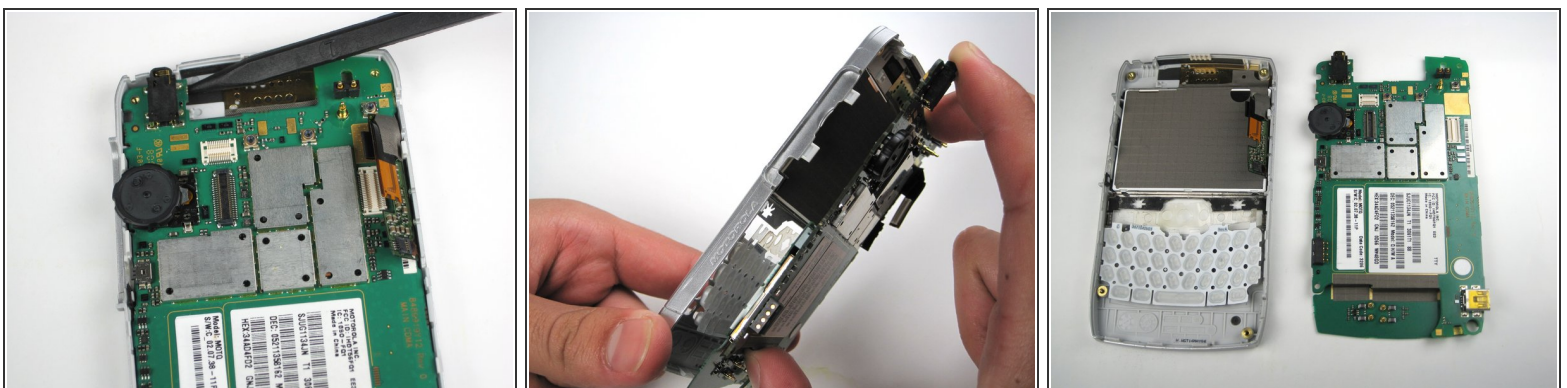
- Take out the camera and attached chip with the iPod removal tool. Carefully pry the chip off its connection and the camera will come out too.

Step 9 — LCD Display



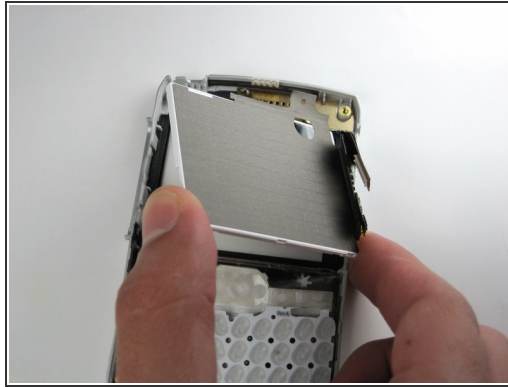
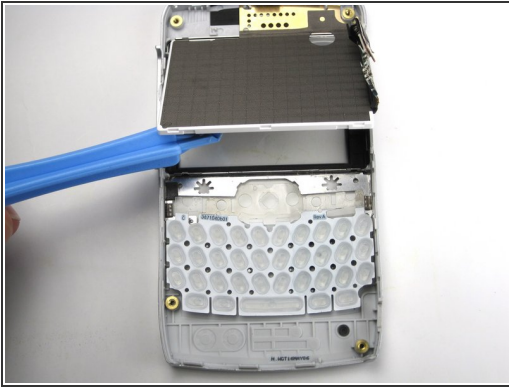
- Remove the infra red plastic covering, the button on the left side of the phone, and the earphone cover lid by pulling straight up on them with your fingers.
- Wedge the plastic opening tool in between the logic board and the small orange band and gently pry upwards.
- ⓘ Note: the orange band is connected to the logic board by a small connector.

Step 10



- Wedge the spudger in between the logic board and the front casing and gently lift while pulling away from the orange ribbon.
- ⓘ Note: it is easier to remove the logic board by prying upwards near the top of left corner phone.

Step 11



- Wedge the plastic opening tool between the LCD screen and the metal casing holding it in and lift gently.
- ⓘ Note: the LCD screen is also held in place by a silver tape. Simply pull the screen from one side to other to remove the screen completely.

To reassemble your device, follow these instructions in reverse order.