



# Motorola Moto X Battery Replacement

Prerequisite only guide. Replace the battery in a Motorola Moto X.

Written By: Sam Goldheart



# INTRODUCTION

This is a prerequisite only guide.

Suffering from a rapidly waning, or non-existent, battery life? Use this guide to replace the battery in your Motorola Moto X.



## TOOLS:

- [SIM Card Eject Tool](#) (1)
- [iOpener](#) (1)
- [iFixit Opening Tools](#) (1)
- [Spudger](#) (1)
- [T3 Torx Screwdriver](#) (1)



## PARTS:

- [Motorola Moto X Replacement Battery](#) (1)

## Step 1 — Battery



- Insert the tip of a spudger under the battery cable near the connector to lift it straight up from its socket.
- Use the flat end of a spudger to disconnect the NFC antenna cable connector.

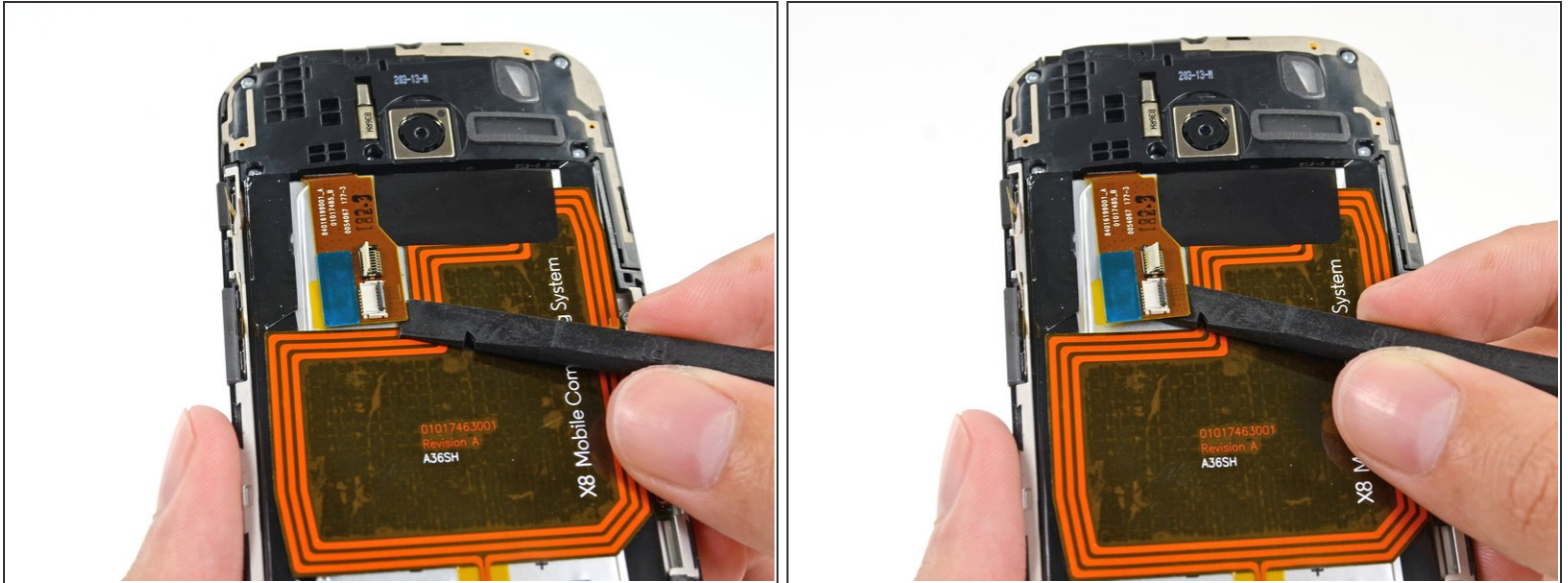
## Step 2



- Use the tip of a spudger to flip up the ZIF retaining flap from the button assembly cable connector.
- Slide the tip of the spudger under the button assembly cable near the connector to pull the cable straight out of its socket.

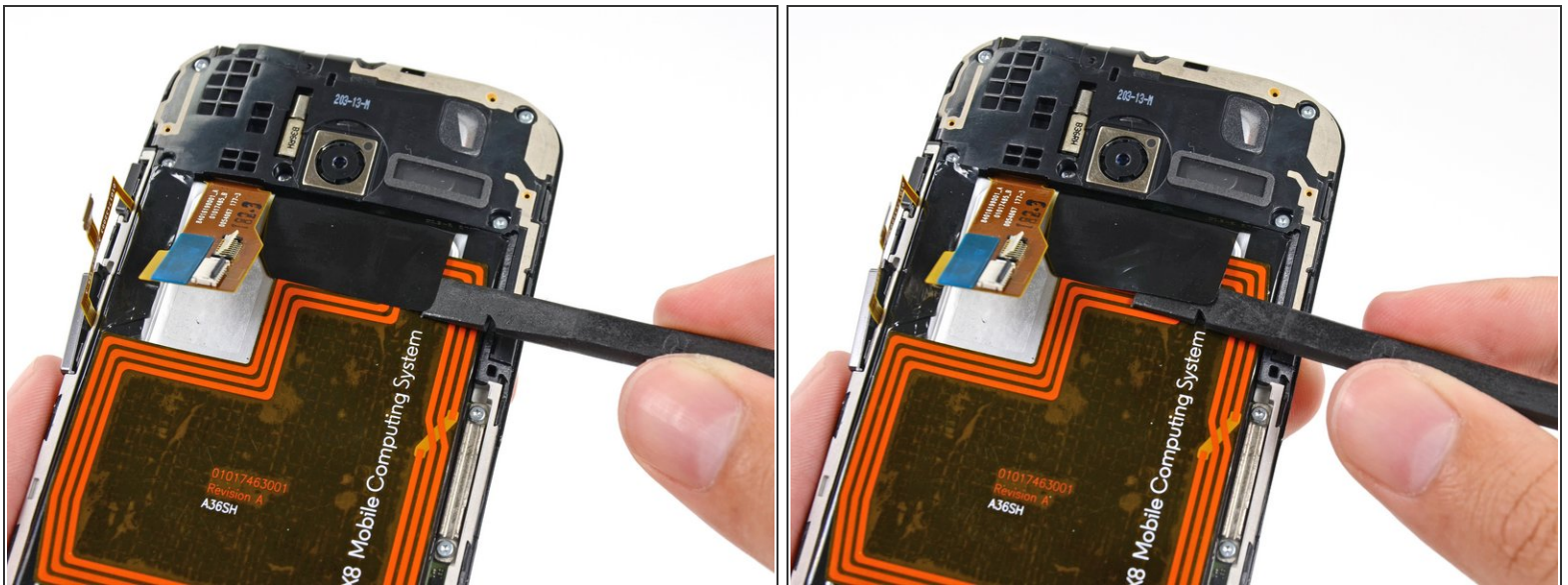


## Step 3



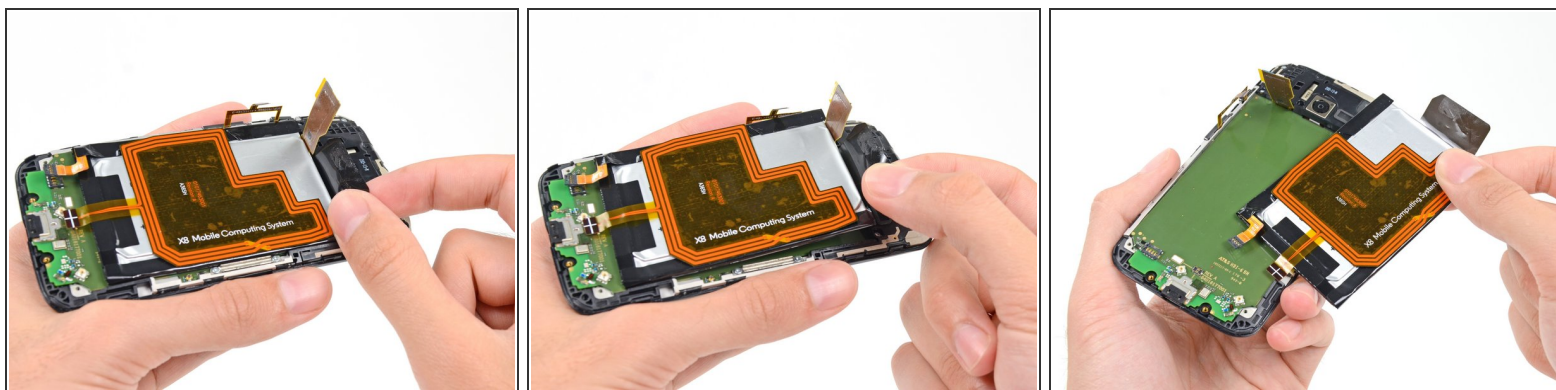
- Insert the flat end of a spudger under the interconnect cable to free it from the adhesive holding it to the battery.

## Step 4



- Use the flat end of a spudger to peel the adhesive pull-tab off the top of battery.

## Step 5



- Use the adhesive pull-tab to lift the battery from its recess.
- ⚠ The battery is secured to the motherboard with mild adhesive. Peel slowly, and be careful not to bend or puncture the battery.
- Remove the battery from the phone.
- 🔧 When reassembling your phone secure the battery with [double-sided tape](#) or [pre-cut adhesive strips](#).

Compare your new replacement part to the original part. You may need to transfer remaining components or remove adhesive backings from the new part before installing.

To reassemble your device, follow these instructions in reverse order.

Take your e-waste to an [R2 or e-Stewards certified recycler](#).

Repair didn't go as planned? Check out our [Motorola Moto X Answers community](#) for troubleshooting help.