



Motorola Moto X4 Display Assembly Replacement

Open up your Moto X4 and replace the screen.

Written By: Brian Buchanan



INTRODUCTION

The official guide has been updated and can be found [here](#). This guide has been archived for historical purposes.

Be sure to completely power down your Moto X4 before you use the iOpener to open the phone.



TOOLS:

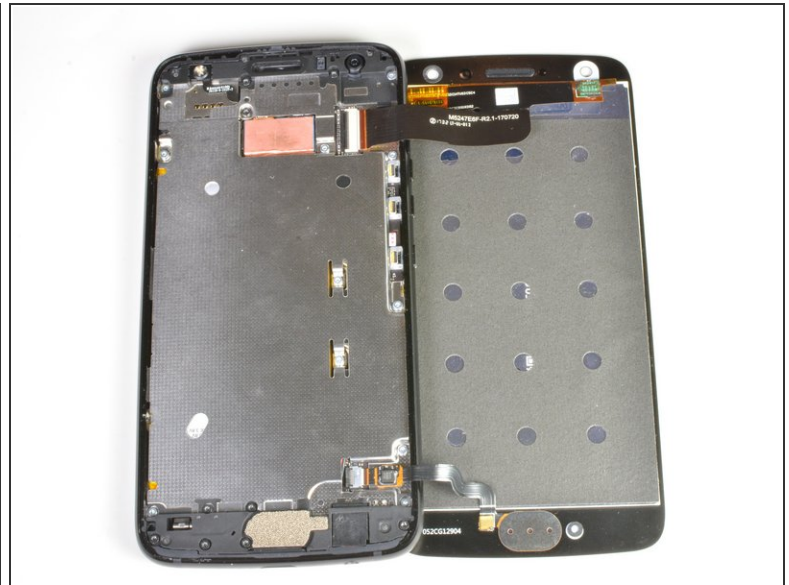
- [iOpener](#) (1)
- [Spudger](#) (1)
- [iFixit Opening Picks set of 6](#) (1)
- [Tesa 61395 Tape](#) (1)





PARTS:



- [Motorola Moto X4 Screen](#) (1)
- [Moto X4 Display Adhesive](#) (1)

Step 1 — Display Assembly

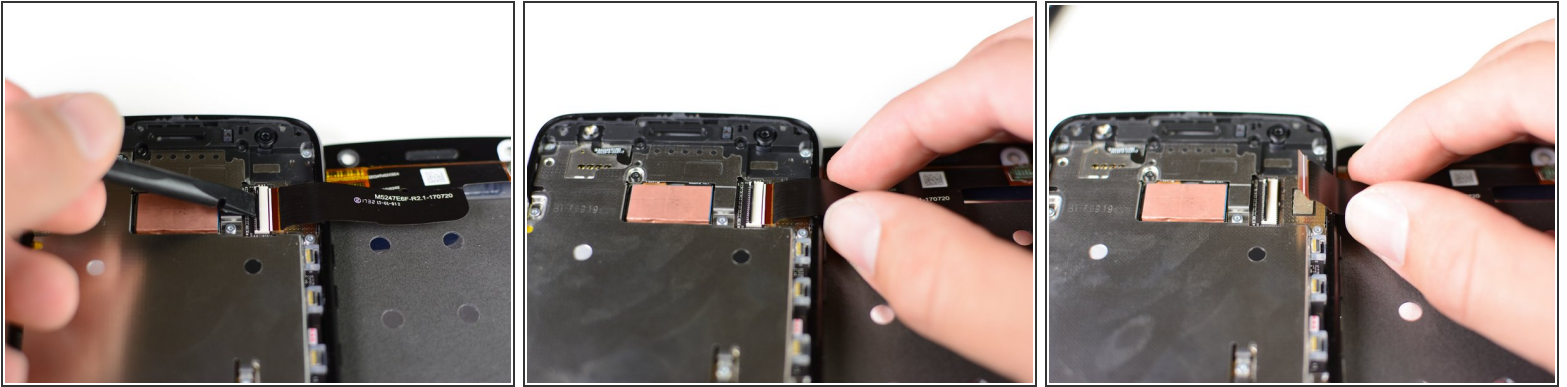


 Your Moto X4 may not be water resistant after reassembly.

 Before beginning the disassembly of your Moto X4, discharge the battery below 25%. A charged lithium-ion battery can catch fire or explode if accidentally punctured.

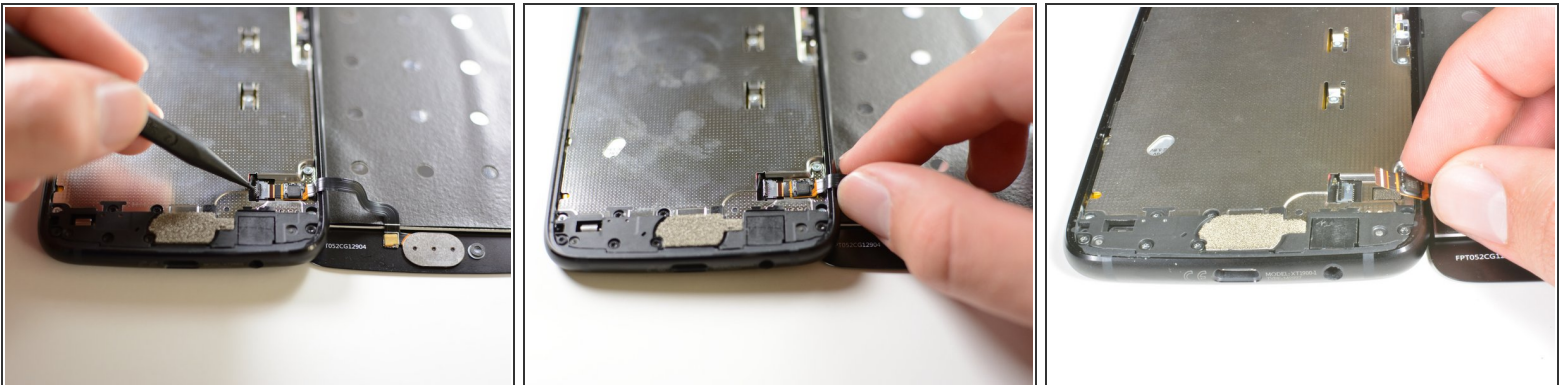
- Use an [iOpener](#) or a heat gun to heat up all four edges of the display until it's slightly too hot to touch, in order to soften the adhesive holding it in place.
 - Slide a thin pry tool such as an opening pick or playing card underneath the edge of the display, and work it carefully around the entire perimeter of the phone to slice through the adhesive.
 -  Don't insert your tool more than a few millimeters, or you may damage the display cables on the right edge.
 - Open the display from the left edge, and swing it to the right. Don't try to fully detach it yet.
-  When your repair is complete, thoroughly remove all the old adhesive surrounding the display, and clean the adhered surfaces with isopropyl alcohol and a lint-free cloth. Install your new display with a strong double-sided tape, such as [Tesa 61395](#).

Step 2



- Insert the spudger under the black tab by the top connector, then pry it up.
- Grab the cable and gently disconnect the screen from the rest of the Moto X4.

Step 3



- Insert the spudger under the black tab by the bottom connector, then pry it up.
- Grab the cable and gently disconnect the screen from the rest of the Moto X4.

To reassemble your device, follow these instructions in reverse order.