



Motorola Moto Z Play Transferring Display Components

Prereq-only guide for transferring components from an old display to a new one.

Written By: Jeff Suovanen



INTRODUCTION

Prereq-only guide for transferring components from an old display assembly to a new one.

TOOLS:

- [iOpener](#) (1)
 - [Tweezers](#) (1)
 - [iFixit Opening Picks set of 6](#) (1)
 - [Spudger](#) (1)
 - [Isopropyl Alcohol](#) (1)
 - [Utility Scissors](#) (1)
-

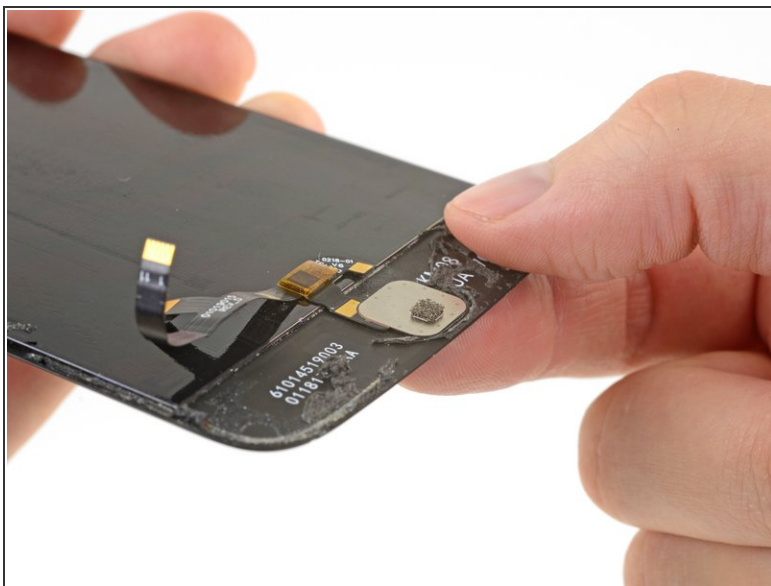
Step 1 — Display Components



★ If your replacement display does not already include a flash assembly and fingerprint sensor, complete the following steps to transfer those components from your old display to your new display.

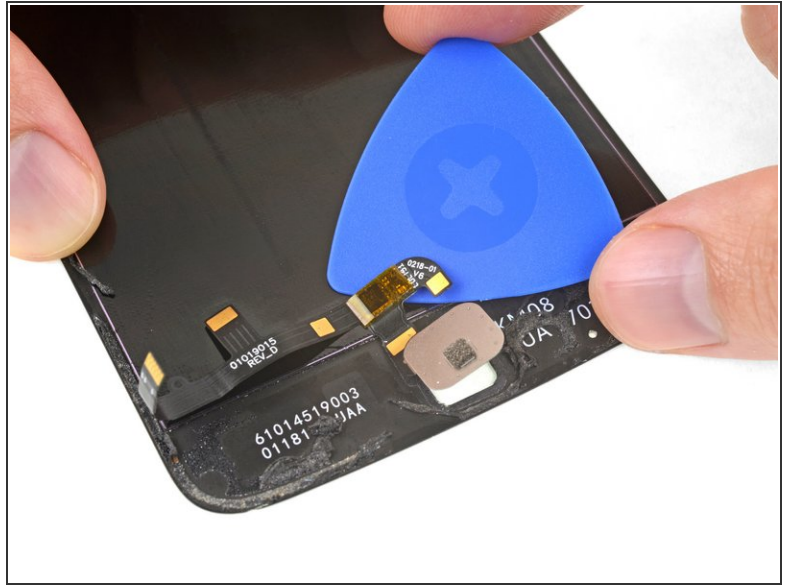
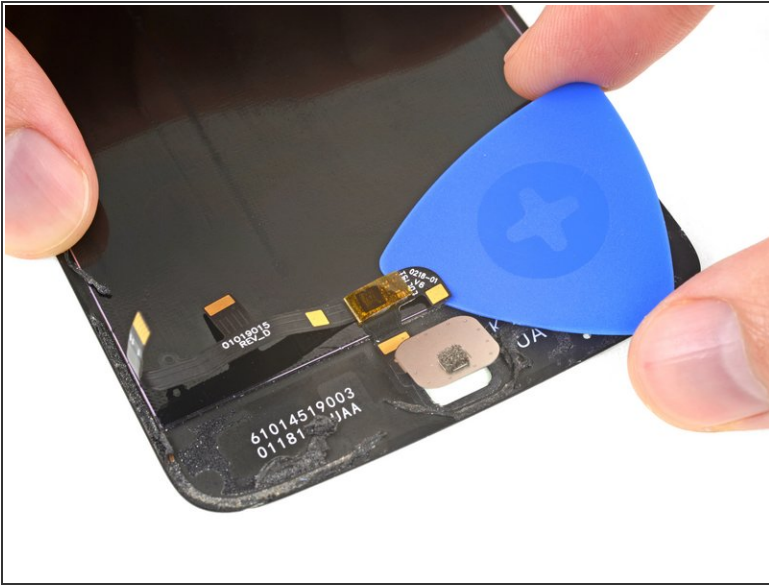
- Apply heat for 2-3 minutes to the bezel area below the display on your old display assembly, in order to soften the adhesive securing the fingerprint sensor.

Step 2




- Using your finger, press firmly on the outward-facing side of the fingerprint sensor until it separates from the display assembly.

Step 3



- Slide an opening pick underneath the fingerprint sensor's flex cable, and carefully cut through the adhesive securing it in place.

 Be careful not to damage the flex cable. If necessary, apply more heat to further soften the adhesive.

Step 4



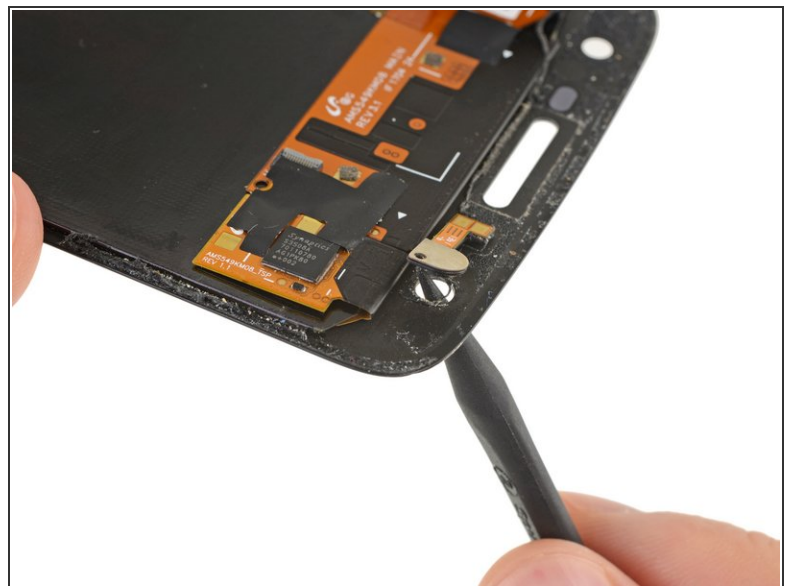
- Remove the fingerprint sensor from the old display and set it aside.

Step 5



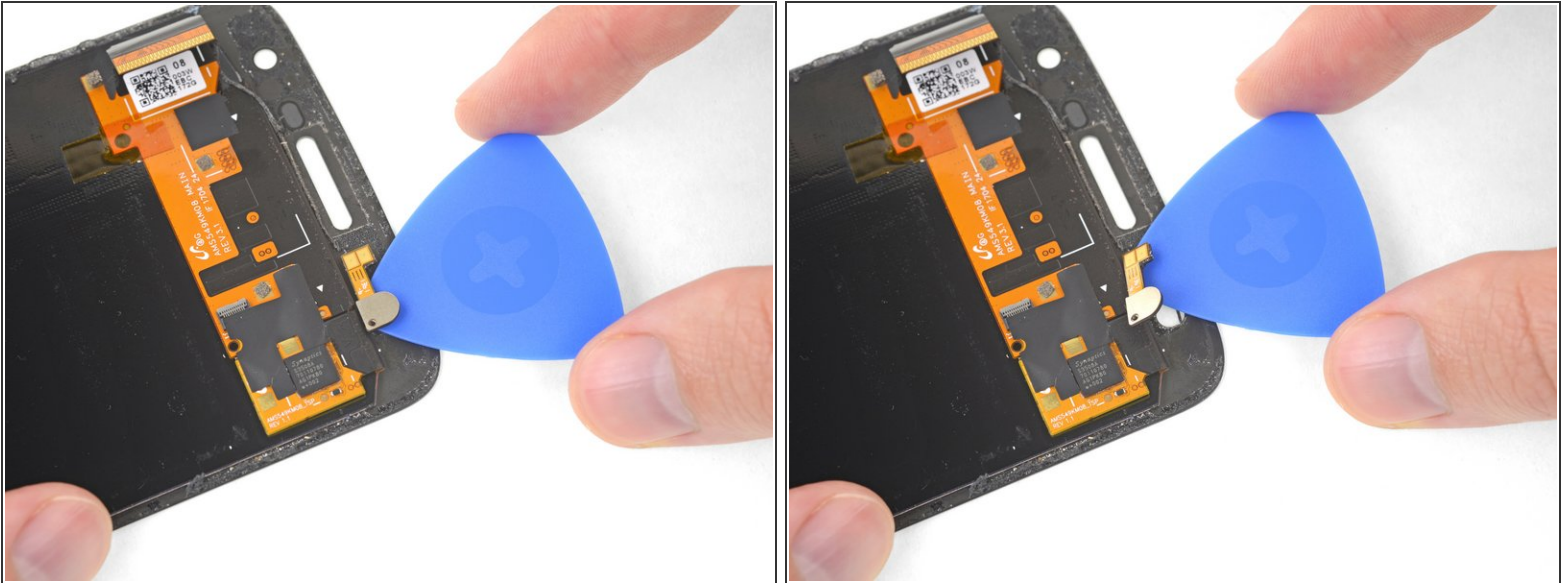
- Apply heat for 2-3 minutes to the top bezel area above the display on your old display assembly, in order to soften the adhesive securing the front camera flash.

Step 6



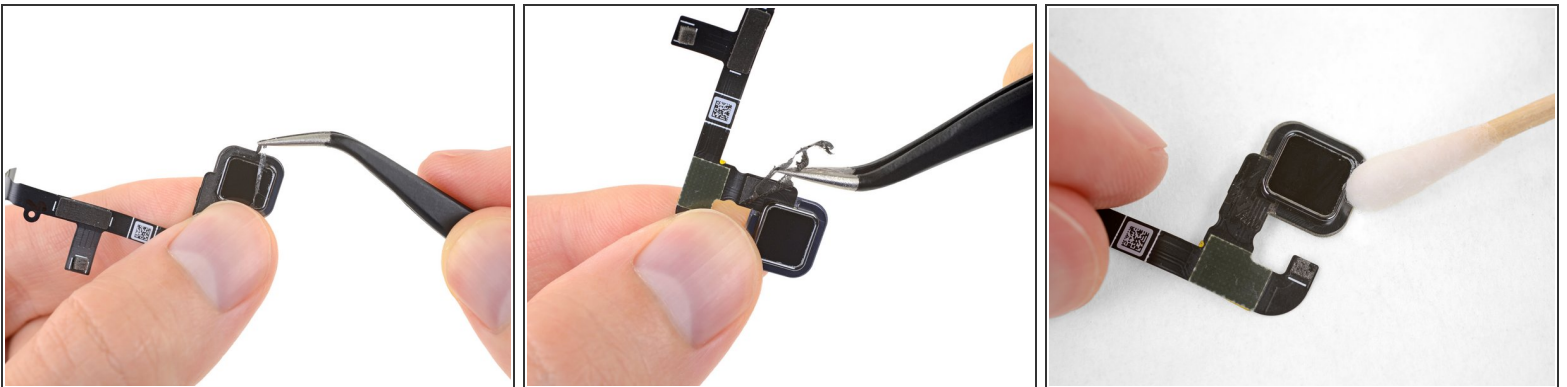
- Use the point of a spudger to push the outward-facing side of the camera flash until it separates from the display assembly.

Step 7



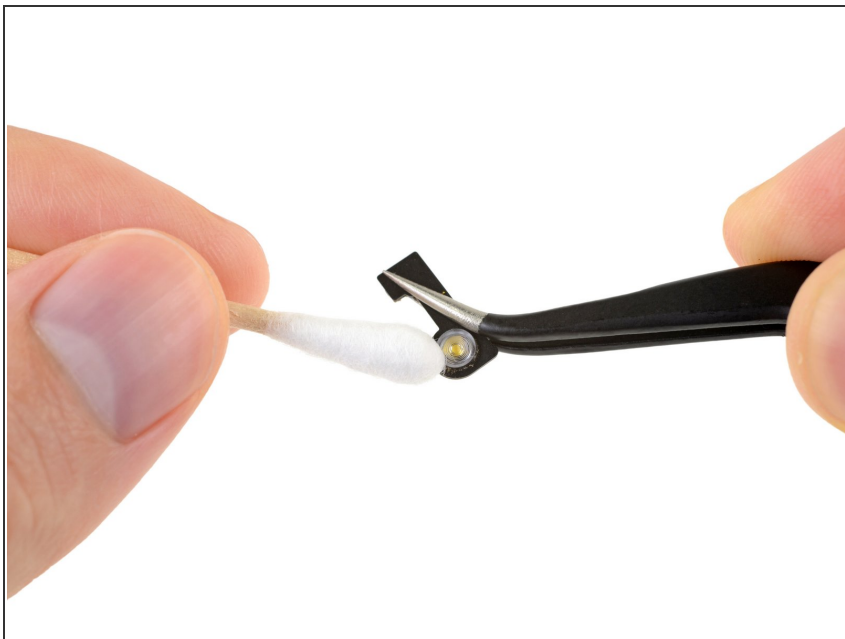
- Slide an opening pick underneath the flash flex cable, and carefully cut through the adhesive securing it in place.
- Remove the front camera flash and set it aside.

Step 8



- Carefully peel away and remove any remaining old adhesive from the fingerprint sensor.
- For best results, clean the adhered areas with isopropyl alcohol to help prep the surface for the new adhesive.

Step 9



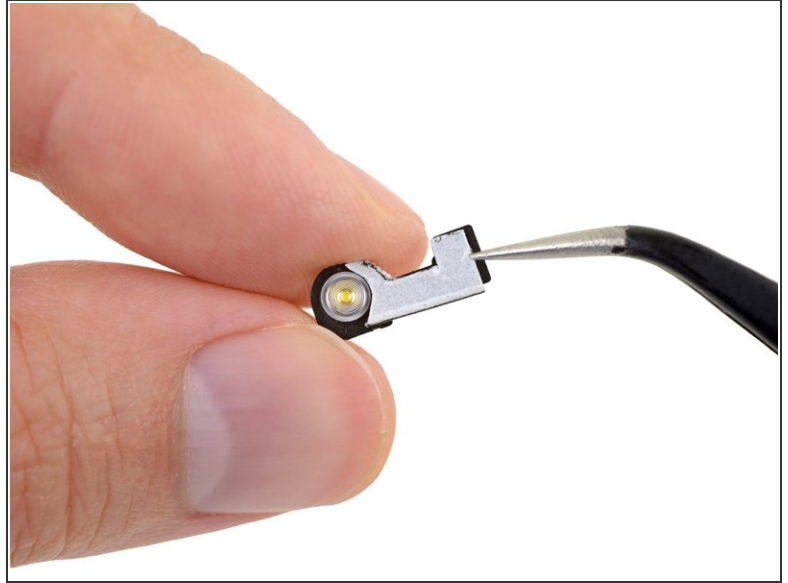
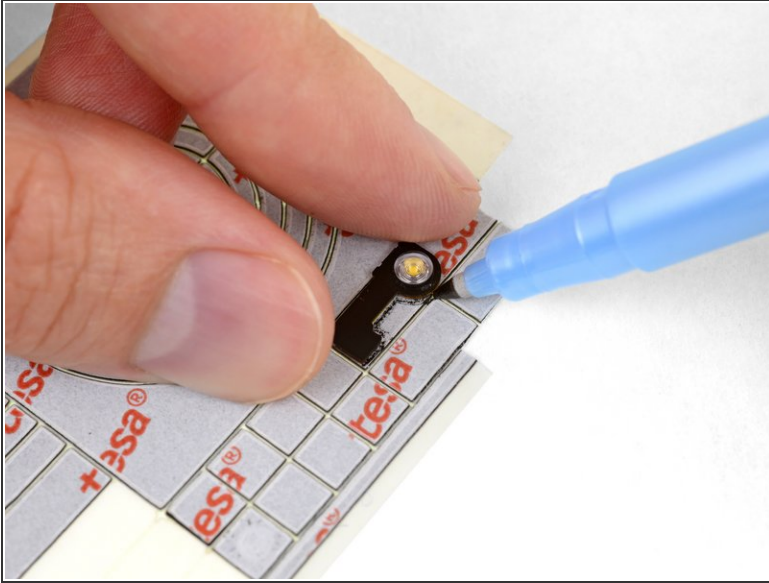
- Remove any remaining adhesive from the flash assembly as well. If desired, clean it thoroughly with isopropyl alcohol.

Step 10



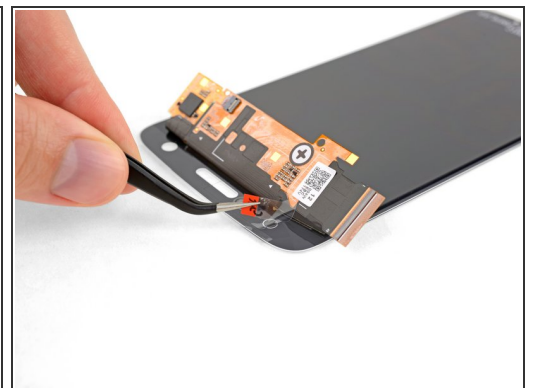
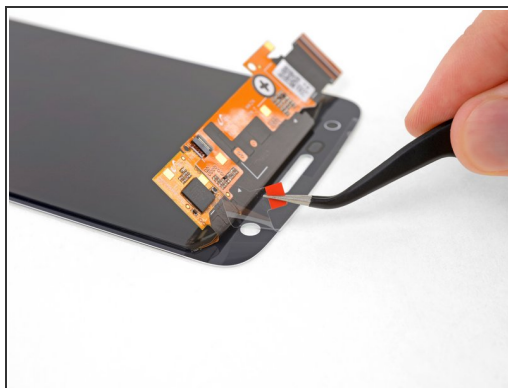
- Cut two pieces of L-shaped double-sided adhesive tape, and stick them firmly to the perimeter of the fingerprint sensor as shown.

Step 11



- Use the flash assembly and a fine-point pen or marker to trace out an appropriately-sized piece of double-sided adhesive tape.
- Cut the tape to about the right size and shape and apply it to the front-facing side of the flash assembly.

Step 12



- Remove any protective tapes or films from the back of your new display assembly.

Step 13



- Peel off and remove the liner from the adhesive tape on the fingerprint sensor.
- Place your new display face-down, and carefully lower the fingerprint sensor into position on the back.
- Press firmly on the back of the fingerprint sensor for several seconds to allow the adhesive to bond and secure it in place.

Step 14



- Peel away the liner from the adhesive tape on the flash assembly, and press the flash into place on the back of the new display.
- ✦ Be sure to install the flash assembly in its original, horizontal alignment, or the copper pads on the back won't line up with the spring contacts in the phone, and your flash won't work.

To reassemble your device, follow these instructions in reverse order.