



# Motorola Moto Z2 Play Fingerprint Sensor Replacement

How to replace the fingerprint sensor on your Moto Z2 Play.

Written By: Tarun Thiruma



# INTRODUCTION

Use this guide to replace the fingerprint sensor on your Motorola Z2 Play.

**Warning:** Because of the strong adhesive securing the display, minimal clearance for inserting your tools, and high heat required, there's a good chance of accidentally damaging the display when removing it. If you intend to re-use the display, take serious care when heating and inserting tools to separate the display from the rest of the device.



## TOOLS:

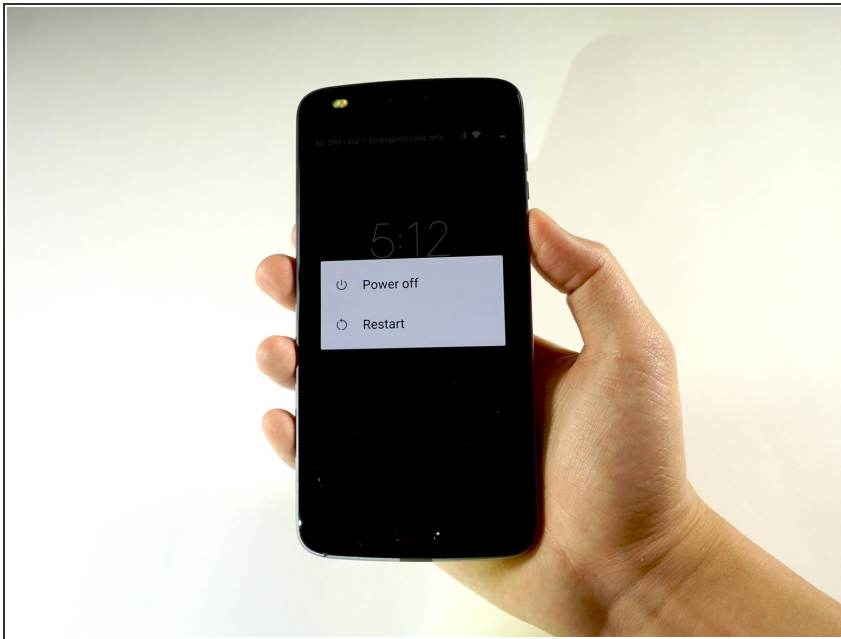
- [Tweezers](#) (1)
- [SIM Card Eject Tool](#) (1)
- [Heat Gun](#) (1)
- [Suction Handle](#) (1)
- [iFixit Opening Tools](#) (1)



## PARTS:

- [Moto Z2 Play Display Adhesive](#) (1)

## Step 1 — Screen Removal



- Power off your phone before you complete any replacement steps.

## Step 2



- Heat the edges of your Motorola Moto Z2 Play screen for two to three minutes with a heat gun. You adjust the heat gun to 85 degrees centigrade, and be careful not to hold the heat gun on one position for too long; to avoid damaging, or "hotspotting" the LCD. The screen should be very warm, but not painful, to the touch. Reheat as necessary.

⚠ If screen is cracked put strong adhesive tape across the screen in order to avoid breaking the screen further and receiving cuts.

ⓘ If you don't have access to a heat gun, a hair dryer can be used.

### Step 3



- Place suction cup in the middle of the screen and press down.

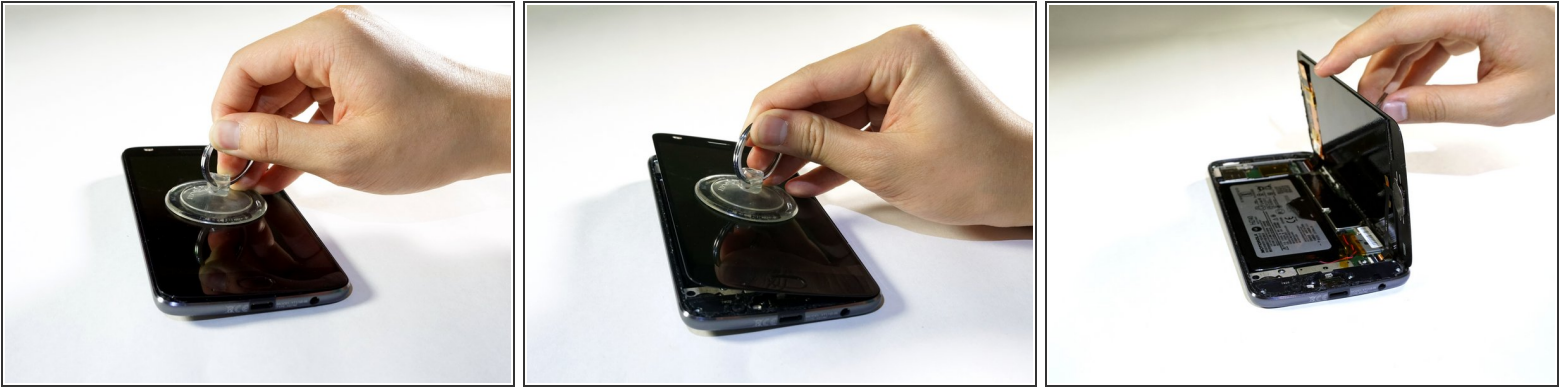
### Step 4



- Pry the screen by wedging the plastic opening tool under the screen at the charging port.
- Work your way around the screen with the plastic opening tool.
- ⚠ When you pry near the top-right and bottom-right corners, be careful not to pry too far, or you risk damaging [the display cable](#).
- ⓘ Complete these steps carefully because the screen is delicate and can easily crack. If the screen begins to resist prying, reheat the adhesive with your heat gun.



## Step 5



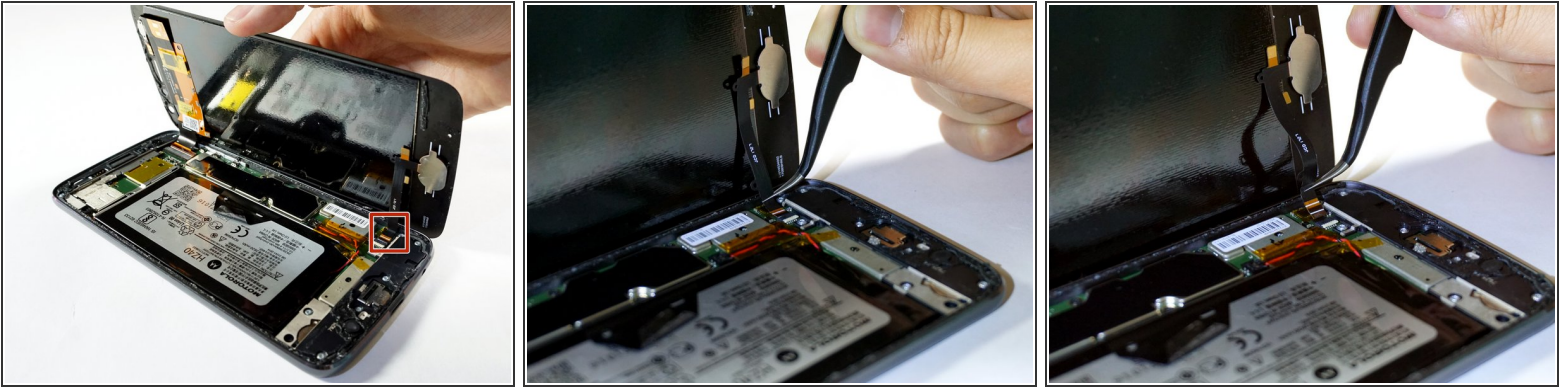
- Use a suction cup to lift up screen from left to right.
- i** If you don't have a suction cup, wedge a spudger or a small plastic card under the screen and lift slowly.
- i** Failure to lift screen from left to right can cause damage to interior wires of your phone.

## Step 6



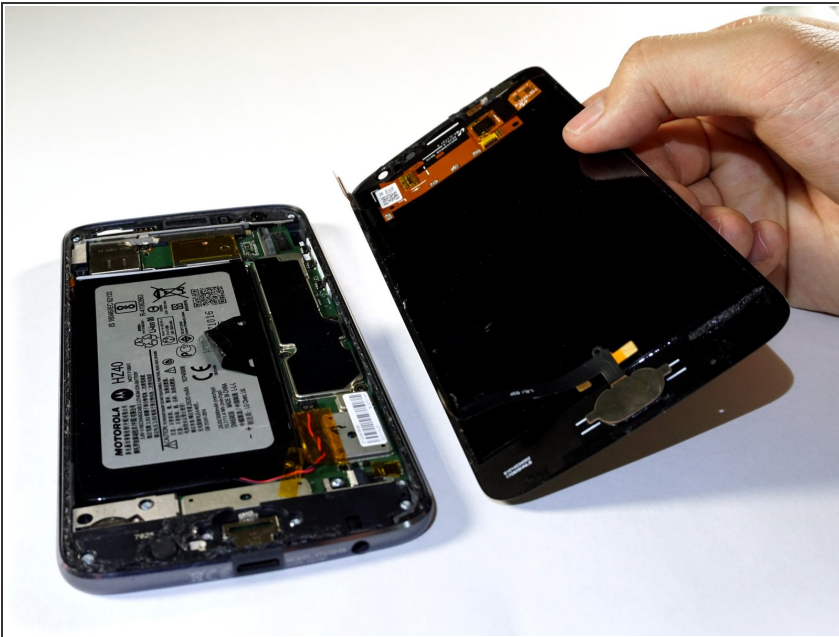
- Identify ribbon connector at the top right of the phone.
- Pry the black locking bar up gently with a plastic opening tool.
- Remove the ribbon wires by pulling them out of the connector with a tweezer.
- i** The locking bar is the small black bar located on the digitizer's ZIF connector.
- ✦** Be sure to push the locking bar back down using a spudger after you put the ribbon wire back in since the lock does not lock automatically.

## Step 7



- Identify the ribbon cable, located at the bottom right of the phone.
  - Disconnect the ribbon cable, located at the bottom right of the phone, by pulling out and back with tweezers.
- i** Excessive force is not needed.

## Step 8



- Lift the screen from the phone to completely detach.
- i** If screen doesn't detach, go back to step 7 and 8 to make sure the bar is unlocked and ribbon connector is fully detached.
- ★** During reassembly, you may need to apply or replace the display adhesive on your display assembly. Use our [display adhesive application guide](#) to apply the adhesive and reseal your device.

## Step 9 — Fingerprint Sensor



- [Apply an iOpener](#) to the bottom edge of the display assembly for about a minute to loosen the adhesive beneath the fingerprint sensor.
- ❗ A heat gun may also be used, but take care to not heat one area of the display assembly too long, as this could damage the display.

## Step 10



- Carefully pry off the fingerprint sensor by lifting it with the edge of an opening pick.



## Step 11



- Remove the fingerprint sensor with a pair of tweezers.

Compare your new replacement part to the original part—you may need to transfer remaining components or remove adhesive backings from the new part before installing.

**To reassemble your device, follow the above steps in reverse order.**

Take your e-waste to an [R2 or e-Stewards certified recycler](#).

Repair didn't go as planned? Check out our [Answers community](#) for troubleshooting help.