



Motorola Moto Z2 Play Screen Removal

This guide is a pre-req only guide for the Moto Z2 Play

Written By: mitch miller





TOOLS:

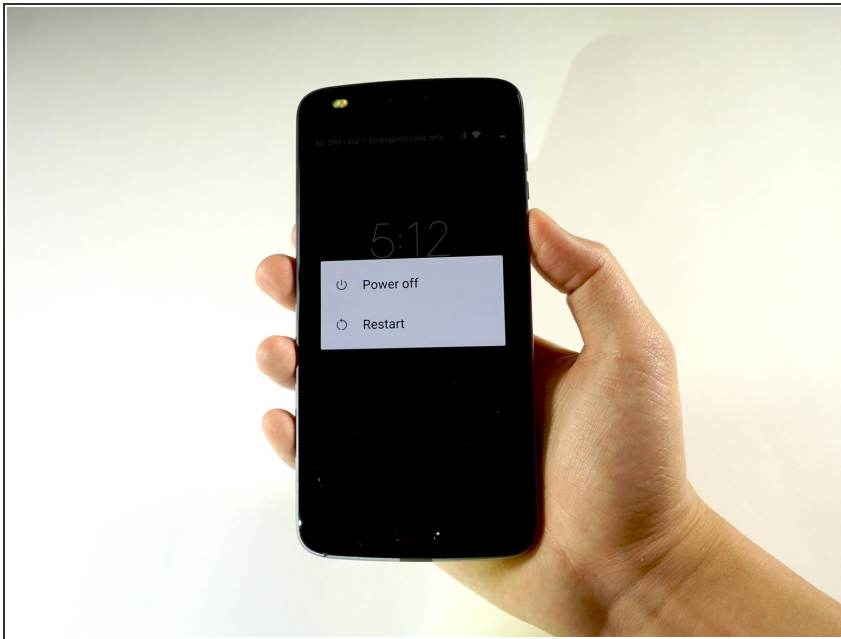
- [Tweezers](#) (1)
- [Heat Gun](#) (1)
- [Suction Handle](#) (1)
- [iFixit Opening Tools](#) (1)



PARTS:

- [Moto Z2 Play Screen](#) (1)
- [Moto Z2 Play Display Adhesive](#) (1)

Step 1 — Screen Removal



- Power off your phone before you complete any replacement steps.

Step 2



- Heat the edges of your Motorola Moto Z2 Play screen for two to three minutes with a heat gun. You adjust the heat gun to 85 degrees centigrade, and be careful not to hold the heat gun on one position for too long; to avoid damaging, or "hotspotting" the LCD. The screen should be very warm, but not painful, to the touch. Reheat as necessary.

⚠ If screen is cracked put strong adhesive tape across the screen in order to avoid breaking the screen further and receiving cuts.

ⓘ If you don't have access to a heat gun, a hair dryer can be used.

Step 3





- Place suction cup in the middle of the screen and press down.

Step 4

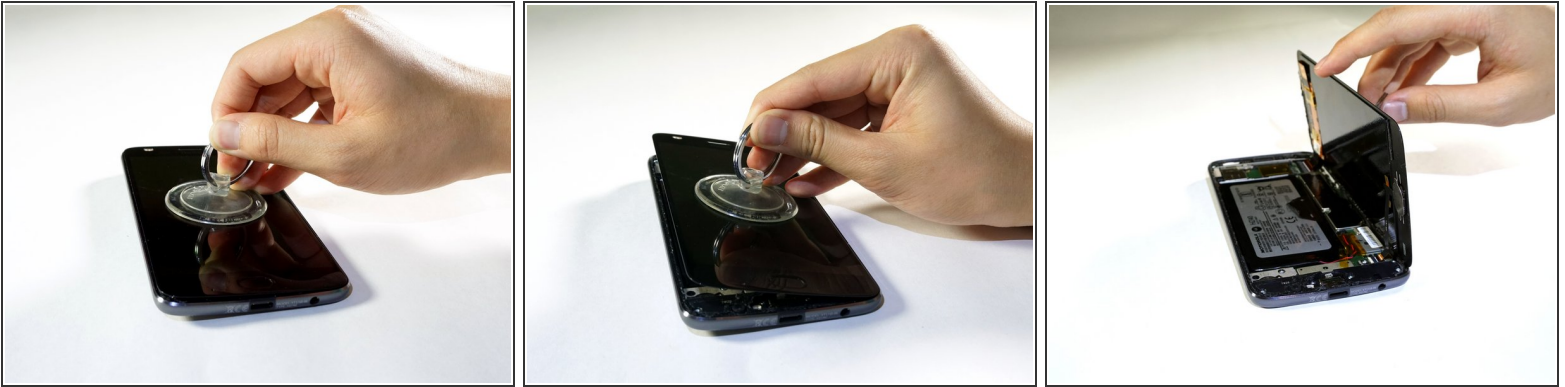


- Pry the screen by wedging the plastic opening tool under the screen at the charging port.
- Work your way around the screen with the plastic opening tool.

 When you pry near the top-right and bottom-right corners, be careful not to pry too far, or you risk damaging [the display cable](#).

-  Complete these steps carefully because the screen is delicate and can easily crack. If the screen begins to resist prying, reheat the adhesive with your heat gun.

Step 5



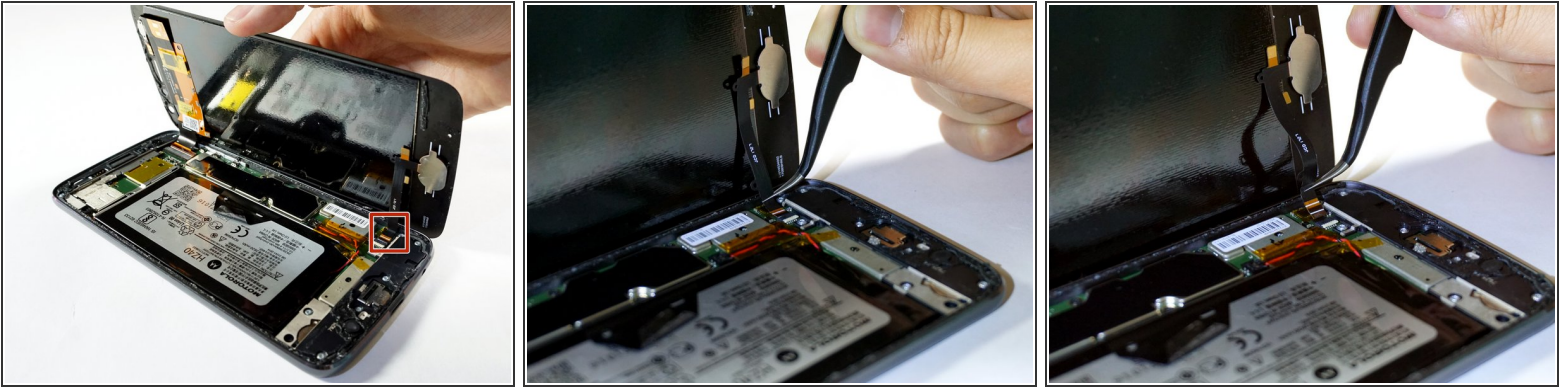
- Use a suction cup to lift up screen from left to right.
- i** If you don't have a suction cup, wedge a spudger or a small plastic card under the screen and lift slowly.
- i** Failure to lift screen from left to right can cause damage to interior wires of your phone.


Step 6



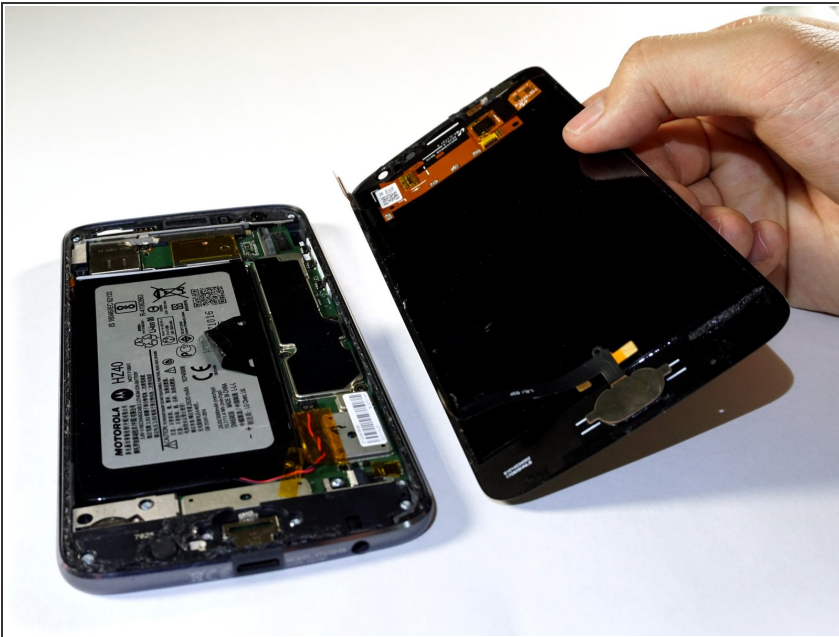
- Identify ribbon connector at the top right of the phone.
- Pry the black locking bar up gently with a plastic opening tool.
- Remove the ribbon wires by pulling them out of the connector with a tweezer.
- i** The locking bar is the small black bar located on the digitizer's ZIF connector.
- ✦** Be sure to push the locking bar back down using a spudger after you put the ribbon wire back in since the lock does not lock automatically.



Step 7



- Identify the ribbon cable, located at the bottom right of the phone.
 - Disconnect the ribbon cable, located at the bottom right of the phone, by pulling out and back with tweezers.
-  Excessive force is not needed.

Step 8



- Lift the screen from the phone to completely detach.
-  If screen doesn't detach, go back to step 7 and 8 to make sure the bar is unlocked and ribbon connector is fully detached.
-  During reassembly, you may need to apply or replace the display adhesive on your display assembly. Use our [display adhesive application guide](#) to apply the adhesive and reseal your device.