



Motorola Moto Z2 Play Screen Replacement

How to replace a broken or non-responsive screen on your Motorola Moto Z2 Play.

Written By: mitch miller



INTRODUCTION

Use this guide to remove or replace the screen on your Motorola Moto Z3 Play.

Warning: Because of the strong adhesive securing the display, minimal clearance for inserting your tools, and high heat required, there's a good chance of accidentally damaging the display when removing it. If you're replacing the display anyway, then you don't have to worry—but if you intend to re-use the display, take serious care when heating and inserting tools to separate the display from the rest of the device.



TOOLS:

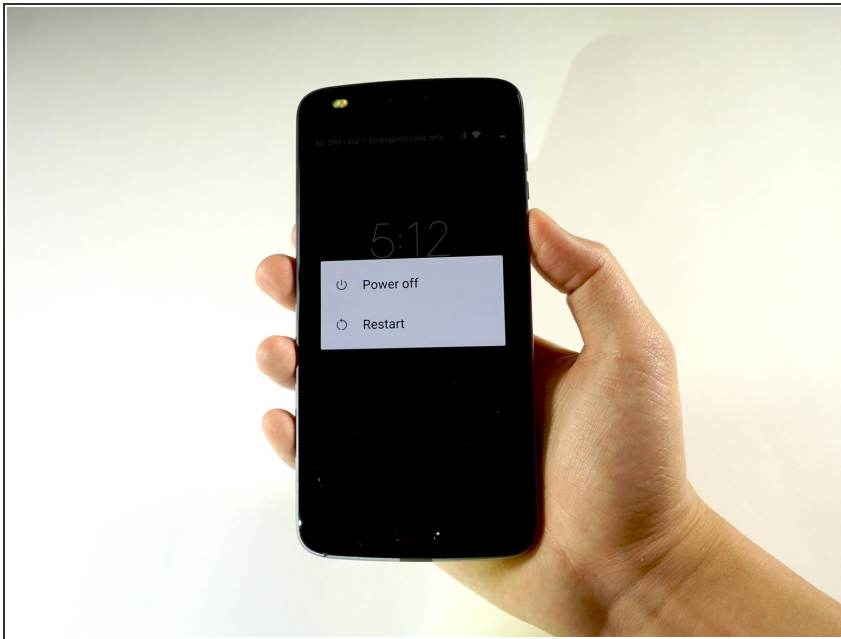
- [Tweezers](#) (1)
- [SIM Card Eject Tool](#) (1)
- [Heat Gun](#) (1)
- [Suction Handle](#) (1)
- [iFixit Opening Tools](#) (1)



PARTS:

- [Moto Z2 Play Screen](#) (1)
- [Moto Z2 Play Display Adhesive](#) (1)

Step 1 — Screen Removal



- Power off your phone before you complete any replacement steps.

Step 2



- Heat the edges of your Motorola Moto Z2 Play screen for two to three minutes with a heat gun. You adjust the heat gun to 85 degrees centigrade, and be careful not to hold the heat gun on one position for too long; to avoid damaging, or "hotspotting" the LCD. The screen should be very warm, but not painful, to the touch. Reheat as necessary.

⚠ If screen is cracked put strong adhesive tape across the screen in order to avoid breaking the screen further and receiving cuts.

ⓘ If you don't have access to a heat gun, a hair dryer can be used.

Step 3



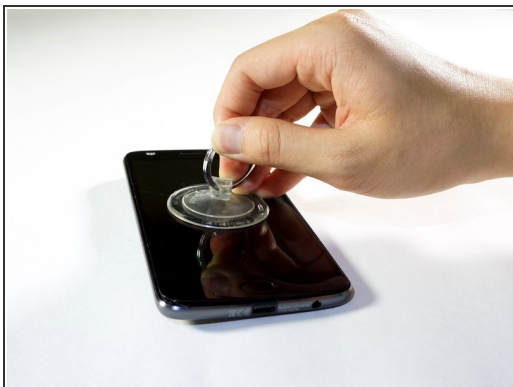
- Place suction cup in the middle of the screen and press down.

Step 4



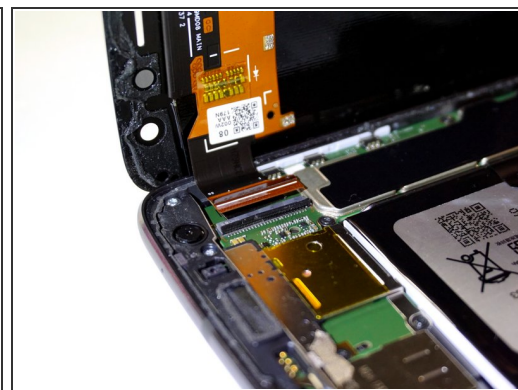
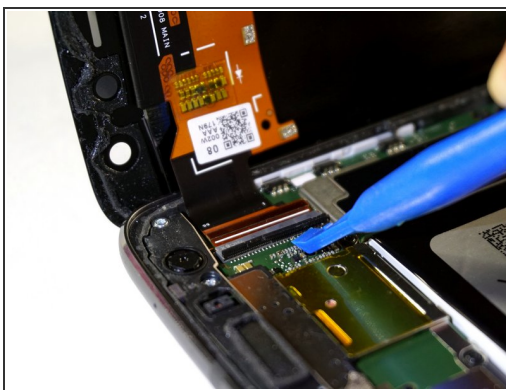
- Pry the screen by wedging the plastic opening tool under the screen at the charging port.
 - Work your way around the screen with the plastic opening tool.
- ⚠ When you pry near the top-right and bottom-right corners, be careful not to pry too far, or you risk damaging [the display cable](#).
- ⓘ Complete these steps carefully because the screen is delicate and can easily crack. If the screen begins to resist prying, reheat the adhesive with your heat gun.

Step 5



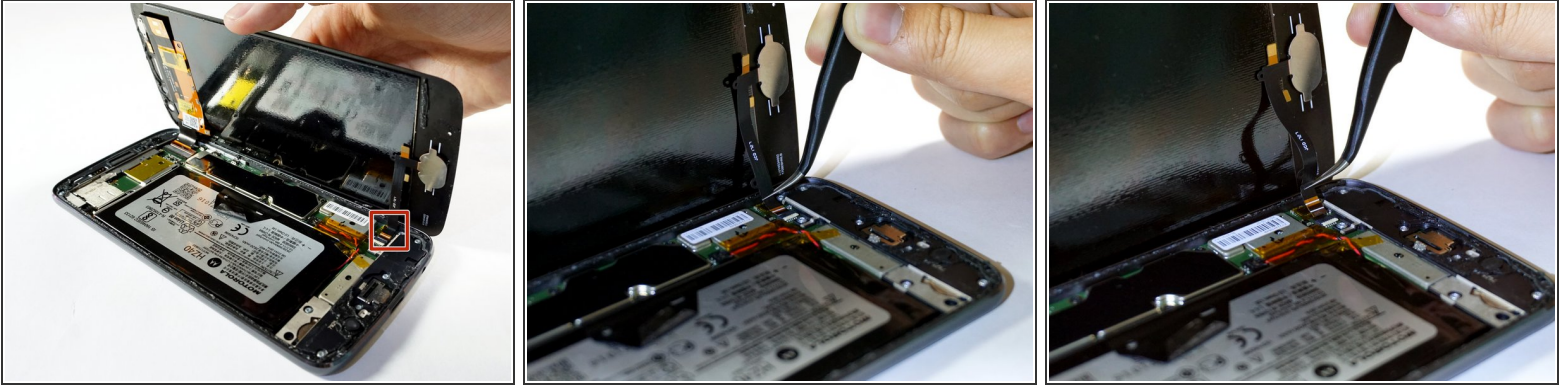
- Use a suction cup to lift up screen from left to right.
- i* If you don't have a suction cup, wedge a spudger or a small plastic card under the screen and lift slowly.
- i* Failure to lift screen from left to right can cause damage to interior wires of your phone.


Step 6



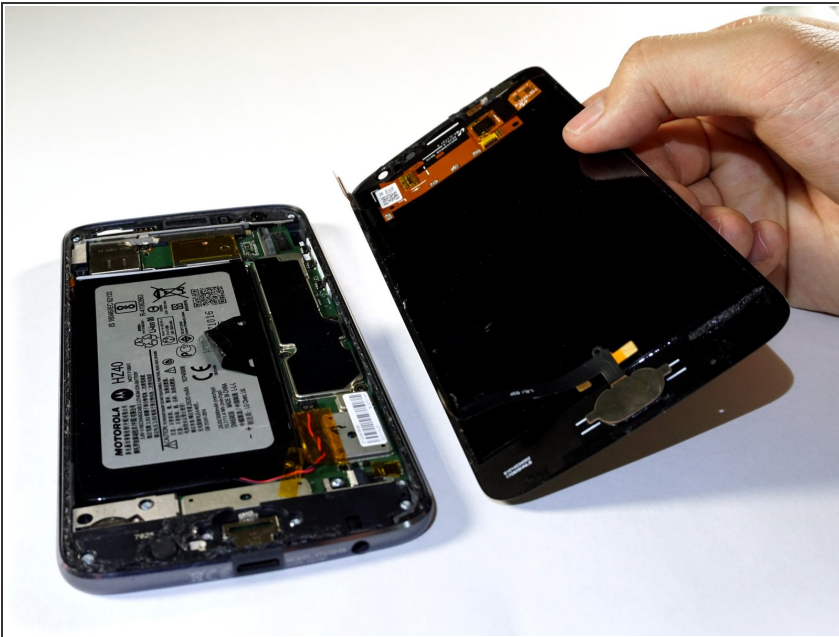
- Identify ribbon connector at the top right of the phone.
- Pry the black locking bar up gently with a plastic opening tool.
- Remove the ribbon wires by pulling them out of the connector with a tweezer.
- i* The locking bar is the small black bar located on the digitizer's ZIF connector.
- ✦* Be sure to push the locking bar back down using a spudger after you put the ribbon wire back in since the lock does not lock automatically.



Step 7



- Identify the ribbon cable, located at the bottom right of the phone.
 - Disconnect the ribbon cable, located at the bottom right of the phone, by pulling out and back with tweezers.
-  Excessive force is not needed.

Step 8



- Lift the screen from the phone to completely detach.
-  If screen doesn't detach, go back to step 7 and 8 to make sure the bar is unlocked and ribbon connector is fully detached.
-  During reassembly, you may need to apply or replace the display adhesive on your display assembly. Use our [display adhesive application guide](#) to apply the adhesive and reseal your device.

Step 9 — Fingerprint Sensor Removal



- [Apply an iOpener](#) to the bottom edge of the display assembly for about a minute to loosen the adhesive beneath the fingerprint sensor.
- ❗ A heat gun may also be used, but take care to not heat one area of the display assembly for too long, as this could damage the display.

Step 10



- Carefully pry off the fingerprint sensor by lifting it with the edge of an opening pick.

Step 11



- Remove the fingerprint sensor with a pair of tweezers.
- ★ During reassembly, transfer the fingerprint sensor onto the new replacement display and press it into place.

Compare your new replacement part to the original part—you may need to transfer any remaining components or remove adhesive backings from the new part before installing.

To reassemble your device, follow the above steps in reverse order.

Take your e-waste to an R2 or e-Stewards certified recycler.

Repair didn't go as planned? Check out our Answers community for troubleshooting help.