



# Motorola Nextel i880 Antenna Replacement

Antenna replacement will ensure exceptional service and steady signal reception within the range of any sprint tower.

Written By: Ryan



## INTRODUCTION

The antenna is a vital piece of hardware in the i880. It is used to send and receive data submitted between this phone and other devices.



### TOOLS:

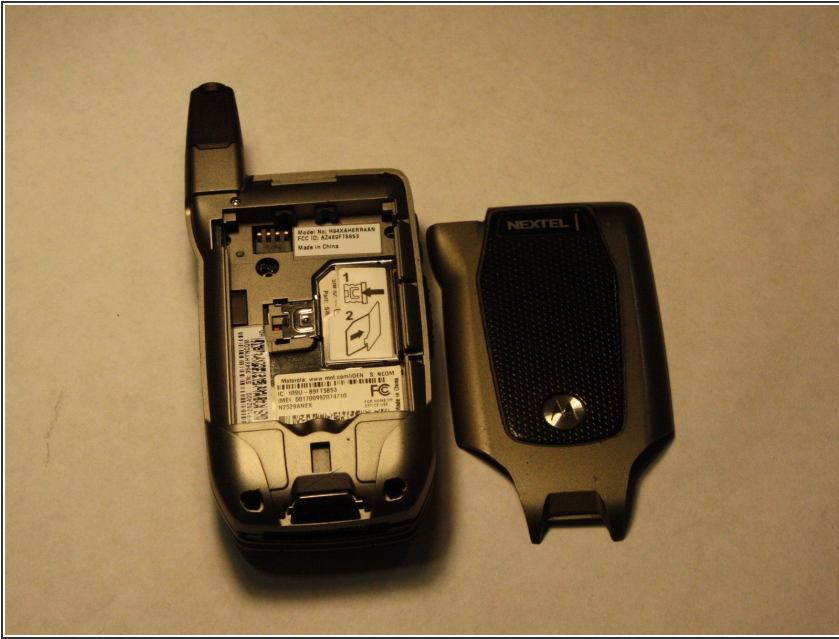
- [T4 Torx Screwdriver](#) (1)



### PARTS:

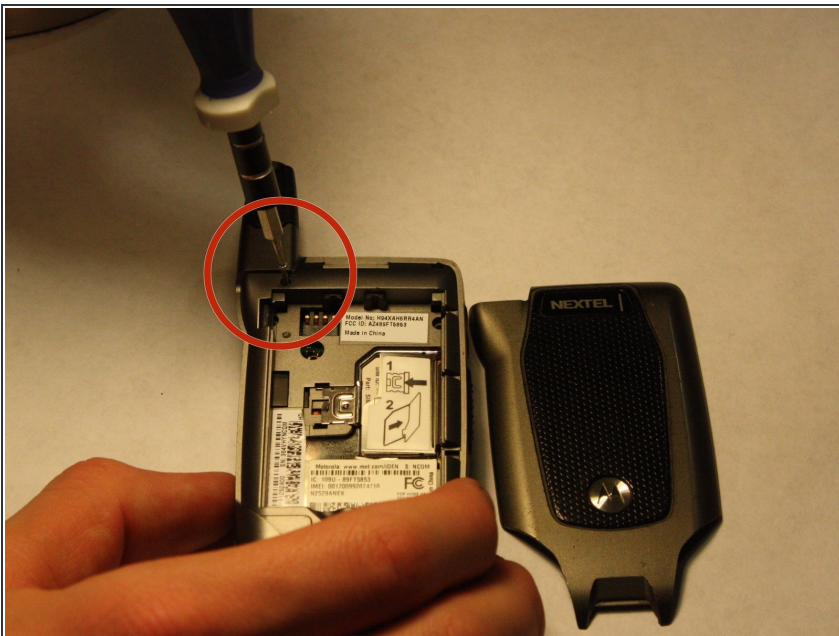
- [Motorola i880 Antenna](#) (1)

## Step 1 — Antenna



- Remove back cover of the phone by disengaging the clip and lifting up on the cover.

## Step 2



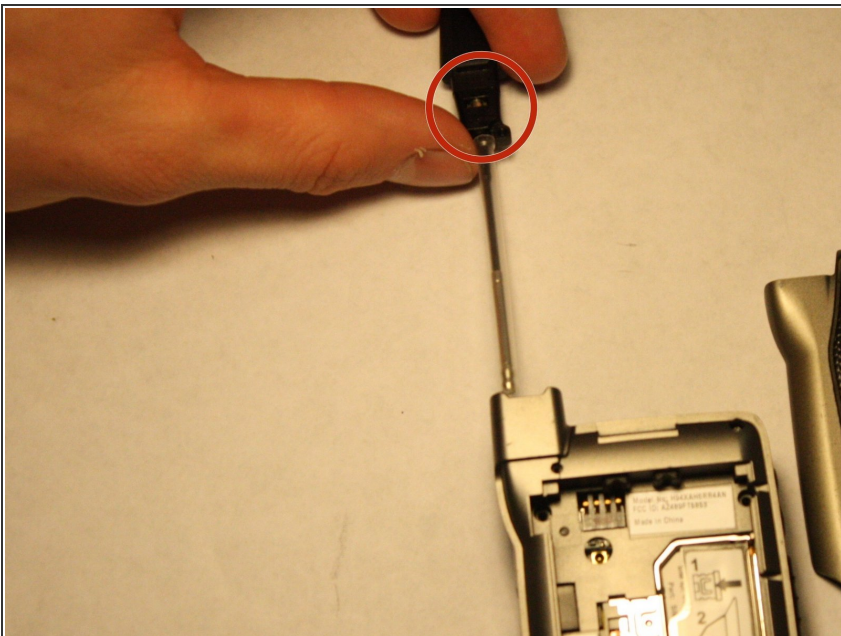
- Locate the screw on the top left portion of the phone; just below the antenna. Using a T4 Torx screwdriver remove the screw.

### Step 3



- Slide antenna out of the phone. Ensure that the protective plastic sleeve is not lost in removal.

### Step 4



- Slide and secure new antenna into position. Make sure metal receiver is facing forward.

## Step 5



- Reattach back cover and secure all components in place.

To reassemble your device, follow these instructions in reverse order.