



Motorola Nextel i880 Key Pad Replacement

The keypad is an important piece of the i880. It allows you to navigate through the phone. Without it you would not be able to make the phone function.

Written By: Danielle Matthews





TOOLS:

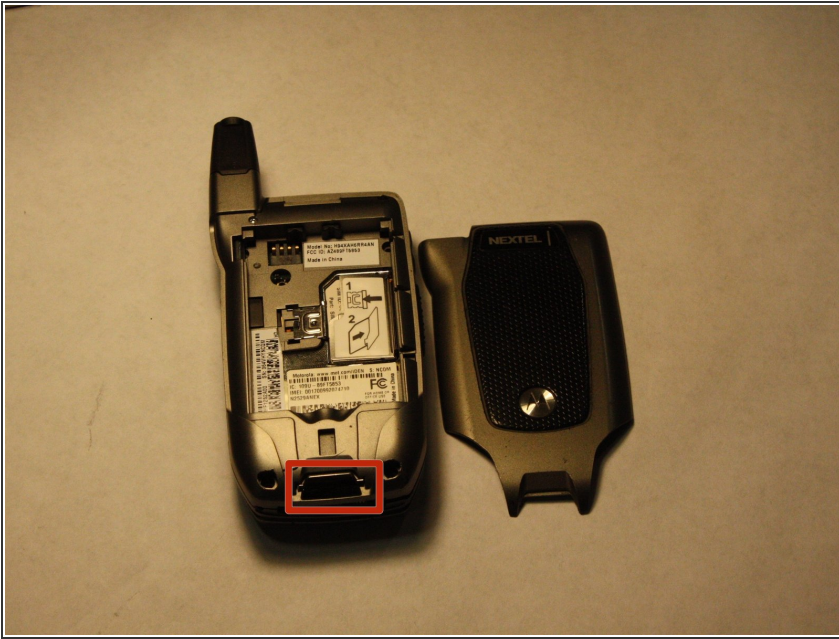
- [Tweezers](#) (1)
- [T4 Torx Screwdriver](#) (1)
- [Adhesive](#) (1)



PARTS:

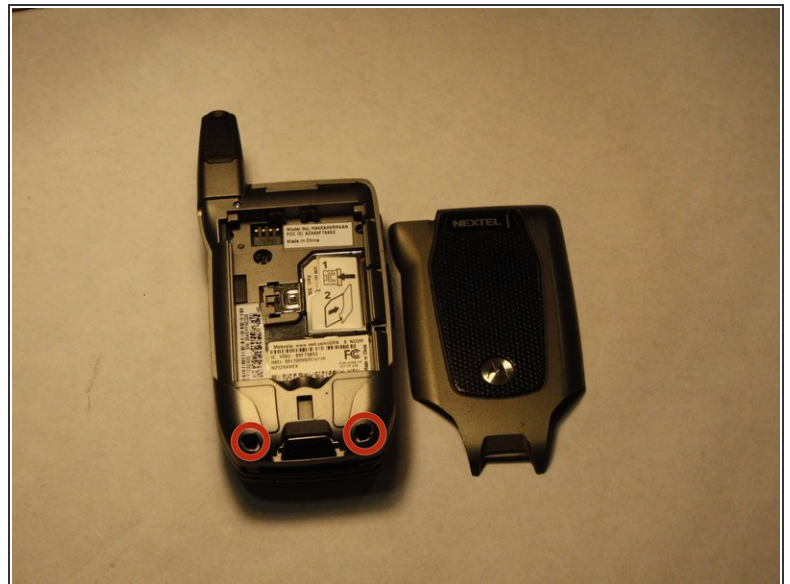
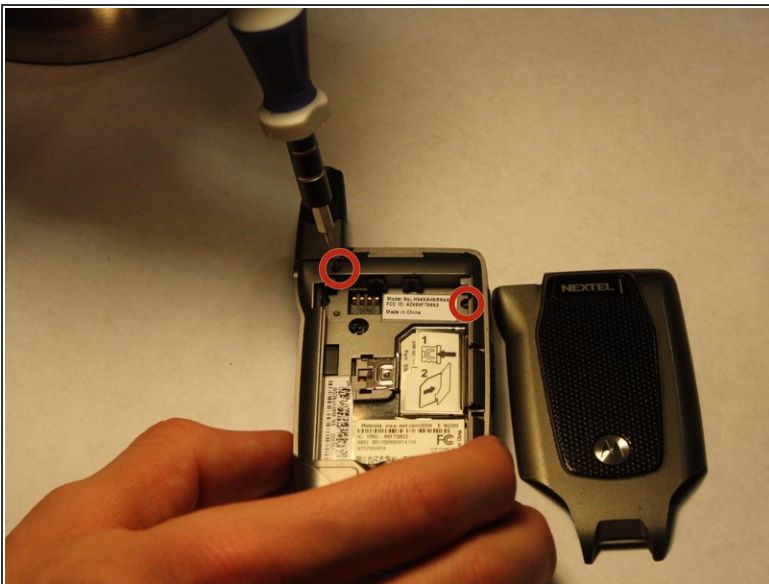
- [Replacement key pad](#) (1)

Step 1 — Key Pad



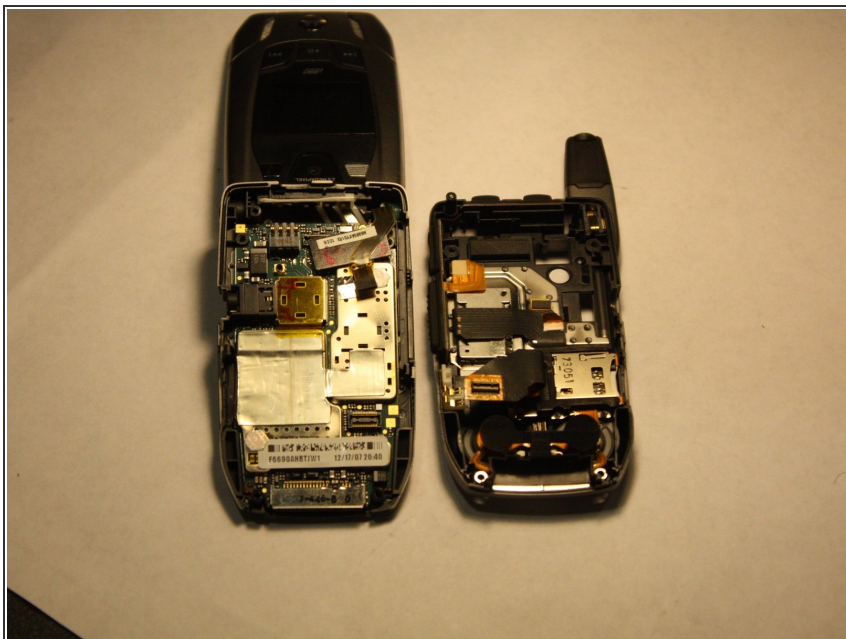
- Remove the back cover by sliding the clip and lifting up the bottom of the cover.

Step 2



- Remove screws 1 through 4.

Step 3



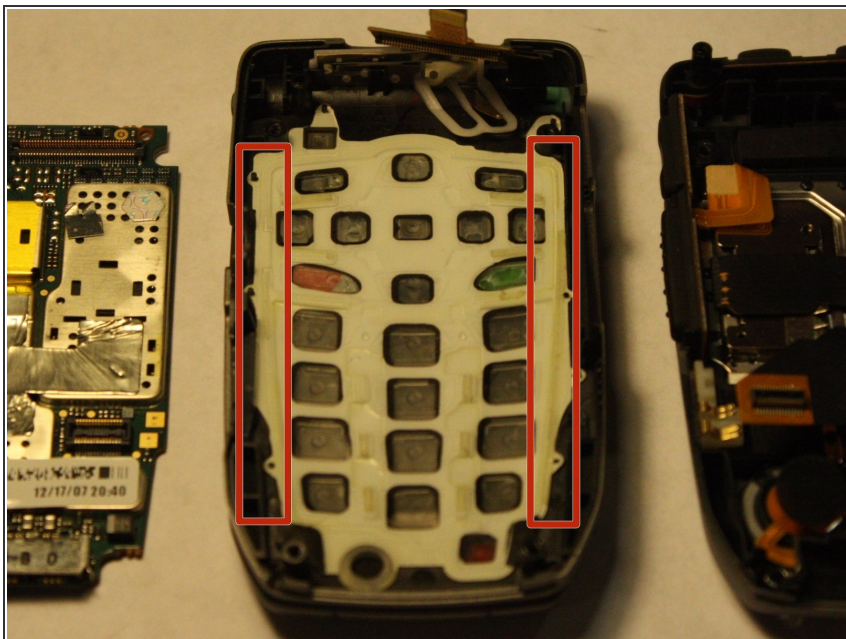
- Once all four screws are removed, you should be able to pop off the back half of the phone.

Step 4



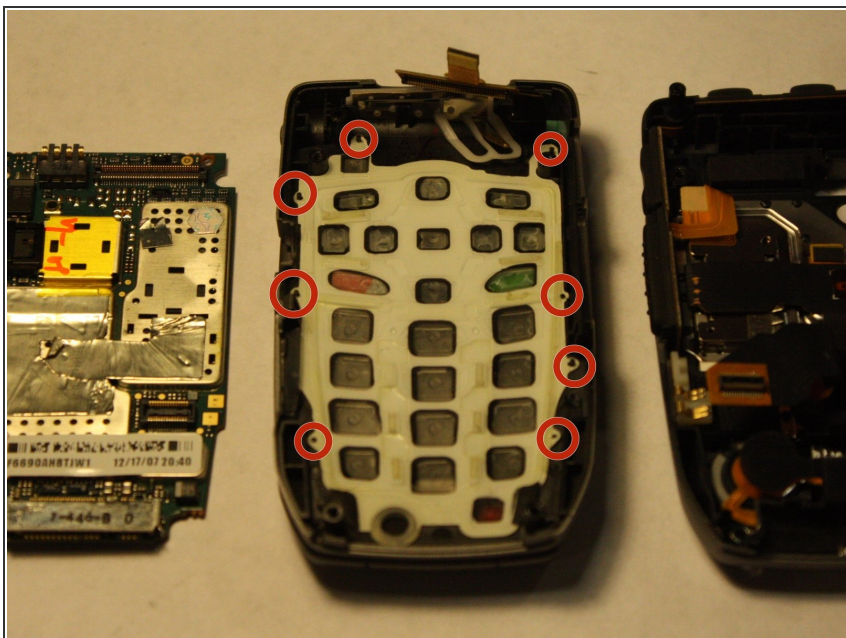
- Flip the logic board up to reveal the back of the keypad.

Step 5



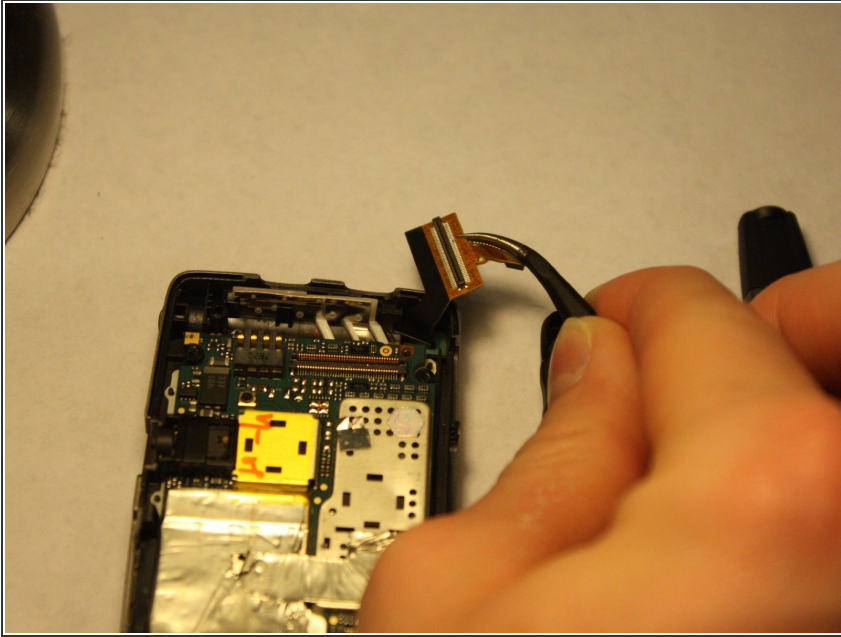
- Peel the back of the keypad off of the phone. (Highlighted area are the parts where you can begin to peel from). That white pad is what is being replaced.

Step 6



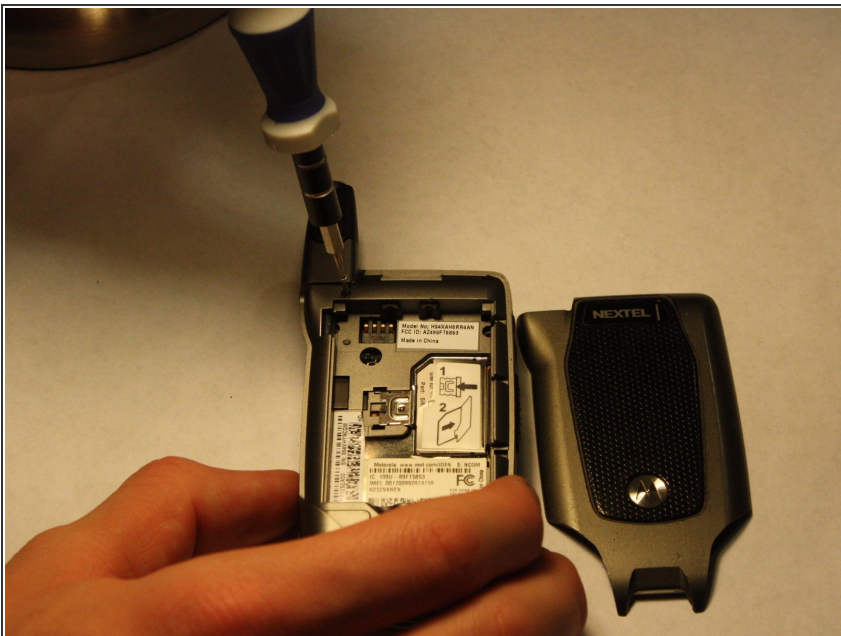
- Take your new key pad and line the holes up with the pegs sticking out of the phone. (Pegs are highlighted).
- Secure the rest of the key pad.

Step 7



- Put the logic board back into place and reattach cable number 1.

Step 8



- Snap the front and back of the phone back together and reinsert screws 1 through 4.

To reassemble your device, follow these instructions in reverse order.