



Motorola Nextel i880 Logic Board Replacement

This is the brain of the phone. It is where all the information is processed through to make the phone do what you tell it to.

Written By: Danielle Matthews





TOOLS:

- [T4 Torx Screwdriver](#) (1)
- [Tweezers](#) (1)



PARTS:

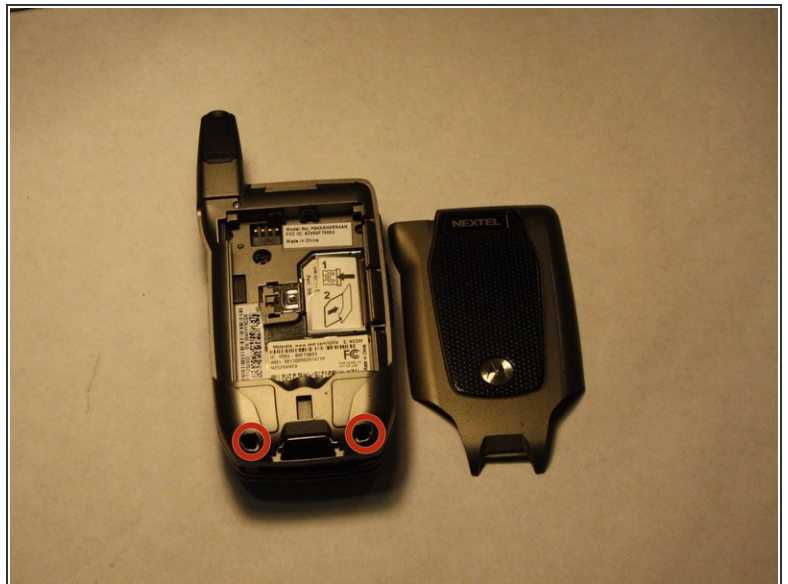
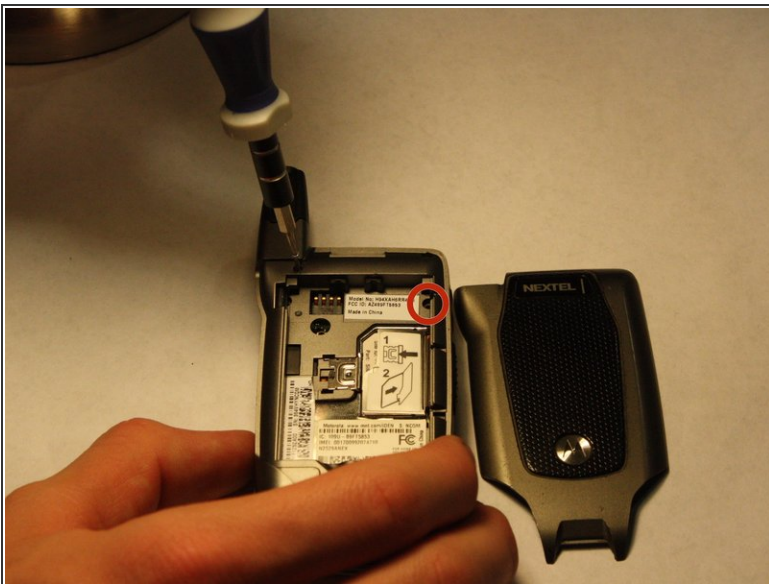
- [Replacement Logic Board](#) (1)

Step 1 — Logic Board



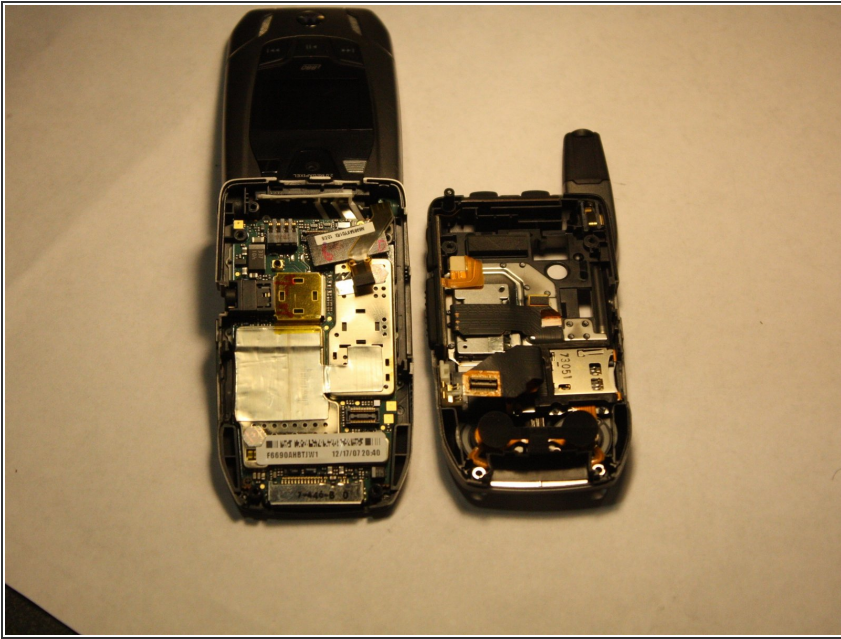
- Remove back cover of the phone by disengaging the clip and lifting up on the cover.

Step 2



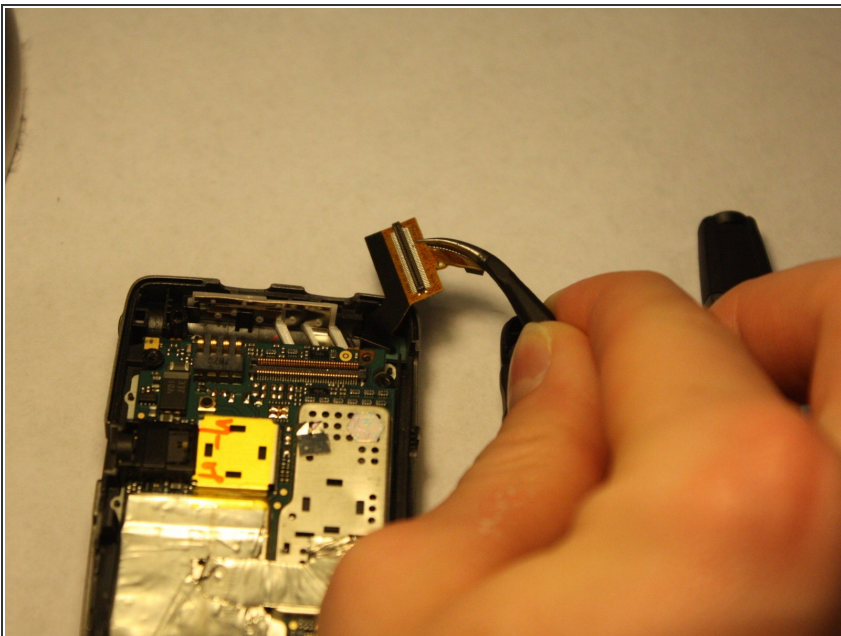
- Remove screws 1 through 4.

Step 3



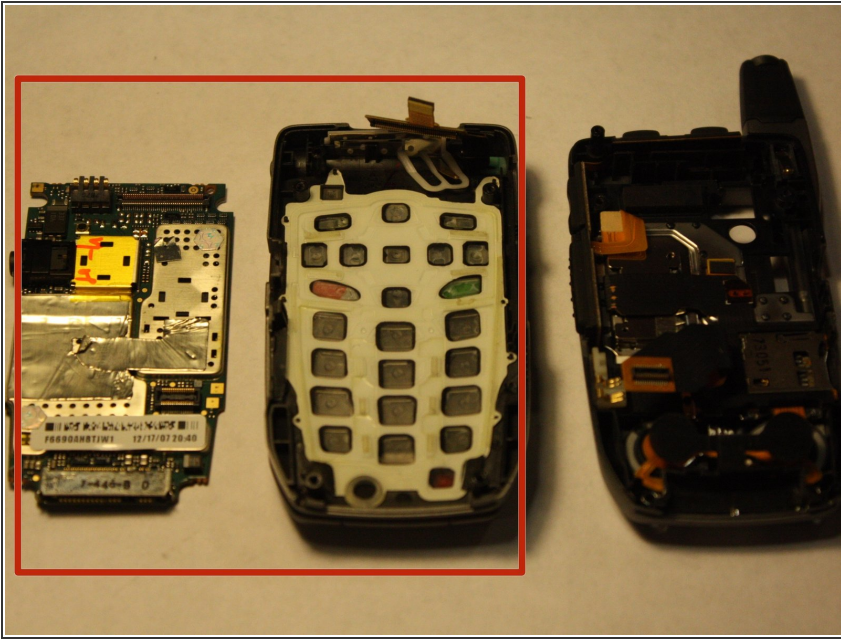
- Once all four screws are removed, you should be able to take off the back half of the phone.

Step 4



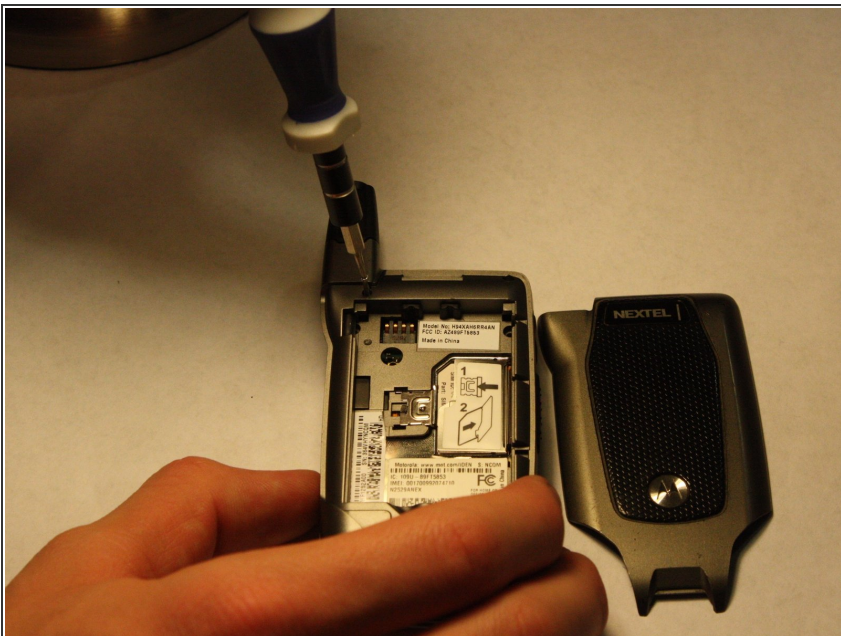
- Remove the connection at the top right of the circuit board.

Step 5



- Insert new logic board and reattach top right cable.

Step 6



- Snap the front and back of the phone back together and reinsert screws 1 through 4.

To reassemble your device, follow these instructions in reverse order.