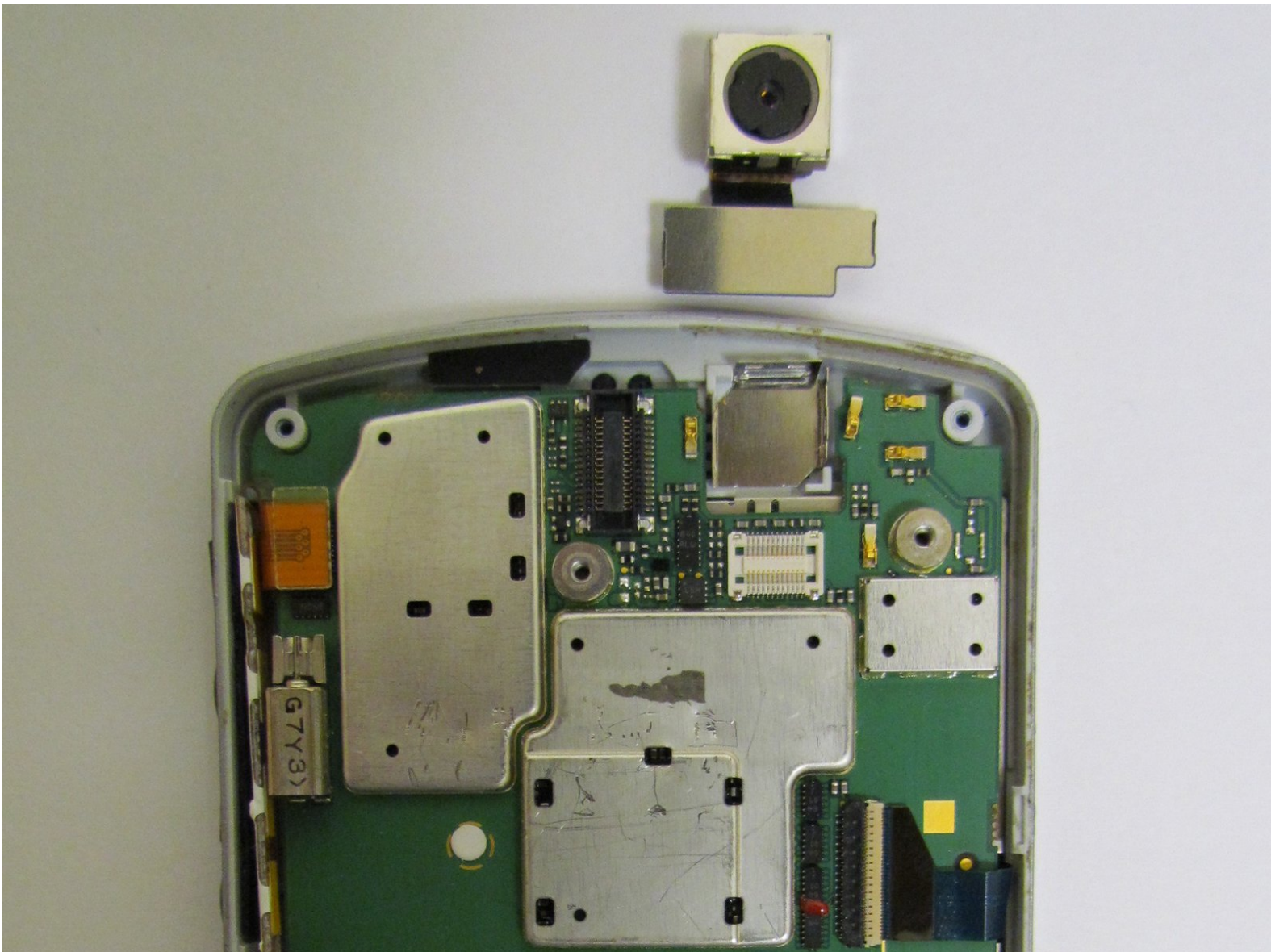




Motorola Q Global Camera Replacement

Replace a broken camera on your Motorola Q Global.

Written By: Jorge Vanegas Moran



INTRODUCTION

This guide will focus on disassembling the necessary components for the phone in order to get to the camera hardware and remove it from the motherboard.



TOOLS:

- [iFixit Opening Tools](#) (1)
 - [T5 Torx Screwdriver](#) (1)
-

Step 1 — Battery



- Turn the phone face down.
- Press and hold the release button in the middle of the back panel.
- Slide the bottom panel down to remove.

Step 2



- Remove the battery pack by prying it out with a fingernail, screw driver or other opening tool at the tab shown.

⚠ When reinserting the battery, make sure the contacts in the battery are lined up with the contacts in the phone.

Step 3 — Camera



- Press inward on the upper casing.

Step 4



- Slide the upper case to the right and lift up.
- Lift the camera sticker so that it doesn't get damaged.

Step 5



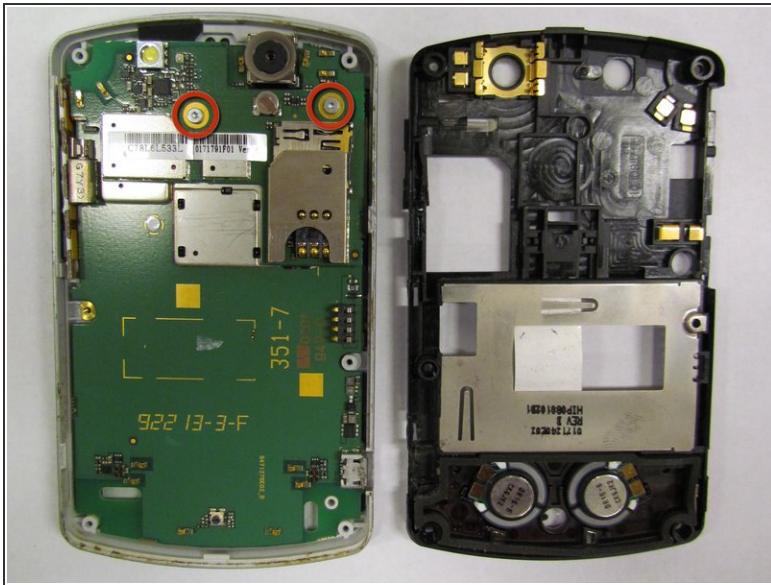
- Remove the six labeled screws with a T5 Torx Screwdriver.

Step 6



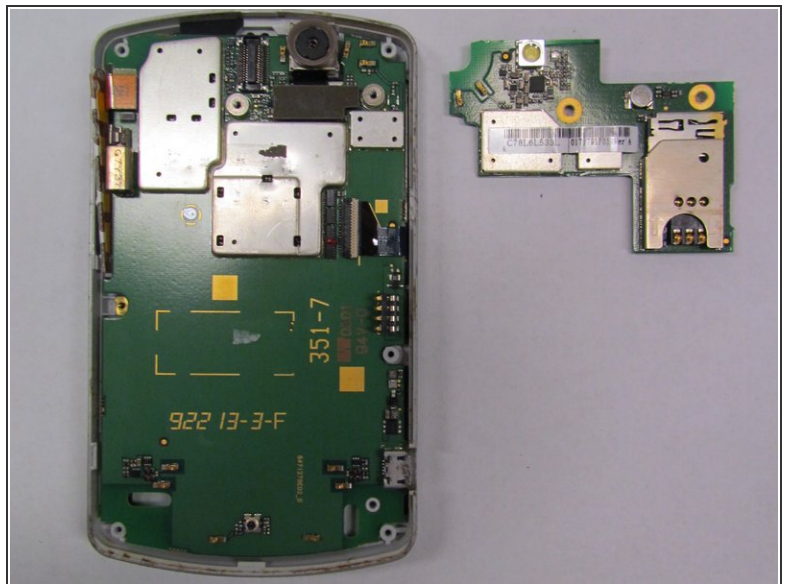
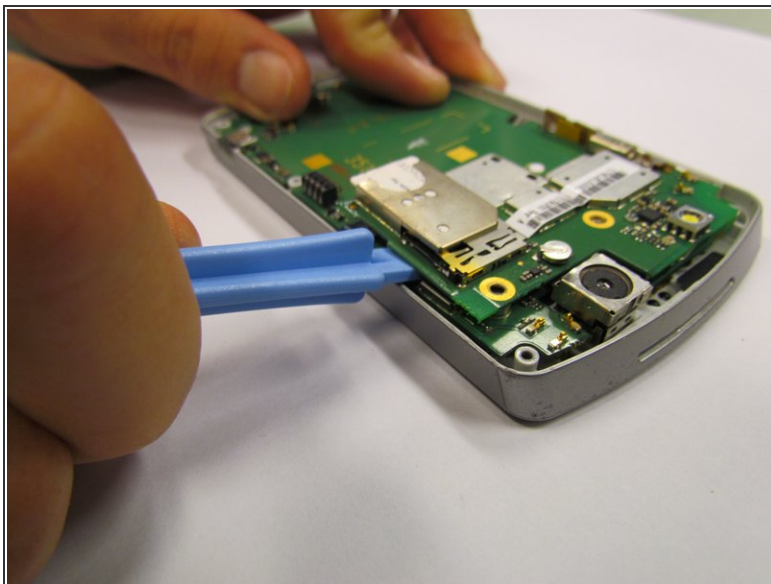
- Once the screws are removed, use the plastic opening tool to remove the black casing.

Step 7



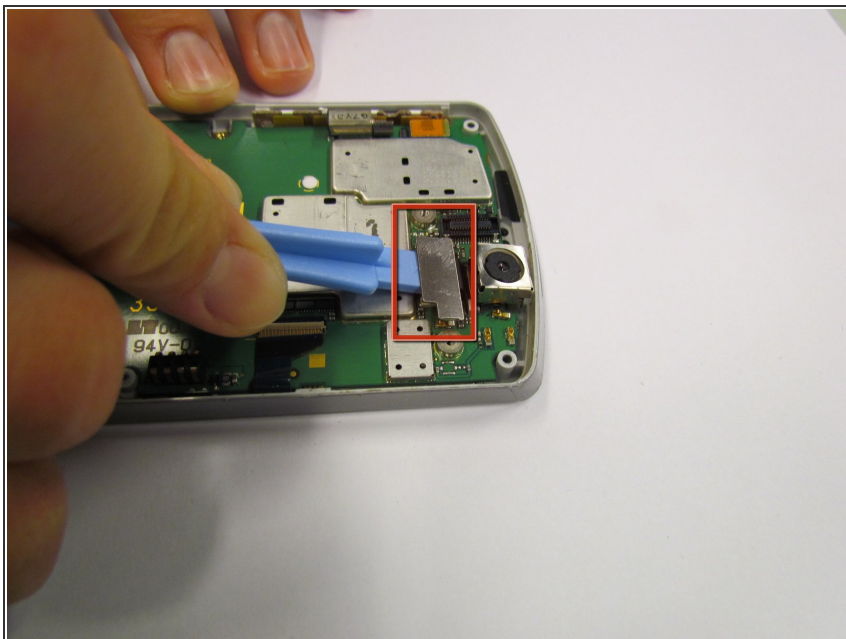
- Remove both screws on the mounted surface with a T5 screwdriver.

Step 8



- Remove the glued, mounted surface by lifting it from underneath the SIM card slot by using the plastic opening tool.

Step 9



- Use the plastic opening tool to lift the camera from the phone.

Step 10



- The new camera can now be attached to the motherboard.

To reassemble your device, follow these instructions in reverse order.