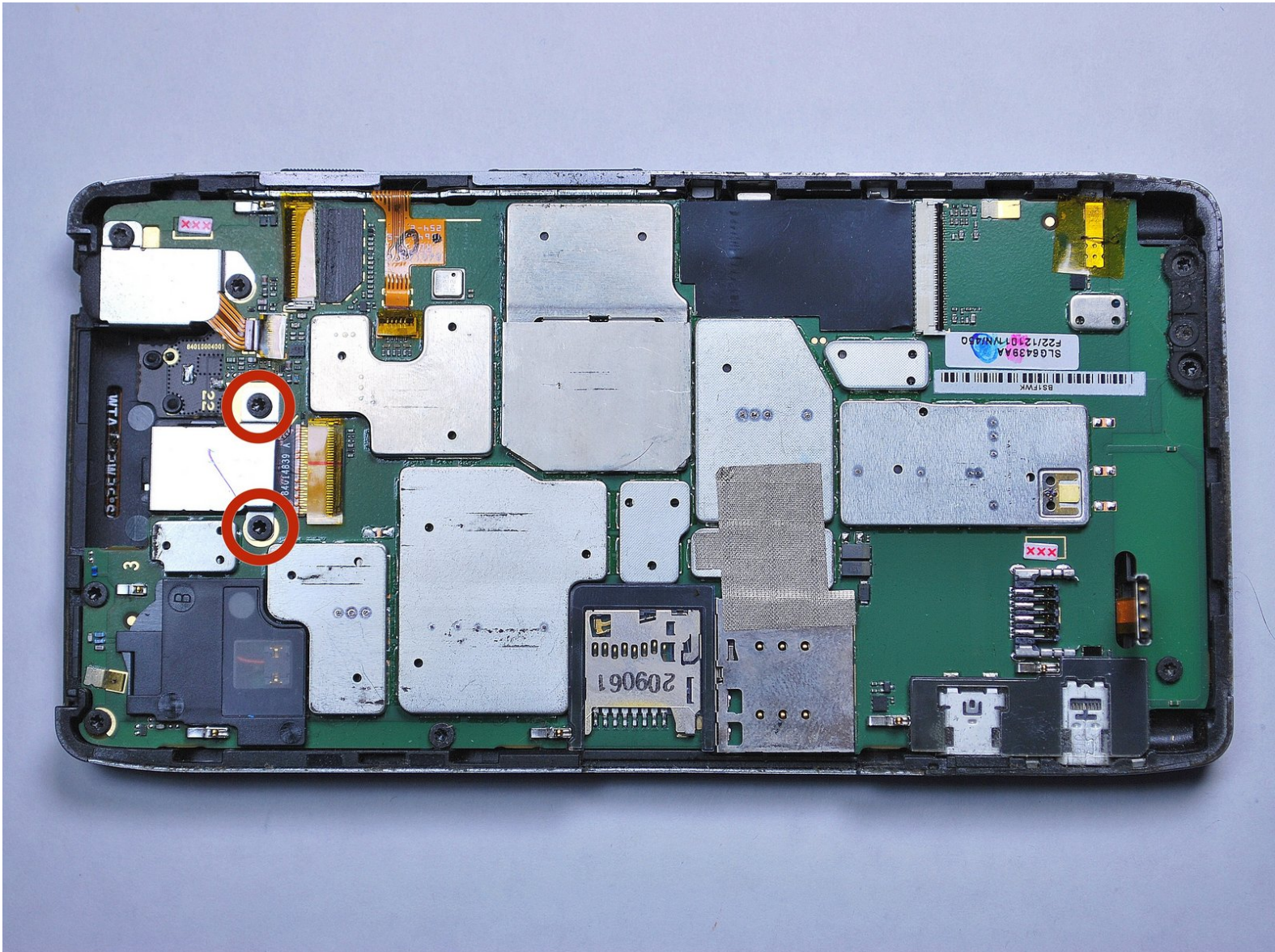




Motorola RAZR Maxx HD Rear-Facing Camera Replacement

If the Motorola RAZR Maxx HD back-facing camera is broken or faulty, replace it using this guide.

Written By: Hristo



INTRODUCTION

Removal of the motherboard is necessary to access the rear facing camera. This guide involves the removal of various screws and parts so make sure you are in a clean and organized environment to avoid the loss of any components.

TOOLS:

- [Paper Clip](#) (1)
 - [Spudger](#) (1)
 - [T5 Torx Screwdriver](#) (1)
 - [Tweezers](#) (1)
-

Step 1 — Screen Removal



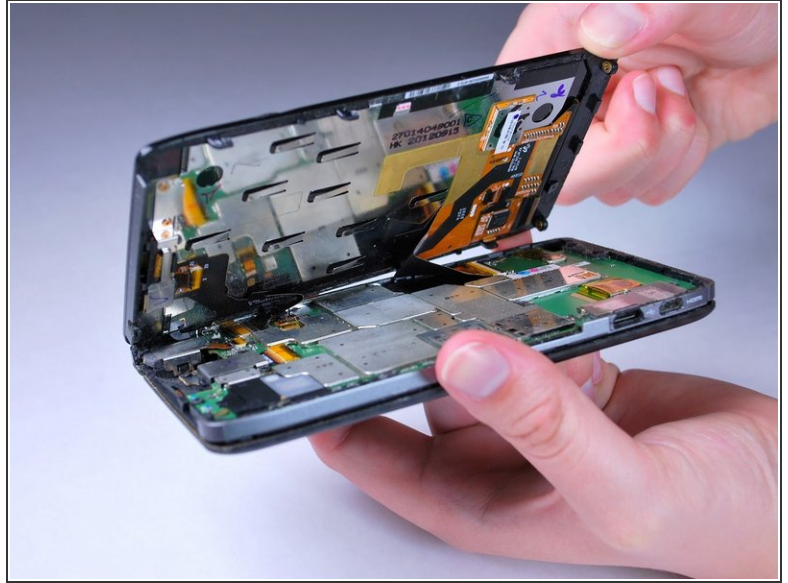
- Use the Torx T5 Screwdriver to remove two 5.0 mm screws at the bottom of the phone.

Step 2




- To remove the SIM card, use an unfolded paperclip to press down on the metal plate on the left side of the phone until it pops up.

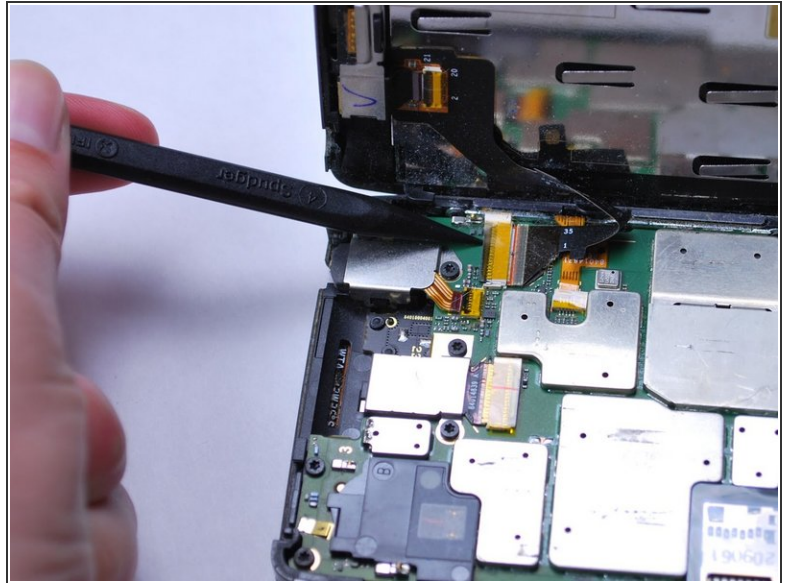
Step 3



- Gently push the screen toward the top edge of the phone and tilt the screen to reveal the black flex cables.

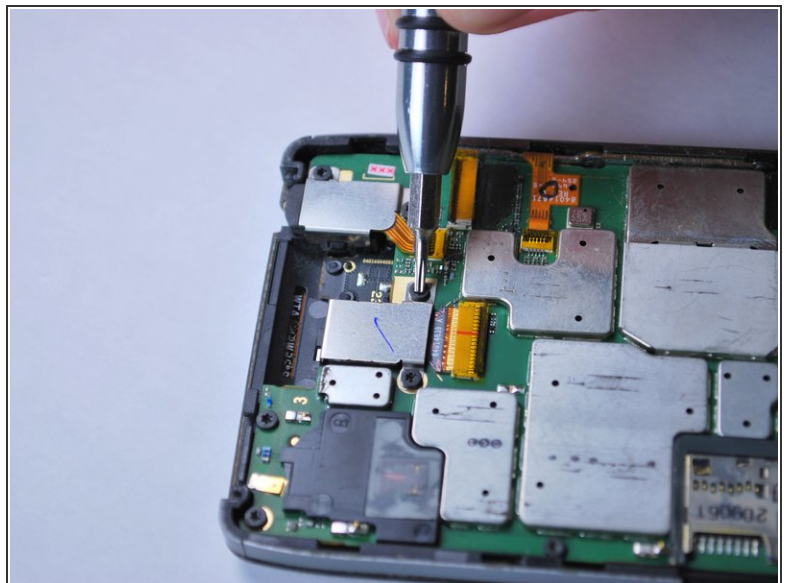
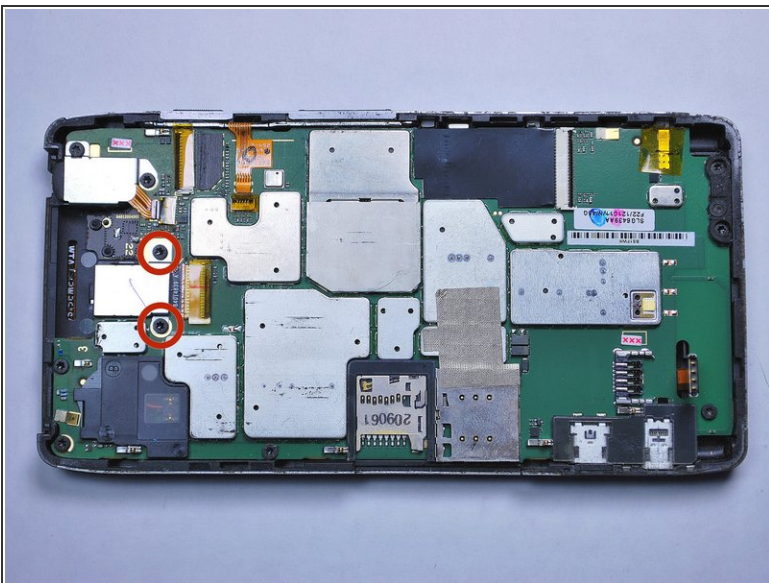
 Do NOT remove the screen all the way or the flex cables will be damaged.

Step 4



- Release the two black ribbon flex cables by gently pulling up on the connection using the spudger. Then lift the screen to remove.
 - ⚠ Make sure to remove the flex cables before completely removing the screen.
- ⓘ When reassembling, align the white bands on the edge of the screen so that a connection is made.

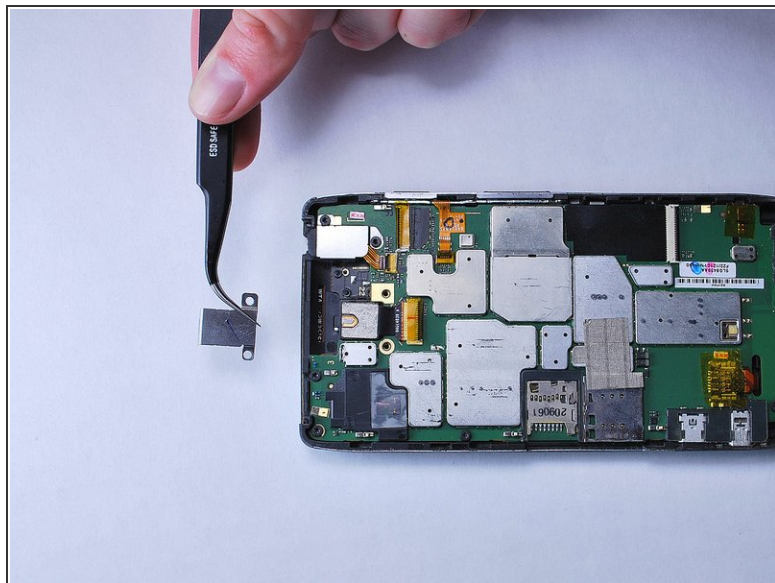
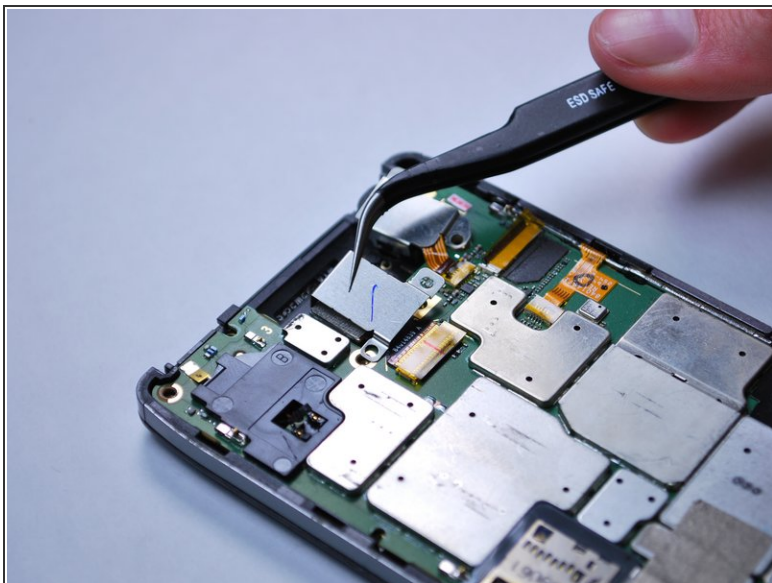
Step 5 — Rear-Facing Camera



- Using a T5 Torx screwdriver, unscrew the two 4.0mm screws on the rear-facing camera cover.

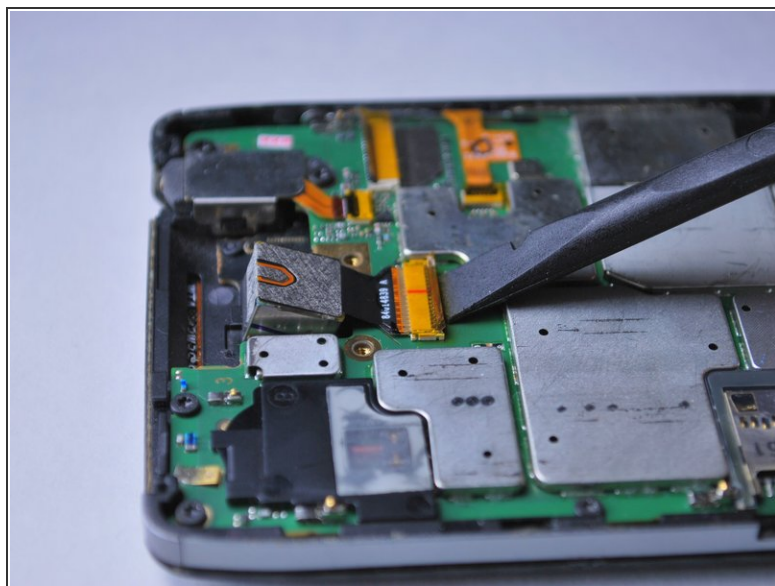
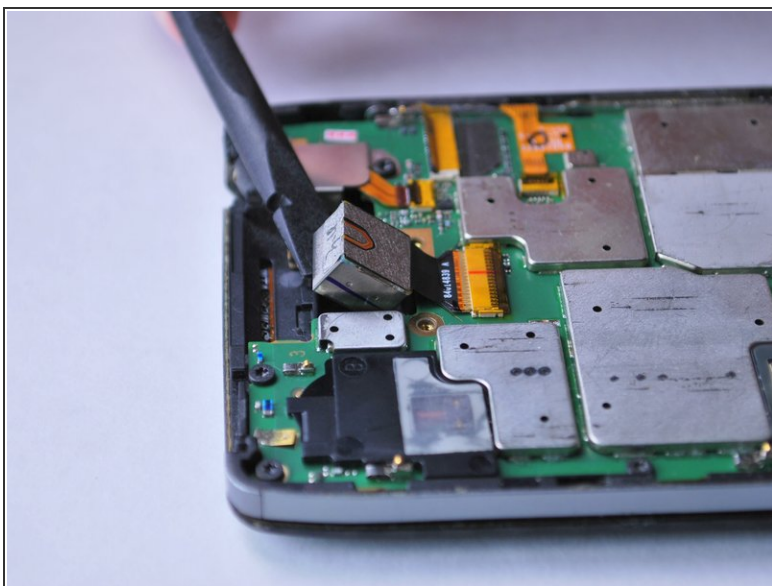
This document was generated on 2019-09-25 08:33:01 AM (MST).

Step 6



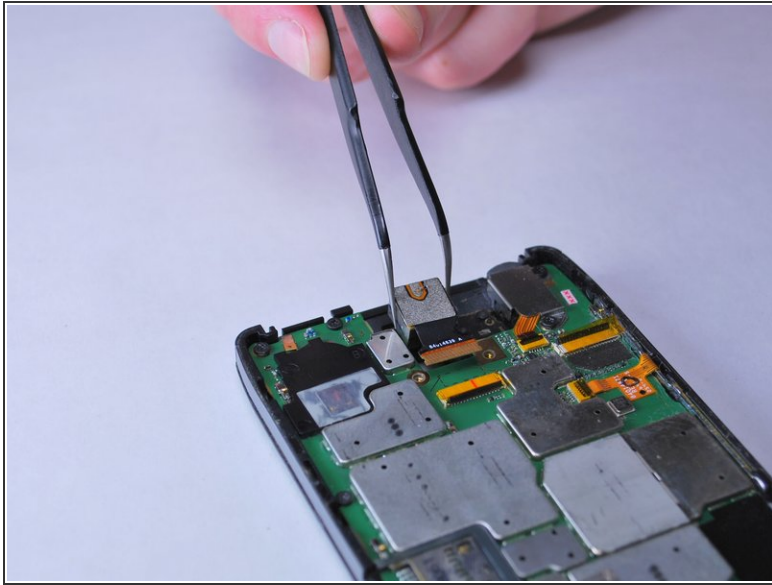
- Use tweezers to remove the rear-facing camera cover.

Step 7



- Use the spudger to gently lift the rear-facing camera until it is detached from the back cover.
- Release the yellow ribbon cable by lifting up on the connection to the motherboard with the spudger.

Step 8



- Use tweezers to gently remove the rear-facing camera by lifting it up off of the motherboard.

To reassemble your device, follow these instructions in reverse order.