



Motorola RAZR2 v9m SD Card Replacement

Replace a broken RAZR2 v9m SD card.

Written By: John T Roller



INTRODUCTION

Use this repair guide to replace an SD card in a Motorola RAZR2 v9m.

Step 1 — Battery



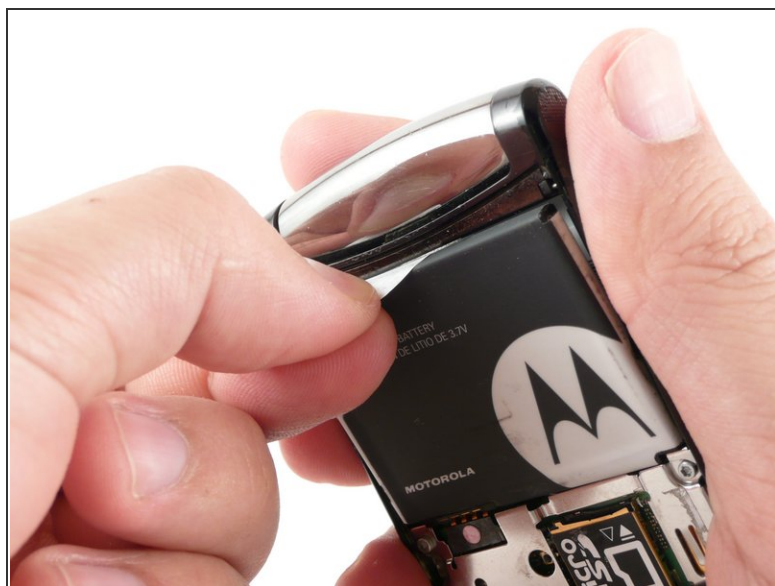
- Push the rear cover toward the hinge of the RAZR2. The panel will slide about 3 mm.

Step 2



- Pinch the top and bottom edges of the panel and pull it away from the RAZR2.
- ⓘ The rear panel uses four small hooks to hold it in place. If the panel will not easily pull away, slide the panel more toward the hinge.

Step 3



- Gently pull the white plastic tab to lift the battery away from the RAZR2.
- ⓘ The white plastic tab is attached to the phone. Only pull it enough to expose the edges of the battery.

Step 4



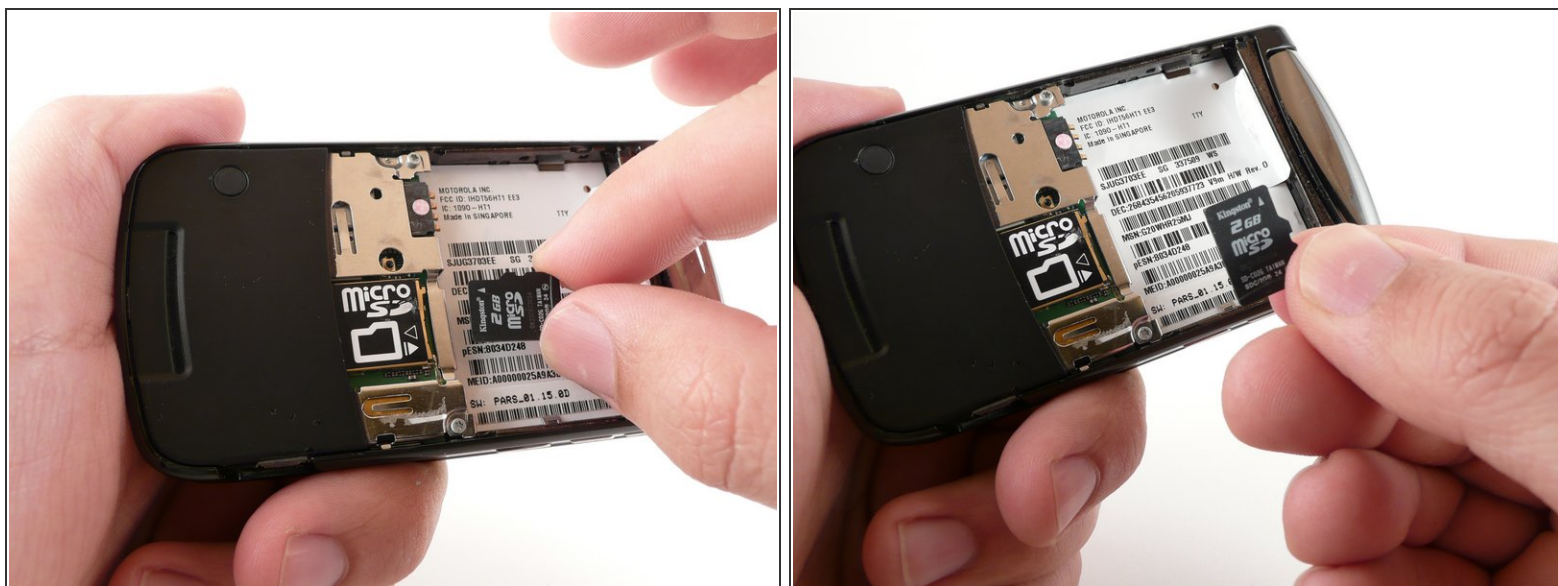
- To remove the battery, grasp its edges pull away from the phone.
- ❗ When installing a new battery, be sure the metal contacts on the phone line up with the ones on the battery.

Step 5 — SD Card



- Press the exposed portion of the SD card towards the bottom of the phone until you hear a click. The SD card will slide into the phone about 10 mm.

Step 6



- Release the SD card. A spring will push it partially out of the phone.
 - Grasp the card by the edges and remove.
- i** When installing a new SD card, remember that it must be 2 GB or less.

To reassemble your device, follow these instructions in reverse order.