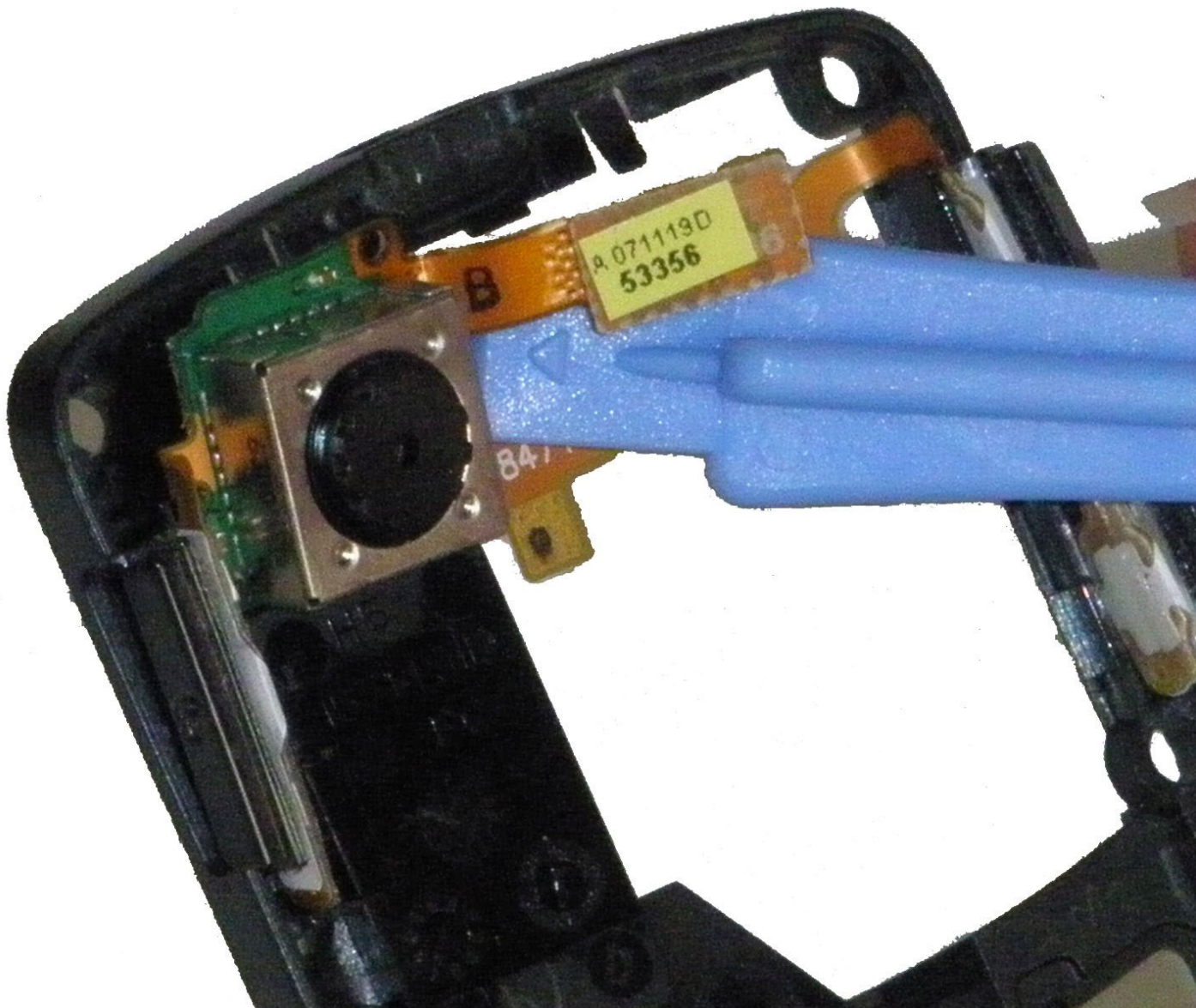




# Motorola RIZR Z3 Camera Replacement

How to replace the camera in the Motorola RIZR Z3.

Written By: Andrew Vu



---

# INTRODUCTION

Guide to installing a new camera.



## TOOLS:

- [iFixit Opening Tools](#) (1)
  - [T4 Torx Screwdriver](#) (1)
-

## Step 1 — Battery



- Press the panel release button on the top of the phone and simultaneously pull the rear panel away from the phone.

## Step 2



- Tilt the battery by lifting at the exposed notch.
- Slide the battery out of its casing.



## Step 3 — Motherboard



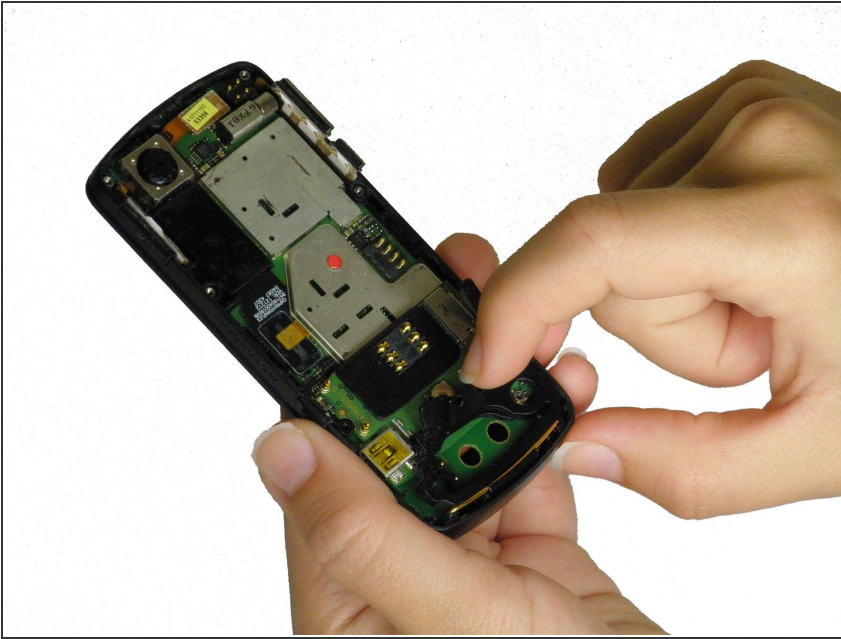
- Use a T4 screwdriver to unscrew all six of the .216 inch screws that attach the housing to the case.

## Step 4



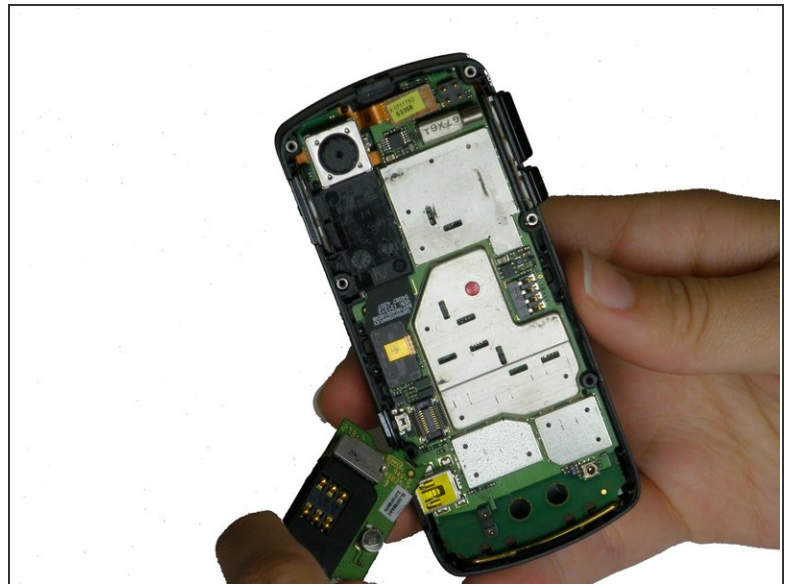
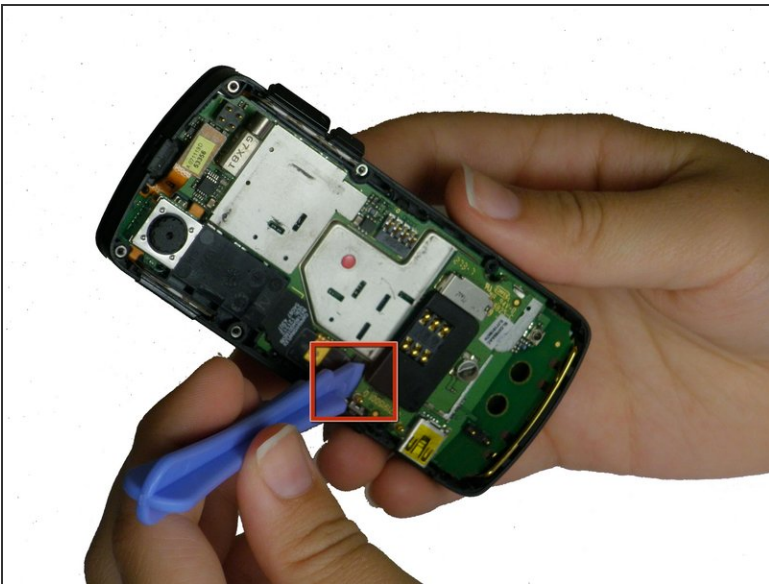
- Use a plastic opening tool to lift the plastic casing.
- Pull the plastic casing directly away from the phone.

## Step 5




- Lift the black rubber loudspeaker housing up and out of the plastic casing.

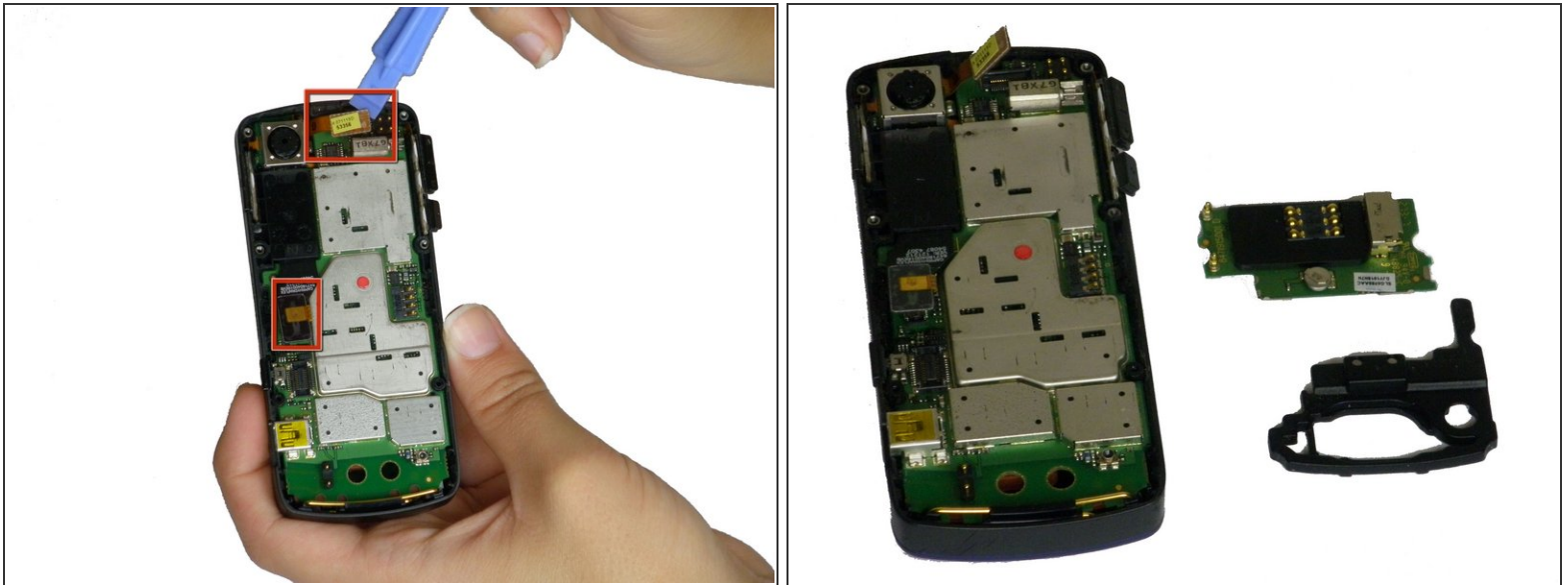
## Step 6



- Use a plastic opening tool to gently lift up the SIM card reader, located above the rubber antenna casing. You should hear a click as it releases.

 **Caution:** Remove carefully, if broken, the phone will not be able to make calls.

## Step 7

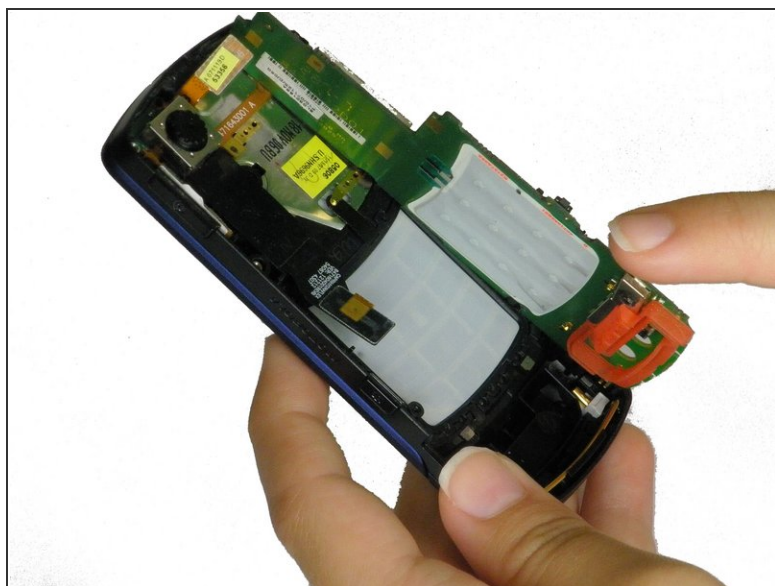
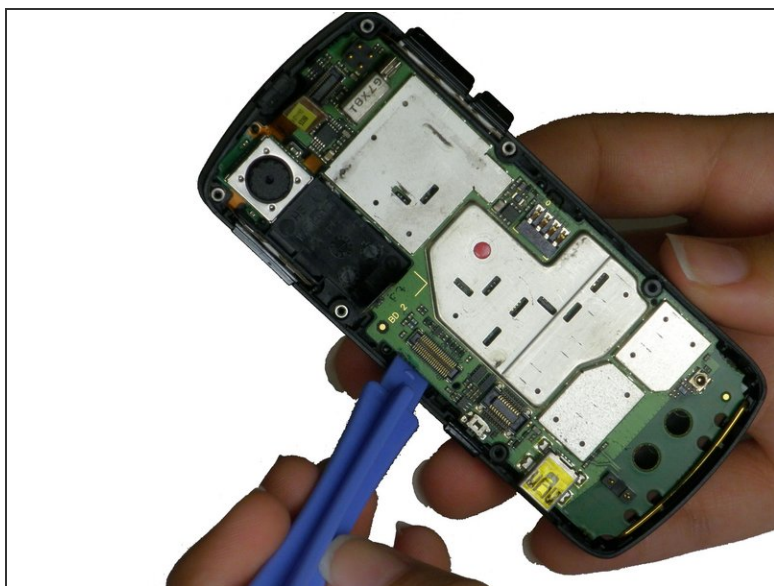


- Use a plastic opening tool to pry the two ribbon cable connectors, unclipping them from their sockets on the motherboard.


⚠ Caution: Remove carefully, if broken, the phone will not function properly.



## Step 8



- Use a plastic opening tool to gently pry the motherboard up until you can tilt it with your fingers. Unhook it from the casing and slowly pull it out.

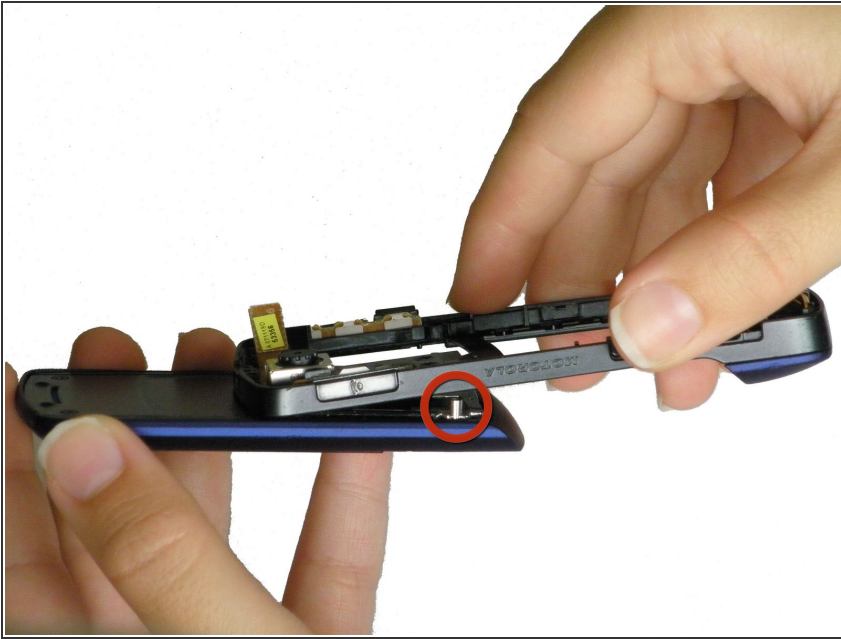
 **Caution:** Do this gently Unclipping too fast may cause damage to your phone.

## Step 9 — Camera



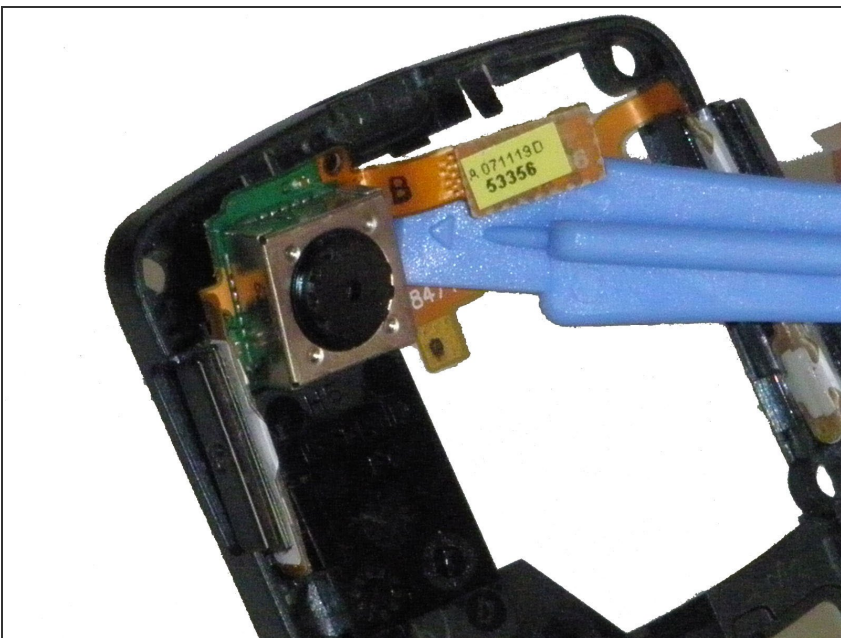
- Turn the phone to the front.
- Push the keypad out through the plastic casing.

## Step 10



- Turn the phone to the side.
- Thread the hinges of the slider through their holes in the casing and pull the slider down and away from the casing.

## Step 11



- Slip the plastic opening tool carefully between the camera and the plastic casing.
- Gently pry the camera unit loose, being mindful of the adhesive that holds it in place and the copper colored ribbons that are attached to it.

To reassemble your device, follow these instructions in reverse order.