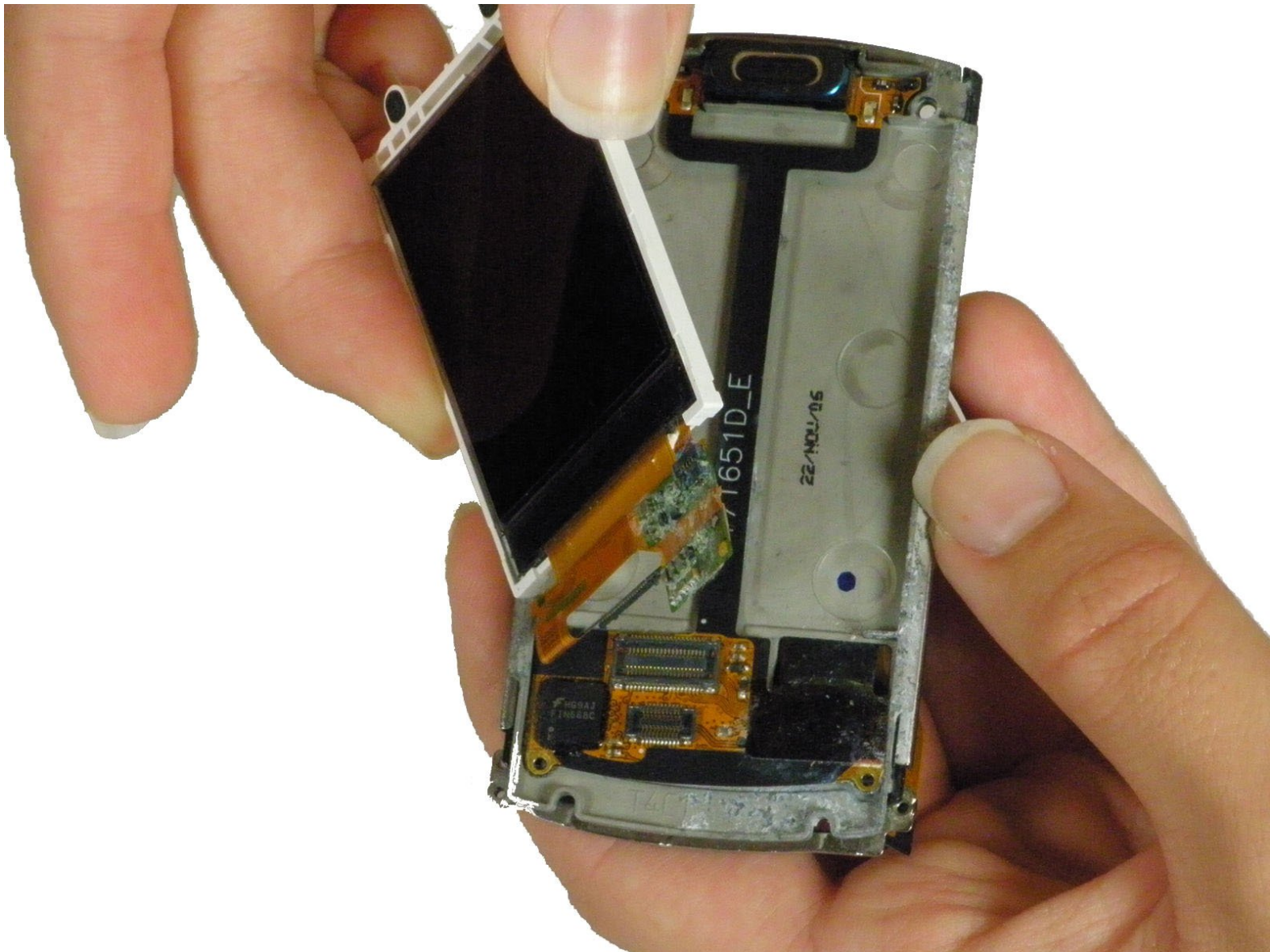




Motorola RIZR Z3 LCD Replacement

How to replace a broken or faulty LCD.

Written By: Brooke Shuford



INTRODUCTION

Guide to replacing a broken LCD.



TOOLS:

- [iFixit Opening Tools](#) (1)
 - [Spudger](#) (1)
 - [T4 Torx Screwdriver](#) (1)
-

Step 1 — Battery



- Press the panel release button on the top of the phone and simultaneously pull the rear panel away from the phone.

Step 2



- Tilt the battery by lifting at the exposed notch.
- Slide the battery out of its casing.

Step 3 — Motherboard



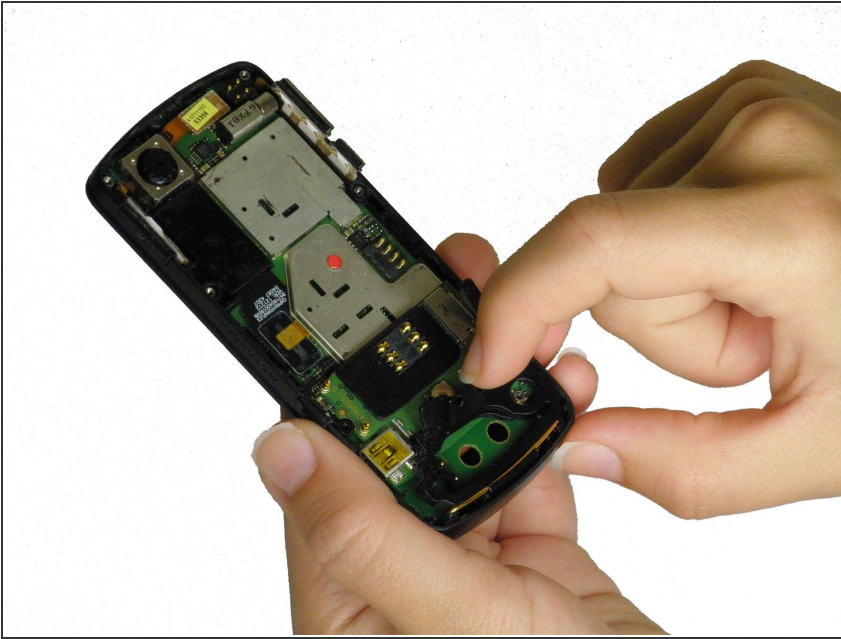
- Use a T4 screwdriver to unscrew all six of the .216 inch screws that attach the housing to the case.

Step 4



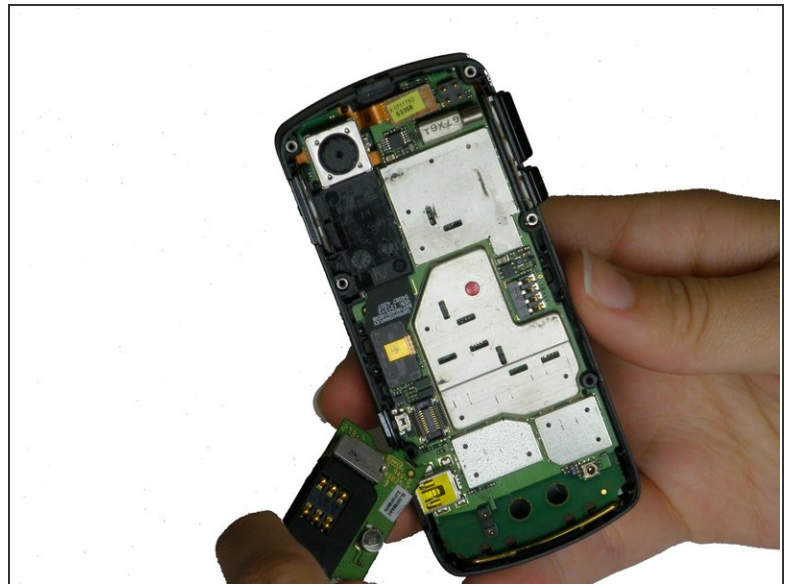
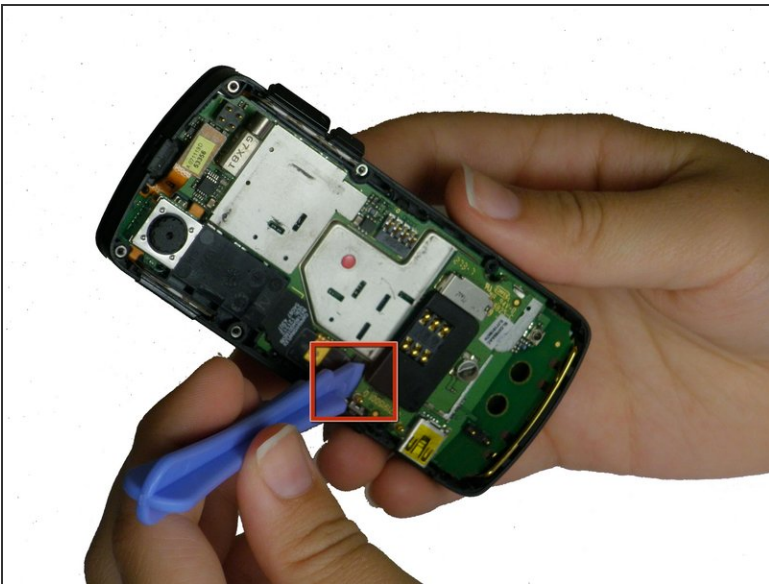
- Use a plastic opening tool to lift the plastic casing.
- Pull the plastic casing directly away from the phone.

Step 5



- Lift the black rubber loudspeaker housing up and out of the plastic casing.

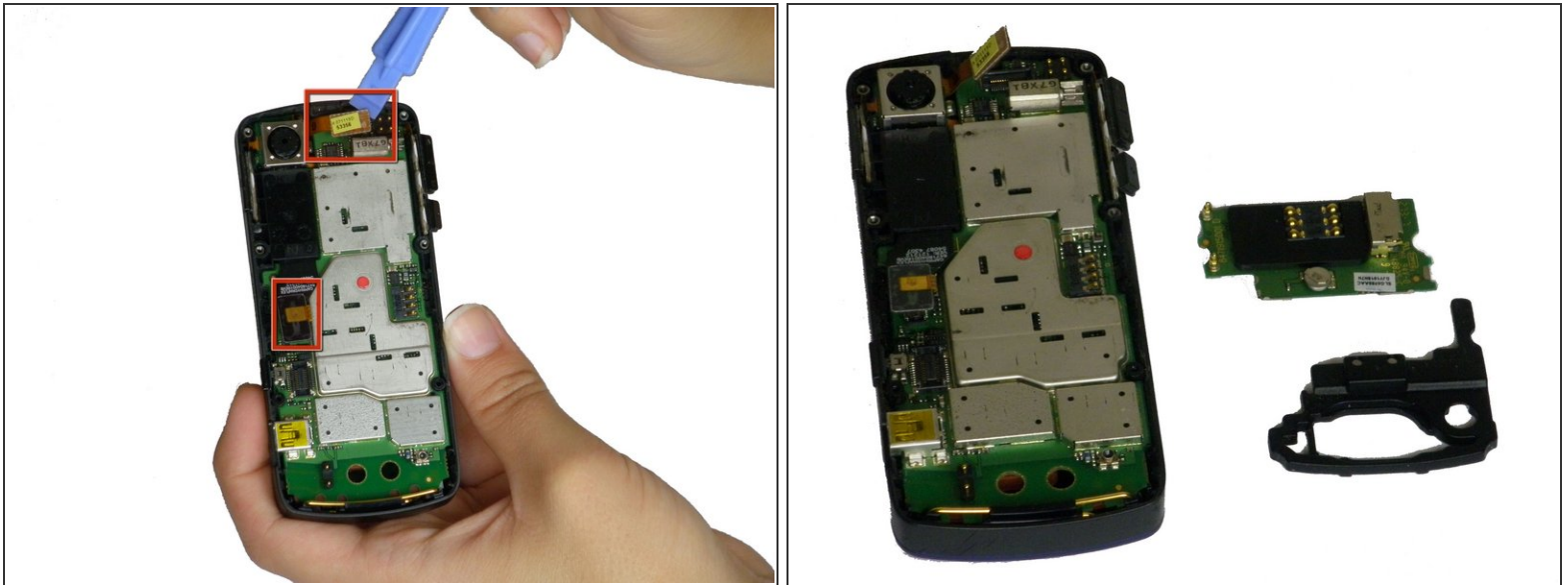
Step 6



- Use a plastic opening tool to gently lift up the SIM card reader, located above the rubber antenna casing. You should hear a click as it releases.

⚠ Caution: Remove carefully, if broken, the phone will not be able to make calls.

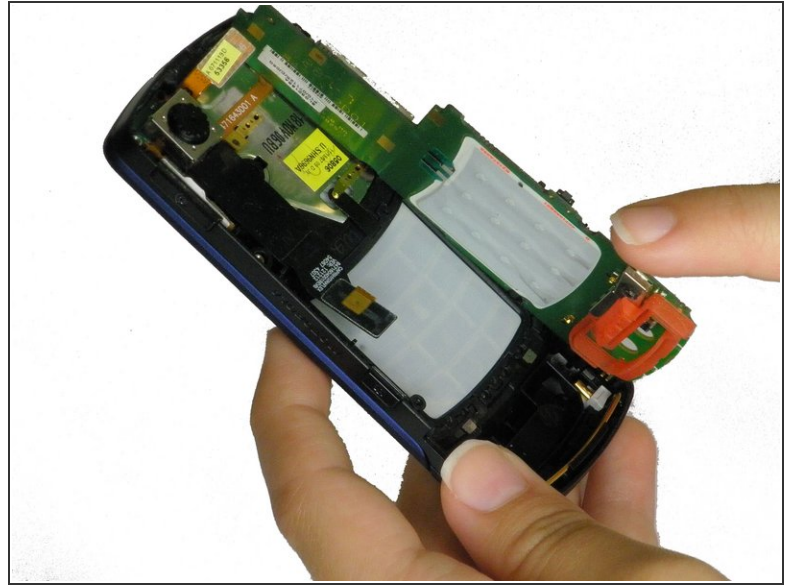
Step 7




- Use a plastic opening tool to pry the two ribbon cable connectors, unclipping them from their sockets on the motherboard.

⚠ Caution: Remove carefully, if broken, the phone will not function properly.

Step 8



- Use a plastic opening tool to gently pry the motherboard up until you can tilt it with your fingers. Unhook it from the casing and slowly pull it out.

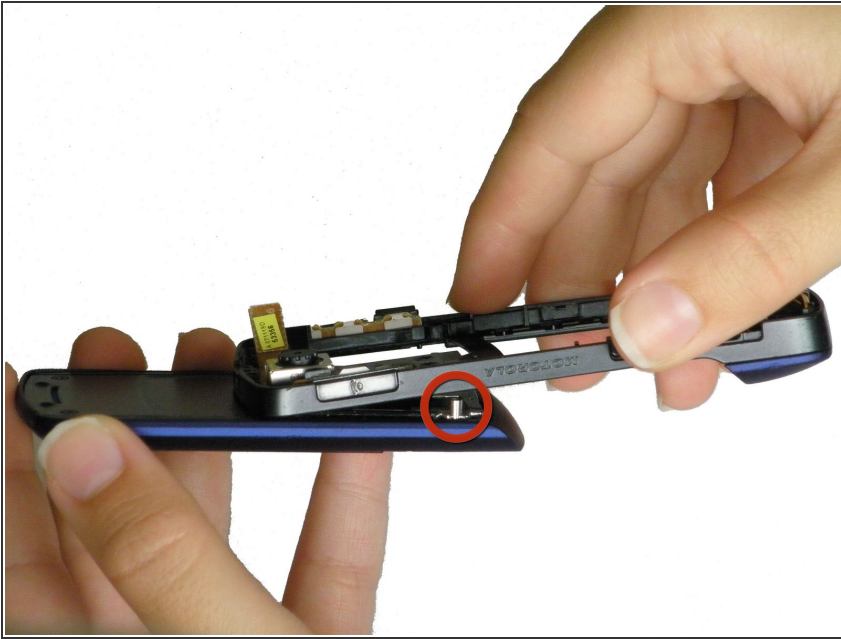
 **Caution:** Do this gently. Unclipping too fast may cause damage to your phone.

Step 9 — LCD



- Turn the phone to the front.
- Push the keypad out through the plastic casing.

Step 10



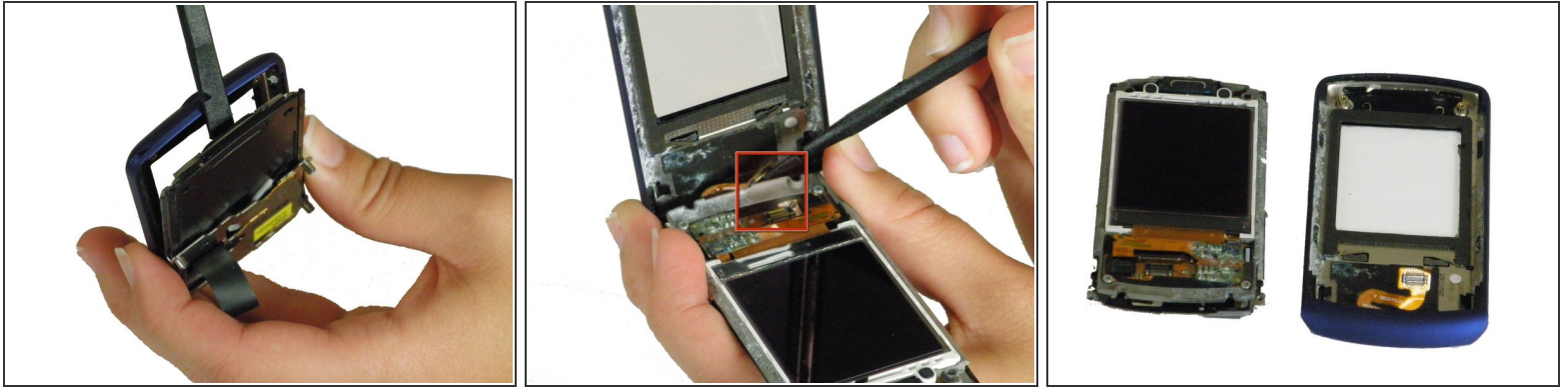
- Turn the phone to the side.
- Thread the hinges of the slider through their holes in the casing and pull the slider down and away from the casing.

Step 11



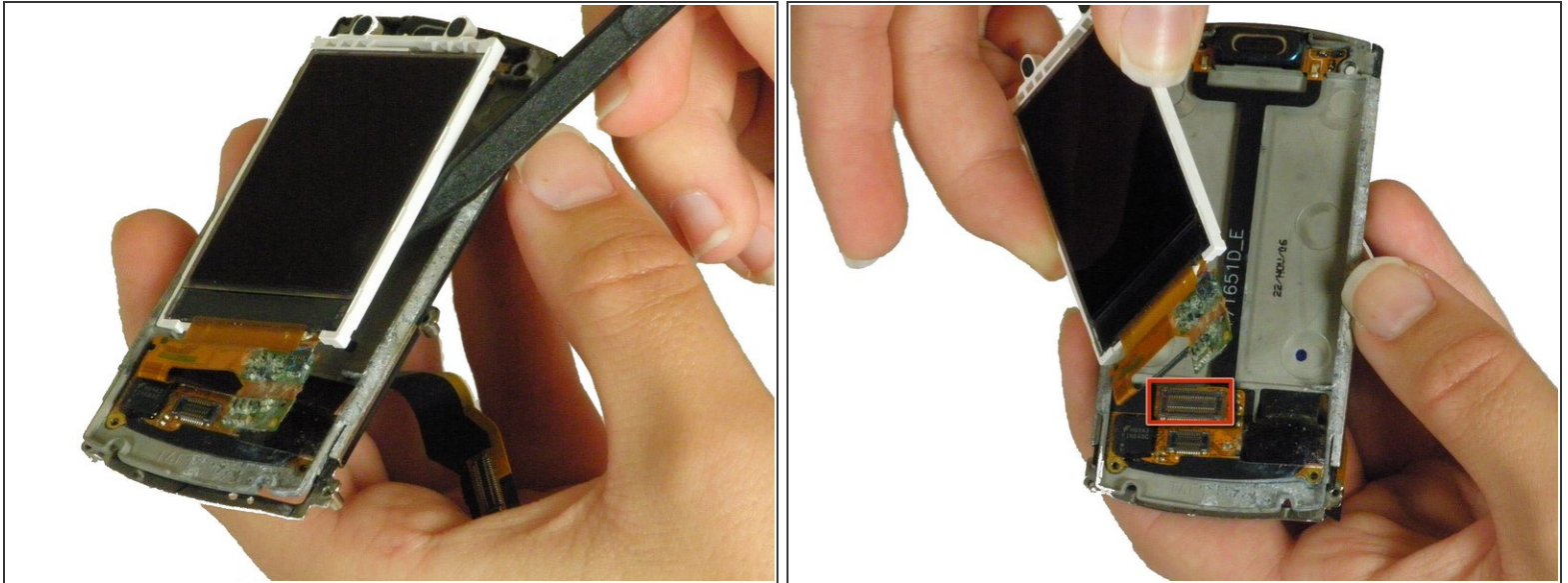
- Use a T4 screwdriver to unscrew the two .15 inch screws holding the LCD to the faceplate.

Step 12



- Use a spudger to pry the plastic screen casing partially up from the LCD unit.
 - Use the spudger to pry the ribbon cable away from its clip on the LCD unit.
- ⚠ Caution: Do this carefully, damage to this ribbon cable will cause a blank screen.
- Pull the plastic screen casing directly away from the LCD unit.

Step 13



- Use a spudger to lift the LCD partially away from the metal casing.
 - Use the spudger to pry the ribbon cable directly up from its clip on the metal casing.
- ⚠ Caution: Damage to the ribbon cable here will cause screen damage.
- Pull the LCD completely away from the metal casing.

To reassemble your device, follow these instructions in reverse order.