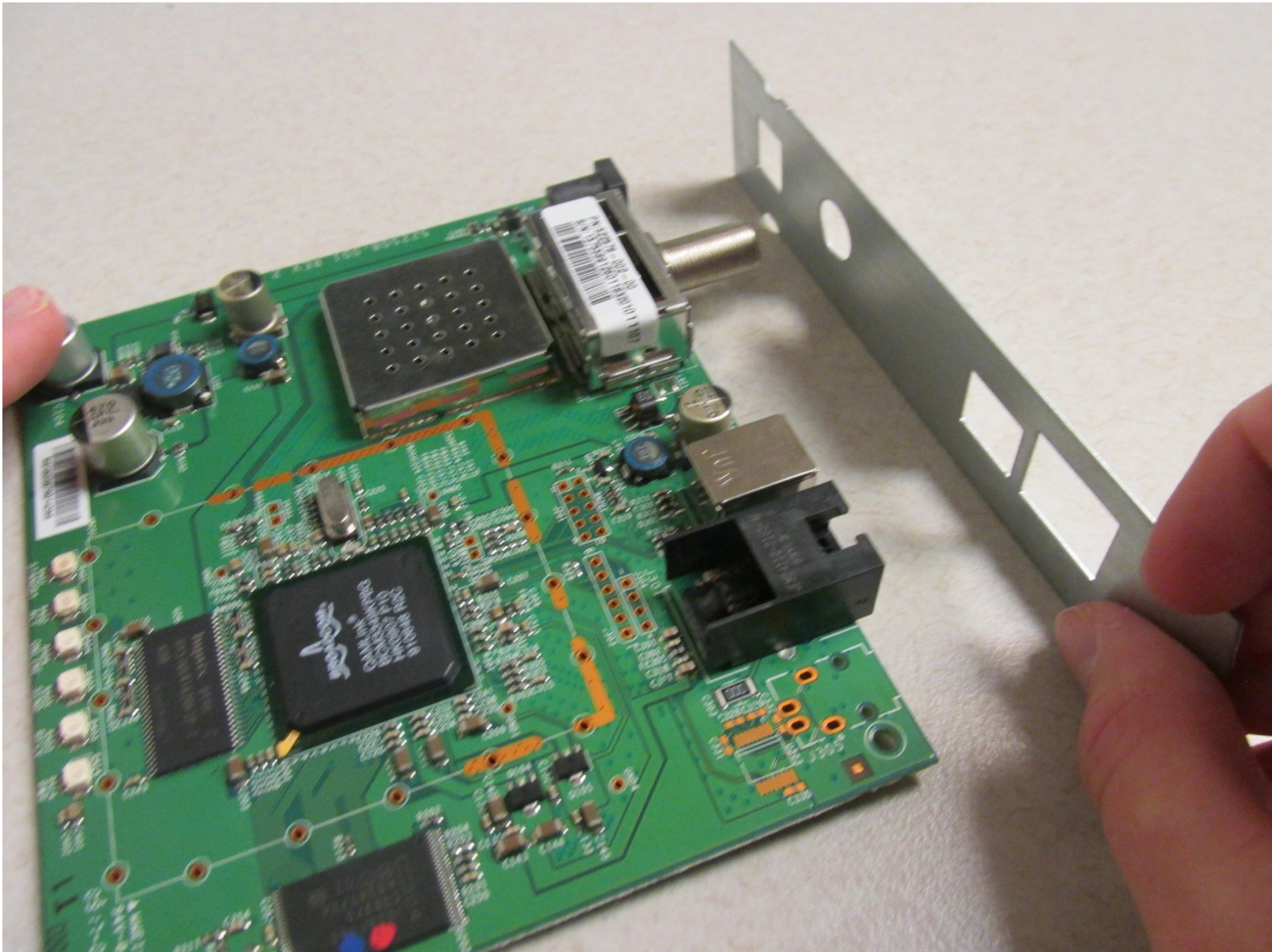




Motorola SURFboard SB5101 Face Plate Replacement

Use this guide to remove the silver plate on the back of the modem.

Written By: Cayce Rast



INTRODUCTION

The silver face plate is attached to the back side of the motherboard and gives stability to the port connections on the back of the device. It may need to be removed to access the port connections, or to replace the face plate itself if it has become damaged.



TOOLS:

- [64 Bit Driver Kit](#) (1)
 - [Tweezers](#) (1)
-

Step 1 — Removing the Screw on the Back of the Device



- Locate the single 1 cm screw on the back of the device (enclosed by a red circle in the image).
- Using a screwdriver with a Torx 10 hex screw, begin removing the 1cm screw by turning the screwdriver counterclockwise.
- Remove the screw and set aside.

Step 2 — Unlocking Router



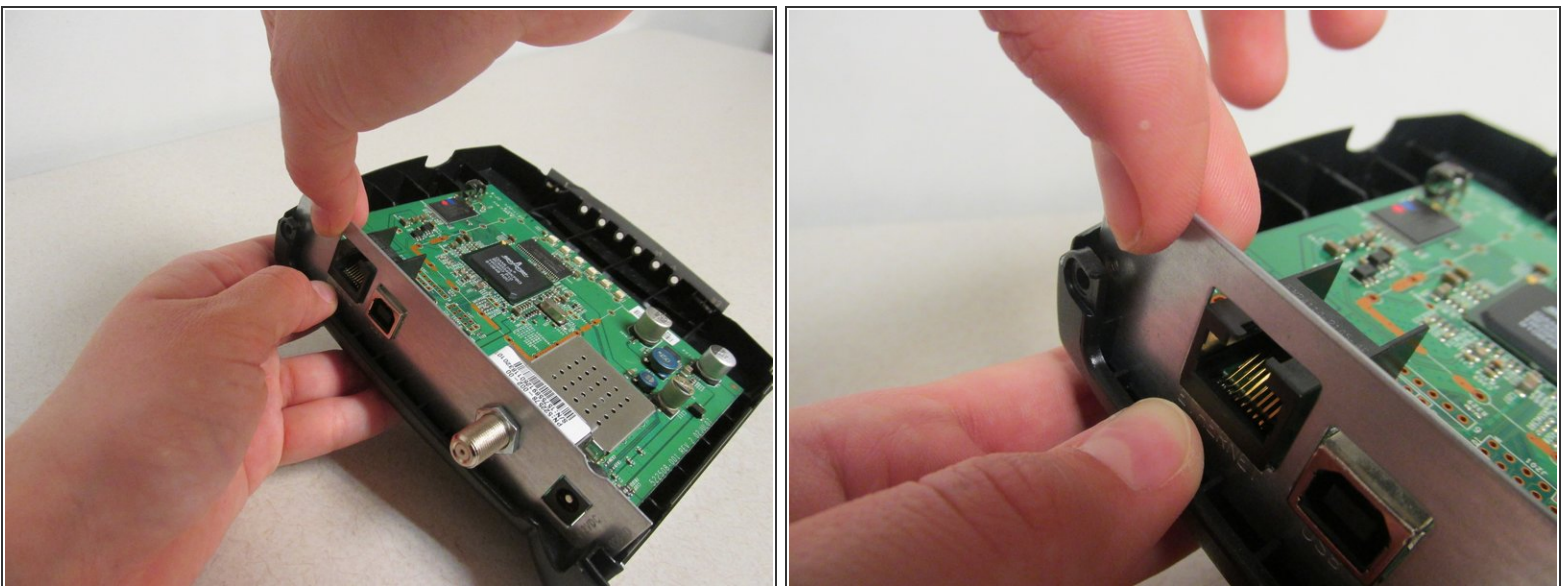
- ⓘ Rotate your device 90 degrees to the right so that the bottom of the device is facing you.
 - Locate the two horizontal slots on the bottom of the device.
- ⓘ You may need to remove the sticker on the bottom of the device to access these slots.
 - Insert the back end of the forceps into one of these slots. You may also use any other flat, narrow tool that fits into the slots.
 - Gently push the forceps into device. You should feel movement or hear a click, signifying this side of the device is unlocked.
 - Repeat with the other slot to completely unlock the device.

Step 3 — Removing the Cover



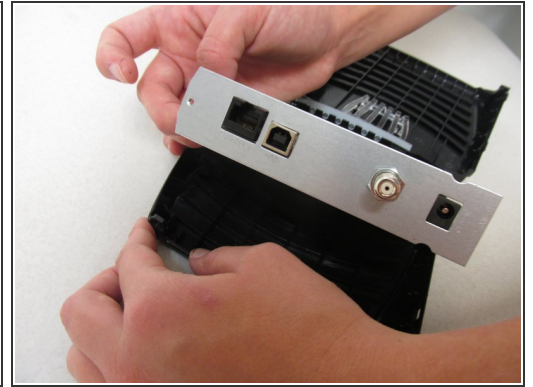
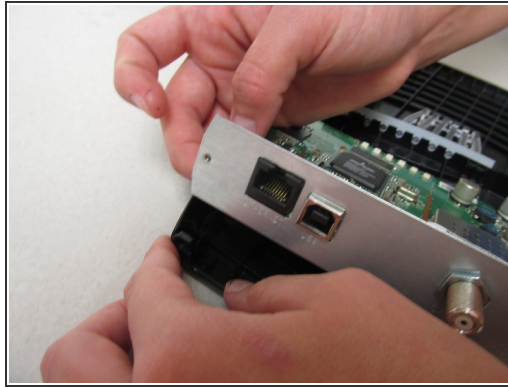
- Grab the top and the bottom of the device and gently pull the device open.
- Continue pulling until you have completely removed the top cover of the device.
- ☑ When reassembling your device, make sure the standby key is properly in place. See the [Standby Key Guide](#) for more information.
- ☑ Also ensure that when you close the two sides of the cover the LED indicator lights are inside the information panel.

Step 4 — Grabbing the Motherboard



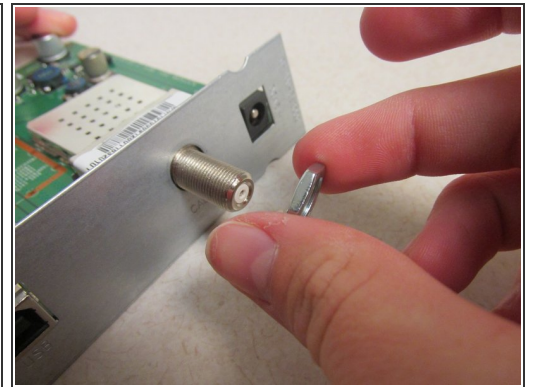
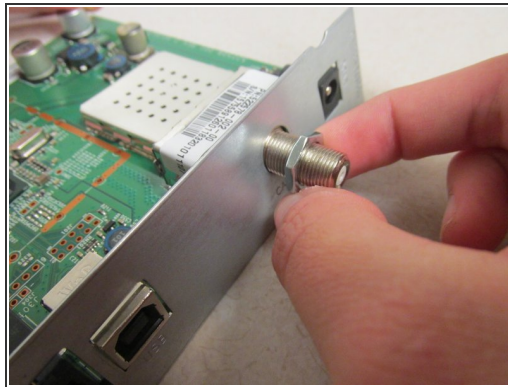
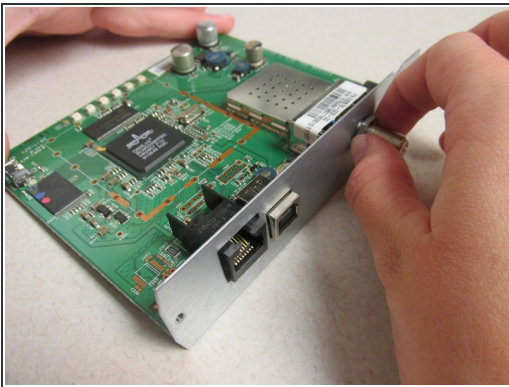
- After opening the router, grab the upper left corner of the sliver face plate and gently pull the motherboard out of the slot from within the case.

Step 5 — Removing the Motherboard



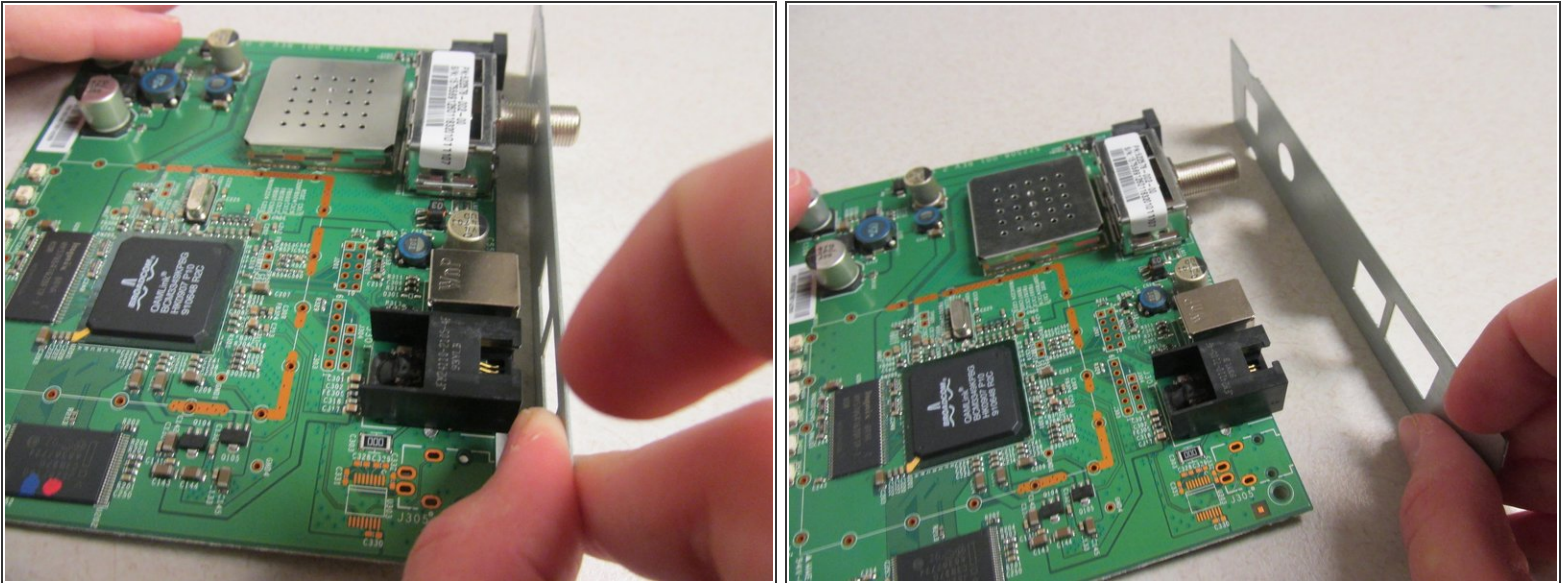
- Slowly lift the motherboard out of the case.

Step 6 — Unscrew the Silver Antennae Jack Screw



- Begin by grabbing the washer on the silver antennae jack screw.
- Start unscrewing the washer by turning it counterclockwise.
- Continue to unscrew the washer until it comes off the screw.
- ⓘ If you cannot unscrew the washer with your finger, you may need to use a small wrench to grab the washer.
- Set the washer aside.

Step 7 — Removing the Face Plate



- Grab both corner ends of the silver face plate.
- Gently pull the face plate away from the router, gently wiggling it off the screw.

Follow these directions in reverse order to replace a new face plate, or put the same faceplate back in place after you have finished working on the electrical components underneath.