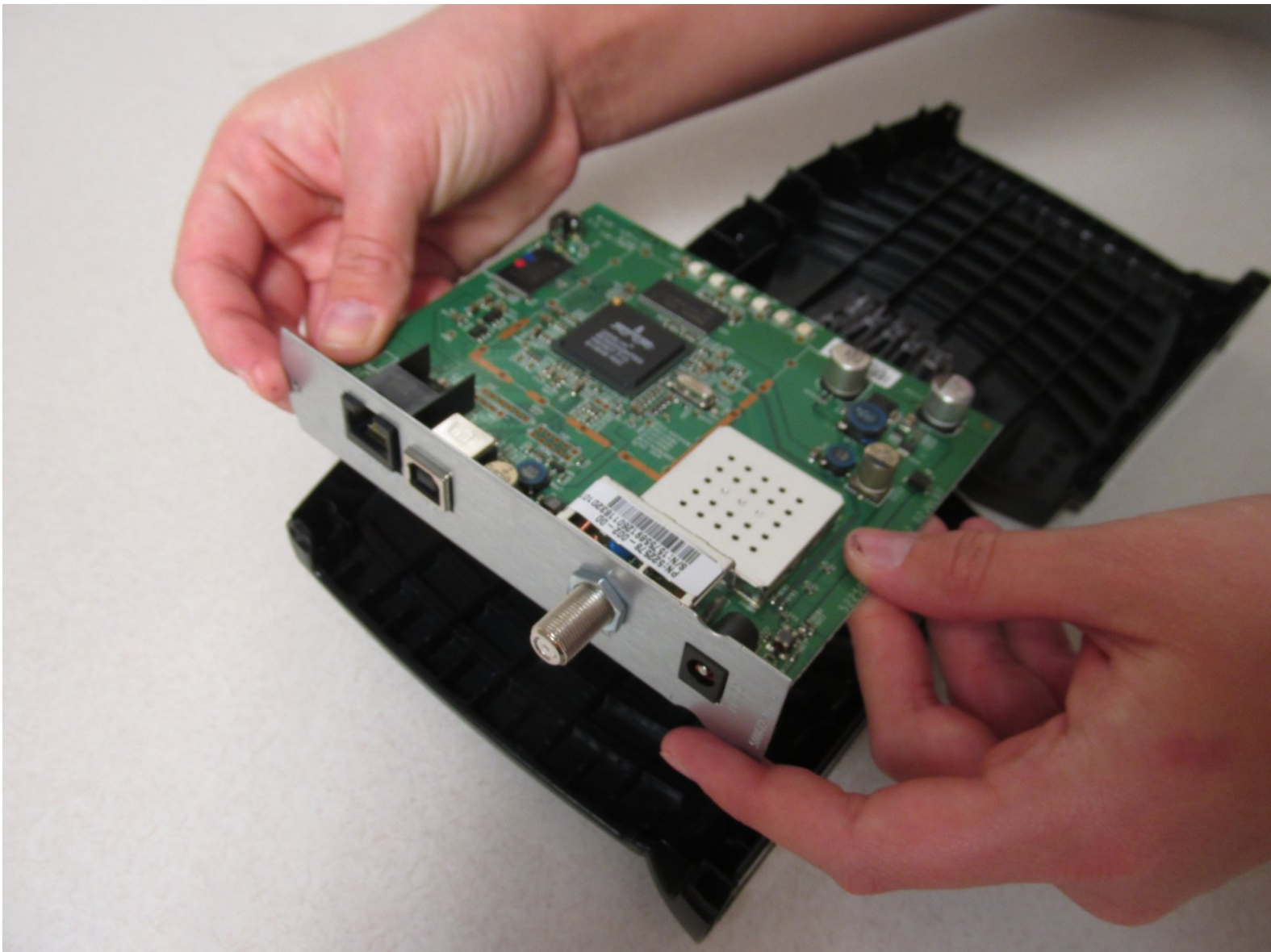




Motorola SURFboard SB5101 Motherboard Replacement

Use this guide in order to learn where the motherboard attaches to the router and how to separate the two components.

Written By: Cayce Rast



INTRODUCTION

Removing the motherboard is necessary if the motherboard itself or components of the motherboard need to be accessed or replaced.



TOOLS:

- [64 Bit Driver Kit](#) (1)
 - [Tweezers](#) (1)
-

Step 1 — Removing the Screw on the Back of the Device



- Locate the single 1 cm screw on the back of the device (enclosed by a red circle in the image).
- Using a screwdriver with a Torx 10 hex screw, begin removing the 1cm screw by turning the screwdriver counterclockwise.
- Remove the screw and set aside.

Step 2 — Unlocking Router



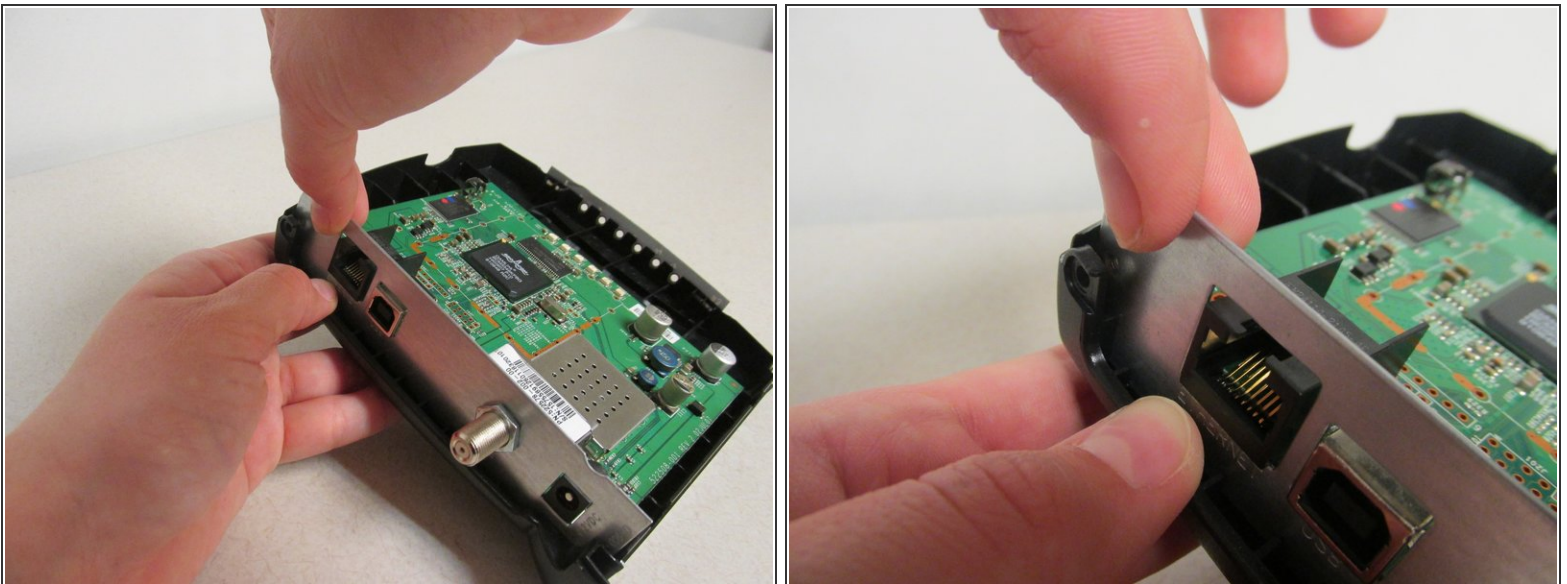
- ⓘ Rotate your device 90 degrees to the right so that the bottom of the device is facing you.
 - Locate the two horizontal slots on the bottom of the device.
- ⓘ You may need to remove the sticker on the bottom of the device to access these slots.
 - Insert the back end of the forceps into one of these slots. You may also use any other flat, narrow tool that fits into the slots.
 - Gently push the forceps into device. You should feel movement or hear a click, signifying this side of the device is unlocked.
 - Repeat with the other slot to completely unlock the device.

Step 3 — Removing the Cover



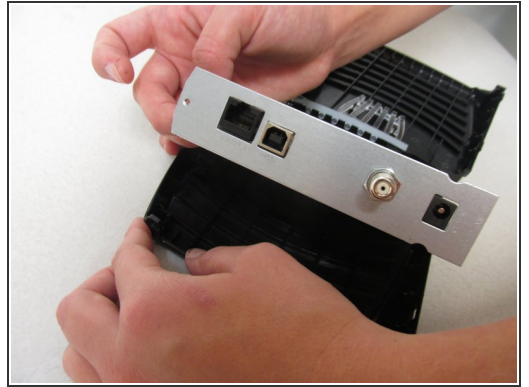
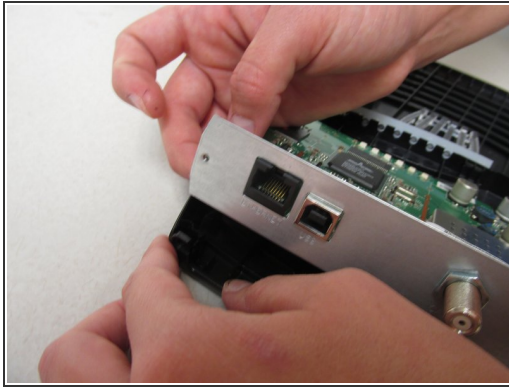
- Grab the top and the bottom of the device and gently pull the device open.
- Continue pulling until you have completely removed the top cover of the device.
- ☑ When reassembling your device, make sure the standby key is properly in place. See the [Standby Key Guide](#) for more information.
- ☑ Also ensure that when you close the two sides of the cover the LED indicator lights are inside the information panel.

Step 4 — Grabbing the Motherboard



- After opening the router, grab the upper left corner of the silver face plate and gently pull the motherboard out of the slot from within the case.

Step 5 — Removing the Motherboard



- Slowly lift the motherboard out of the case.

To replace the motherboard, follow these instructions in reverse order.