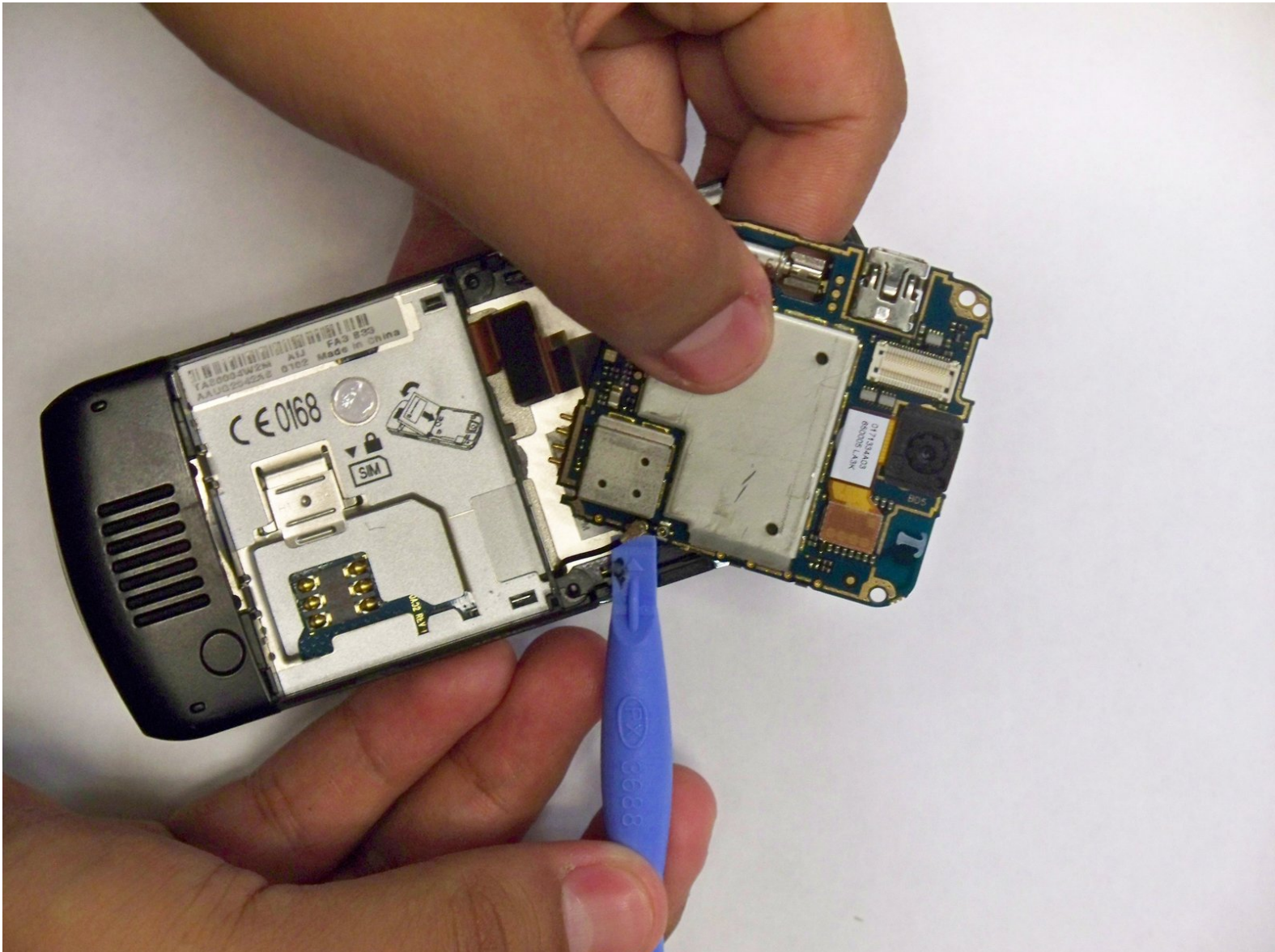




Motorola Slvr L7 Camera Assembly Replacement

Step-by-Step process of Motorola SLVR L7 Camera Assembly

Written By: Jorge Trujillo

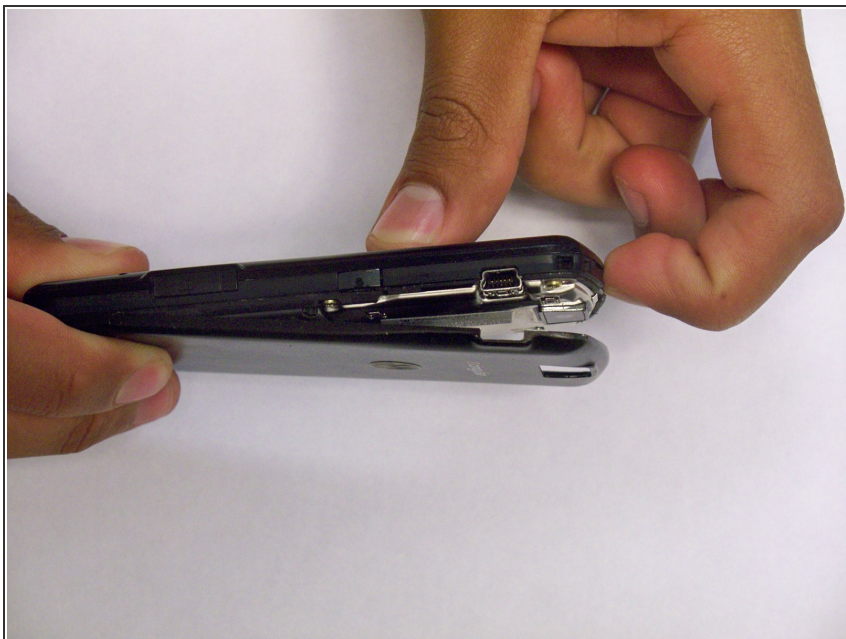




TOOLS:

- [T6 Torx Screwdriver](#) (1)
- [iFixit Opening Tools](#) (1)

Step 1 — Camera Assembly



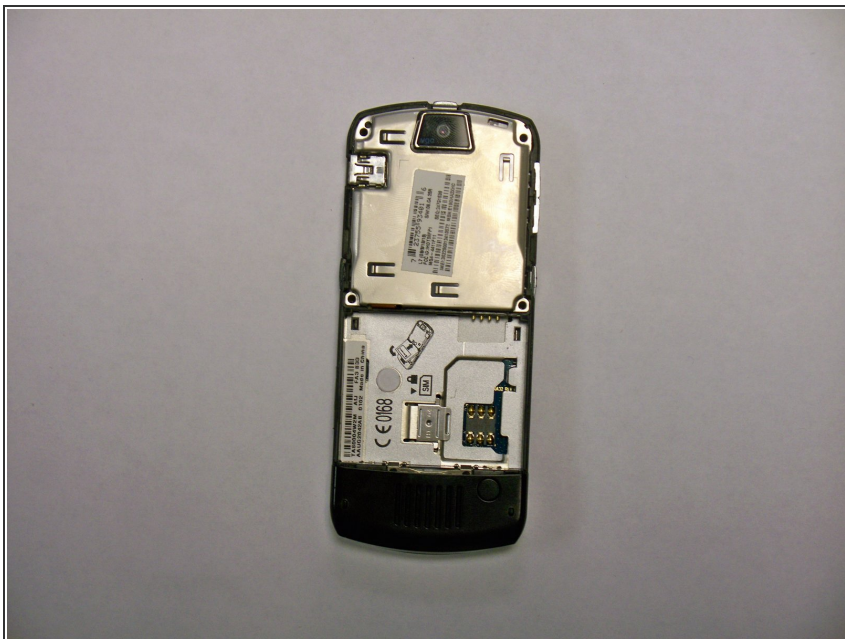
- Push down on the black tab located at the top center of the Motorola phone.

Step 2



- Remove the battery by pulling the battery from the top center.

Step 3



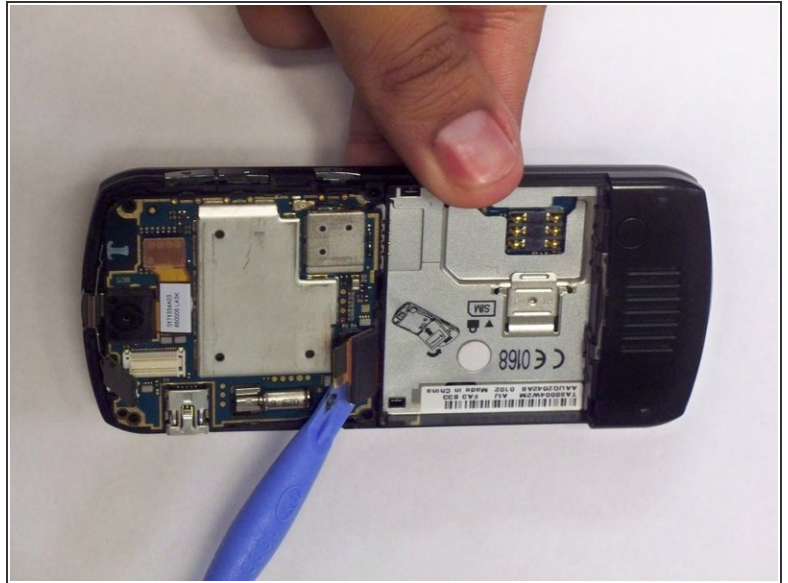
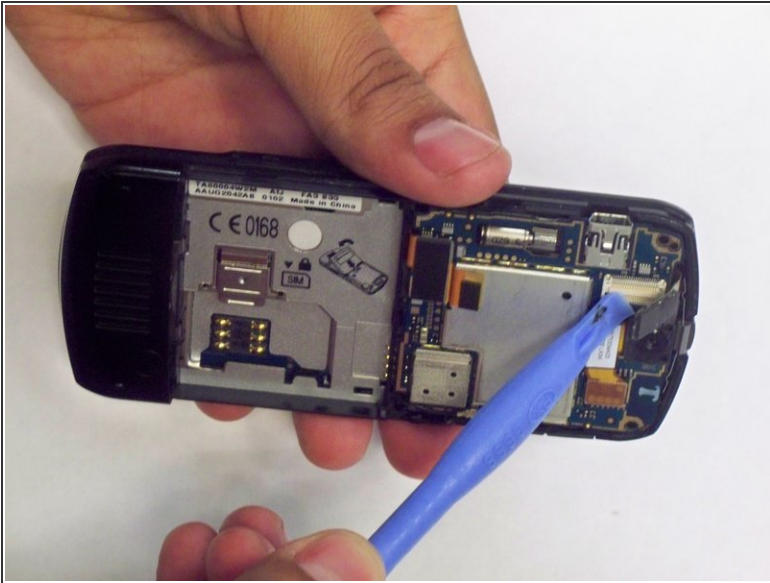
- Remove the four (4) T6 Torx screws from the back of the metal back plate.

Step 4



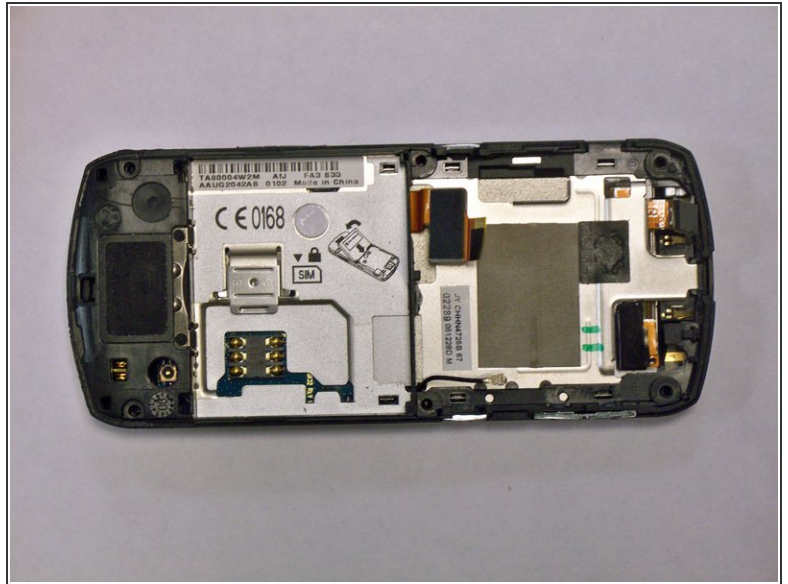
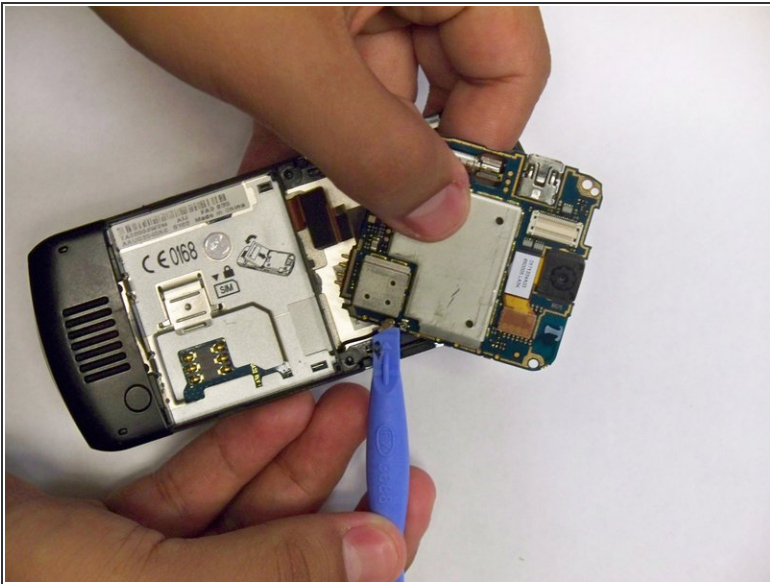
- Insert the flat end of a spudger and pry the metal cover up off the phone.

Step 5



- Carefully, disconnect the two connectors from their sockets on the motherboard using the flat end of a spudger.

Step 6



- Use a spudger to pry the antenna cable connectors from its respective socket on the motherboard.
- De-route the antenna cable by pulling it out.

To reassemble your device, follow these instructions in reverse order.