



Motorola Slvr L7 Front Panel Replacement

Step-by-Step process of installing HTC Front Panel

Written By: Jorge Trujillo

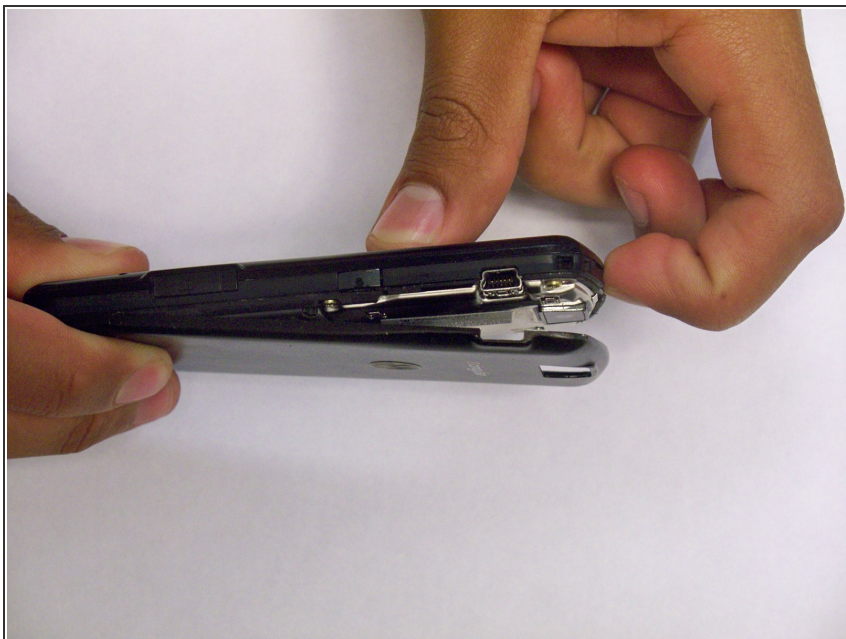




TOOLS:

- [Phillips #00 Screwdriver](#) (1)
- [Spudger](#) (1)
- [T6 Torx Screwdriver](#) (1)

Step 1 — Front Panel



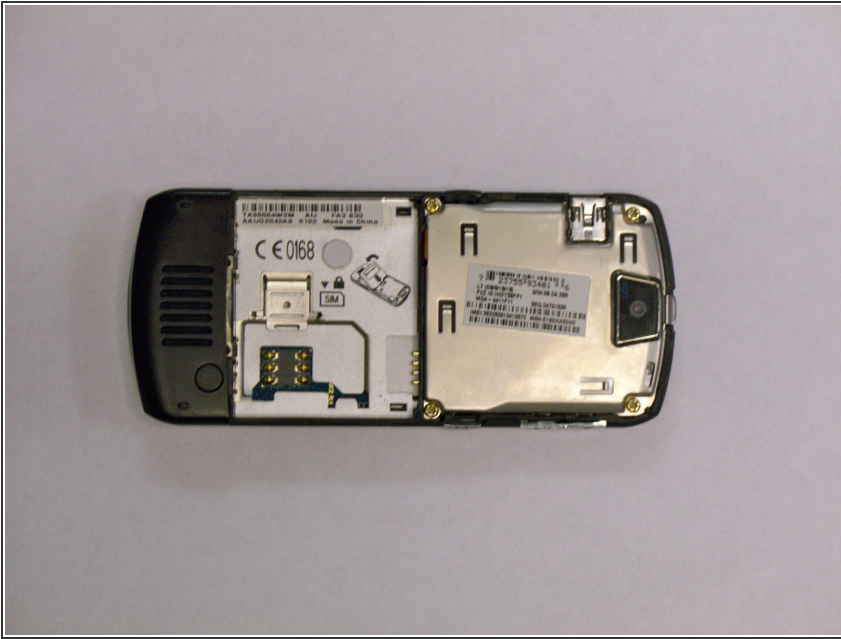
- Push down on the black tab located at the top center of the Motorola phone

Step 2



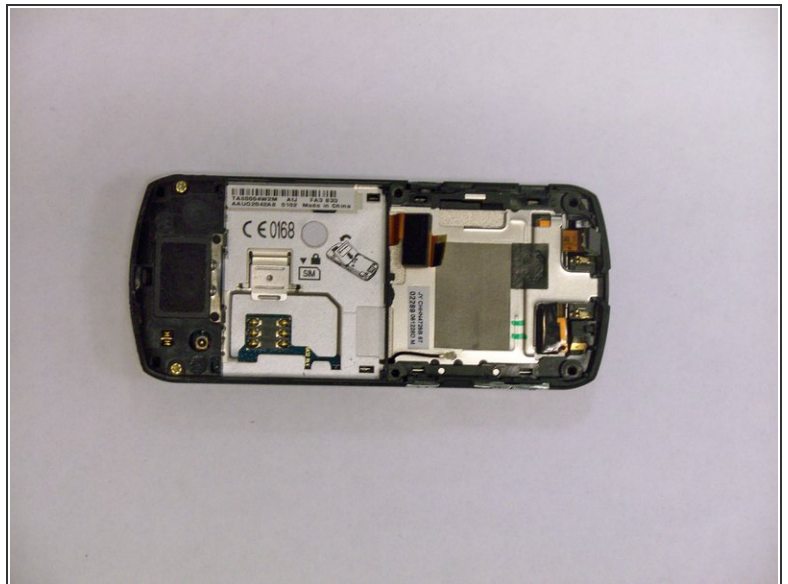
- Remove the battery by pulling the battery from the top center.

Step 3



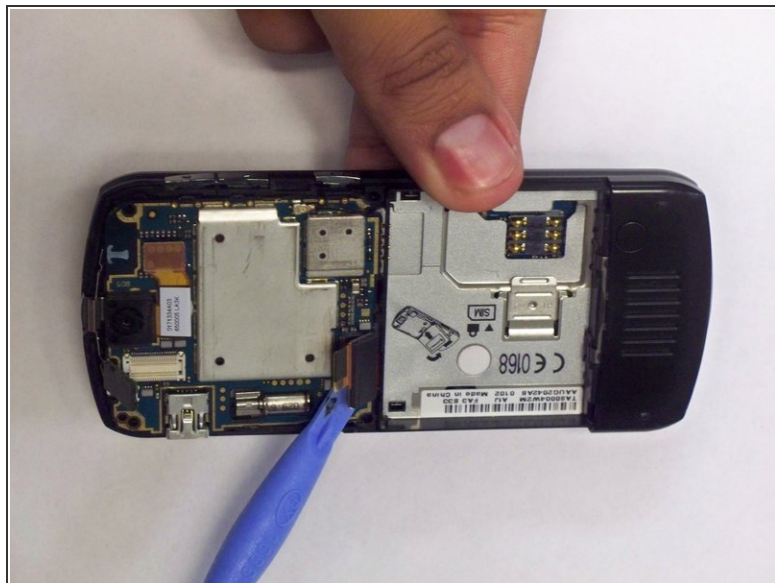
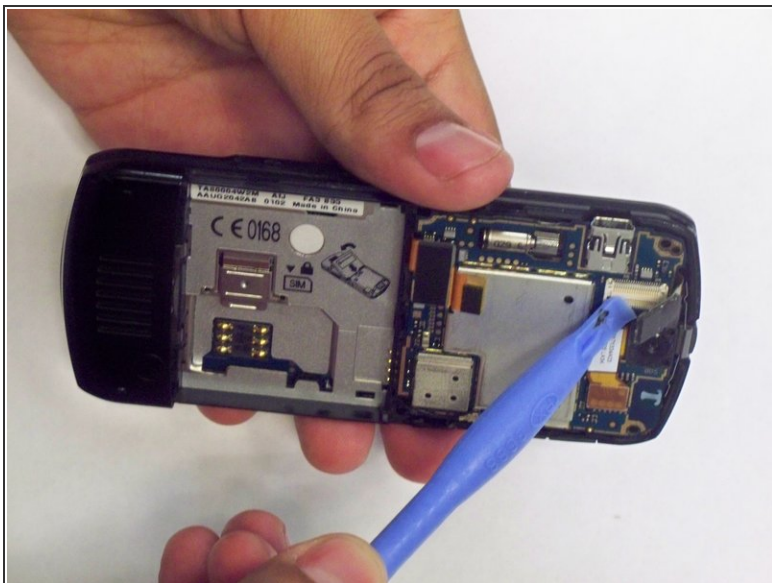
- Remove the four T6 2 mm TX Torx screws

Step 4



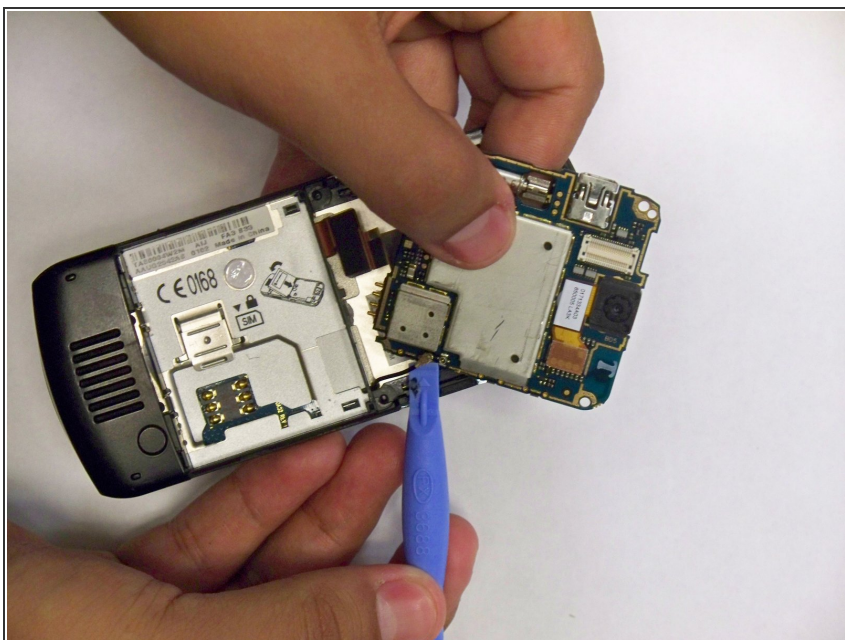
- Insert the flat end of a plastic opening tool and pry the metal cover up off the phone.

Step 5



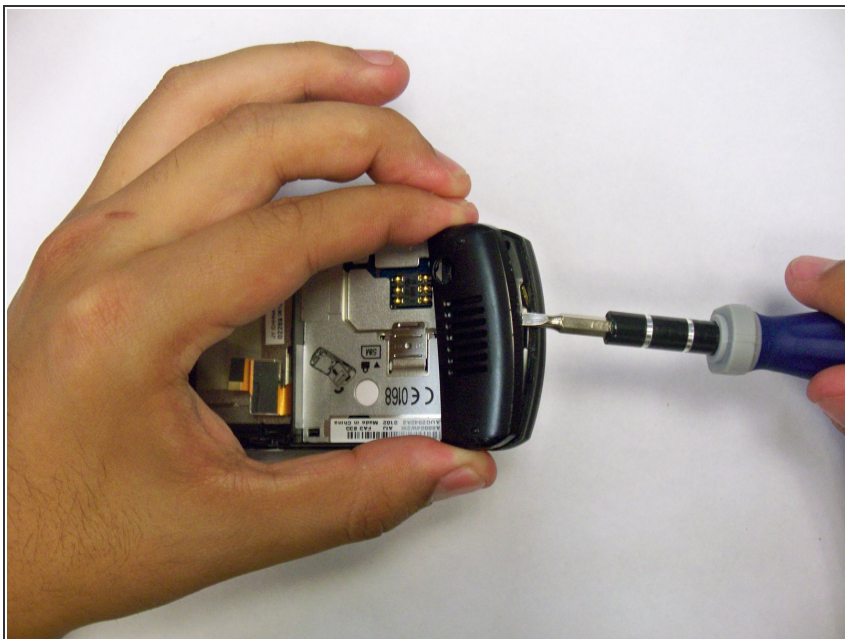
- Carefully, disconnect the two connectors from their sockets on the motherboard using the flat end of a plastic opening tool.

Step 6



- Use a plastic opening tool to pry the antenna cable connectors from its respective socket on the motherboard.
- De-route the antenna cable by pulling it out.

Step 7



- Use a spudger to lift and remove the black plastic screw cover at the bottom of the phone near the speaker
- The cover is attached by adhesive, so some force may be required.

Step 8



- Insert the flat end of a spudger and pry the frame off the phone.
- The frame is attached by adhesive, so some force may be required

To reassemble your device, follow these instructions in reverse order.