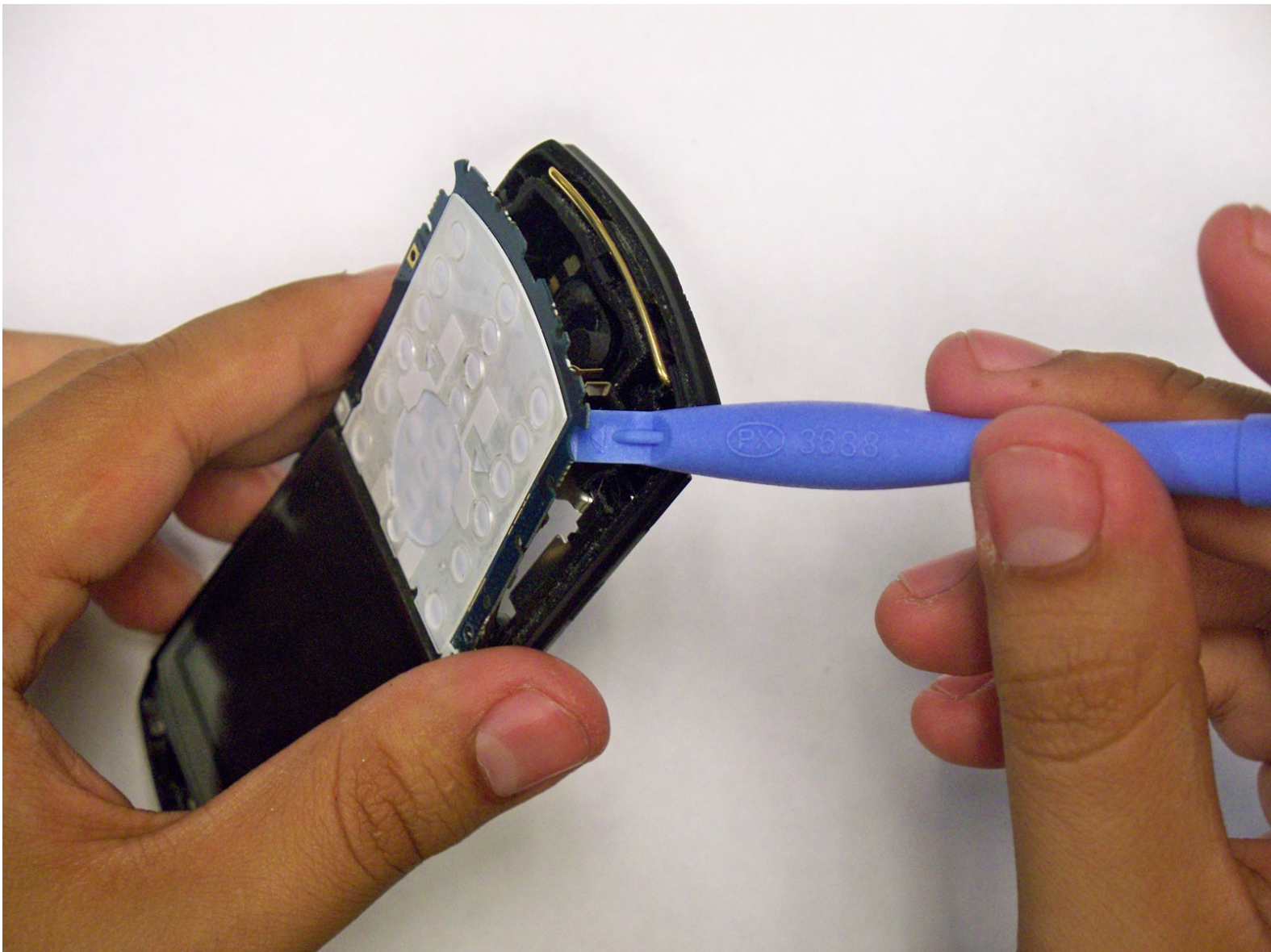




Motorola Slvr L7 Keypad Replacement

A Step-by-Step guide to complete disassembly of Motorola phone into it's main components.

Written By: Jorge Trujillo



INTRODUCTION

Use this guide to replace the keypad.



TOOLS:

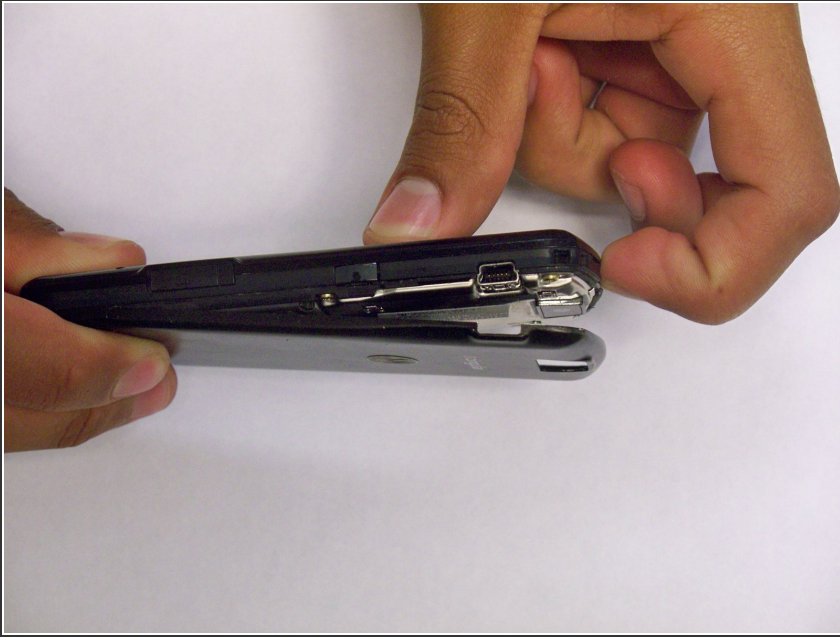
- [T6 Torx Screwdriver](#) (1)
- [iFixit Opening Picks set of 6](#) (1)
- [iFixit Opening Tools](#) (1)



PARTS:

- [Motorola Slvr L7 Kaypad](#) (1)

Step 1 — Keypad



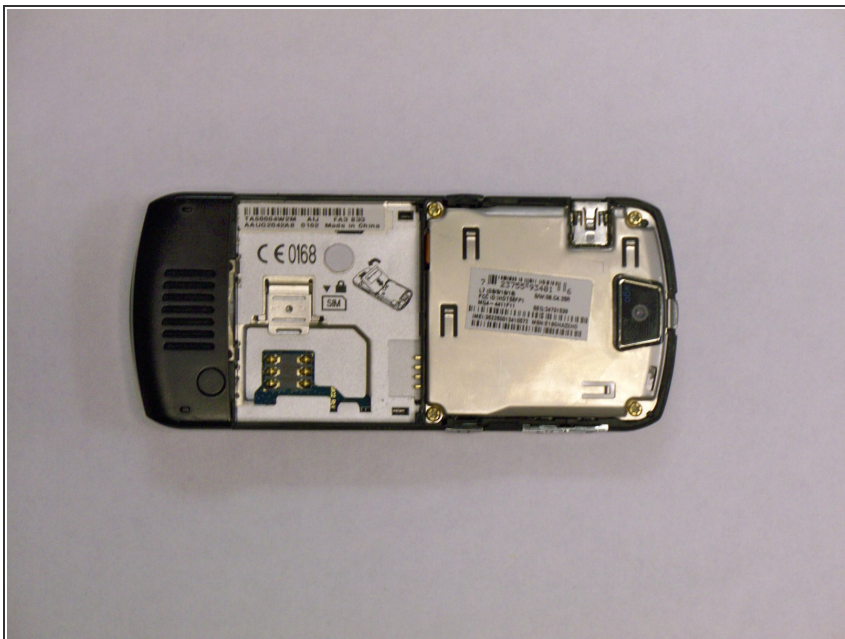
- Push down on the black tab located at the top center of the Motorola phone

Step 2



- Remove the battery by pulling the battery from the top center

Step 3



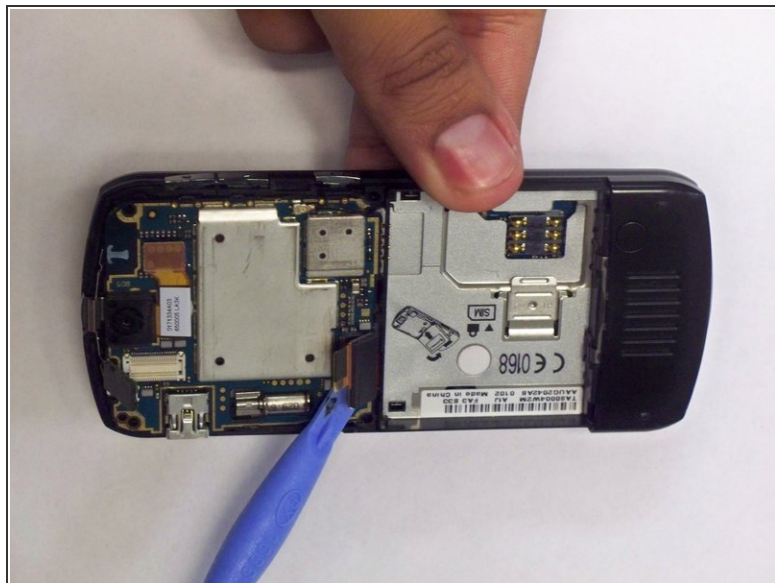
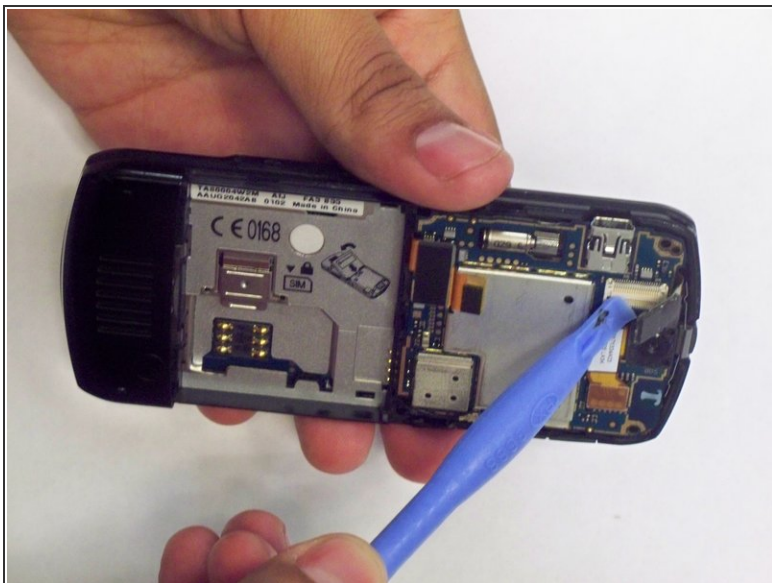
- Remove the four (4) T6 Torx screws from the rear metal plate.

Step 4



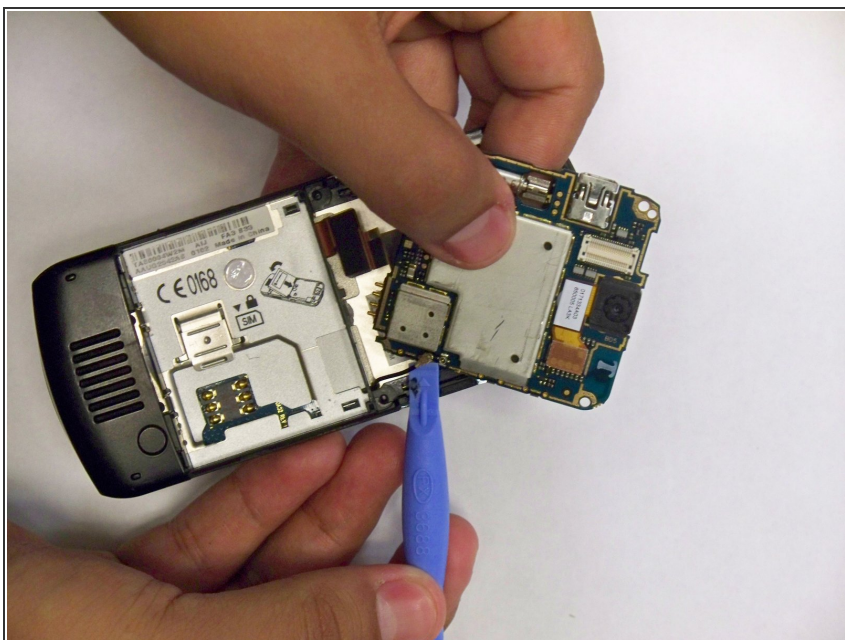
- Insert the flat end of a spudger and pry the metal cover up off the phone

Step 5



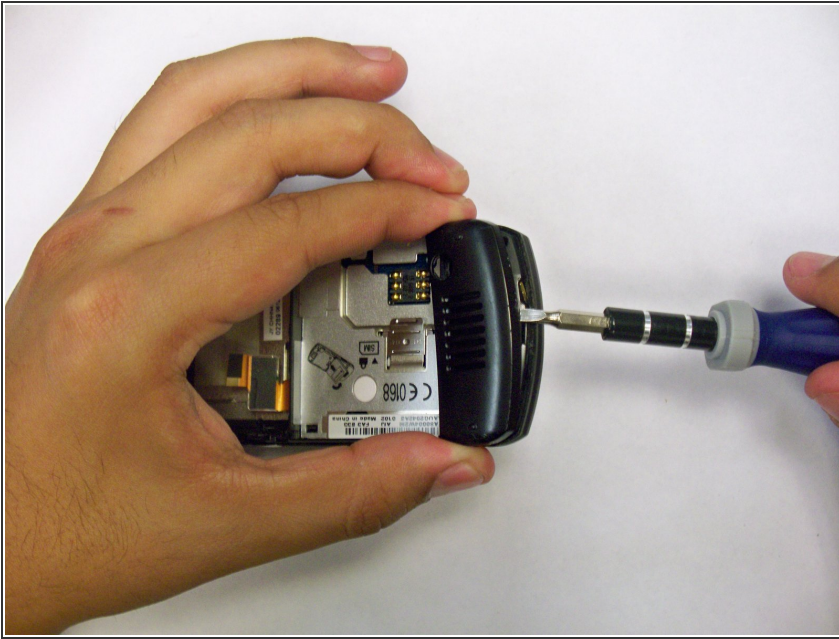
- Carefully, disconnect the two connectors from their sockets on the motherboard using the flat end of a spudger.

Step 6



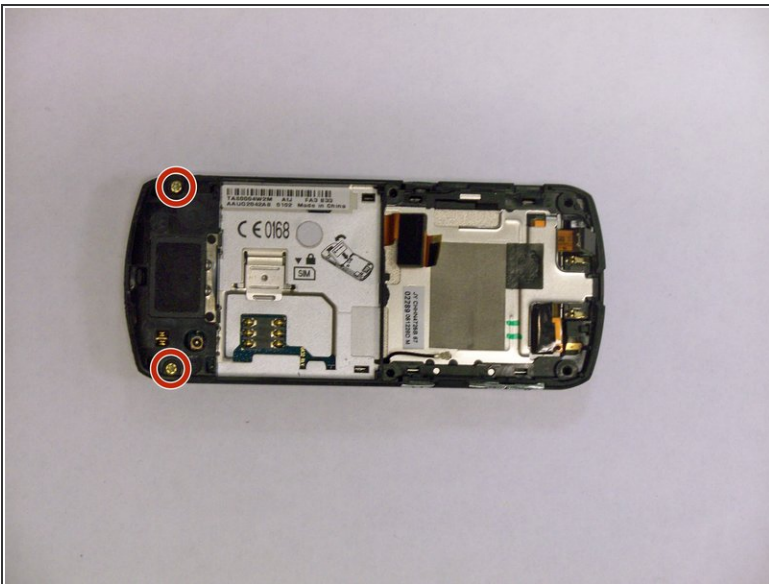
- Use a spudger to pry the antenna cable connectors from its respective socket on the motherboard.
- De-route the antenna cable by pulling it out.

Step 7



- Starting at one side, use a spudger to lift and remove the black plastic screw cover at the bottom of the phone near the speaker
- The cover is attached by several clips, so some force may be required, especially to unclip the first clip.
- Be careful not to loose the round plastic piece that covers the microphone.

Step 8



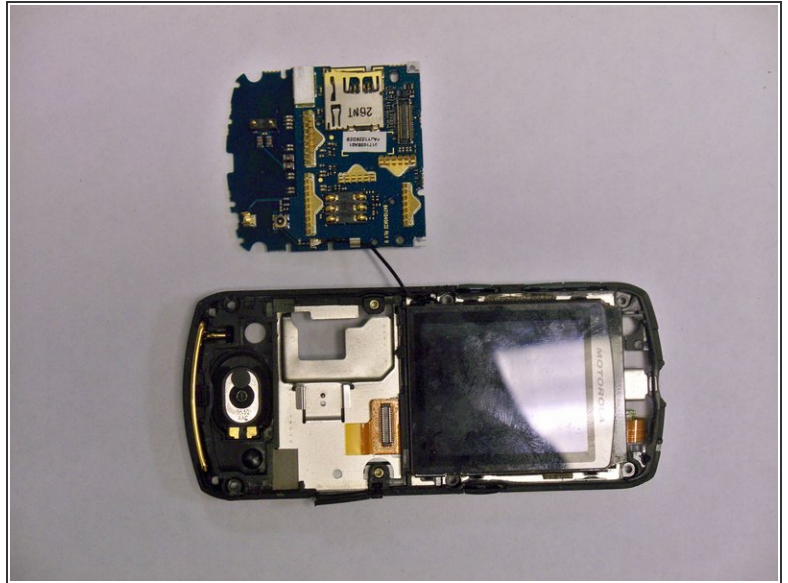
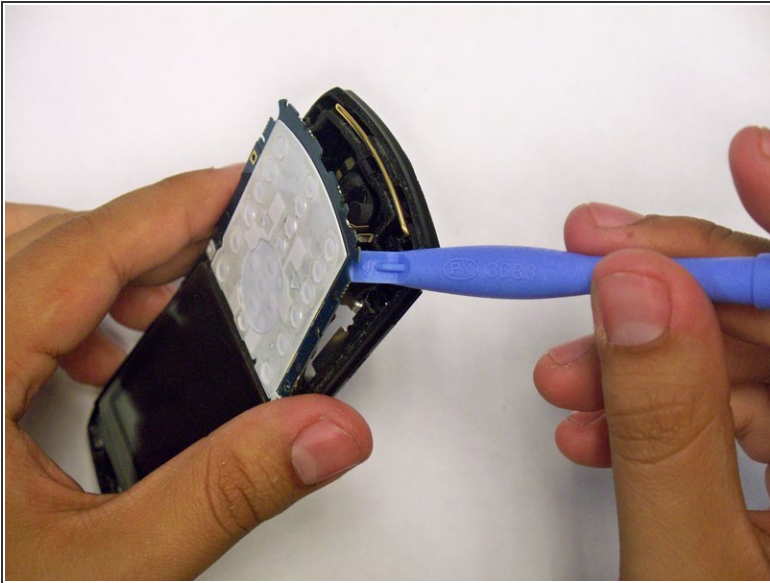
- Remove the two newly exposed T6 screws.

Step 9



- Starting at the top, insert the flat end of a spudger and pry the frame of the phone.
- The frame is attached by several clips, so some force may be required to dislodge the first clip.
- Work your tool around the entire edge of the phone, moving as soon as you hear a clip come undone, to avoid breaking the frame.

Step 10



- Carefully, Insert the flat end of a spudger and pry the keyboard up off the phone.

To reassemble your device, follow these instructions in reverse order.