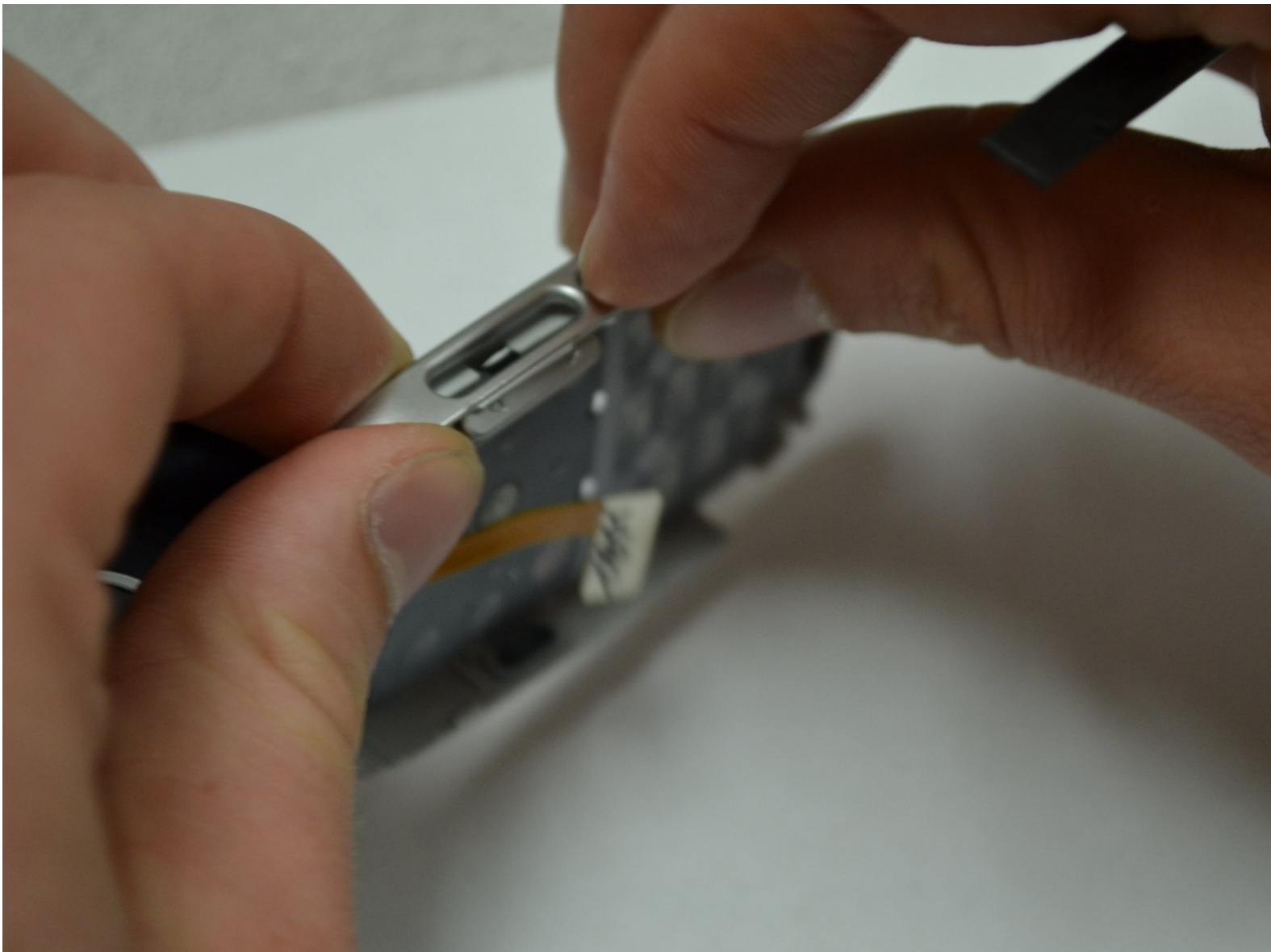




Motorola W315 Keypad Replacement

This guide will show how to access and replace the keypad in the Motorola W315.

Written By: Justin Scott

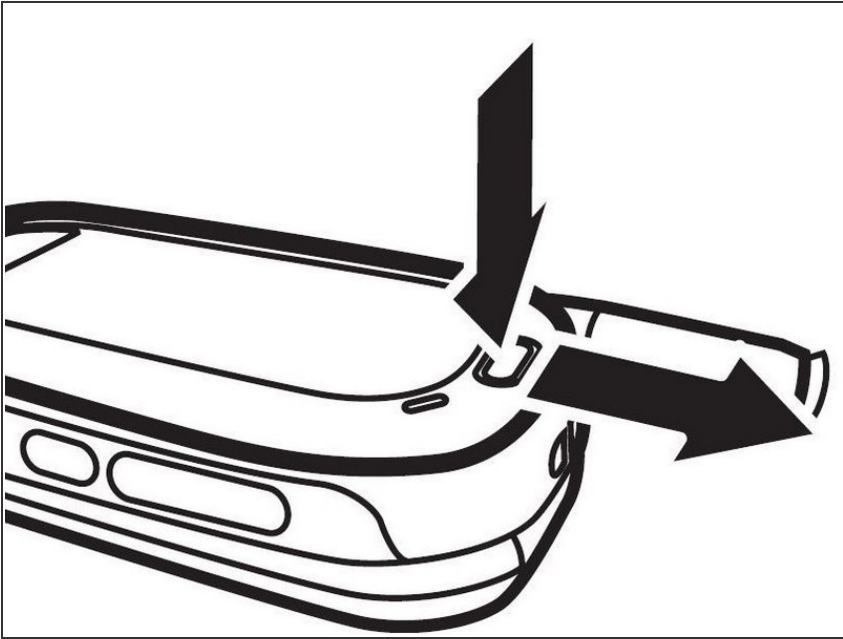




TOOLS:

- [T6 Torx Screwdriver](#) (1)
 - [iFixit Opening Tools](#) (1)
-

Step 1 — Battery



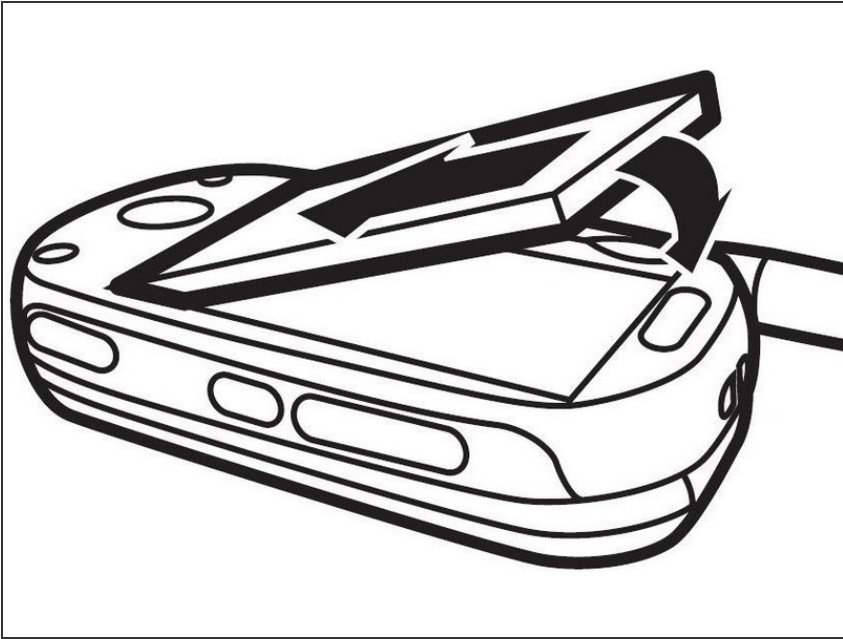
- Turn off the phone.
- Turn the device over.
- Remove the battery cover.

Step 2



- Insert thumb in the gap between the button and the battery and pry the battery upwards.
- Pull the battery out of the phone.

Step 3



- Insert the new battery.

Step 4 — Rear Case



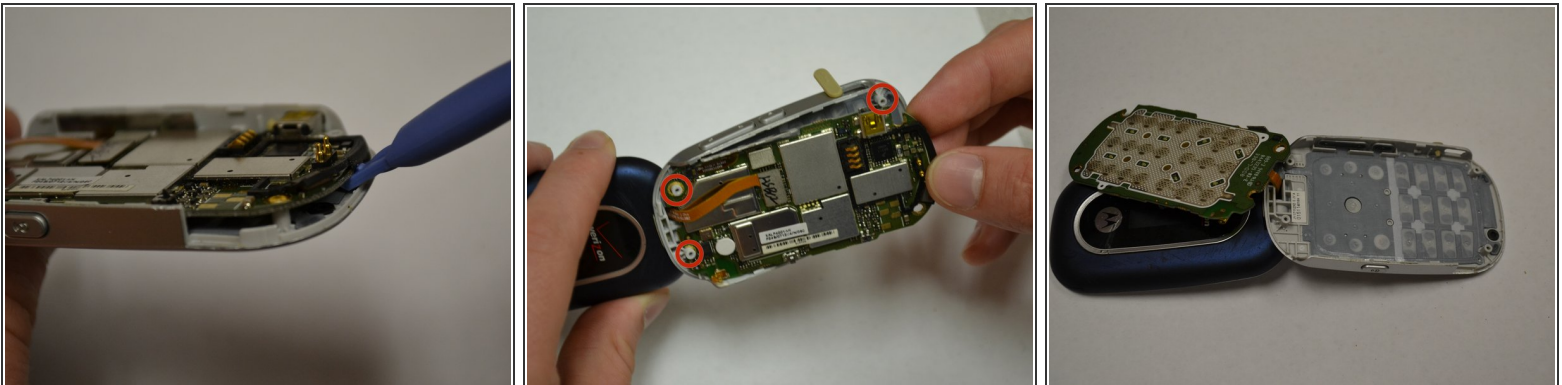
- Four 5 mm screws are visible (circled in red).
- Using the T6 tool, remove all four 5mm screws and set them aside.

Step 5



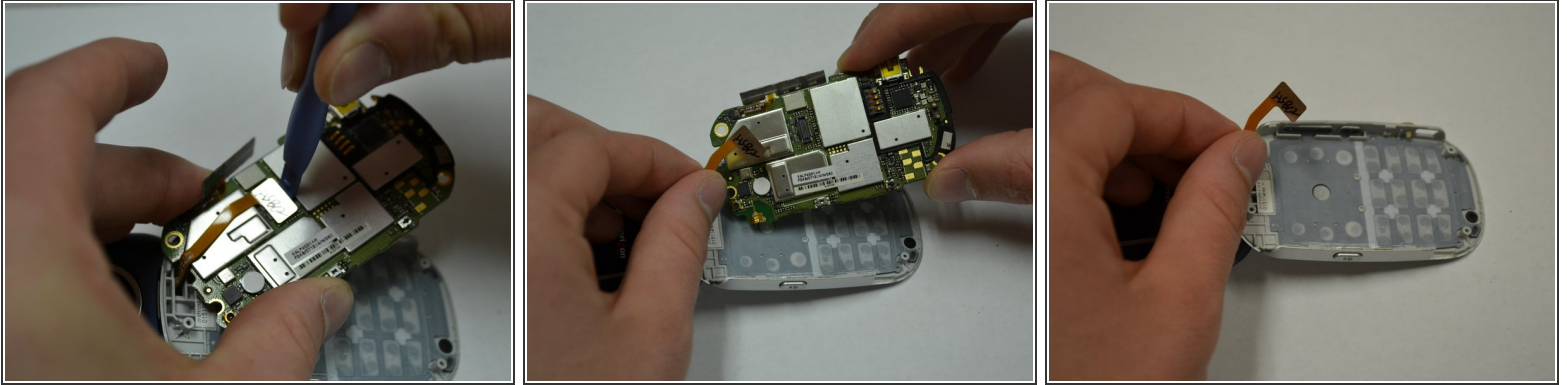
- Insert the plastic opening tool between the front and back panels of the lower half of the device.
- Slide the tool around the entire frame of the device until it has loosened.
- Remove the back of the device.

Step 6 — Circuit Board



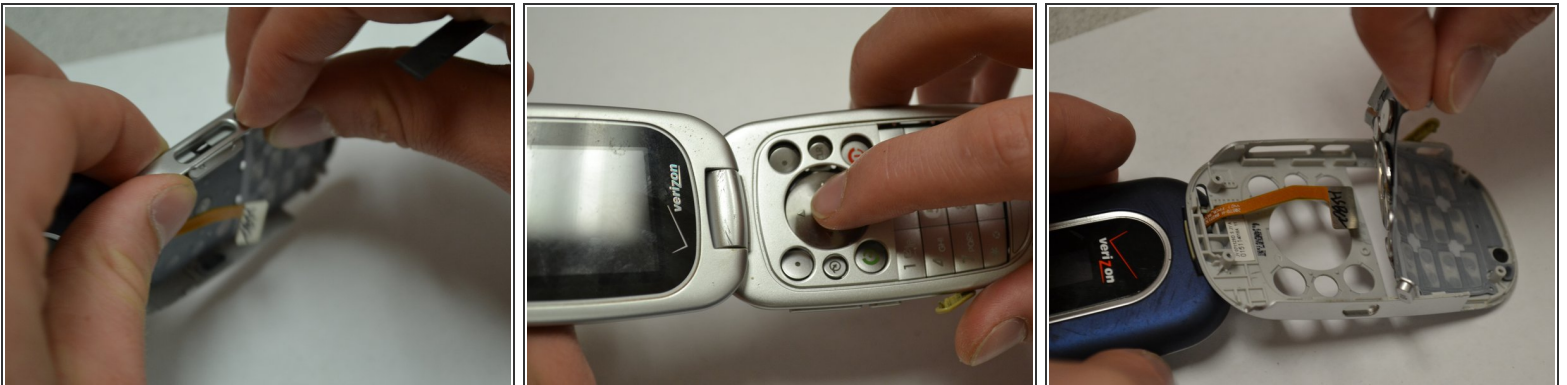
- Using the plastic opening tool, gently lift the circuit board off of the four gray pegs that it rests upon.

Step 7



- Use the plastic opening tool to remove the chip connected by magnetic strip to the screen.
- Remove circuit board.

Step 8 — Keypad



- Apply pressure to the side buttons to remove them from the frame.
- Turn the device over and push the keypad to loosen it from the frame.
- Turn the device over again and gently pull the keypad away from the frame.
- Warning: Keypad may not respond due to unclean button contacts, make sure the button contacts remain clean throughout the disassembly and reassembly of the phone.

To reassemble your device, follow these instructions in reverse order.

Information on recycling/disposing of your electronic waste is located under Additional Information on the device page.