



# Motorola W385 Front Casing Replacement

Written By: Austin Hobbs



## INTRODUCTION

Is the plastic casing cracked or severely scratched? Replace it.



### TOOLS:

- [Spudger](#) (1)
- [T6 Torx Screwdriver](#) (1)



### PARTS:

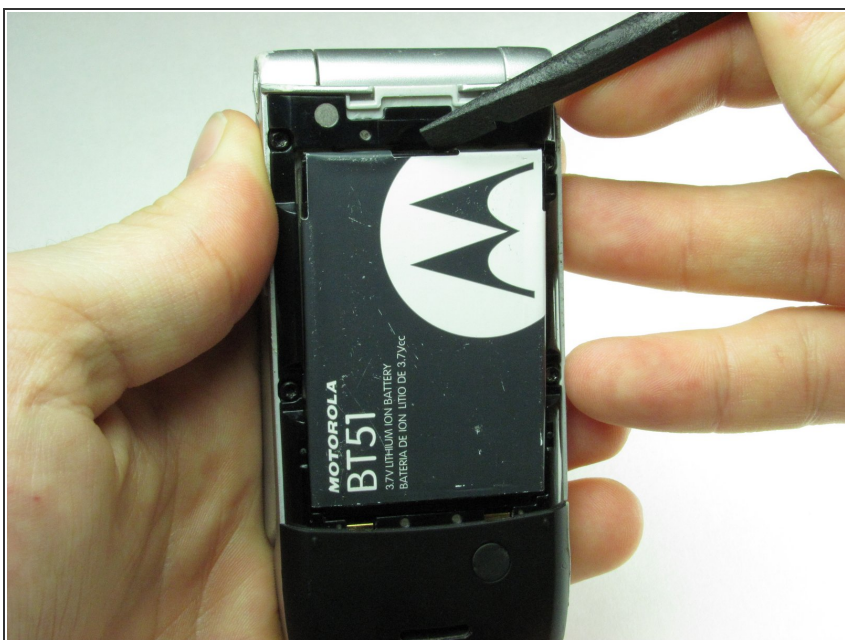
- [Motorola W385 Casing](#) (1)

## Step 1 — Battery



- Using your finger, press down on the clip holding the back cover on.

## Step 2



- Using the spudger or your finger, gently pull the battery out from the top.

### Step 3 — Front Casing



- Remove the four rubber pieces from the face of the phone using the sharp end of the spudger.
- ⓘ The rubber pieces are held in with a mild adhesive.

### Step 4




- Remove the four Torx-6 screws from underneath the rubber pieces.



## Step 5



- Close the phone before proceeding.
  - Using the flat end of the spudger, insert it under the plastic at the top left of the phone.
  - Gently, although a small amount of force is required, use a twisting motion to pull the plastic casing away from the body of the phone.
  - Continue to move around the phone counter clockwise until the casing is separated from the body.
-  It is not unusual for it to pop off before making it back to the starting point.

## Step 6



- If the casing has not popped off of the body, remove it carefully from the the phone.

To reassemble your device, follow these instructions in reverse order.