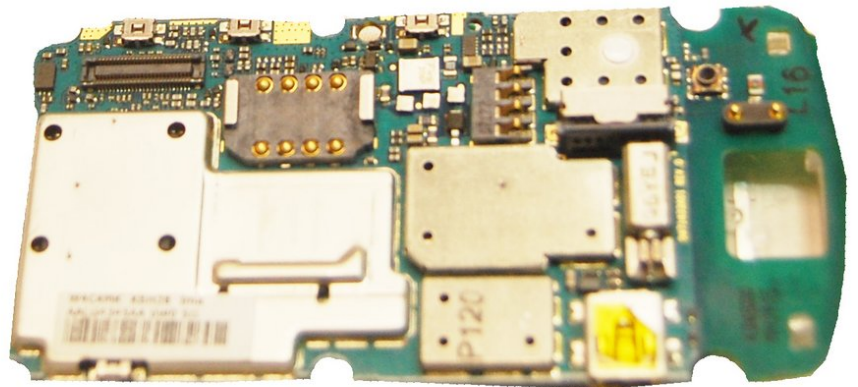
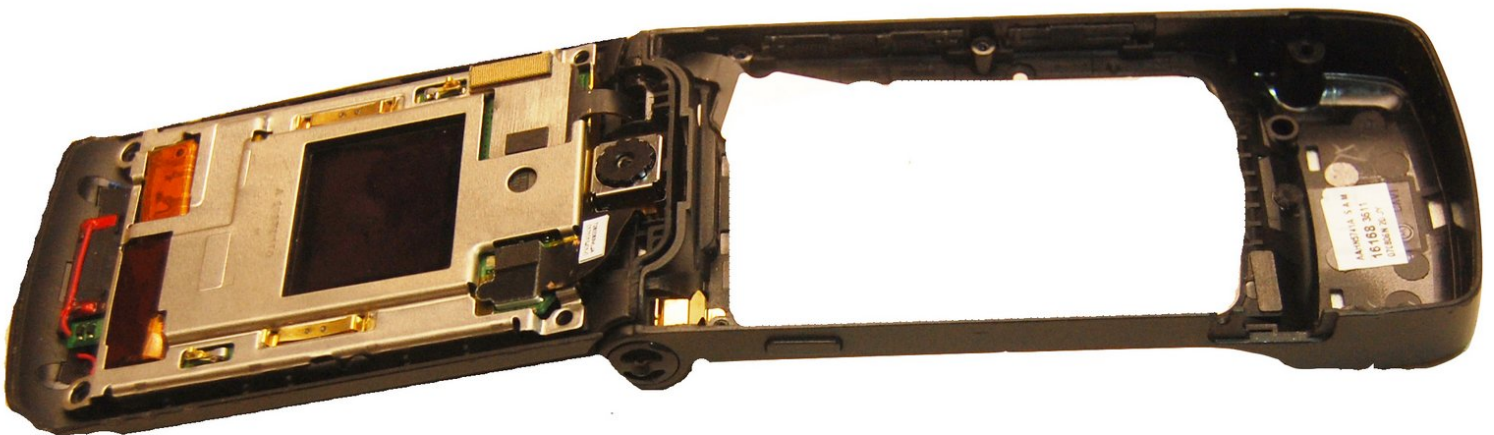




Motorola W490 Upper Metal Frame Replacement

This guide will help accomplish the removal or installment of the upper metal frame.

Written By: Hannah

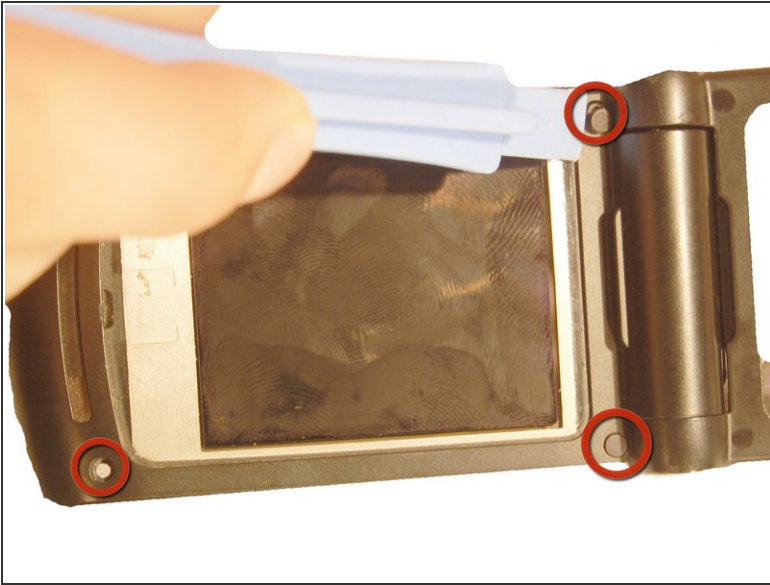




TOOLS:

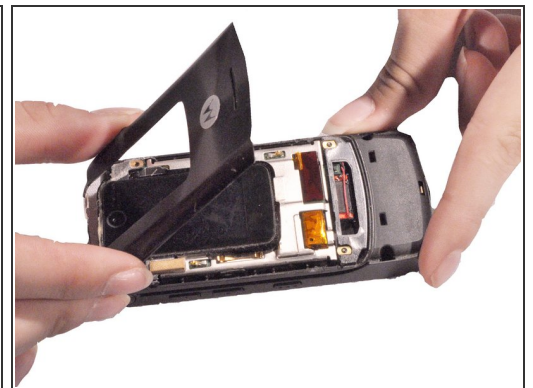
- [T5 Torx Screwdriver](#) (1)
 - [iFixit Opening Tools](#) (1)
-

Step 1 — Upper Metal Frame



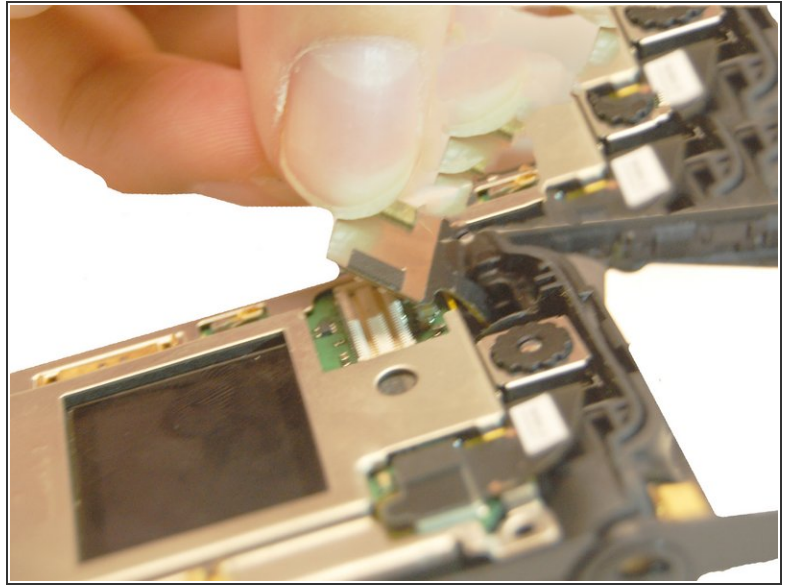
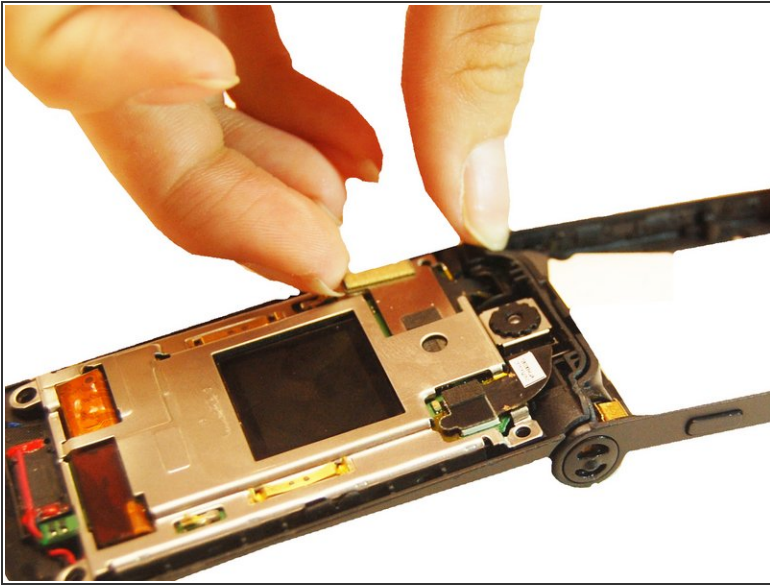
- Use the blue plastic opening tool to pry off all four of the rubber stickers from the upper inside face.
- Use the Torx T5 screwdriver to remove the four 5.4 mm screws from the upper inner face.

Step 2



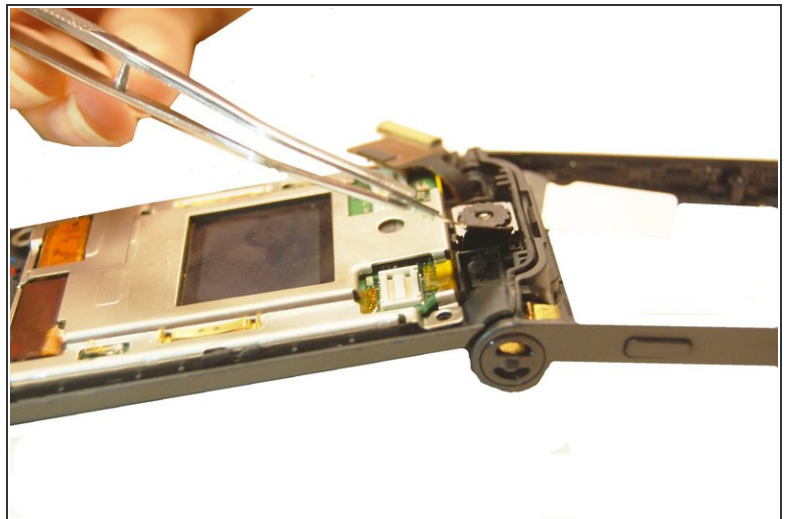
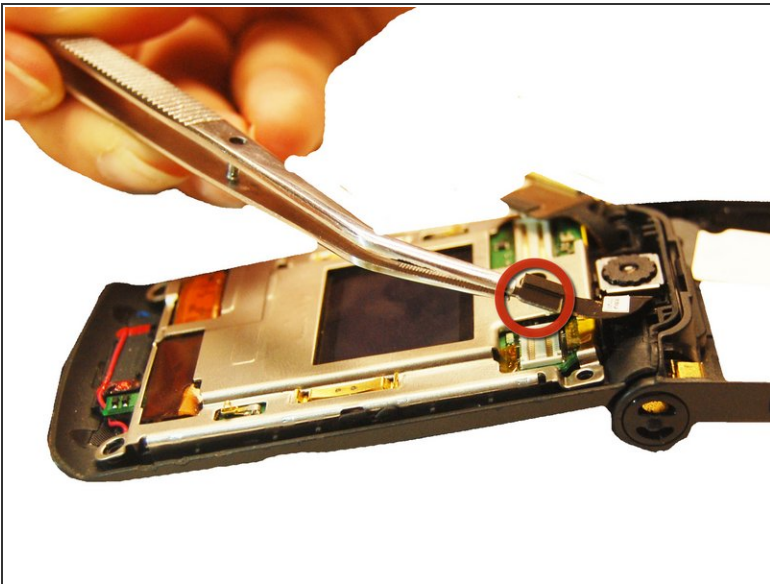
- Use a flathead screwdriver or plastic opening tools to help pry the top cover away from the phone.

Step 3



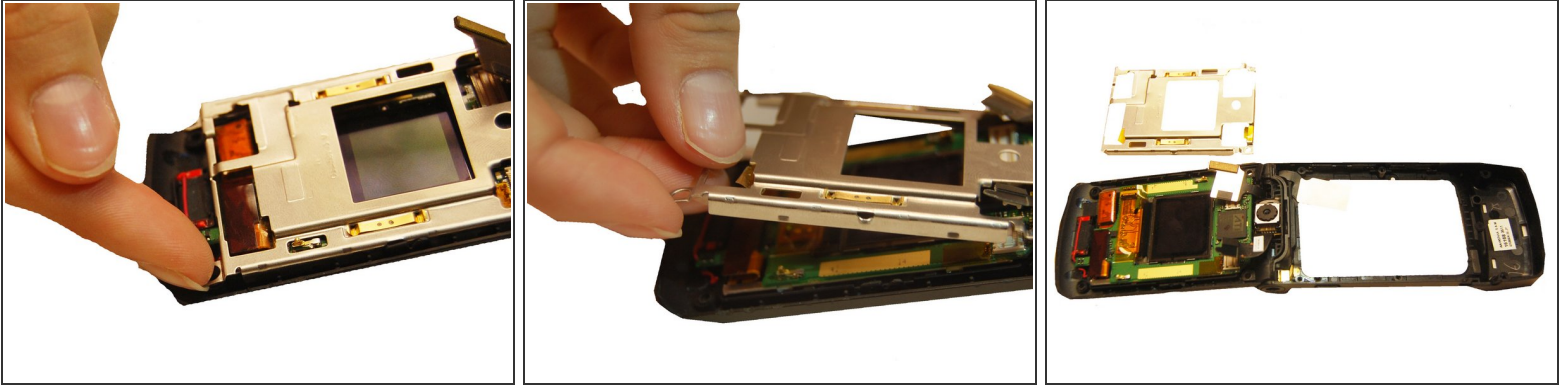
- Pull the flex cable connection away from the top of the phone.

Step 4



- Pull the camera connection away from the top of the phone.

Step 5



- Pull the upper metal frame away from the phone.

To reassemble your device, follow these instructions in reverse order.