



Motorola Xoom 2 Backplate Replacement

How to disassemble the Motorola Xoom 2, and access its internal components.

Written By: Ryker Hull



INTRODUCTION

If you need to replace any of the components in your Motorola Xoom 2, this guide can help you to open your device to access the internal components.

Note: This guide is a prerequisite to all of the other repair guides for this device.



TOOLS:

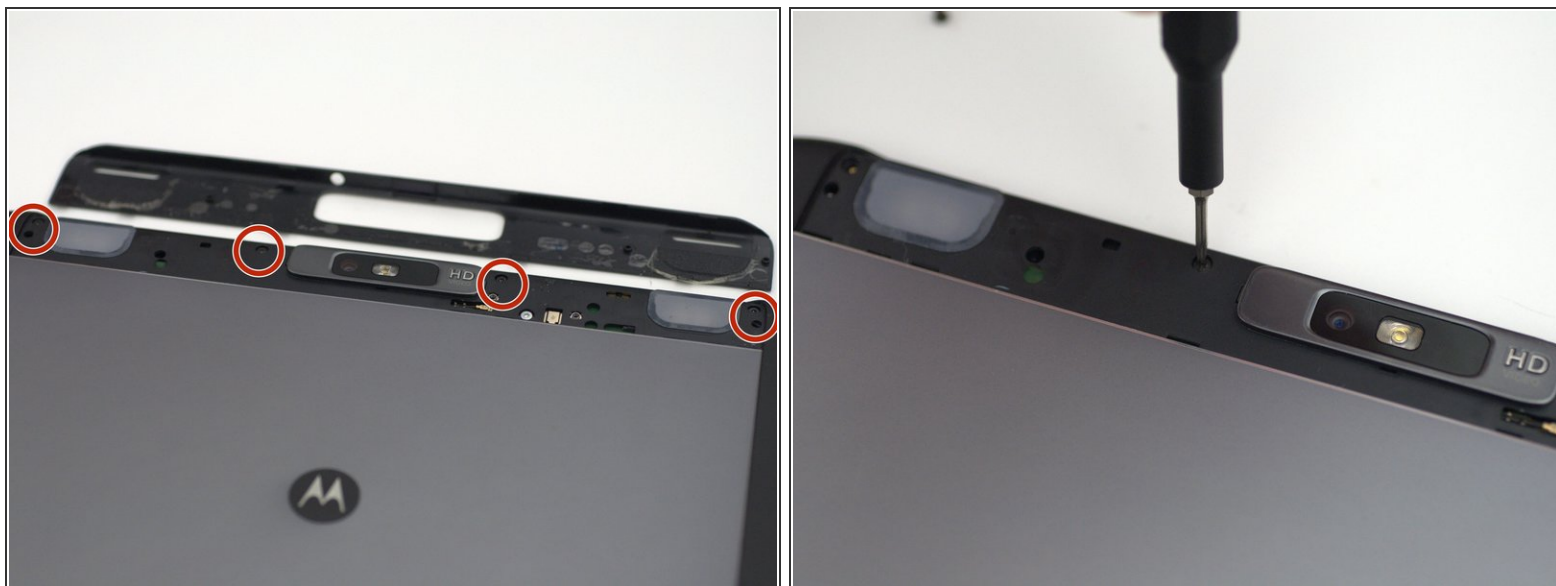
- [iFixit Opening Picks set of 6](#) (1)
 - [T5 Torx Screwdriver](#) (1)
 - [iFixit Opening Tools](#) (1)
-

Step 1 — Backplate



- Pry off the silver top back cover (the panel around the camera) with iFixit opening picks or a similar implement.

Step 2




- Using a T5 screwdriver, unscrew the four 1.5mm screws holding the main back cover. These screws are arranged in a line across the top of the back of the device.

Step 3



- Turn the device over and using a pry tool and the opening picks, gently apply pressure between the outside edge of the seal marked with the arrow. Slowly move around the edges of the device, applying even pressure, and separate the back plate from the display.

 There is adhesive between the back-plate and battery.

Step 4



- Remove the back plate from your device.

To reassemble your device, follow these instructions in reverse order.