



# Motorola Xoom 2 Battery Replacement

This guide will demonstrate how to replace the internal battery of the Motorola Xoom 2 / Xyboard 10.1 WiFi.

Written By: Ryker Hull



## INTRODUCTION

Is your device struggling to hold a charge? Is the battery draining quicker than normal? Is your device not turning on? If you experience any of the above symptoms with your Motorola Xoom 2, the battery in your device may need to be replaced. This guide will help you replace the battery.

**Note: all steps involving a screwdriver in this guide will be done with a Torx T5 screwdriver.**



### TOOLS:

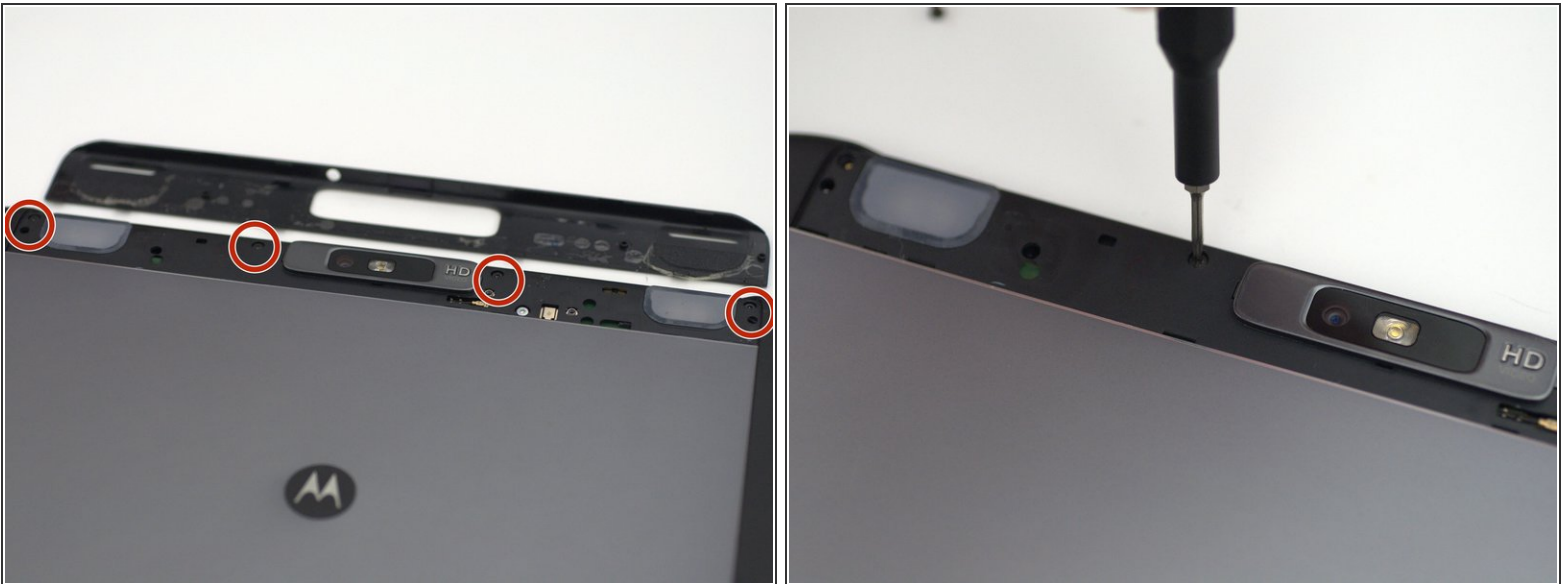
- [T5 Torx Screwdriver](#) (1)
- [iFixit Opening Tools](#) (1)
- [iFixit Opening Picks set of 6](#) (1)
- [Spudger](#) (1)
- [Electrical Tape in 6 Assorted Colors](#) (1)

## Step 1 — Backplate



- Pry off the silver top back cover (the panel around the camera) with iFixit opening picks or a similar implement.

## Step 2




- Using a T5 screwdriver, unscrew the four 1.5mm screws holding the main back cover. These screws are arranged in a line across the top of the back of the device.



### Step 3



- Turn the device over and using a pry tool and the opening picks, gently apply pressure between the outside edge of the seal marked with the arrow. Slowly move around the edges of the device, applying even pressure, and separate the back plate from the display.

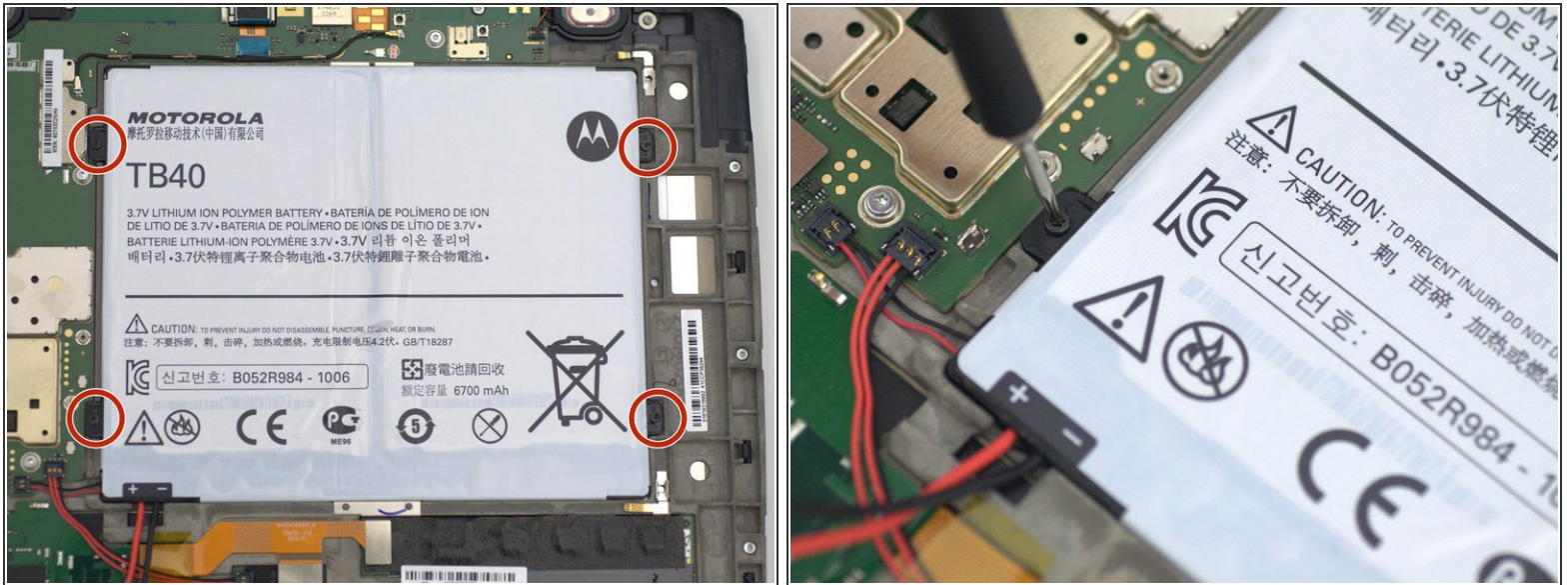
 There is adhesive between the back-plate and battery.

### Step 4



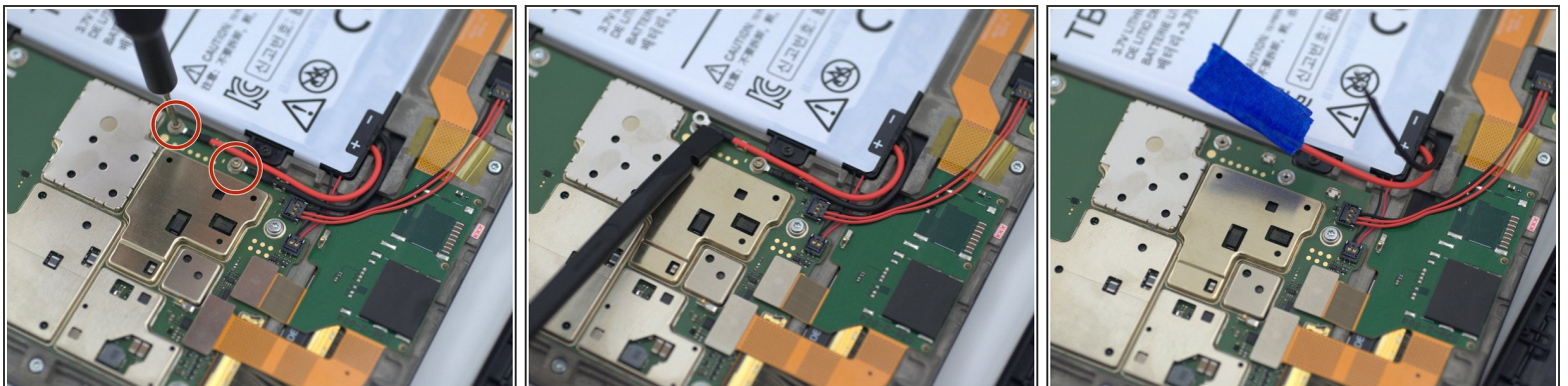
- Remove the back plate from your device.

## Step 5 — Battery



- Using a Torx T5 screwdriver, remove the four 1.5mm screws holding down the battery around its perimeter.

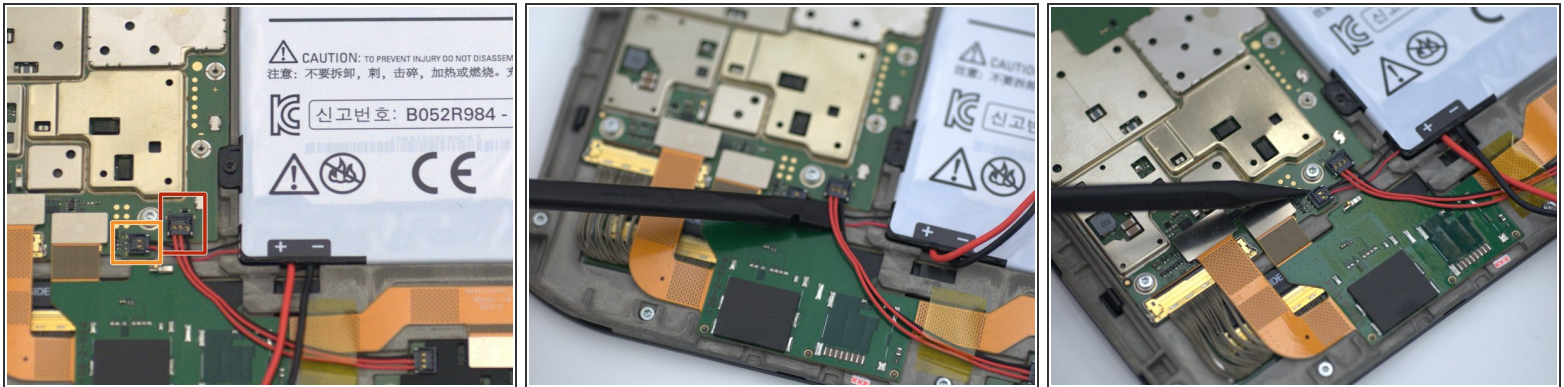
## Step 6



- Using a Torx T5 screwdriver remove the two 1.5mm screws holding down the battery leads and carefully pry the battery leads loose from the cable clips with a spudger.
- ⚠ Following best safety practices, insulate the red positive lead by wrapping the connector with any form of non-conductive tape, such as masking tape or electrical tape.



## Step 7



- Lifting gently from the bottom with a spudger, first disconnect the three pin connector from the tablet.
  - After disconnecting the three pin connector, remove the two pin battery connector by lifting gently from the bottom with a spudger.
- ⚠ Be careful not to use too much force! The connectors used are made of soft plastic and can break easily.

## Step 8



- Using the opening picks, carefully lift the battery and remove it from the device.

To reassemble your device, follow these instructions in reverse order.