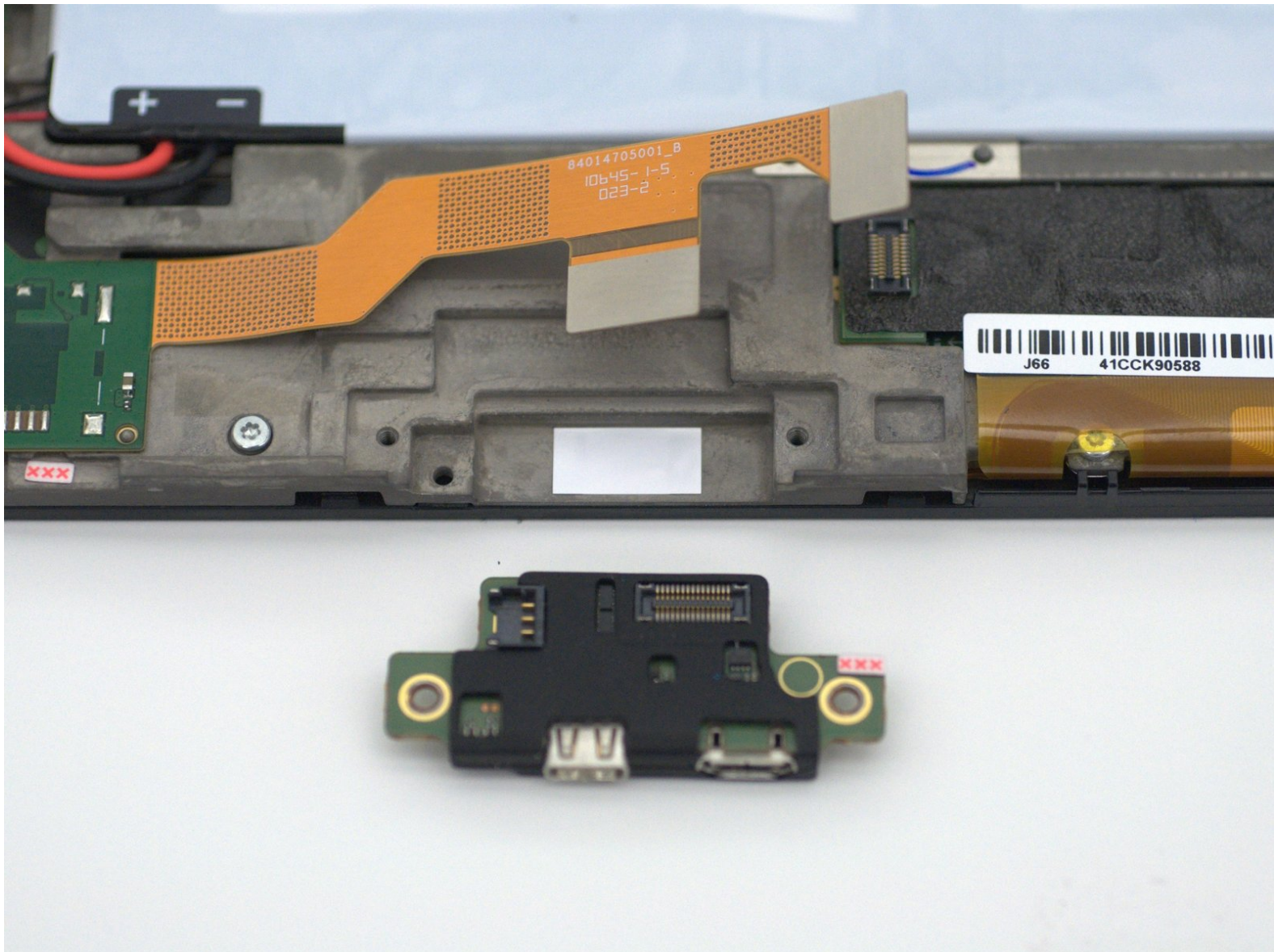




Motorola Xoom 2 Charging Port Replacement

This guide will demonstrate how to replace the charging port on the Motorola Xoom 2 tablet.

Written By: Ryker Hull



INTRODUCTION

Common problems with the Xoom 2 is a gradually forming looseness in the charging port assembly or even a bent or broken charging port. Follow this guide to replace or fix your charging port assembly.

Note: We will be using a Torx T5 screwdriver for all of the steps in this guide.



TOOLS:

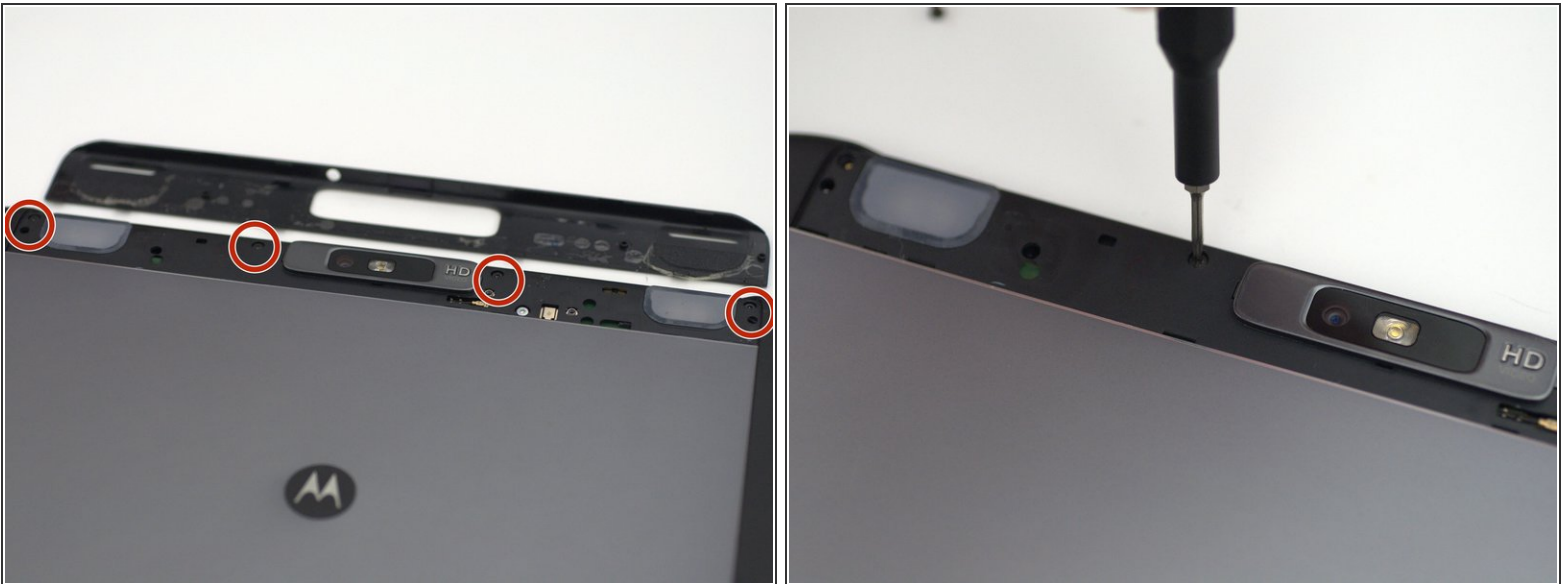
- [iFixit Opening Picks set of 6](#) (1)
 - [T5 Torx Screwdriver](#) (1)
 - [iFixit Opening Tools](#) (1)
 - [Halberd Spudger](#) (1)
 - [Tweezers](#) (1)
-

Step 1 — Backplate



- Pry off the silver top back cover (the panel around the camera) with iFixit opening picks or a similar implement.

Step 2




- Using a T5 screwdriver, unscrew the four 1.5mm screws holding the main back cover. These screws are arranged in a line across the top of the back of the device.

Step 3



- Turn the device over and using a pry tool and the opening picks, gently apply pressure between the outside edge of the seal marked with the arrow. Slowly move around the edges of the device, applying even pressure, and separate the back plate from the display.

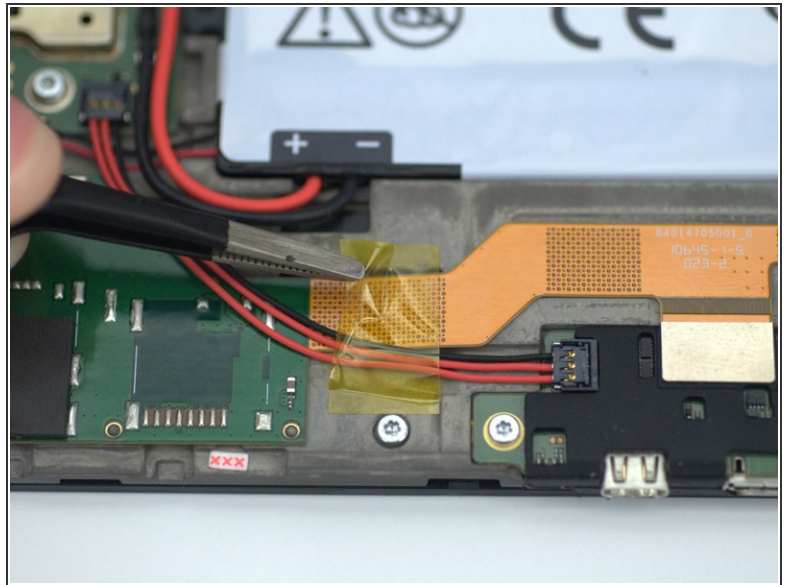
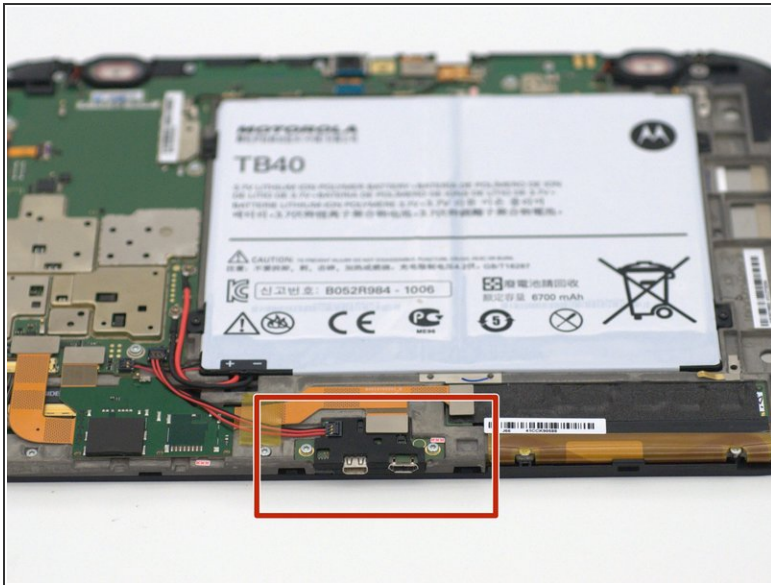
 There is adhesive between the back-plate and battery.

Step 4



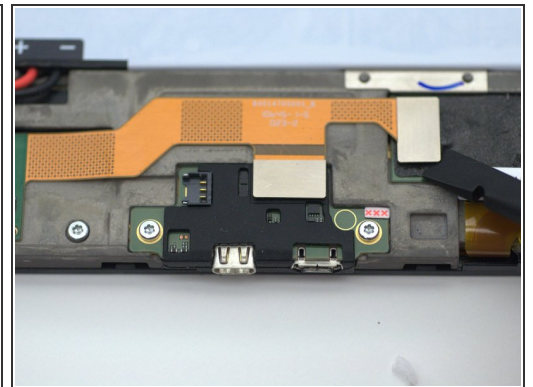
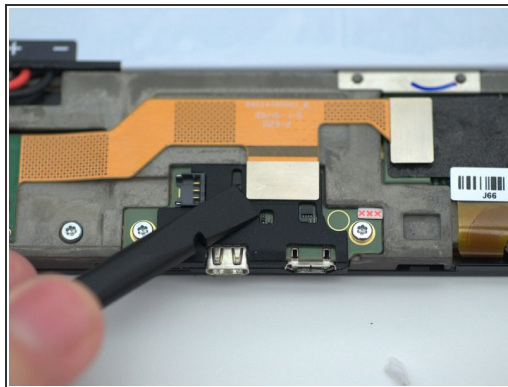
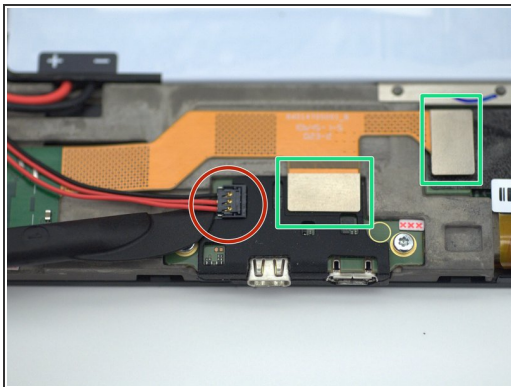
- Remove the back plate from your device.

Step 5 — Charging Port



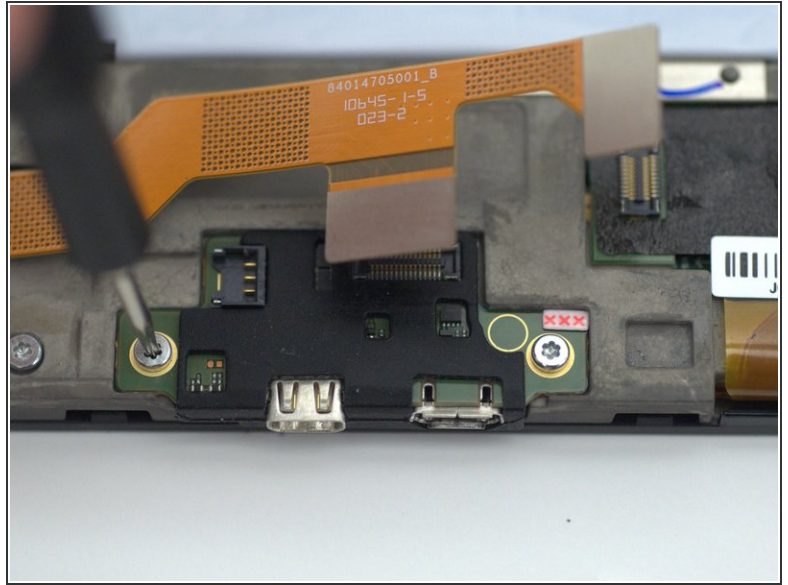
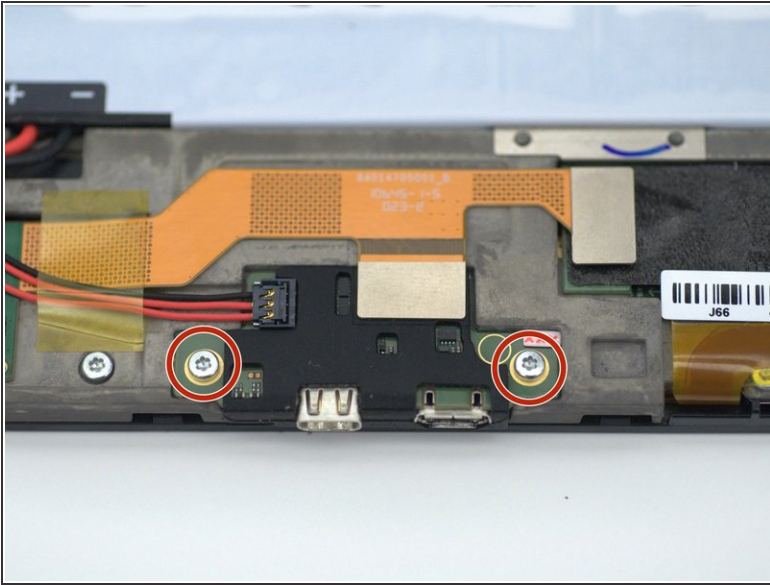
- Using tweezers, gently pry up the piece of yellow Kapton tape that is holding several cables in place.
- ⓘ Set this piece of tape aside, as it is required for reassembly.

Step 6



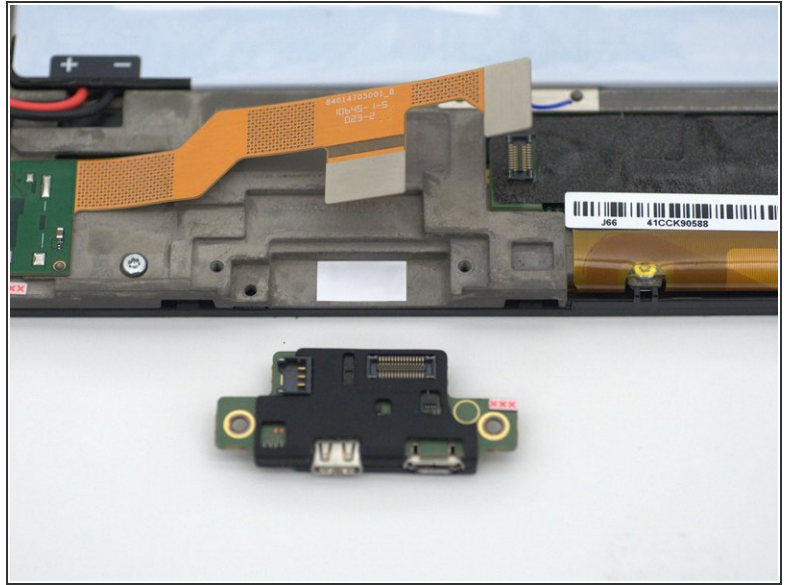
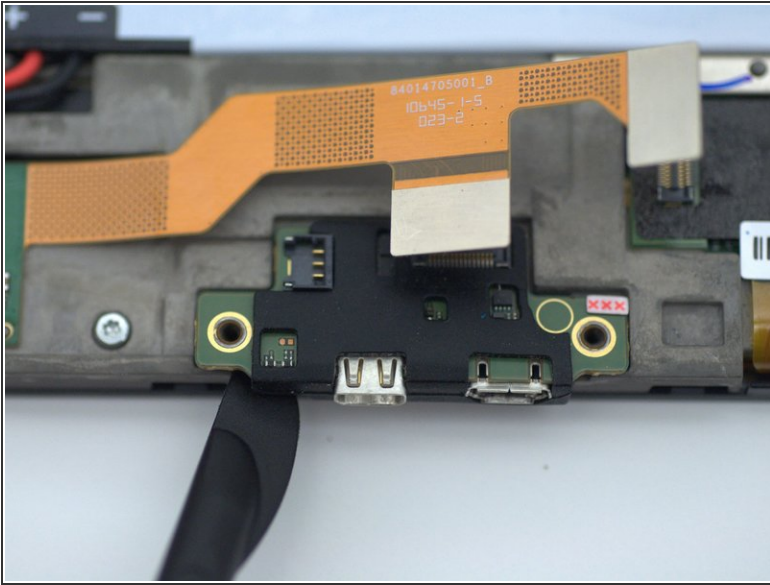
- Using a spudger, carefully disconnect the 3 pin cable.
- ⚠ The 3 pin cable connectors are made of soft, easily breakable plastic. Take care not to use unnecessary force during repair.
- Then carefully disconnect the flat yellow ribbon cable at both connection points.

Step 7



- Using a Torx T5 driver bit, unscrew the two 1.5mm screws holding down the charging port assembly.

Step 8



- Using a spudger, gently apply pressure between the chassis and charging port assembly to remove it.
- ⓘ The charging port should be free from the chassis and require little to no force to remove.
- ⓘ The rubber jacket covering the charging port assembly may need to be removed and reused, depending on whether or not the replacement comes with another one.

To reassemble your device, follow these instructions in reverse order.