



Motorola Xoom Wifi Back Cover Disassembly

This step-by-step replacement guide will help you take off the existing back cover and, in the process, shows you the steps for putting on a new one.

Written By: Mallika



INTRODUCTION

As this replacement guide works on an external component of the Xoom Wifi, there are no prerequisite steps.



TOOLS:

- [T5 Torx Screwdriver](#) (1)
- [iFixit Opening Tools](#) (1)

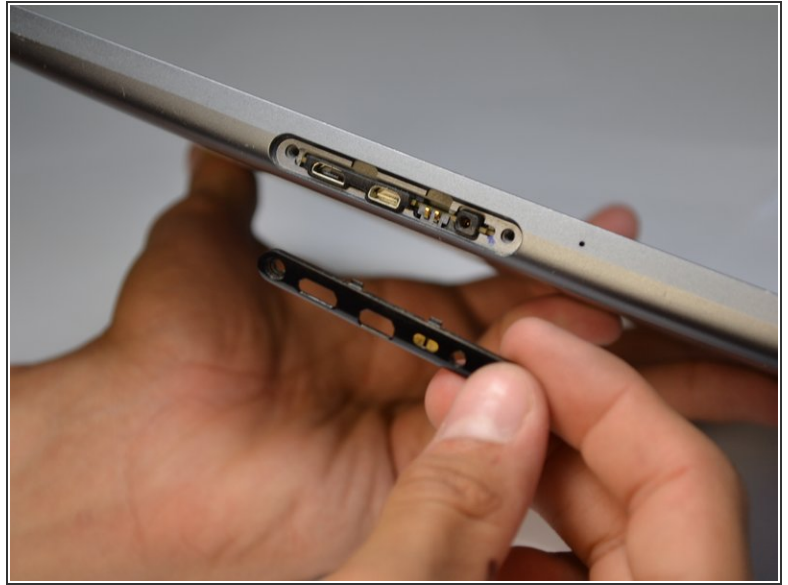
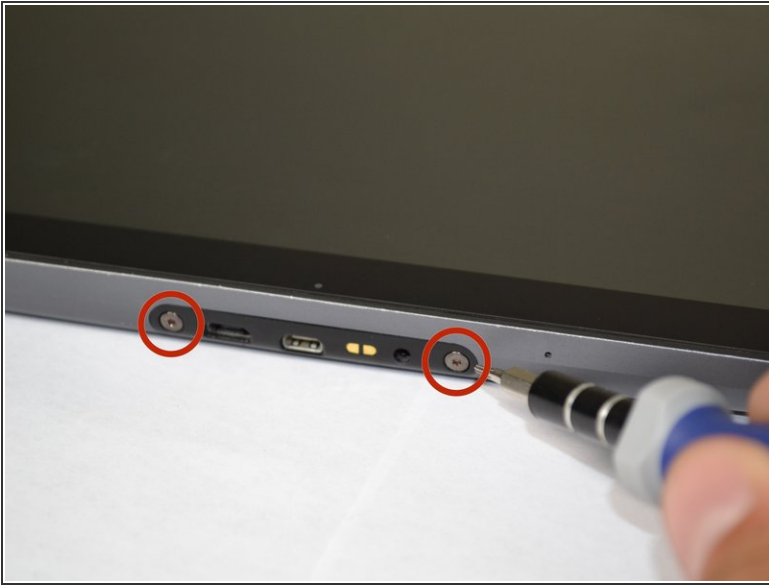


PARTS:

- [Motorola Xoom Back Cover](#) (1)

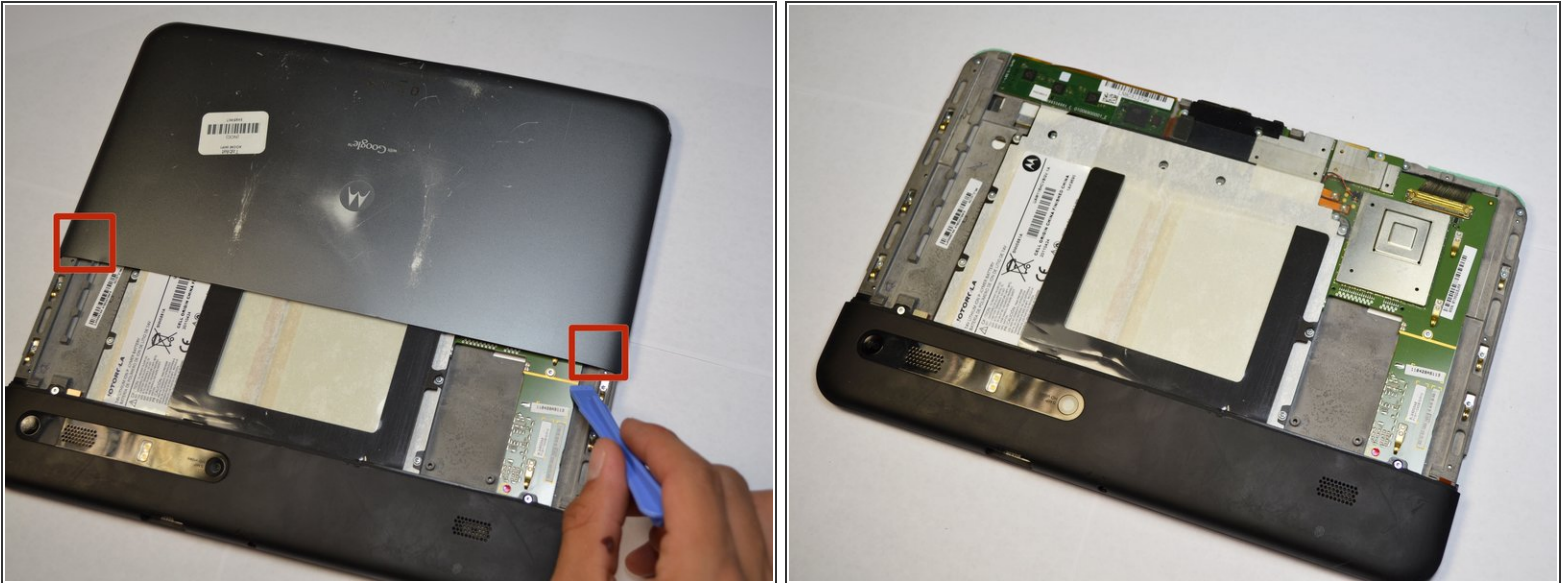
This only applies if the intention is to replace the back cover. Removal alone does not warrant needing a new one.

Step 1 — Back Cover Disassembly



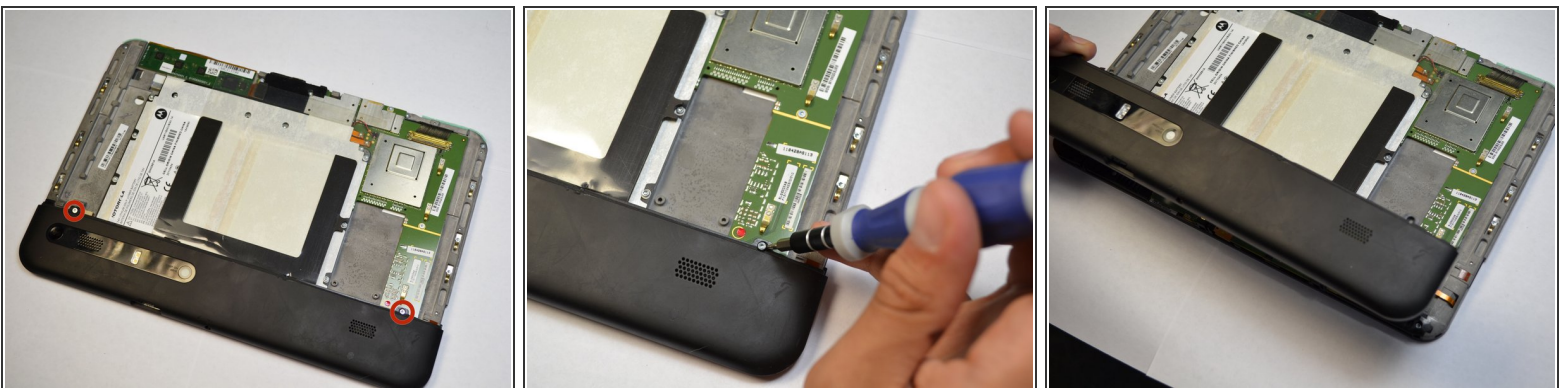
- There are two 6.6 mm screws that hold ports into place as well as the back panel. Remove these with a T5 Torx screwdriver.

Step 2



- Apply light pressure with hand and slide the back plate till it stops in this position.
- There is a flex clip on both sides that need to be pushed down in order for the plate to slide off completely. Use a plastic opening tool to release the flex clips. They are located under the back cover near the sides.
- As soon as the clips are released the back should slide off.

Step 3



- Remove last two 4.2 mm screws from the remaining back piece with a T5 Torx screwdriver.
- Once both screws are taken out, lift the rest of the backing out of the way.

To reassemble your device, follow these instructions in reverse order.