



# Motorola Xoom Wifi Display Assembly Replacement

This step-by-step replacement guide will help you teardown the Xoom to the display assembly and, in the process, shows you the steps for putting on a new one.

Written By: Andrew Mercier



## INTRODUCTION

As this replacement guide works on an internal component of the Xoom Wifi, completion of prior steps to remove external parts is necessary.



### TOOLS:

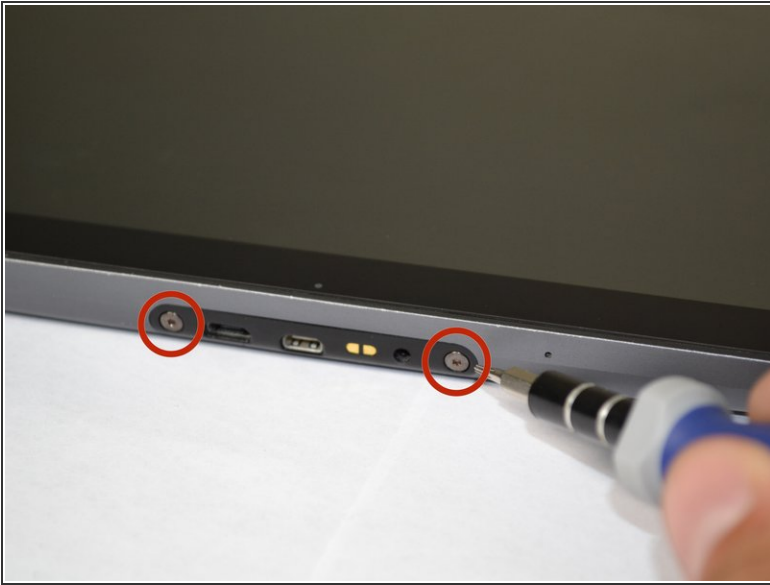
- [Spudger](#) (1)
- [iFixit Opening Tools](#) (1)
- [T5 Torx Screwdriver](#) (1)
- [T6 Torx Screwdriver](#) (1)



### PARTS:

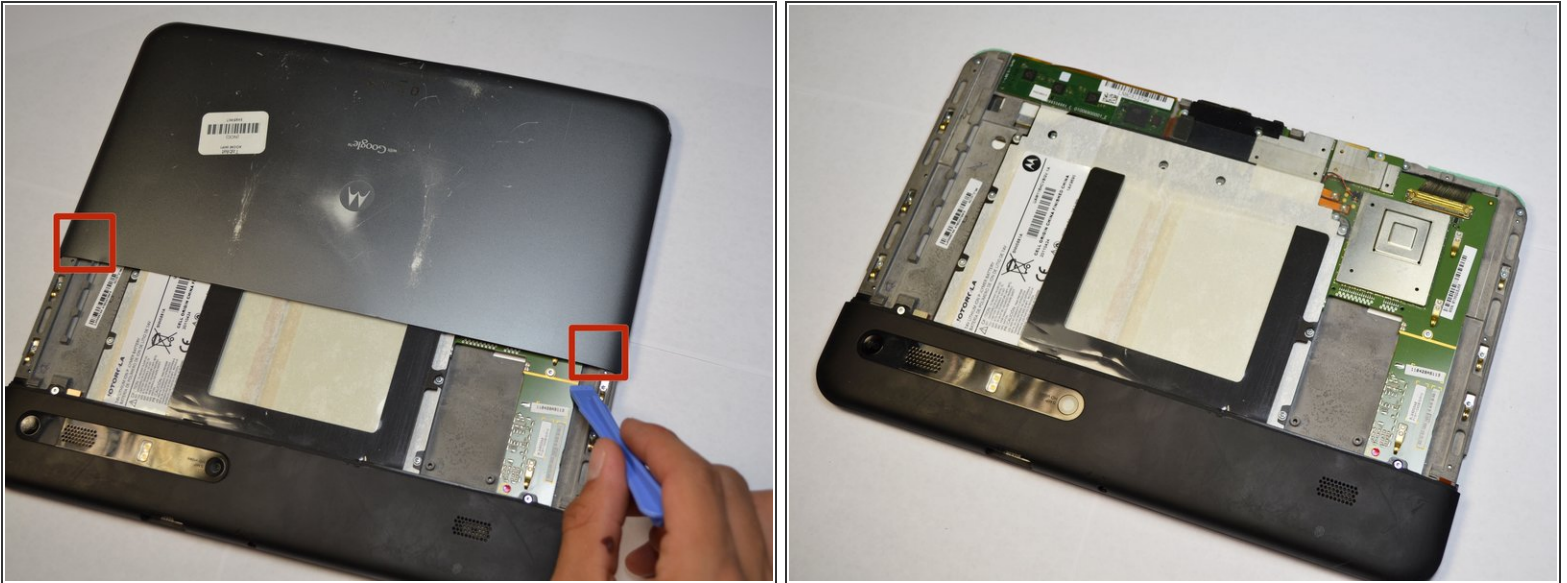
- [Motorola Xoom Display Assembly](#) (1)

## Step 1 — Back Cover Disassembly



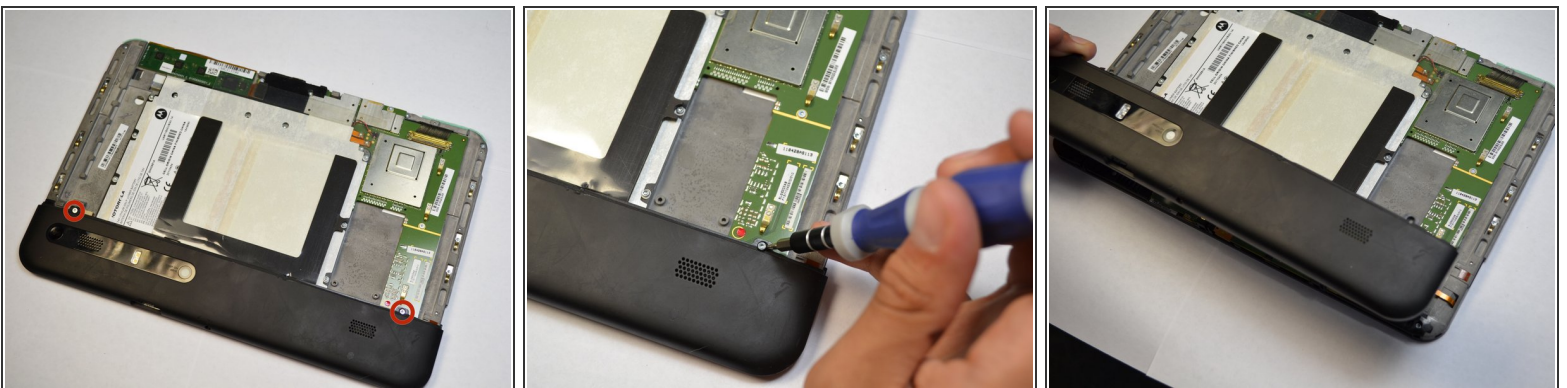
- There are two 6.6 mm screws that hold ports into place as well as the back panel. Remove these with a T5 Torx screwdriver.

## Step 2



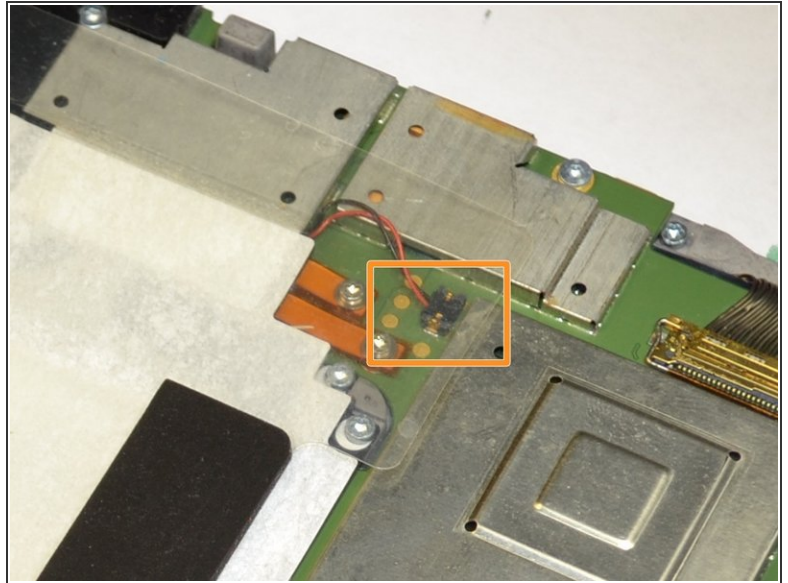
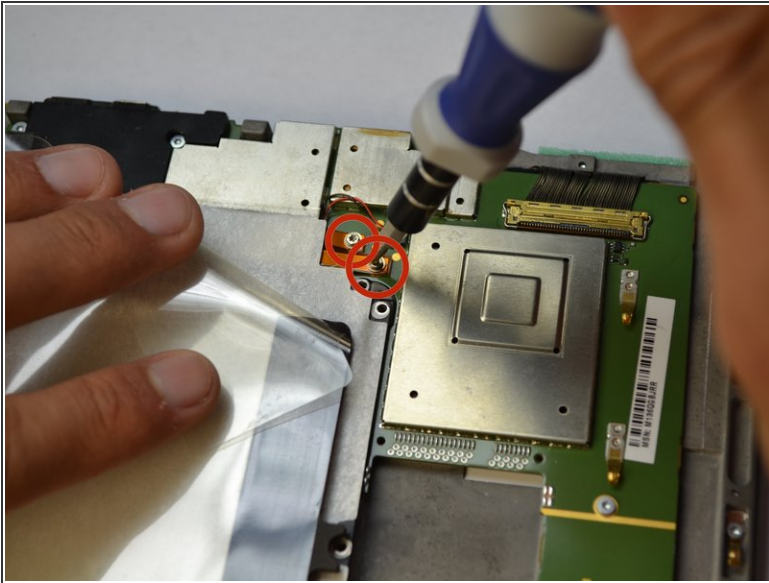
- Apply light pressure with hand and slide the back plate till it stops in this position.
- There is a flex clip on both sides that need to be pushed down in order for the plate to slide off completely. Use a plastic opening tool to release the flex clips. They are located under the back cover near the sides.
- As soon as the clips are released the back should slide off.

## Step 3



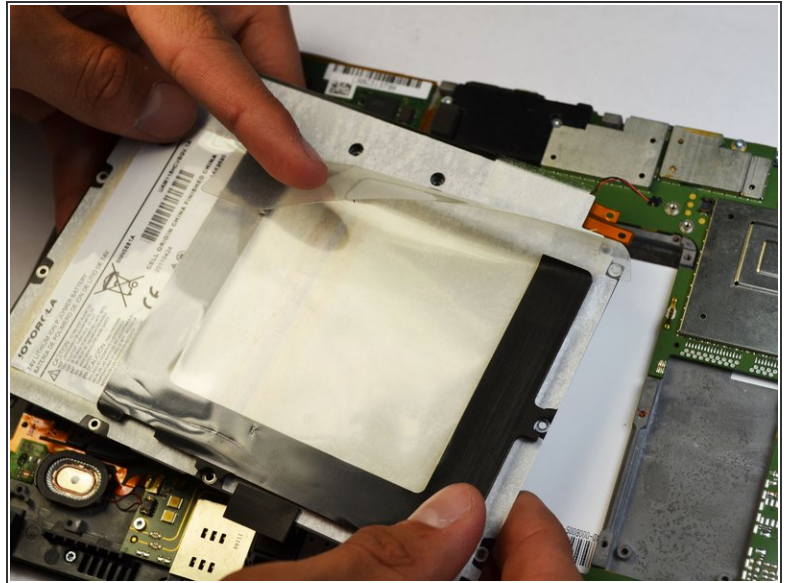
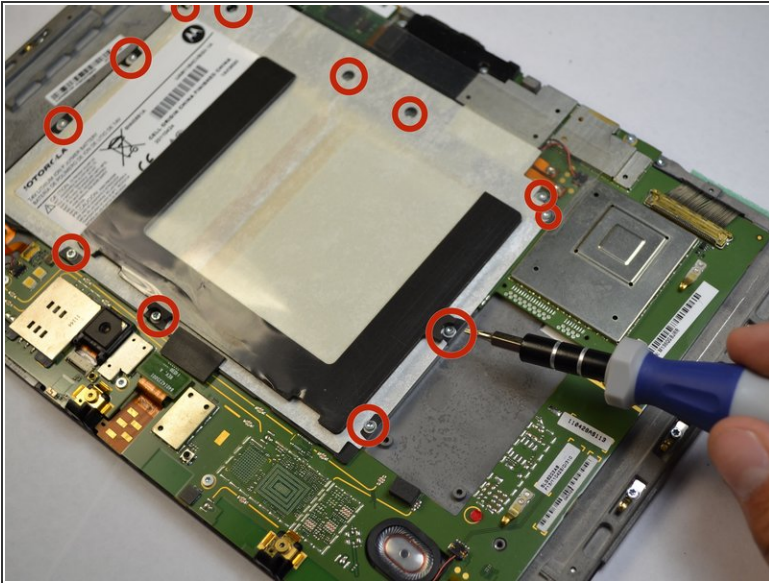
- Remove last two 4.2 mm screws from the remaining back piece with a T5 Torx screwdriver.
- Once both screws are taken out, lift the rest of the backing out of the way.

## Step 4 — Battery



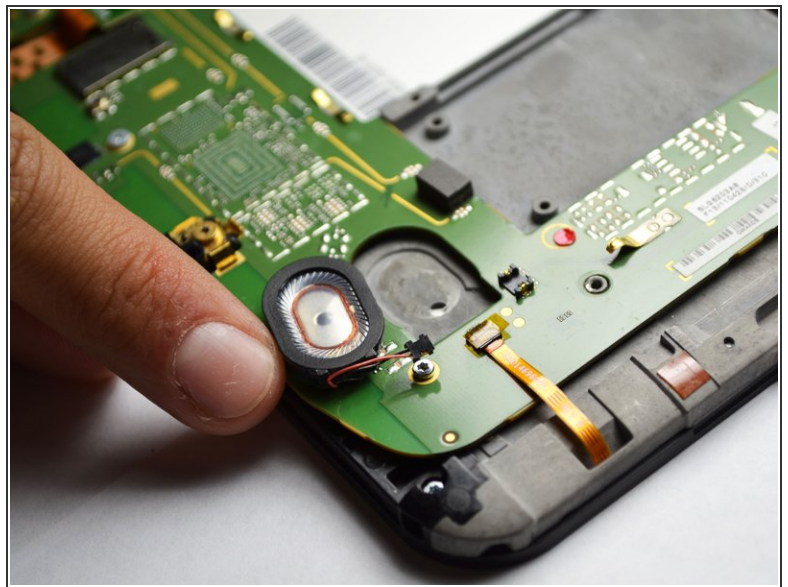
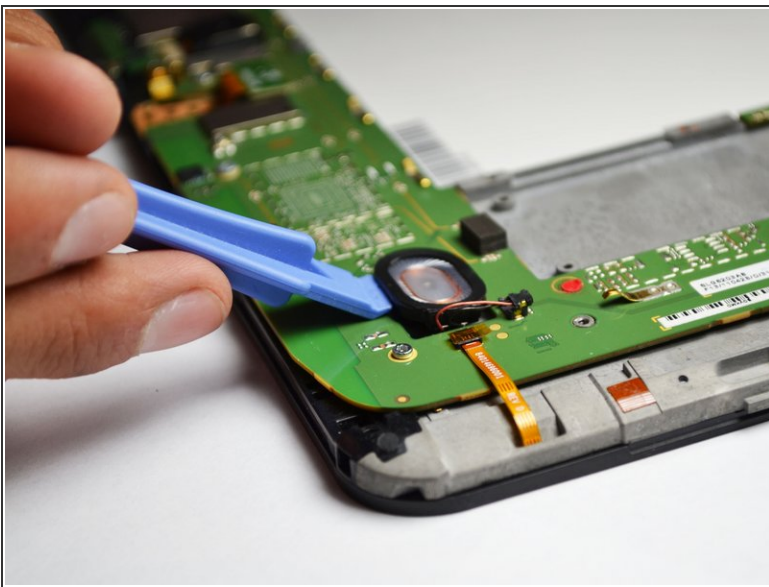
- Remove the two battery leads with a T-5 Torx screwdriver.
- Grab the red and black wires with your fingers and gently lift to disconnect black wire connector from the motherboard.

## Step 5



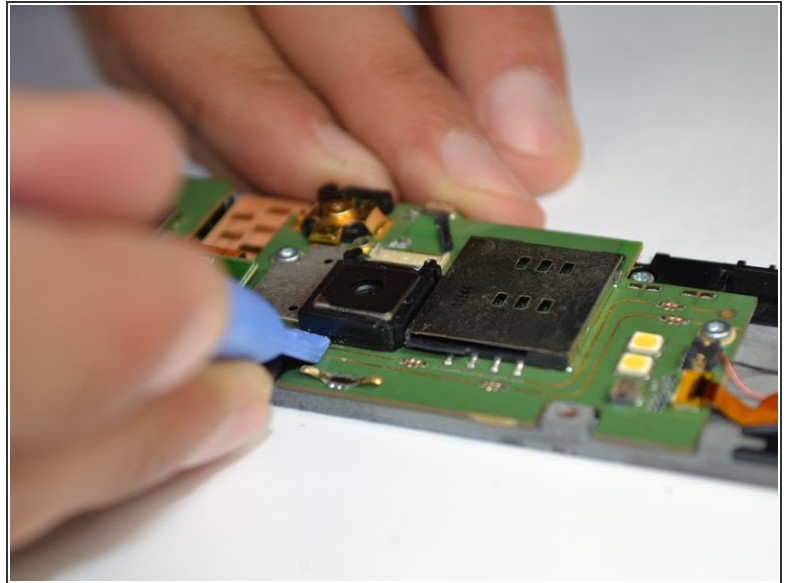
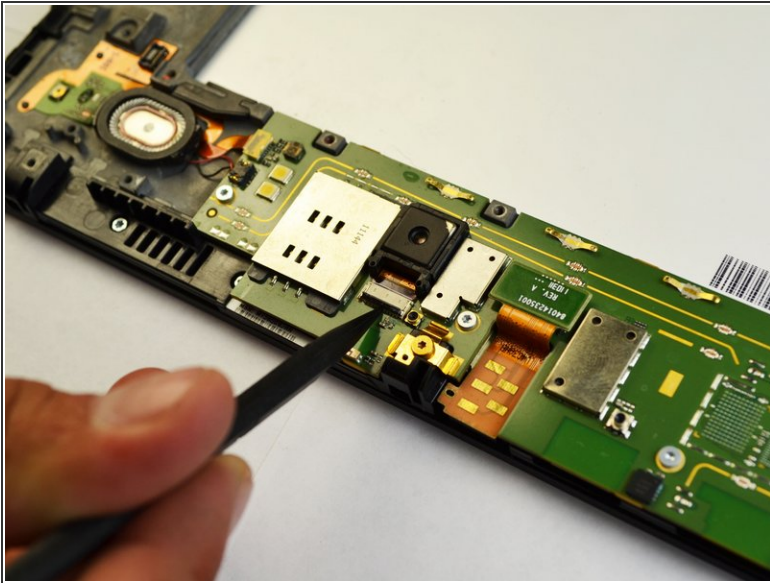
- All that holds the battery in are twelve screws. Remove them with a T-6 Torx screwdriver.
- The battery should lift out easily.

## Step 6 — Speakers



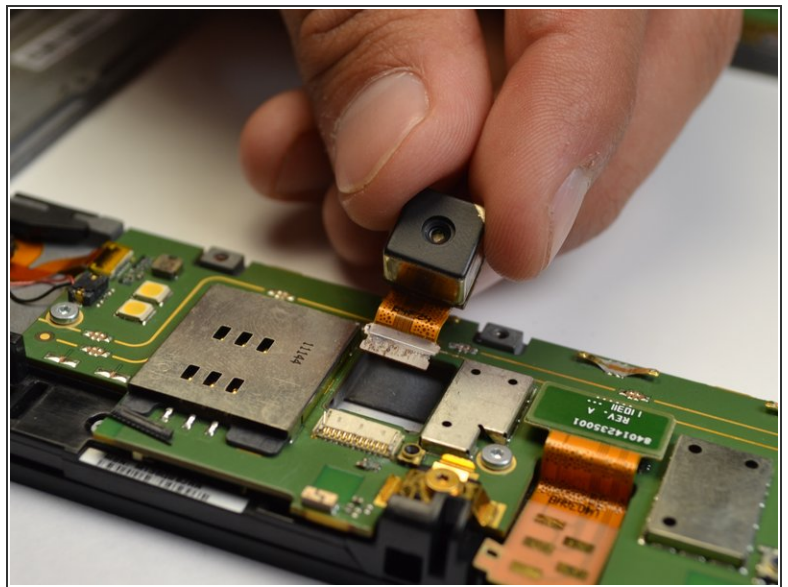
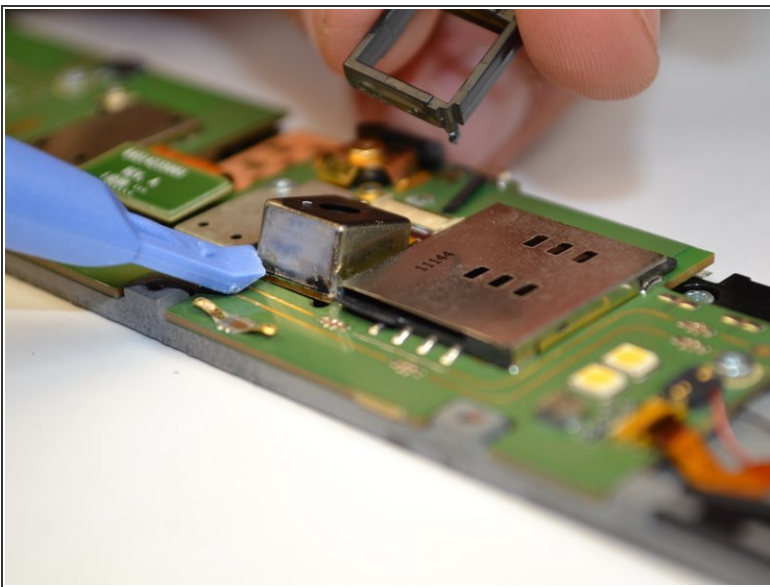
- Use a plastic opening tool to pop out the speaker. Make sure to carefully pull off the wire as well.
- Replace speaker if necessary.

## Step 7 — Back-Facing Camera



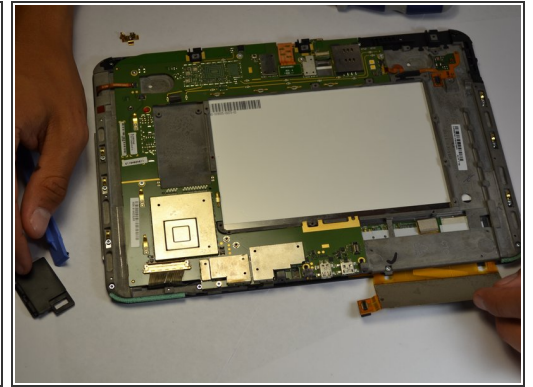
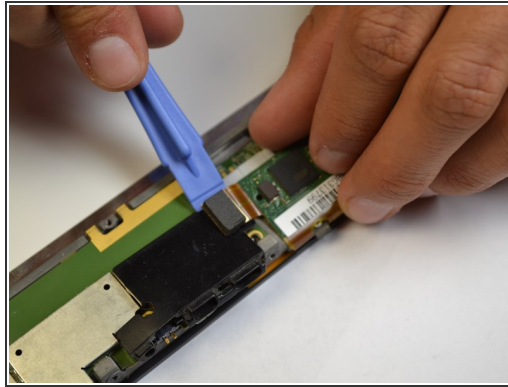
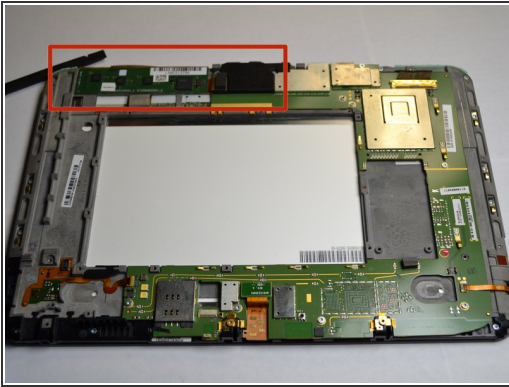
- Use a spudger or a fine tip to lift the black tab to a vertical position.
- A spudger is needed to remove the plastic border around the camera.

## Step 8



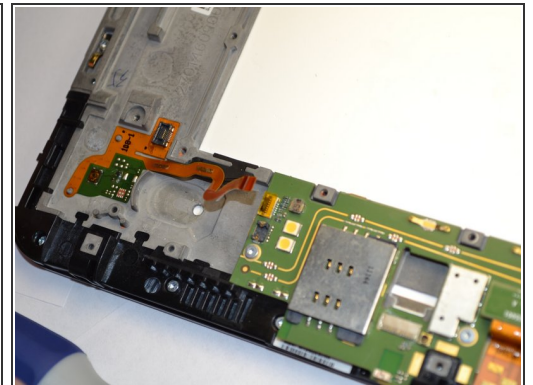
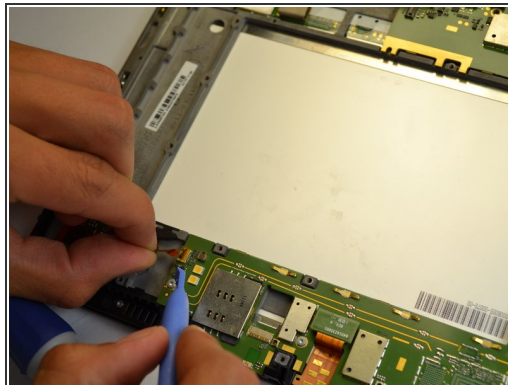
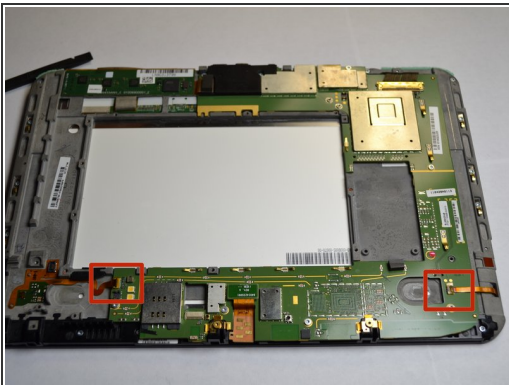
- When lifting the camera out, be sure to pull the orange ribbon cable as well.

## Step 9 — Motherboard



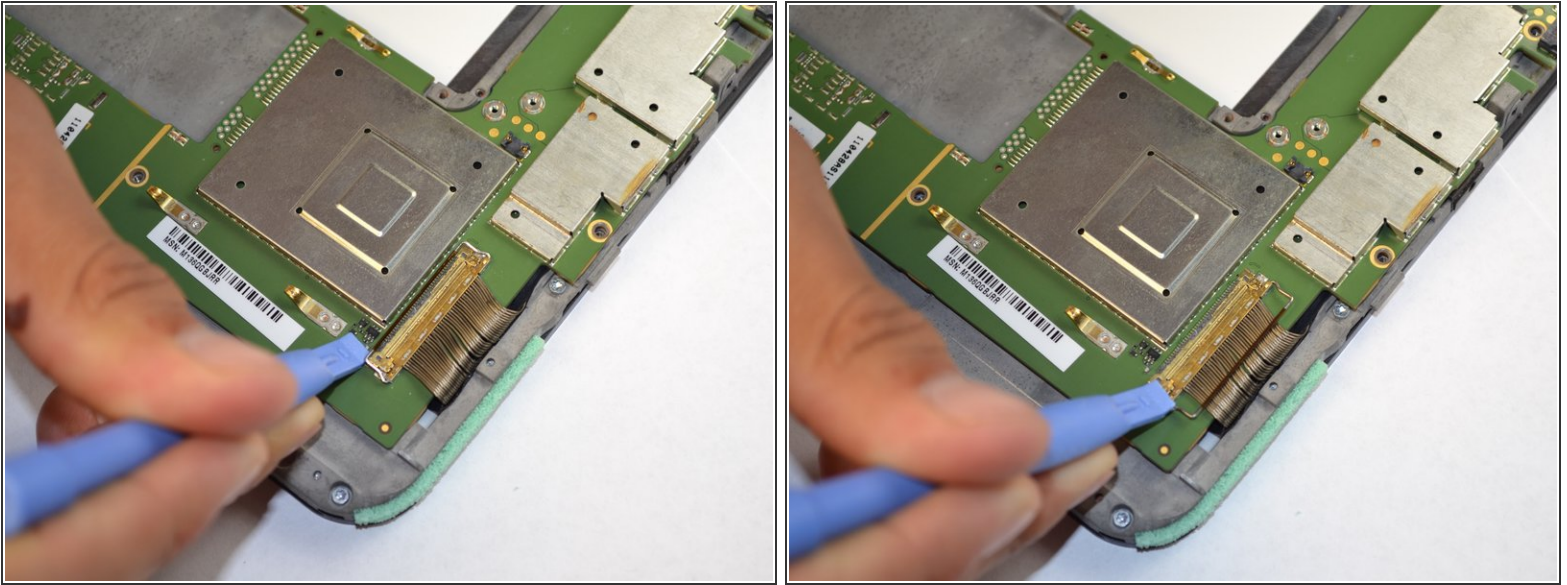
- Take a plastic opening tool and carefully pry off the touch screen controller connection.
- Be careful with the black cover under the connection.

## Step 10



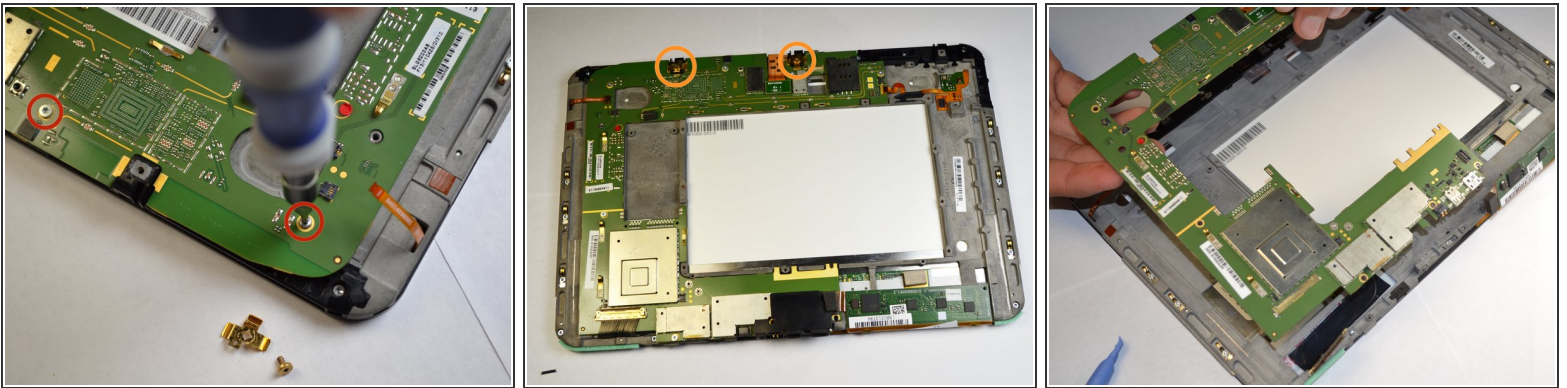
- There are two relay wires that must be disconnected.
- Pull both relay wires out of their connection ports.
- ⓘ Make sure to flip up the small black tab before you pull out the wire.

## Step 11



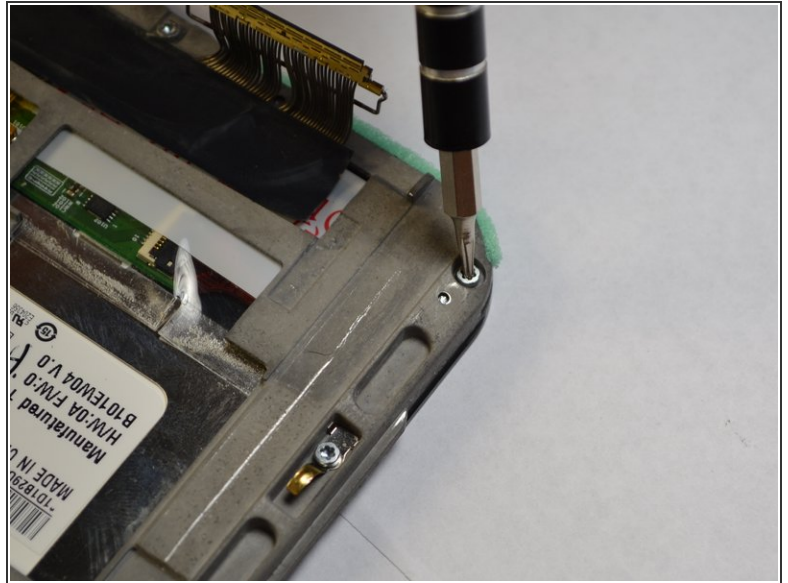
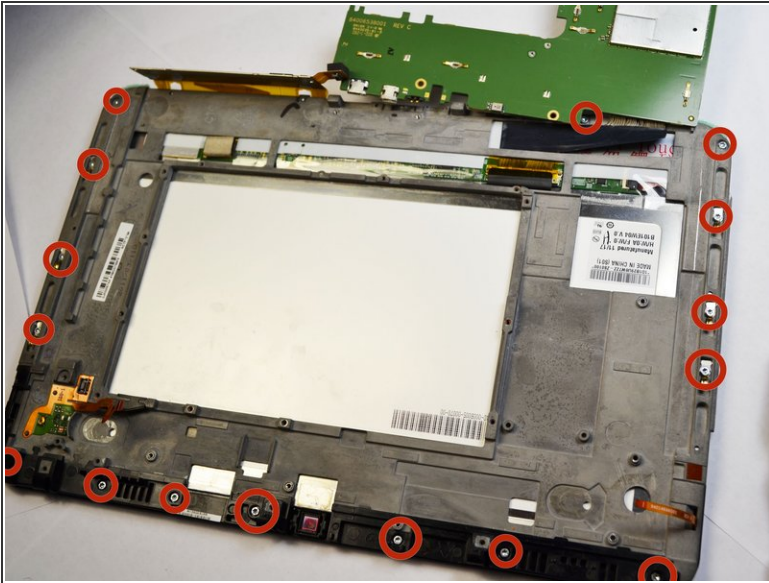
- Using a plastic opener, lift the metal bar clamping the wire harness to the motherboard.

## Step 12



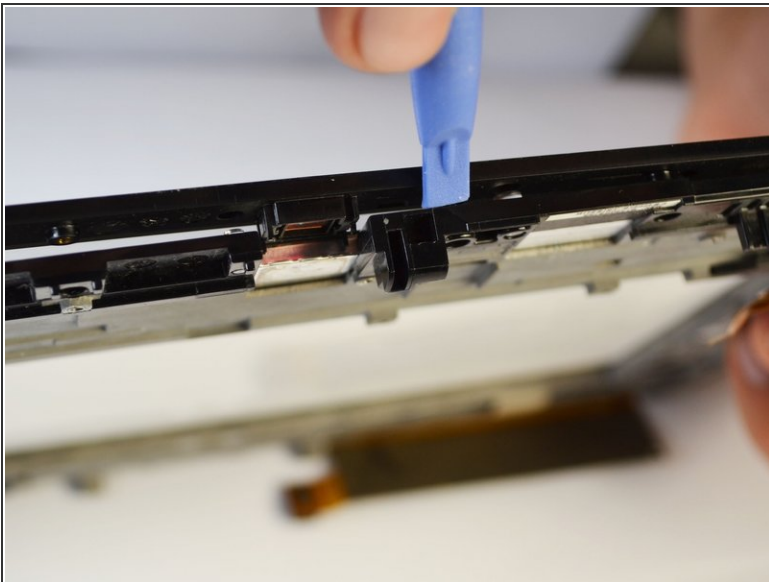
- There are eight 3.5mm screws that hold the motherboard in. Use a T-5 Torx screwdriver to take the screws loose. These screws are outlined in a gold color on the motherboard.
- Two gold colored screws with brackets are located in the orange circles. A T-5 Torx screwdriver is needed to take these 3.1mm screws.
- Motherboard should lift out easily and completely.

## Step 13 — Display Assembly



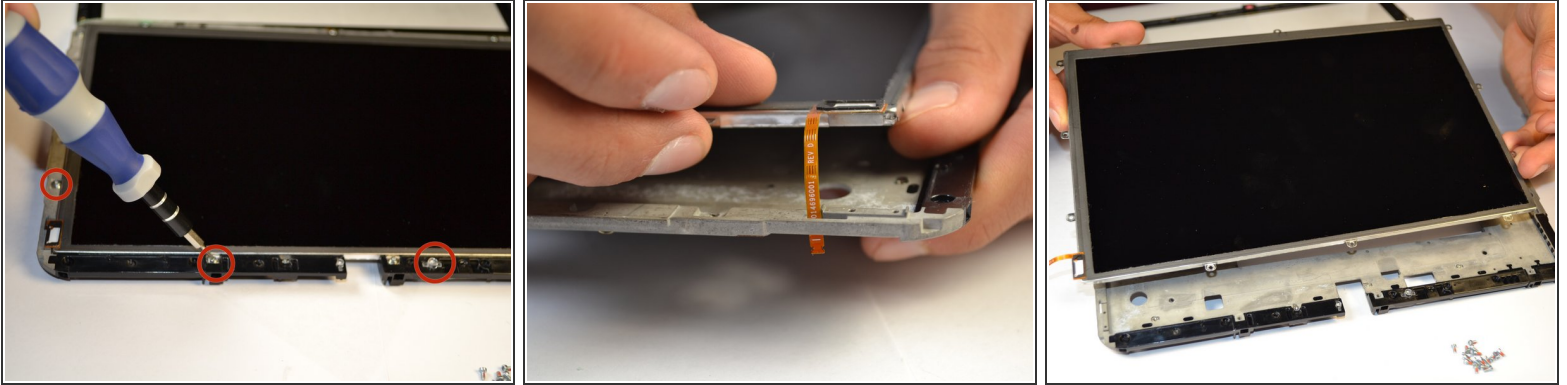
- Using the T-6 Torx screwdriver, unscrew the 17 4mm screws along the edge of the screen frame.

## Step 14



- Take the small plastic opening tool and separate the front glass from the screen frame.
- Unfold the glass and the frame flat on the table.

## Step 15



- Using the T-5 Torx screwdriver, unscrew the 12 4.1mm screws along the edge of the screen.
- Pull ribbon wire out of slot in the frame to pull the screen off of the frame.

To reassemble your device, follow these instructions in reverse order.