



Written By: William Prins



## INTRODUCTION

As this replacement guide works on an internal component of the Xoom Wifi, completion of prior steps to remove external parts is necessary.



### TOOLS:

- [T5 Torx Screwdriver](#) (1)
- [iFixit Opening Tools](#) (1)
- [T6 Torx Screwdriver](#) (1)
- [Spudger](#) (1)



### PARTS:

- [Motorola Xoom Display](#) (1)

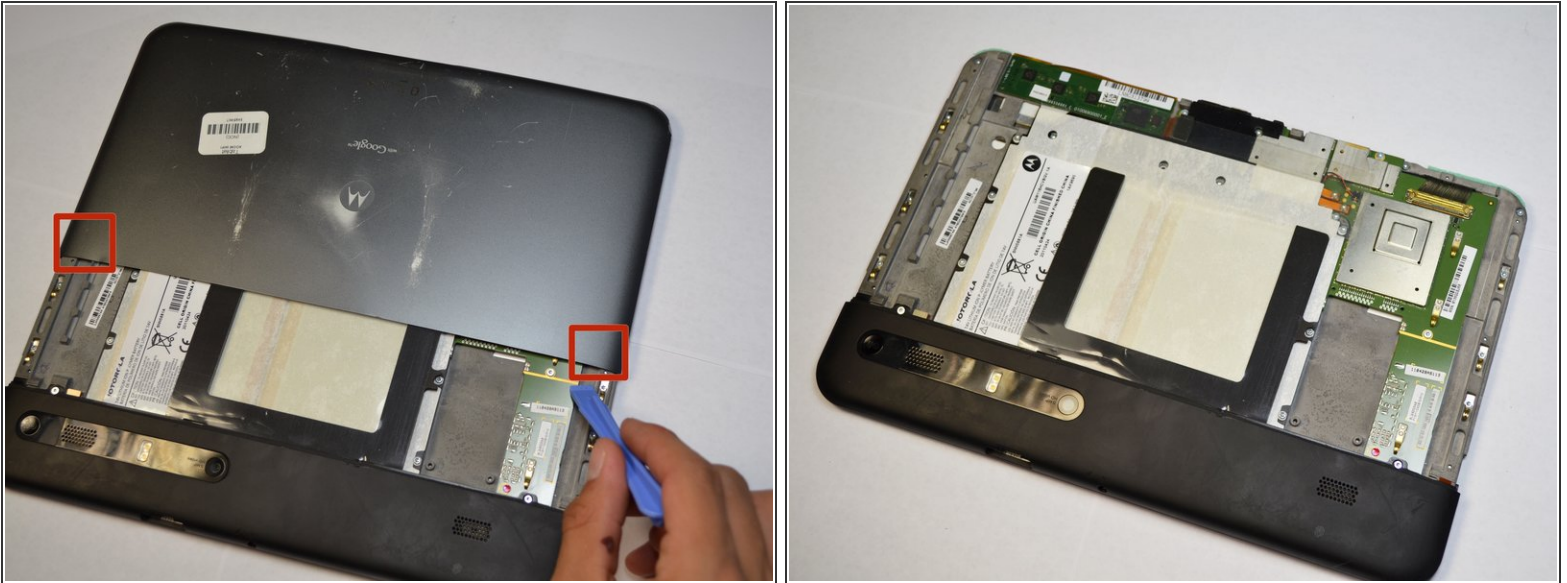
## Step 1 — Back Cover Disassembly



- There are two 6.6 mm screws that hold ports into place as well as the back panel. Remove these with a T5 Torx screwdriver.

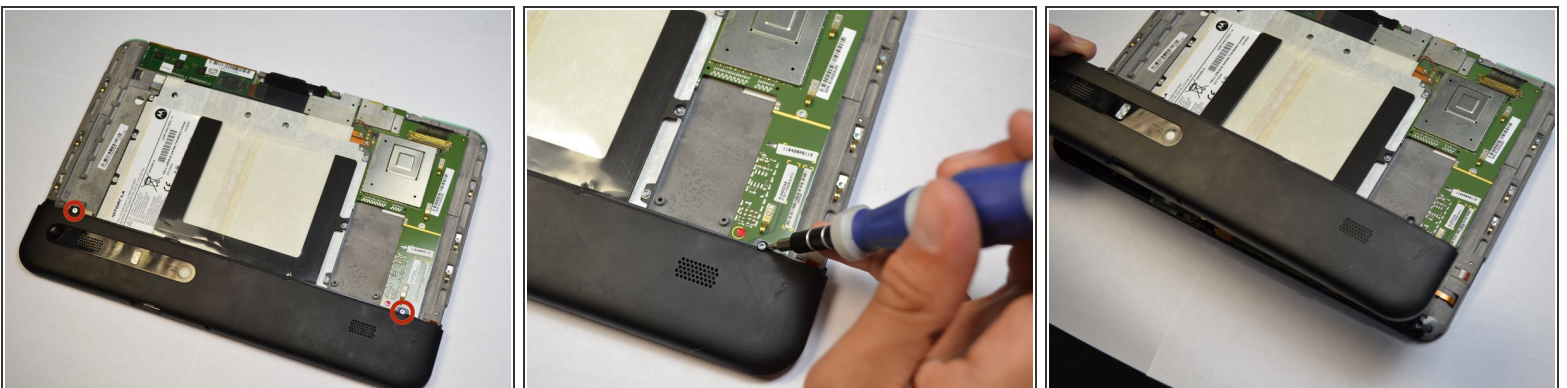


## Step 2



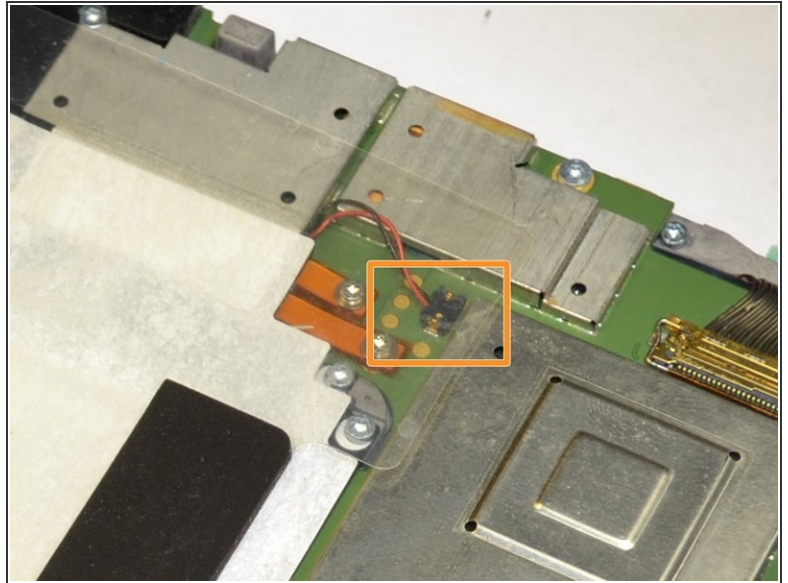
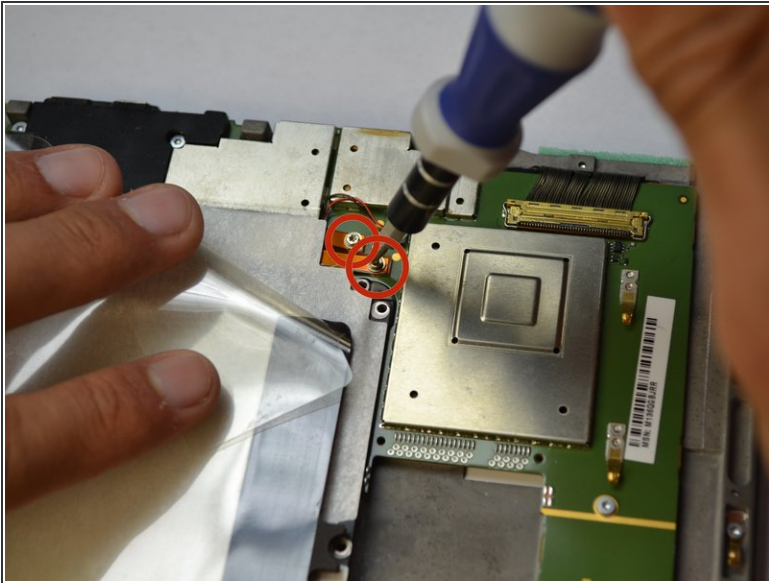
- Apply light pressure with hand and slide the back plate till it stops in this position.
- There is a flex clip on both sides that need to be pushed down in order for the plate to slide off completely. Use a plastic opening tool to release the flex clips. They are located under the back cover near the sides.
- As soon as the clips are released the back should slide off.

## Step 3



- Remove last two 4.2 mm screws from the remaining back piece with a T5 Torx screwdriver.
- Once both screws are taken out, lift the rest of the backing out of the way.

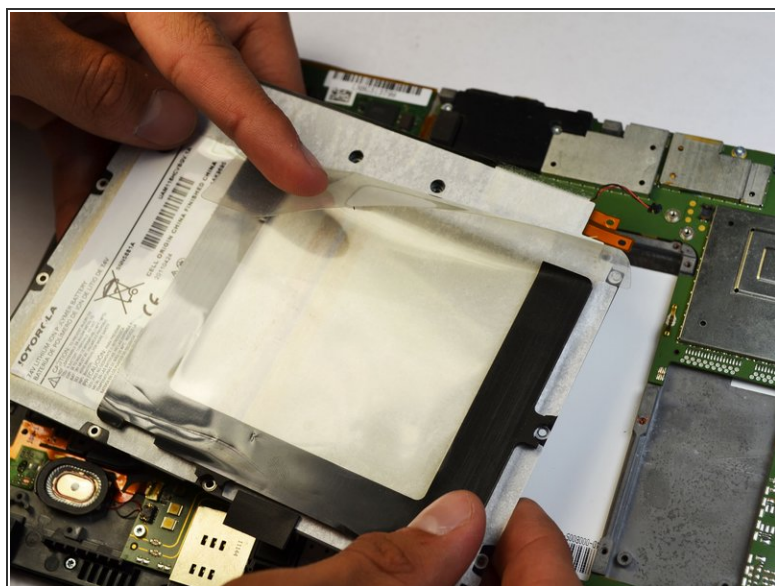
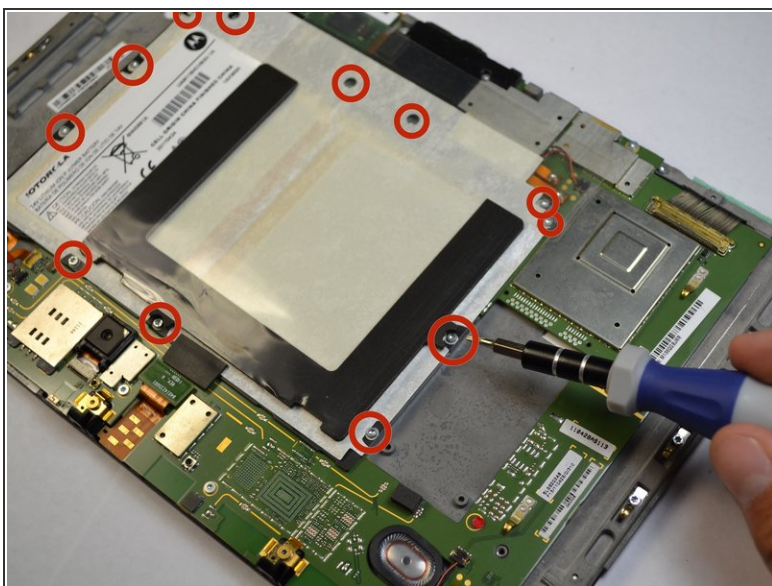
## Step 4 — Battery



- Remove the two battery leads with a T-5 Torx screwdriver.
- Grab the red and black wires with your fingers and gently lift to disconnect black wire connector from the motherboard.

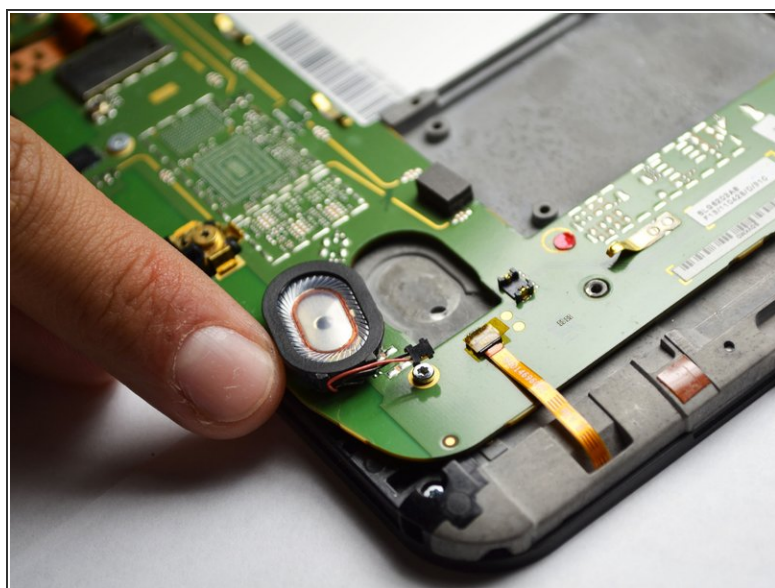
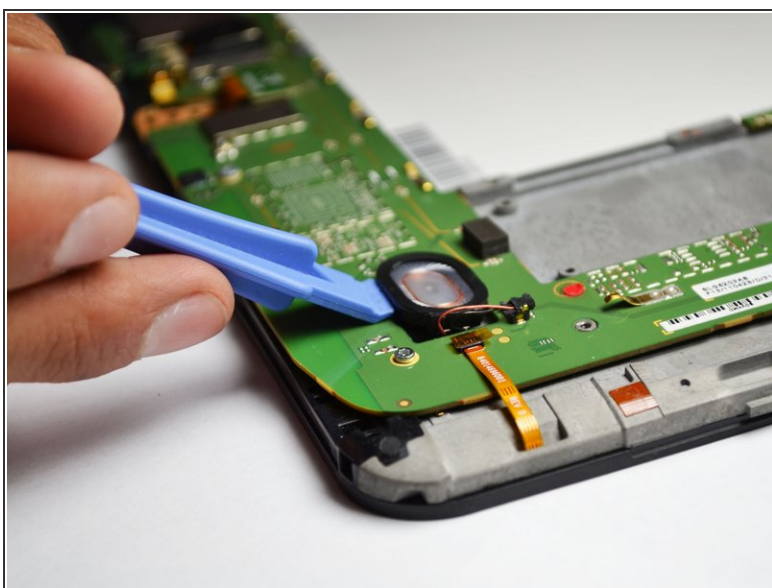


## Step 5



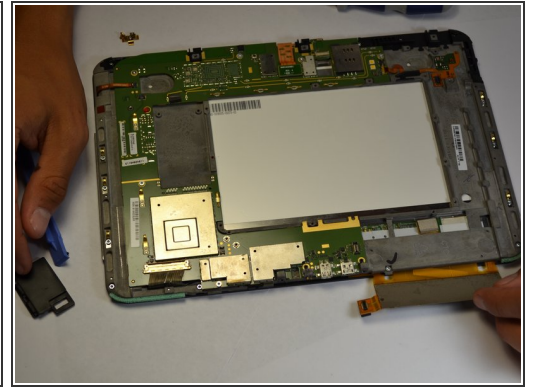
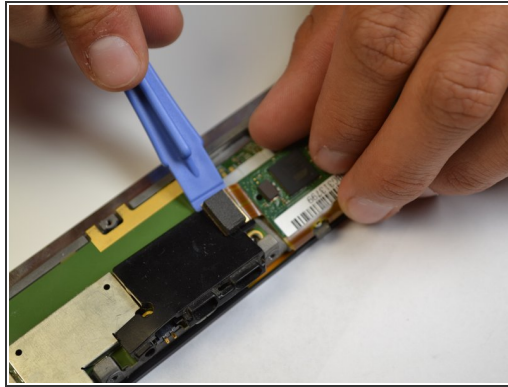
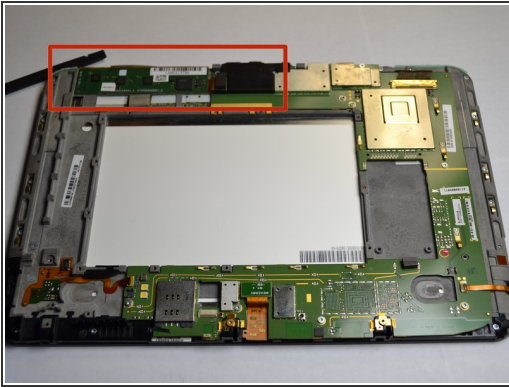
- All that holds the battery in are twelve screws. Remove them with a T-6 Torx screwdriver.
- The battery should lift out easily.

## Step 6 — Speakers



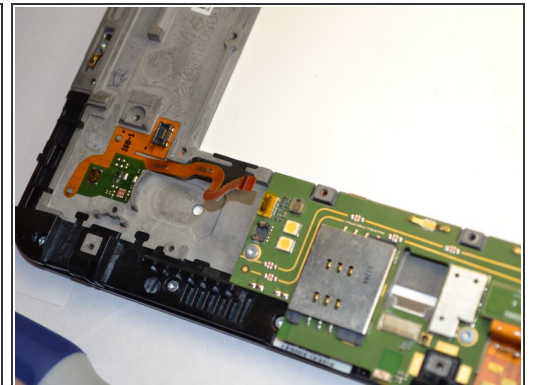
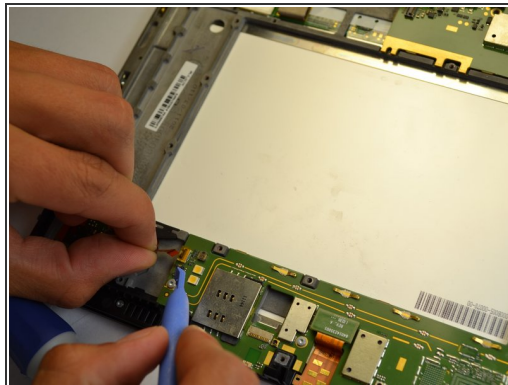
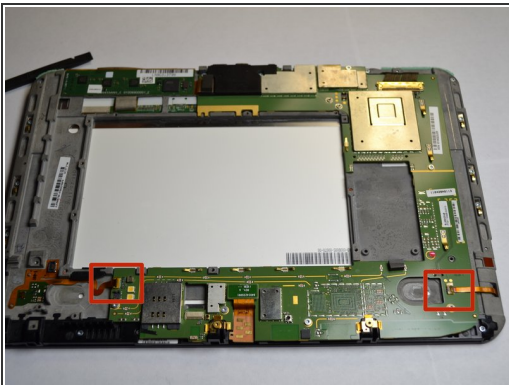
- Use a plastic opening tool to pop out the speaker. Make sure to carefully pull off the wire as well.
- Replace speaker if necessary.

## Step 7 — Motherboard



- Take a plastic opening tool and carefully pry off the touch screen controller connection.
- Be careful with the black cover under the connection.

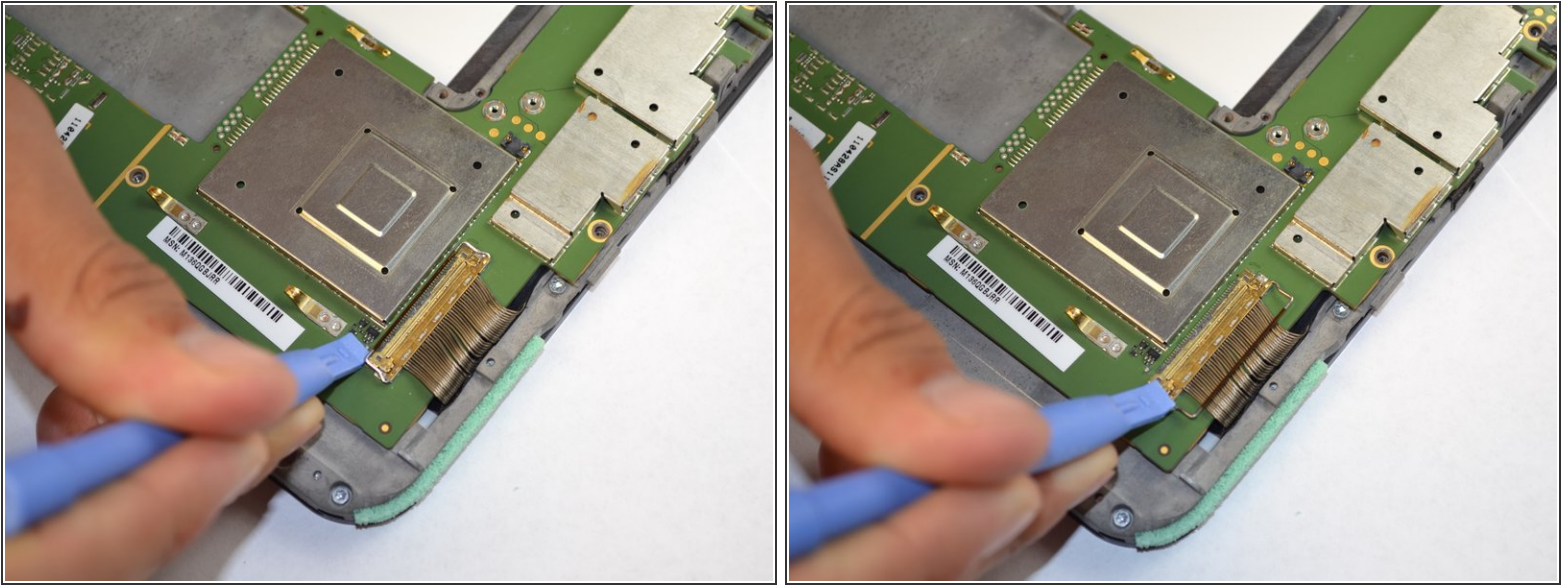
## Step 8



- There are two relay wires that must be disconnected.
- Pull both relay wires out of their connection ports.
- ⓘ Make sure to flip up the small black tab before you pull out the wire.

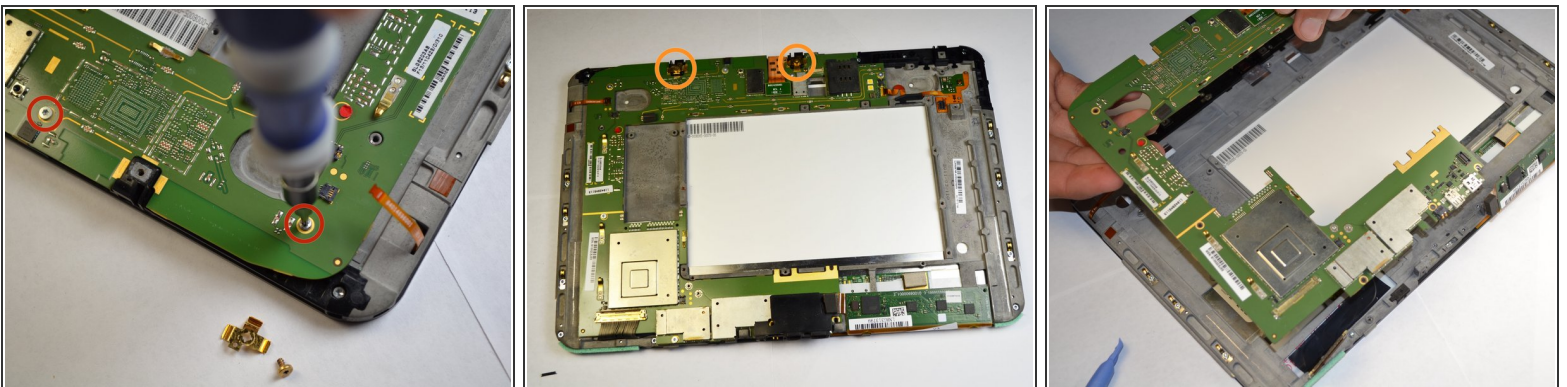


## Step 9



- Using a plastic opener, lift the metal bar clamping the wire harness to the motherboard.

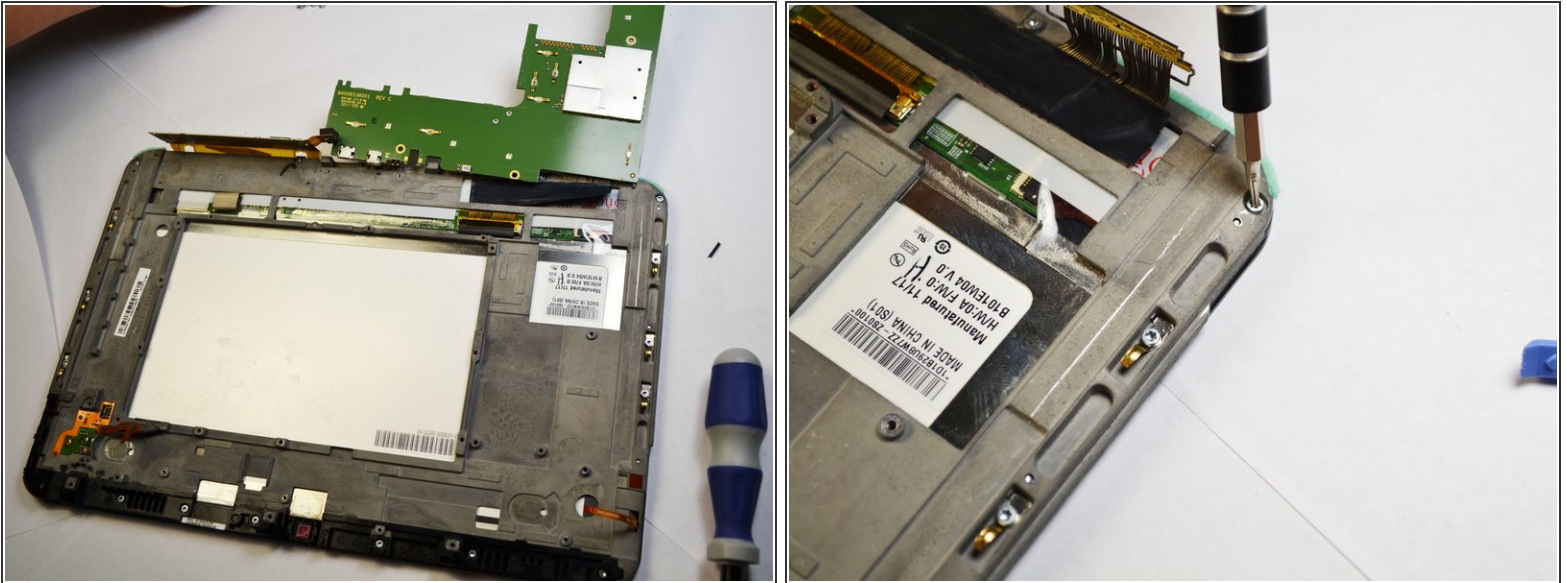
## Step 10



- There are eight 3.5mm screws that hold the motherboard in. Use a T-5 Torx screwdriver to take the screws loose. These screws are outlined in a gold color on the motherboard.
- Two gold colored screws with brackets are located in the orange circles. A T-5 Torx screwdriver is needed to take these 3.1mm screws.
- Motherboard should lift out easily and completely.

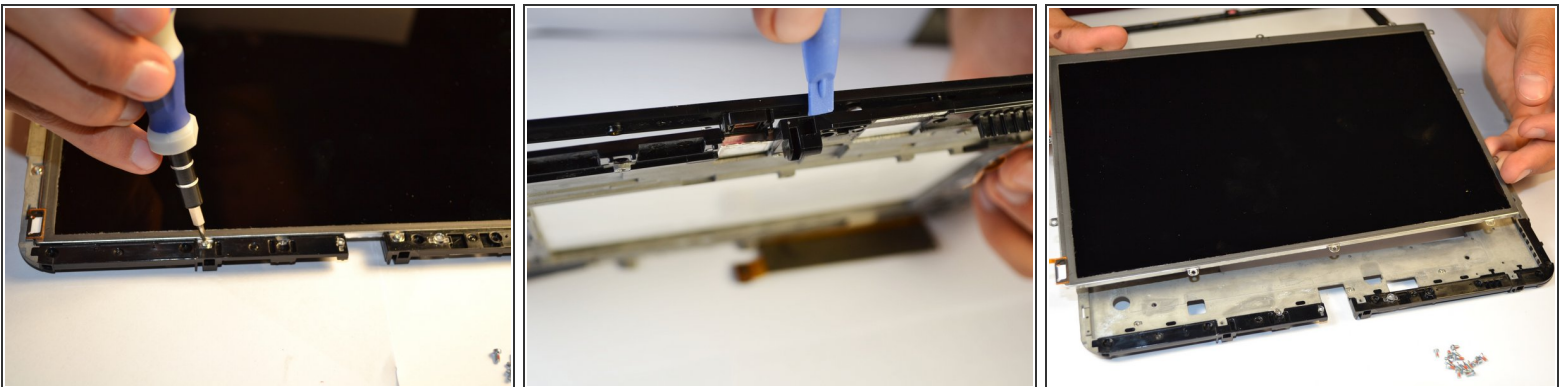


## Step 11 — Display



- Use a T-6 screw driver to take out 17-4mm screws. They are located around the perimeter of the tablet.
- Take the display out of the screen and the back panel.

## Step 12



- Flip the display so it is facing up. There are screws around the outer edge of the display.
- A T-5 screwdriver will take the 12-4.1mm screws out.
- Use a plastic opening tool to carefully split the display case open. The display should come free.

To reassemble your device, follow these instructions in reverse order.