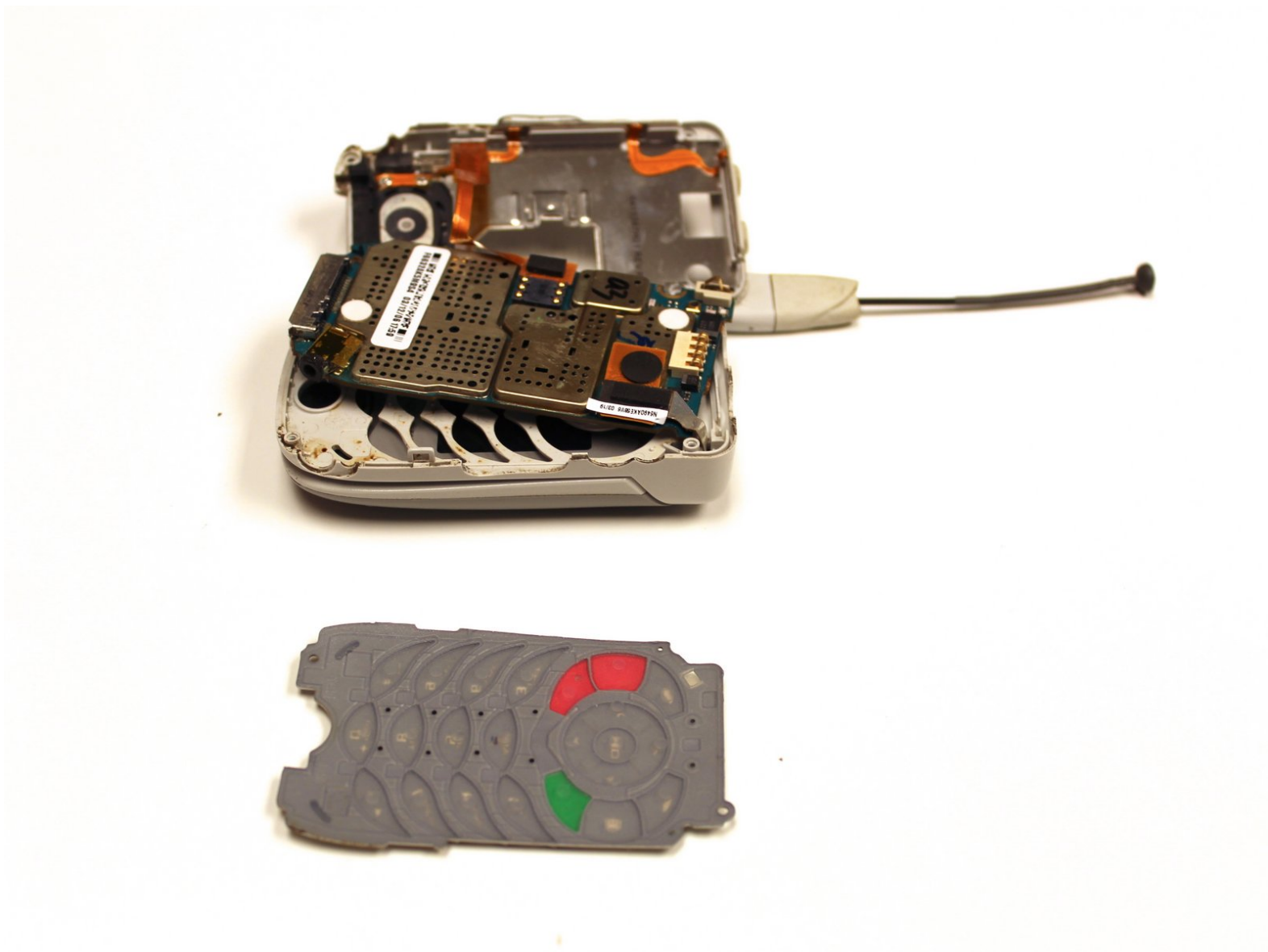




Motorola i450 Boost Mobile Keypad Replacement

This guide provides instructions for removal and replacement of the keypad.

Written By: Garrison Stevens



INTRODUCTION

The keypad protects the phone's interior while enabling the user to input commands into the phone.



TOOLS:

- [Anti-Static Project Tray](#) (1)
 - [Spudger](#) (1)
 - [T5 Torx Screwdriver](#) (1)
 - [T6 Torx Screwdriver](#) (1)
-

Step 1 — Back Cover



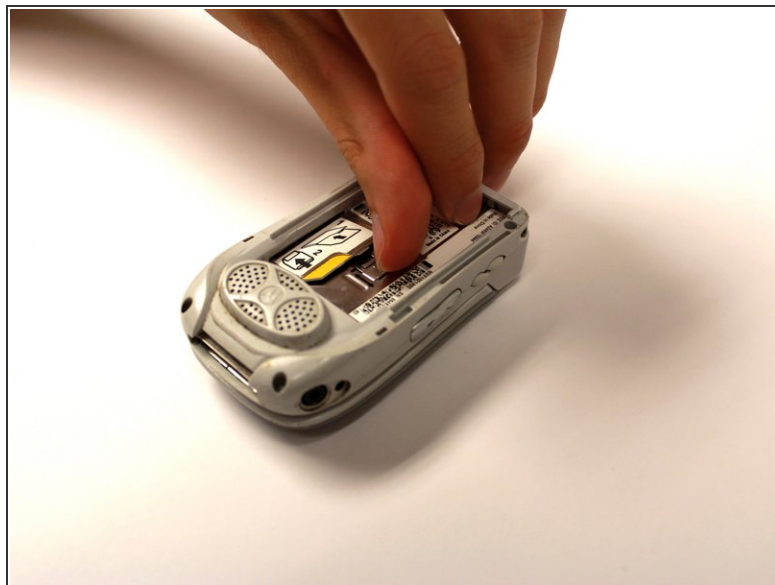
- Place the phone on a flat surface with the front facing down.
- Insert your finger under the gray plastic cover at the bottom end of the phone.
- Lift the cover off the phone.

Step 2 — Battery



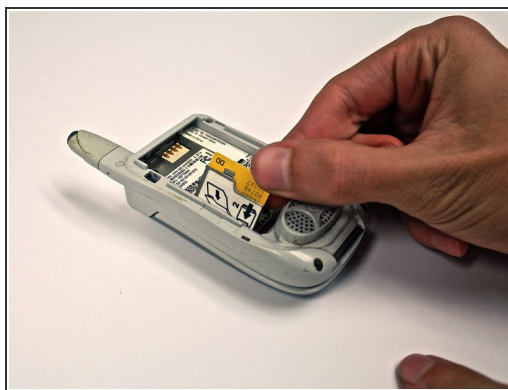
- Place your thumb in the notch in the lower left corner of the battery compartment.
- Lift the battery up and away from the phone.
- Remove the battery.

Step 3 — SIM Card



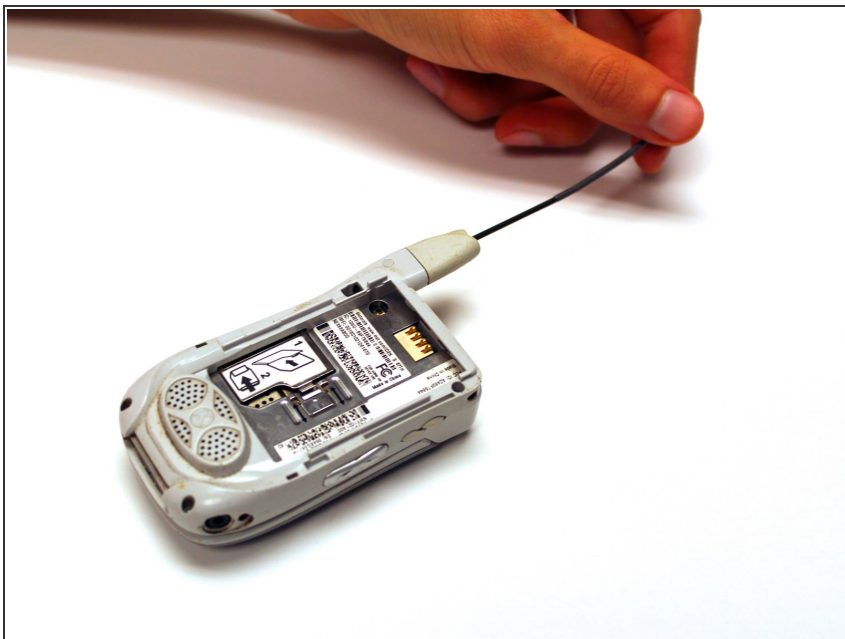
- Locate the metal slider that holds the SIM card in place.
- Push the slider away from the metal flap which contains the SIM card. The flap will pop up.

Step 4



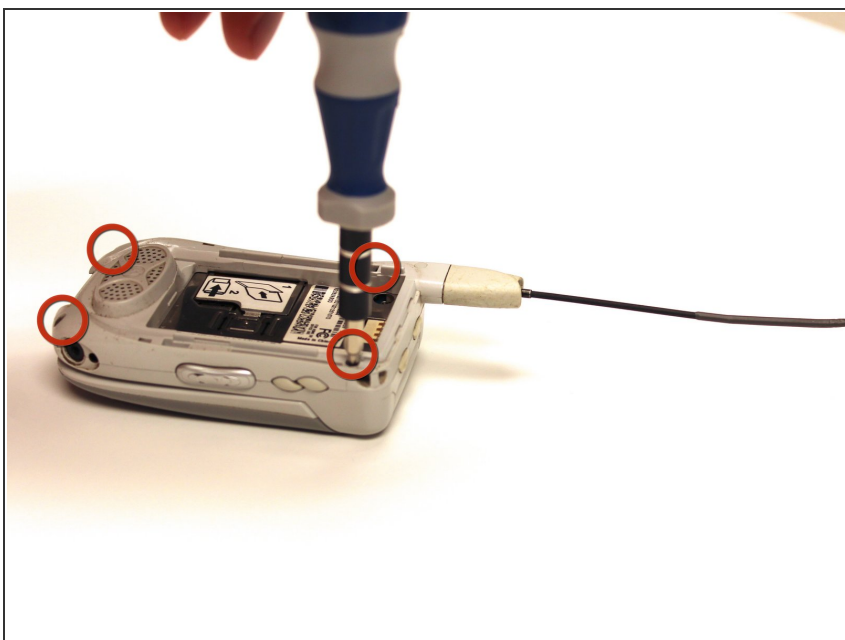
- Lift the metal flap to gain access to the bottom of the SIM card.
- Remove the SIM card by sliding it out parallel to the bottom of the flap.

Step 5 — Circuit Board



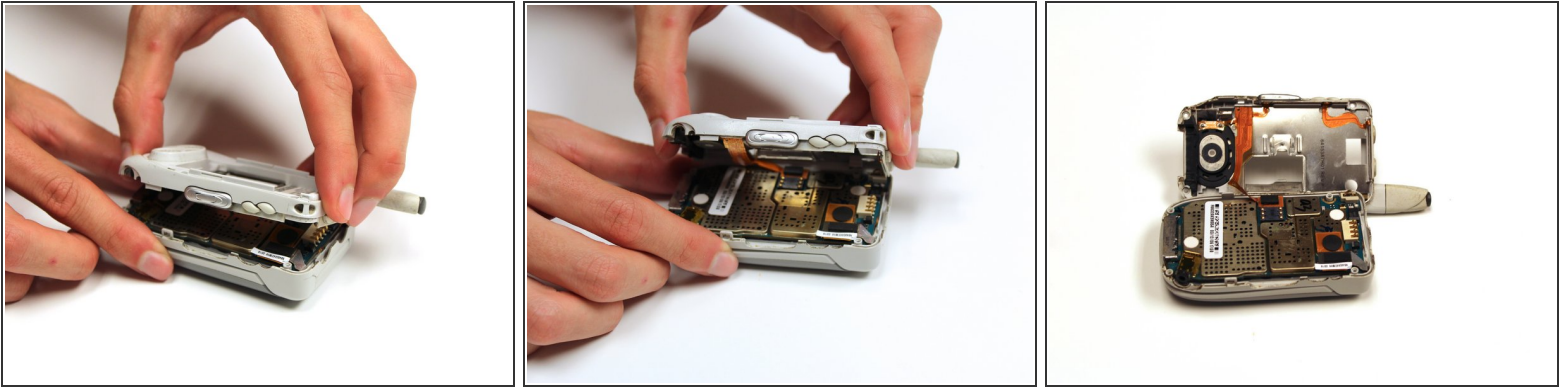
- Extend the antenna.

Step 6




- Remove the four 4.8 mm Torx T6 screws from the corners of the back of the phone.
- ⓘ If the antenna is not fully extended, the top left screw will not be accessible.

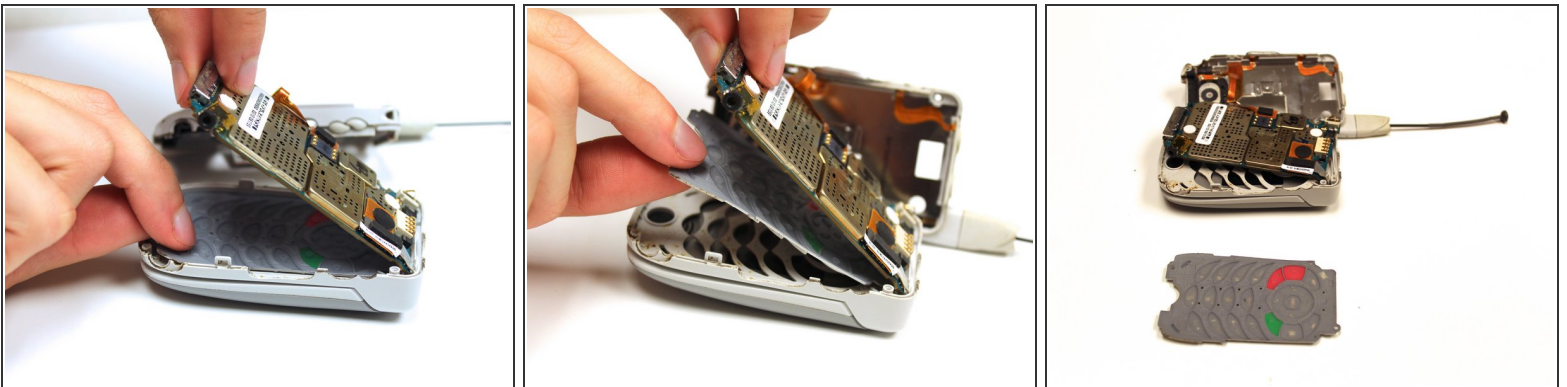
Step 7




- Gently lift off the back half of the phone and set to the side.

 Permanent circuit connections prevent the cover from completely separating from the phone. Do not attempt to disconnect these circuits.

Step 8 — Keypad



- Gently lift the end of the circuit board farthest from the phone hinge.

 The circuit board is permanently connected to the phone casing at the end nearest to the hinge.

- Grasp the keypad at the bottom of the phone, raise it, and pull it away.

To reassemble your device, follow these instructions in reverse order.