



Motorola i450 Boost Mobile SIM Card Replacement

This guide provides instructions for removal and replacement of the SIM card.

Written By: Garrison Stevens



INTRODUCTION

The SIM card stores various information, including contact list and recent call data.

TOOLS:

- [Spudger](#) (1)
-

Step 1 — Back Cover



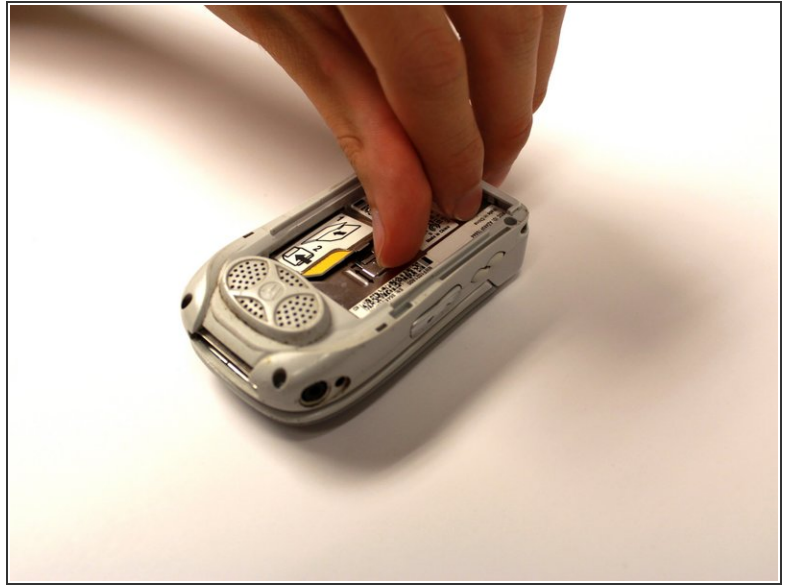
- Place the phone on a flat surface with the front facing down.
- Insert your finger under the gray plastic cover at the bottom end of the phone.
- Lift the cover off the phone.

Step 2 — Battery



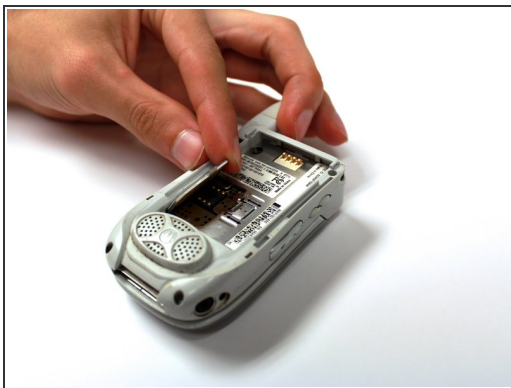
- Place your thumb in the notch in the lower left corner of the battery compartment.
- Lift the battery up and away from the phone.
- Remove the battery.

Step 3 — SIM Card



- Locate the metal slider that holds the SIM card in place.
- Push the slider away from the metal flap which contains the SIM card. The flap will pop up.

Step 4



- Lift the metal flap to gain access to the bottom of the SIM card.
- Remove the SIM card by sliding it out parallel to the bottom of the flap.

To reassemble your device, follow these instructions in reverse order.