



Motorola i450 Boost Mobile Teardown

This guide will allow the user to disassemble the Motorola i450 Boost Mobile.

Written By: Nathan Heavner



INTRODUCTION

To gain access to any replaceable part, at least some of the disassembly outlined in this guide is required.



TOOLS:

- [Anti-Static Project Tray](#) (1)
 - [Spudger](#) (1)
 - [T5 Torx Screwdriver](#) (1)
 - [T6 Torx Screwdriver](#) (1)
-

Step 1 — Antenna




- Place the phone on a flat surface with the front facing down and the antenna fully extended.
- Use a spudger to remove the circular rubber cover from the base of the antenna.
- Remove the 3.2 mm Torx T5 screw located under the rubber cover.

Step 2



- Remove the antenna by grasping from the white plastic piece just below the antenna and pulling away from the phone.

 Do not grasp the black antenna piece to pull it out. Doing so may damage it.

Step 3 — Back Cover



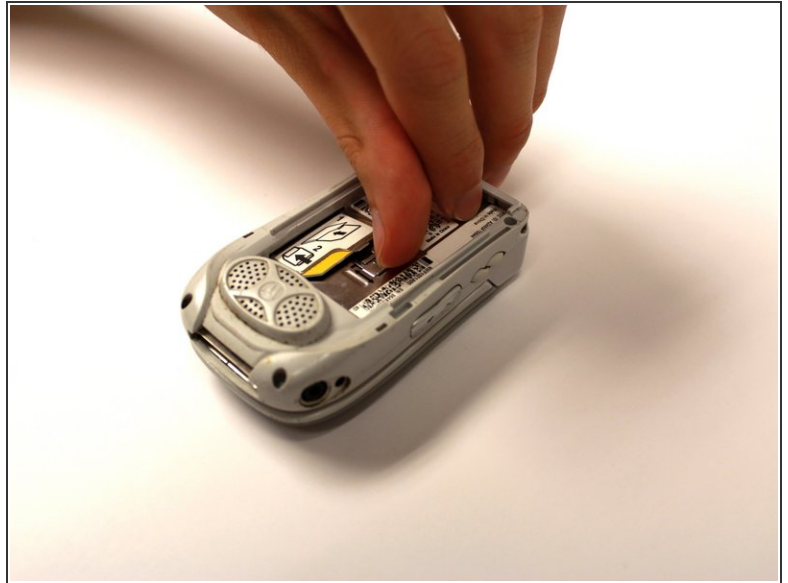
- Place the phone on a flat surface with the front facing down.
- Insert your finger under the gray plastic cover at the bottom end of the phone.
- Lift the cover off the phone.

Step 4 — Battery



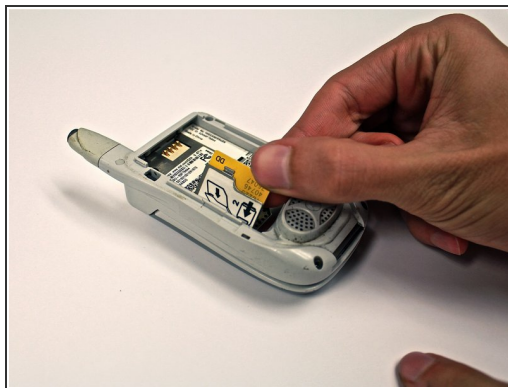
- Place your thumb in the notch in the lower left corner of the battery compartment.
- Lift the battery up and away from the phone.
- Remove the battery.

Step 5 — SIM Card



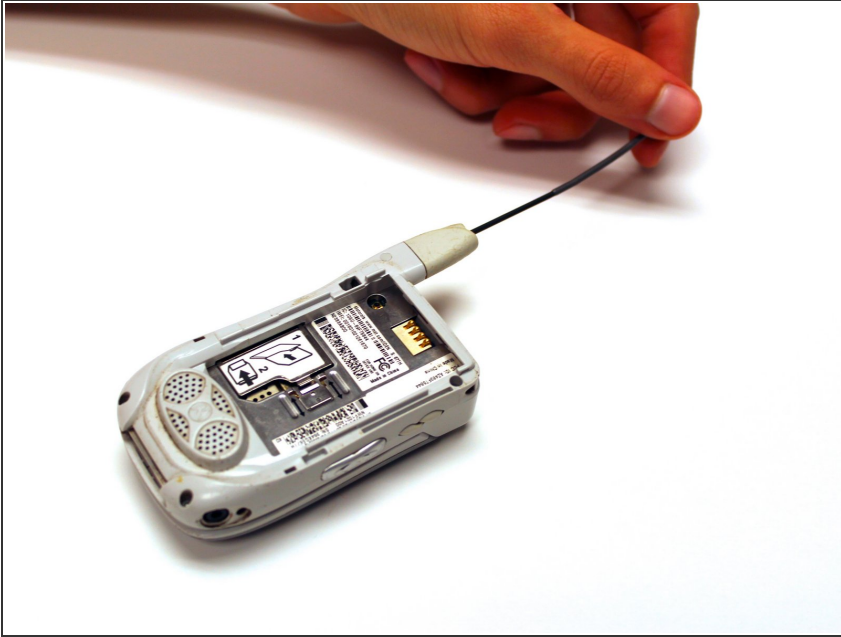
- Locate the metal slider that holds the SIM card in place.
- Push the slider away from the metal flap which contains the SIM card. The flap will pop up.

Step 6



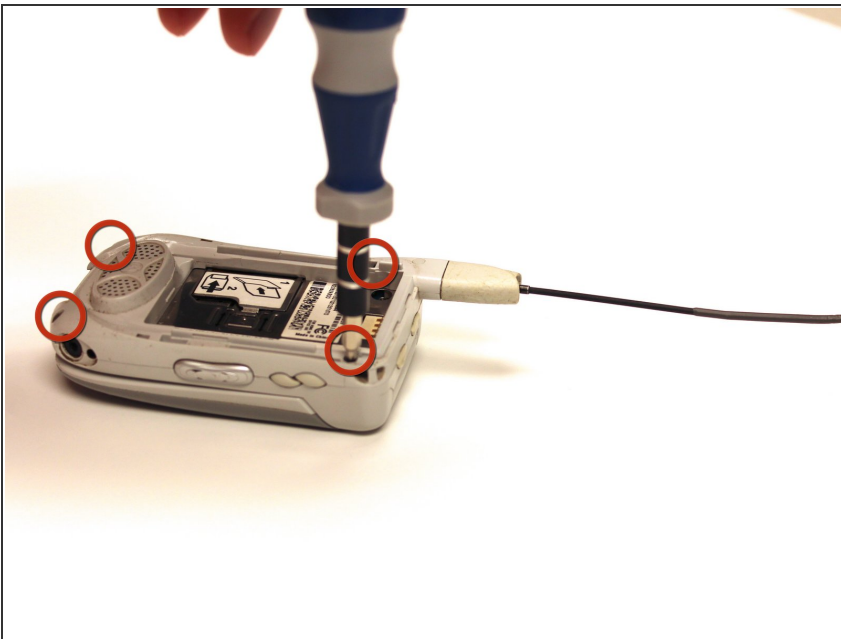
- Lift the metal flap to gain access to the bottom of the SIM card.
- Remove the SIM card by sliding it out parallel to the bottom of the flap.

Step 7 — Circuit Board



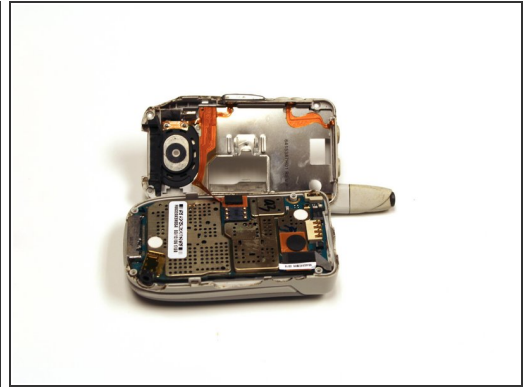
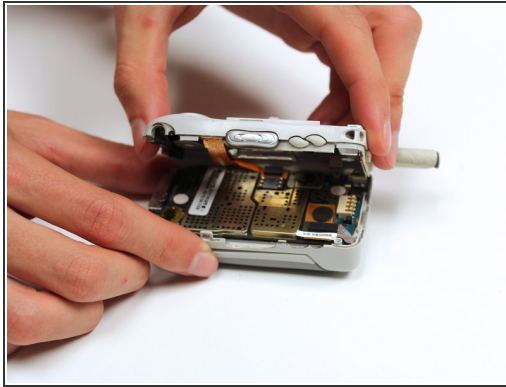
- Extend the antenna.

Step 8




- Remove the four 4.8 mm Torx T6 screws from the corners of the back of the phone.
- ⓘ If the antenna is not fully extended, the top left screw will not be accessible.

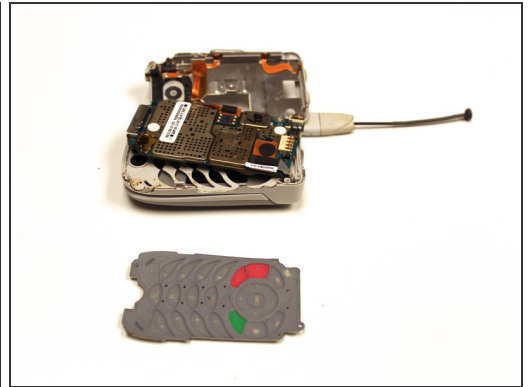
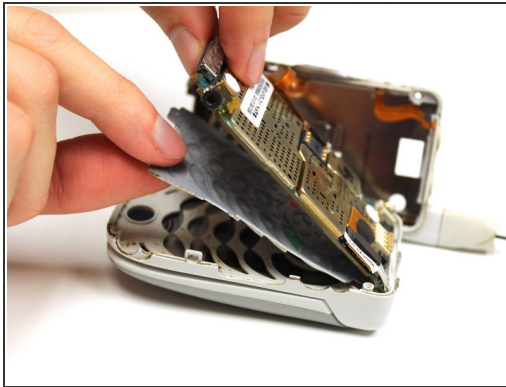
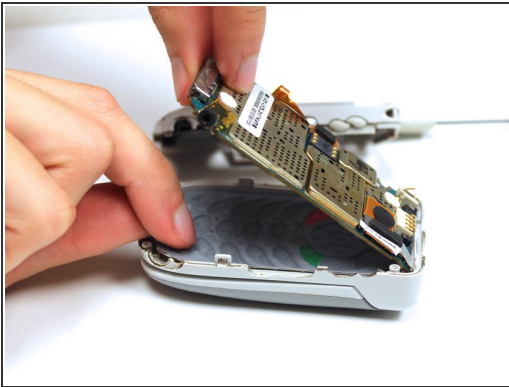
Step 9




- Gently lift off the back half of the phone and set to the side.

 Permanent circuit connections prevent the cover from completely separating from the phone. Do not attempt to disconnect these circuits.

Step 10 — Keypad



- Gently lift the end of the circuit board farthest from the phone hinge.

 The circuit board is permanently connected to the phone casing at the end nearest to the hinge.

- Grasp the keypad at the bottom of the phone, raise it, and pull it away.

Step 11 — Motorola i450 Boost Mobile Teardown



- Exploded view of all phone components.

To reassemble your device, follow these instructions in reverse order.