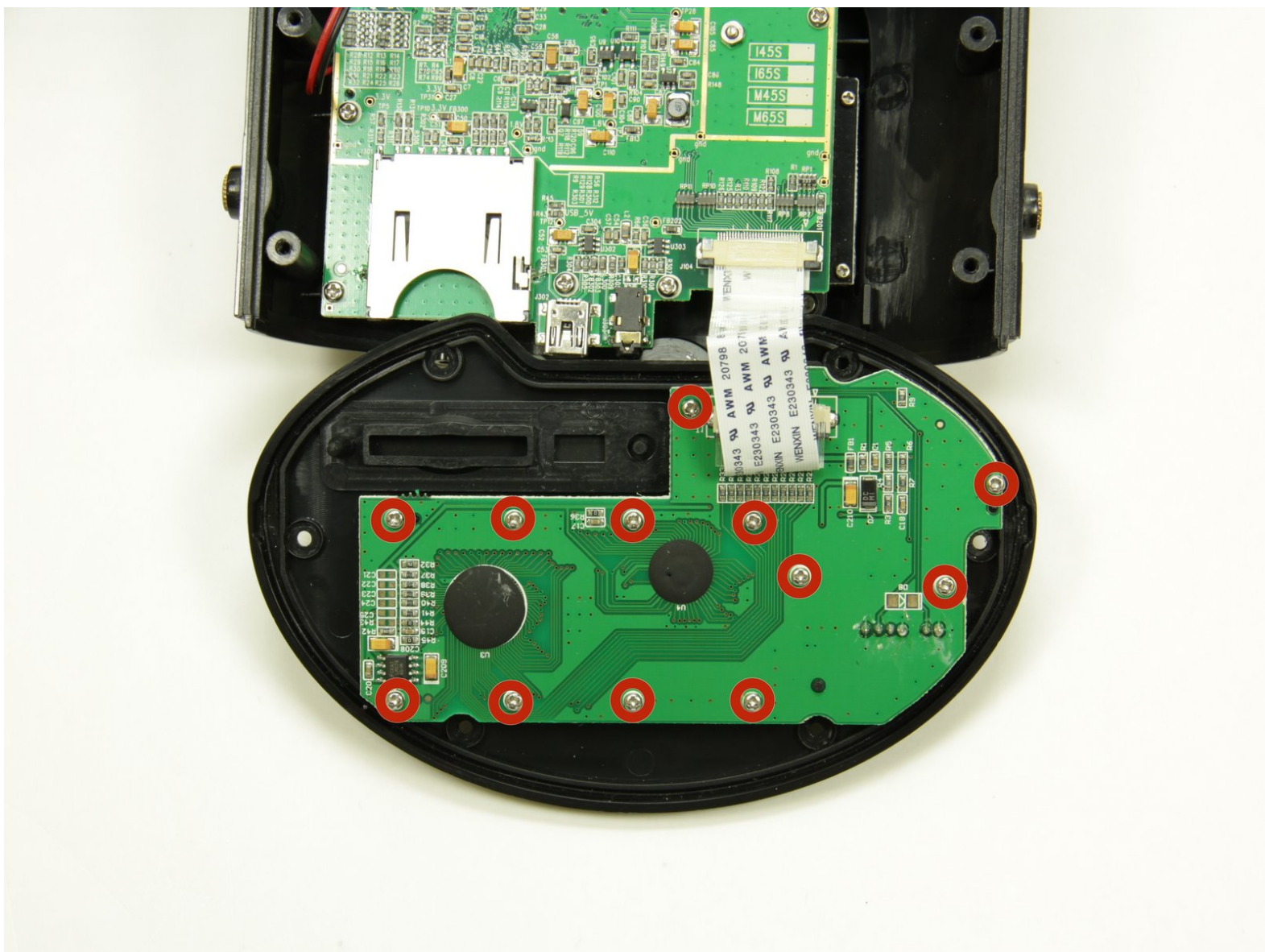




Moultrie I45 GameSpy Buttons Replacement

Remove the camera buttons.

Written By: Sean Hill



INTRODUCTION

This guide details how to remove the camera buttons.



TOOLS:

- [Phillips #000 Screwdriver](#) (1)
-

Step 1 — Casing



- Using a Philips head screwdriver, remove the eight 6mm screws located at the bottom of the device.

Step 2



- Remove the butterfly nut from the lid arm.

Step 3



- Remove the lid-covering.

Step 4




- Using a Phillips head screwdriver, remove the six 4mm screws from the face of the camera.

Step 5



- Gently separate the two halves of the case.

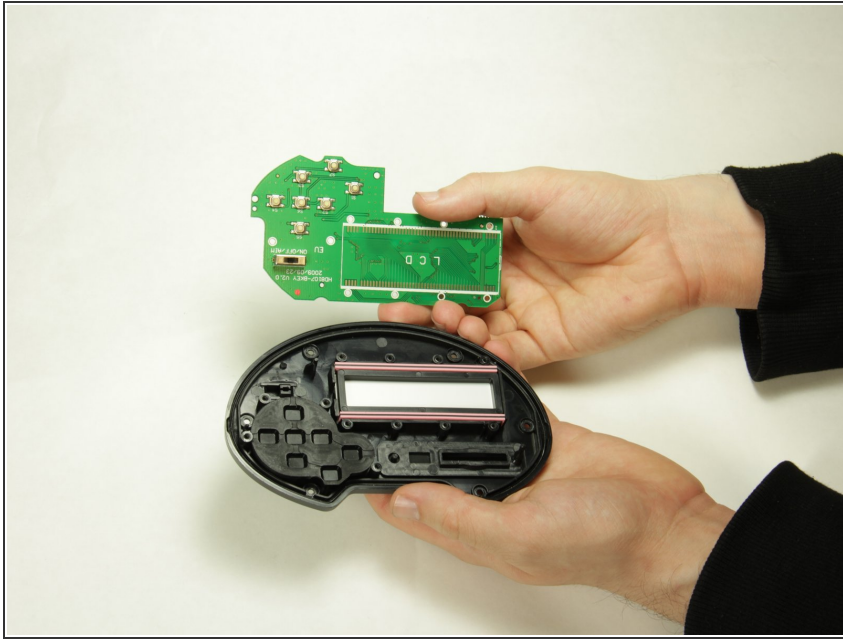
 The two halves are connected by a wire. Pulling too roughly can damage the wires and cause the camera to stop functioning.

Step 6 — Buttons



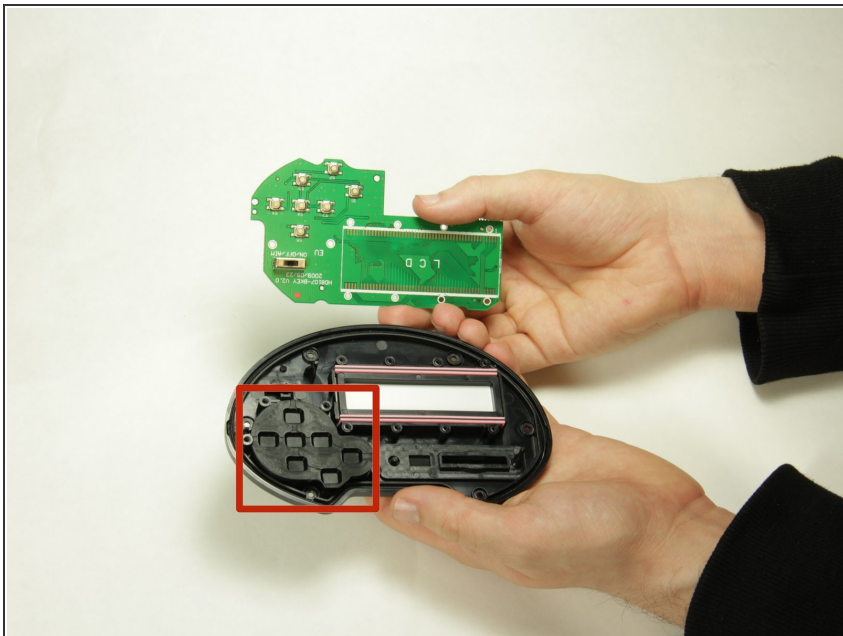
- Using a Phillips head screwdriver, remove the twelve 3mm screws from the circuit board.

Step 7



- Gently remove the circuit board from the face of the camera.

Step 8



- Remove the buttons.

To reassemble your device, follow these instructions in reverse order.