



# Mr. Coffee DRX5 Digital Display Replacement

This guide will show you how to replace the display on your Mr. Coffee DRX5.

Written By: James Patterson







## TOOLS:

- [iFixit Opening Tools](#) (1)
  - [Phillips #1 Screwdriver](#) (1)
-

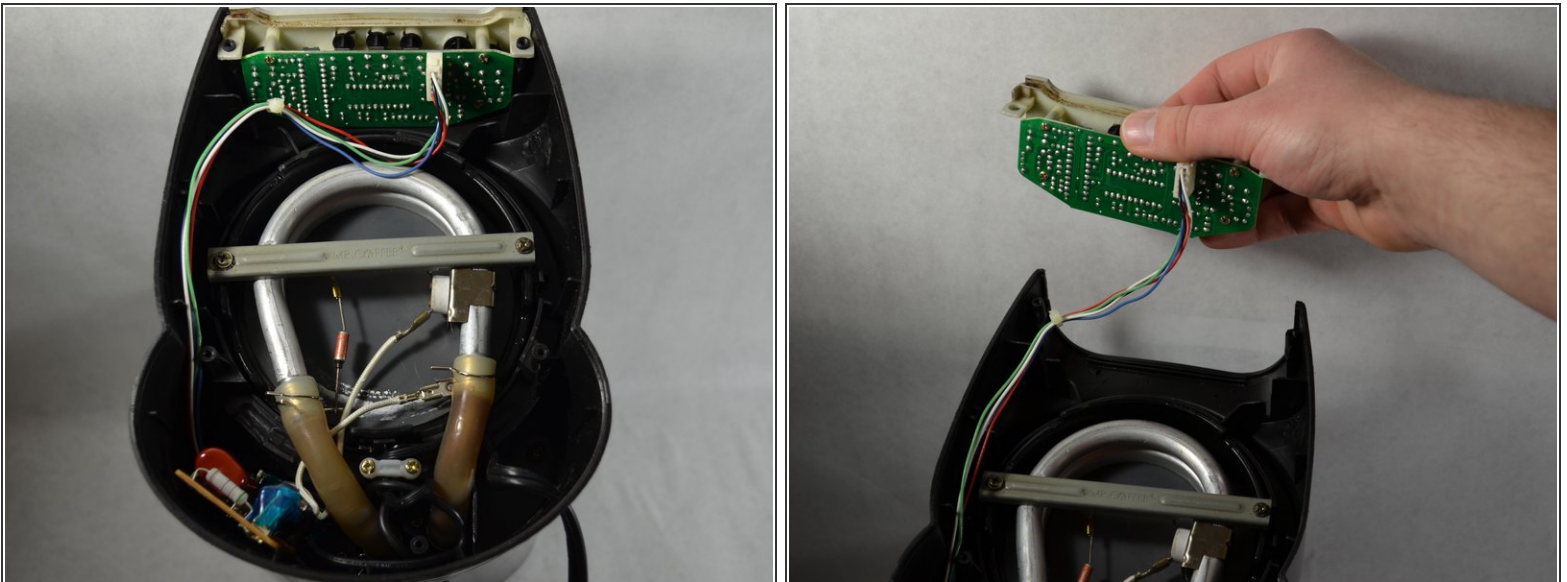


## Step 1 — Digital Display



- Use a Phillips #1 screwdriver to remove the two 9mm screws and the three 11mm screws on the bottom of the coffee maker and remove the bottom plastic cover.

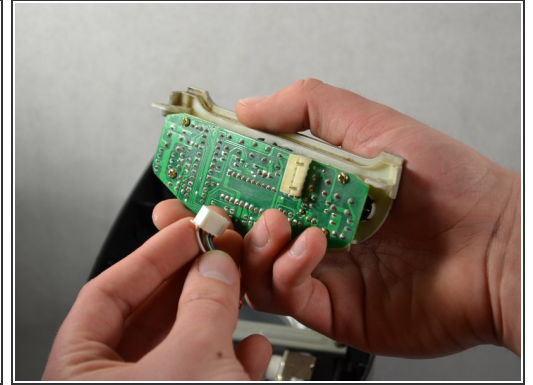
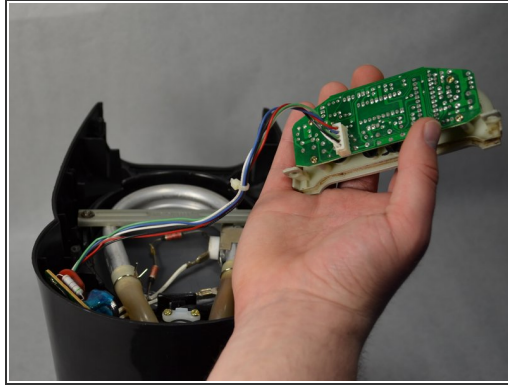
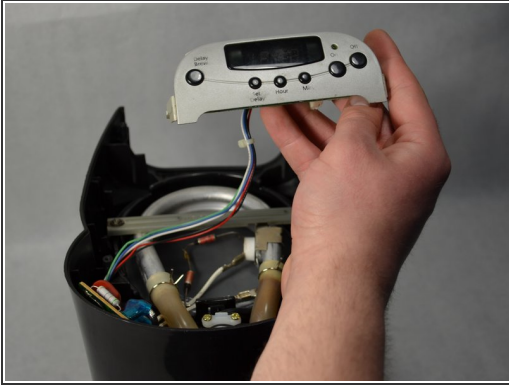
## Step 2



- Slide display out of base housing.



## Step 3



- Unplug display from back

To reassemble your device, follow these instructions in reverse order.