



# Mr. Coffee DRX5 Water Reservoir Replacement

This guide will show you how to replace the part of the coffee machine that holds the water before it is brewed.

Written By: Michael Chhim





## TOOLS:

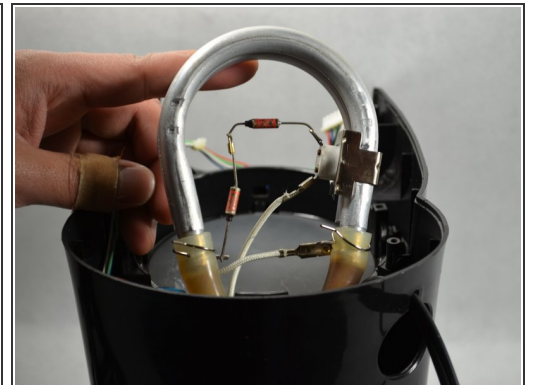
- [Phillips #1 Screwdriver](#) (1)
  - [iFixit Opening Tools](#) (1)
-

## Step 1 — Water Reservoir



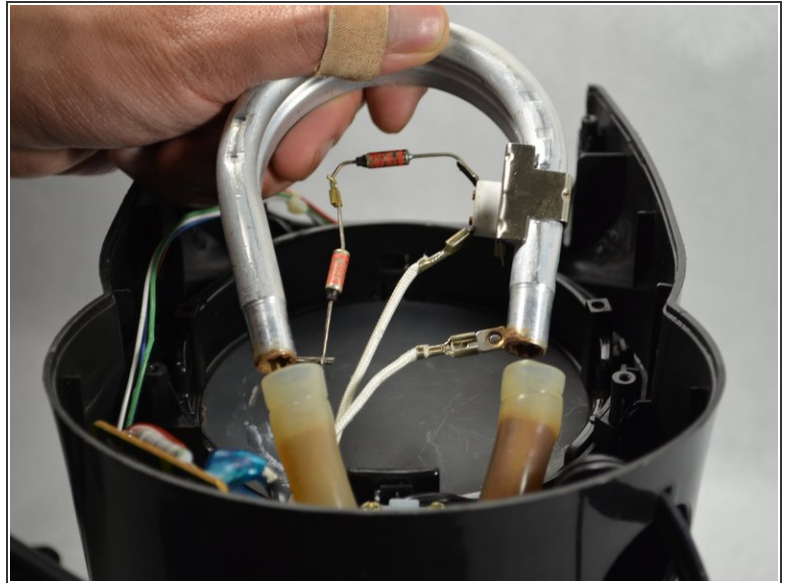
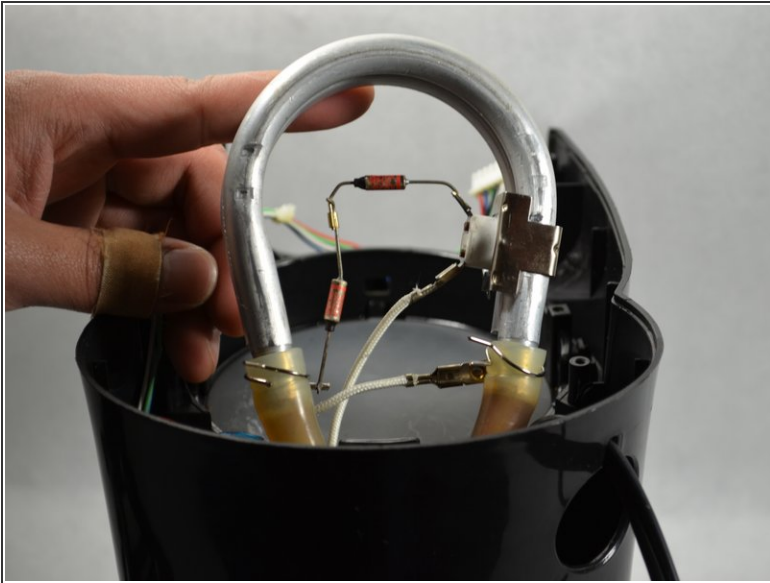
- Use a Phillips #1 screwdriver to remove the two 9mm screws and the three 11mm screws on the bottom of the coffee maker and remove the bottom plastic cover.

## Step 2



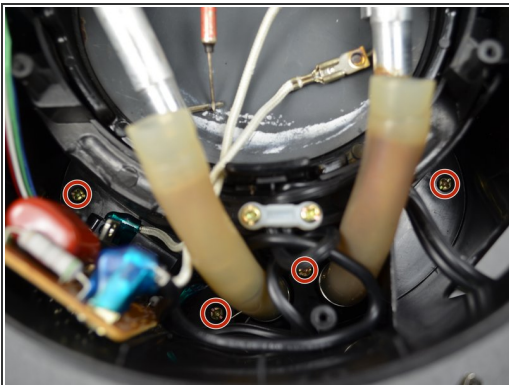
- Using a Phillips #1 screwdriver, remove 12mm screws from heating element bracket and remove bracket.

### Step 3



- Remove 2 hose clamps from heating element. Remove heating element from tubes.

### Step 4



- Using a Phillips #1 screwdriver, remove one 10mm screw, and three 11mm screws connecting the reservoir to the base and remove reservoir from the base.

To reassemble your device, follow these instructions in reverse order.