



# Mr. Coffee DW13 Filter Replacement

Replace a broken or cracked filter.

Written By: Tess Bradley



## INTRODUCTION

This is an easy replacement. All you need to do is open the top of the coffeemaker, move a black plastic arm, and lift the filter out of the machine.

## Step 1 — Filter



- Face the top of the coffeemaker towards you.

## Step 2



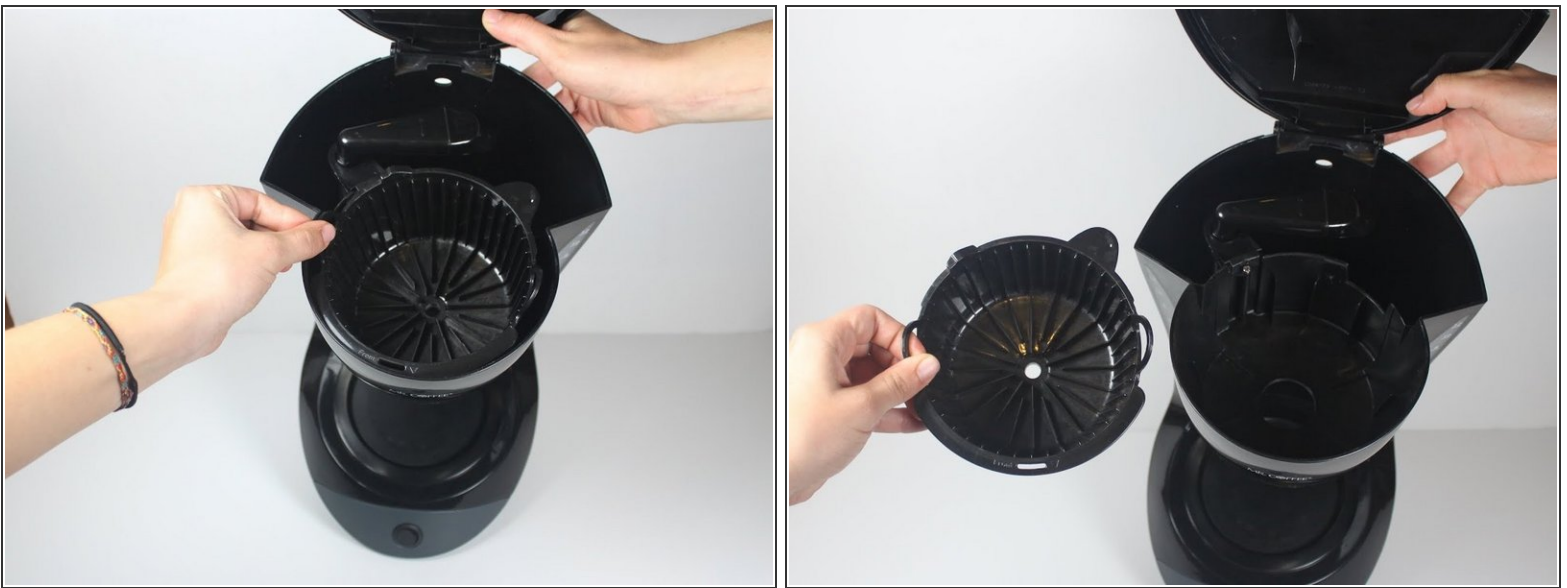
- Identify the two tabs on top of the machine.
- Lift the top of the coffeemaker up, using these tabs

### Step 3



- Slide the black spout towards the back of the coffee maker, exposing the filter.

### Step 4



- Using the side tabs, gently lift the filter up and out of the machine.

To reassemble your device, follow these instructions in reverse order.