



# Munchkin Mozart Magic Cube Face plate Replacement

This guide will explain the prerequisite of changing the face plate of the Munchkin Magic Cube.

Written By: Ibrahim Aldairem



# INTRODUCTION

These will clarify how to change the face plate of the game, step by step.



## TOOLS:

- [Metal Spudger Set](#) (1)
  - [Phillips #2 Screwdriver](#) (1)
  - [iFixit Opening Tools](#) (1)
-

## Step 1 — Face plate



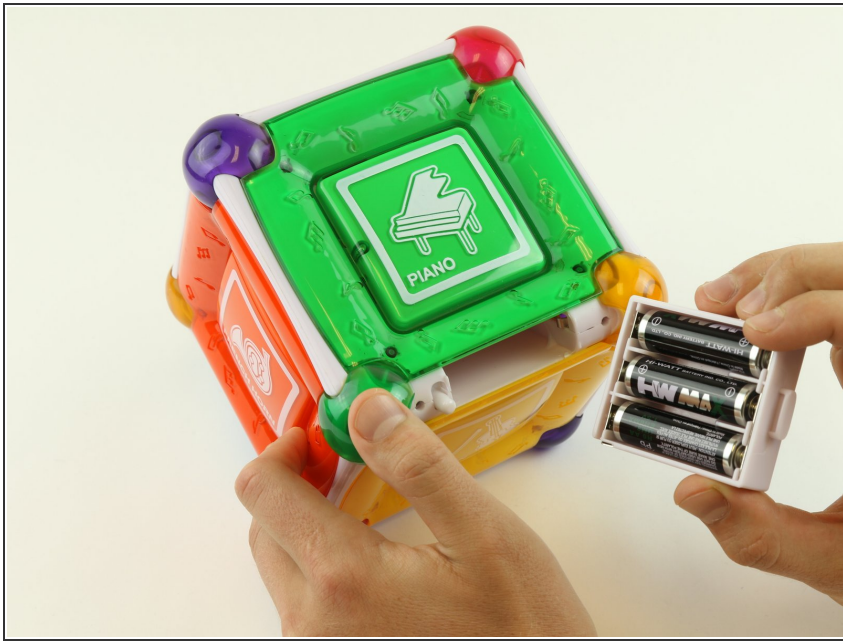
- Remove two 6 mm Phillips #2 screws on either side of the On/Off Plate.

## Step 2



- Remove the On/Off switch plate and save the screws so you can use them later to put the plate back on.

### Step 3



- Gently pull out the battery cartridge and if needed, replace the batteries with 3 AA alkaline batteries.

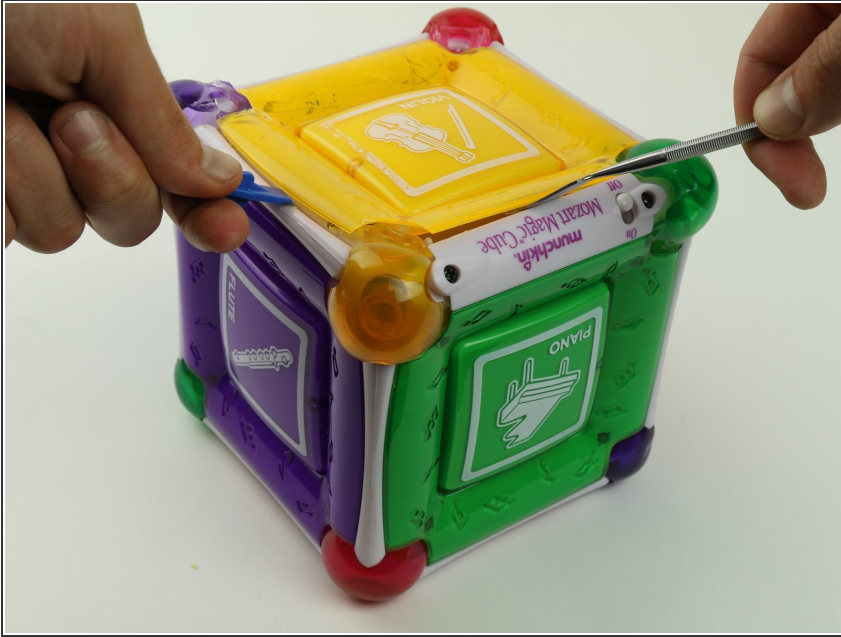
### Step 4



- Starting with the yellow face, insert the metal spudger between the yellow face and the white frame, prying the frame apart.

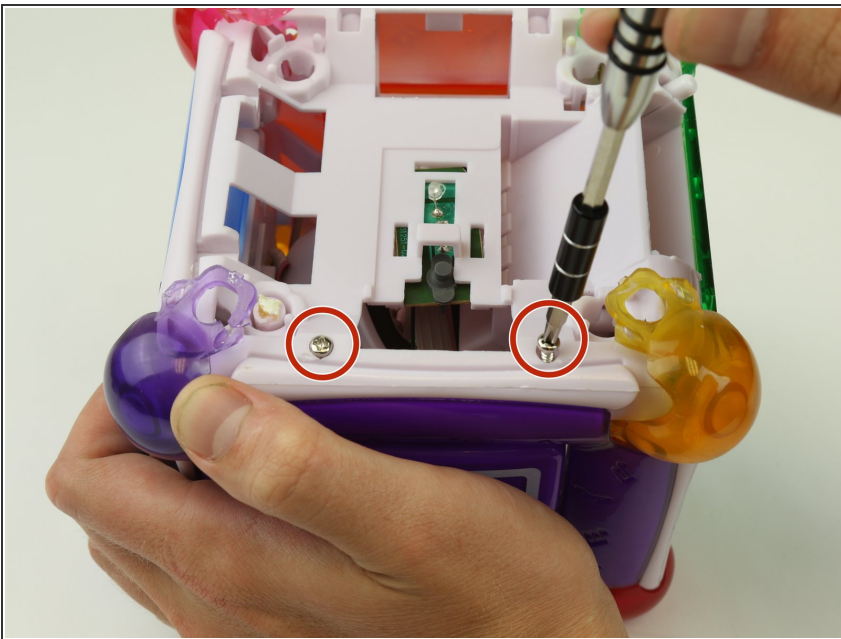


## Step 5



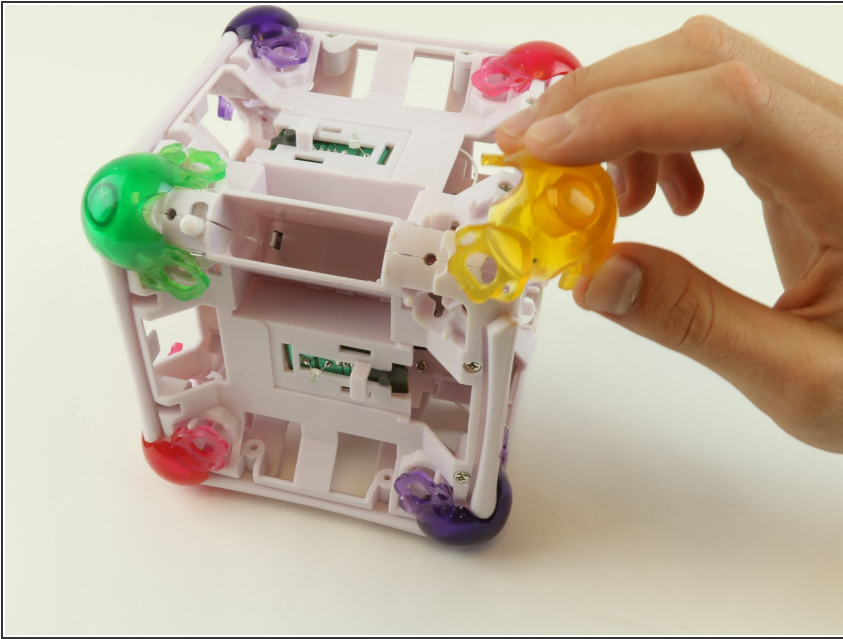
- Insert the metal spudger in the space created by the plastic opening tool between the frame and face of the cube.
- Pry the cube face from the frame.

## Step 6



- After removing the square plates, you can unscrew the screws underneath.
- Remove four 6 mm Phillips #2 screws, located on the sides.

## Step 7



- Remove the rubber corners by simply pulling them off.

To reassemble your device, follow these instructions in reverse order.