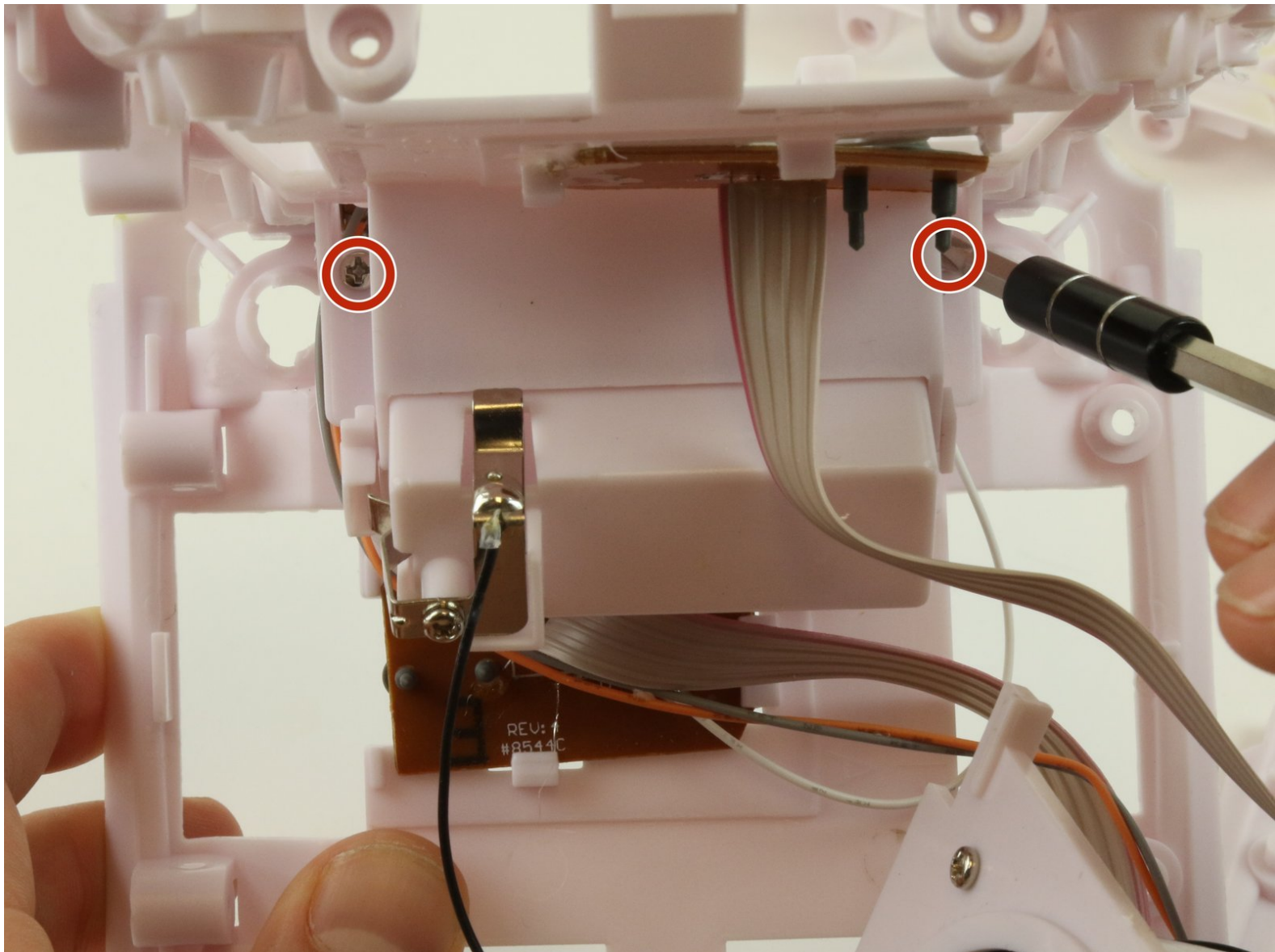




Munchkin Mozart Magic Cube On-Off Switch Replacement

This guide will provide step by step instructions on how to replace the on-off switch.

Written By: Panos Valavanis





TOOLS:

- [Phillips #2 Screwdriver](#) (1)
 - [Soldering Iron](#) (1)
 - [Metal Spudger](#) (1)
 - [iFixit Opening Tools](#) (1)
-

Step 1 — Face plate



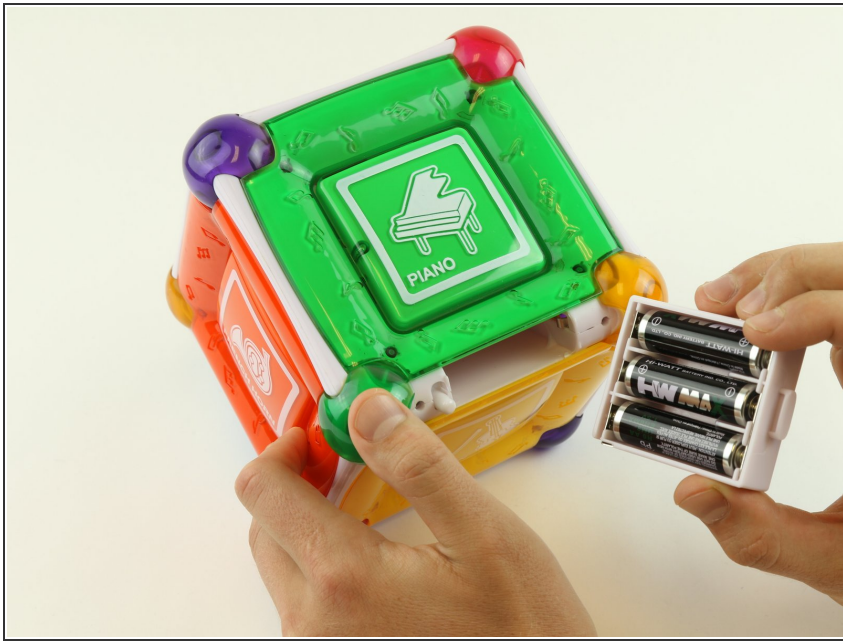
- Remove two 6 mm Phillips #2 screws on either side of the On/Off Plate.

Step 2



- Remove the On/Off switch plate and save the screws so you can use them later to put the plate back on.

Step 3



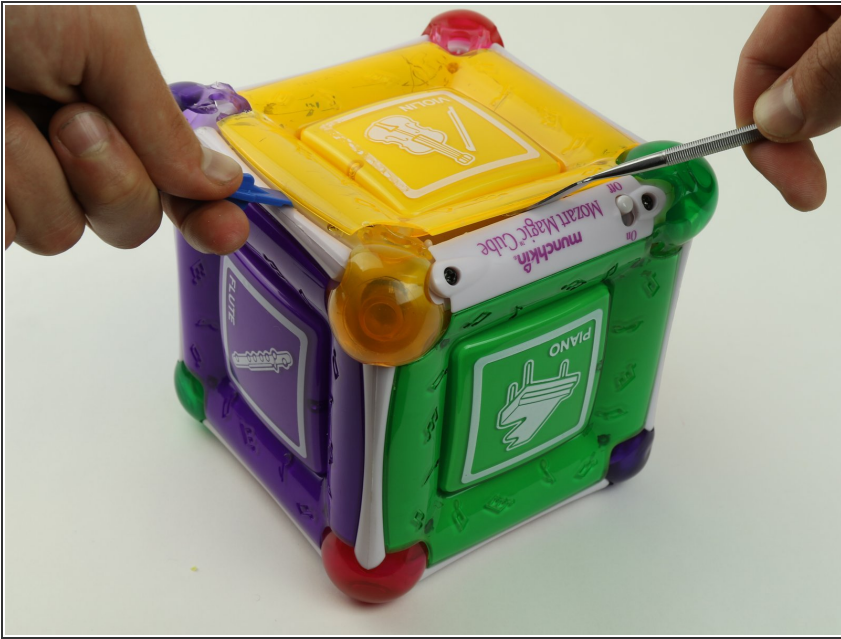
- Gently pull out the battery cartridge and if needed, replace the batteries with 3 AA alkaline batteries.

Step 4



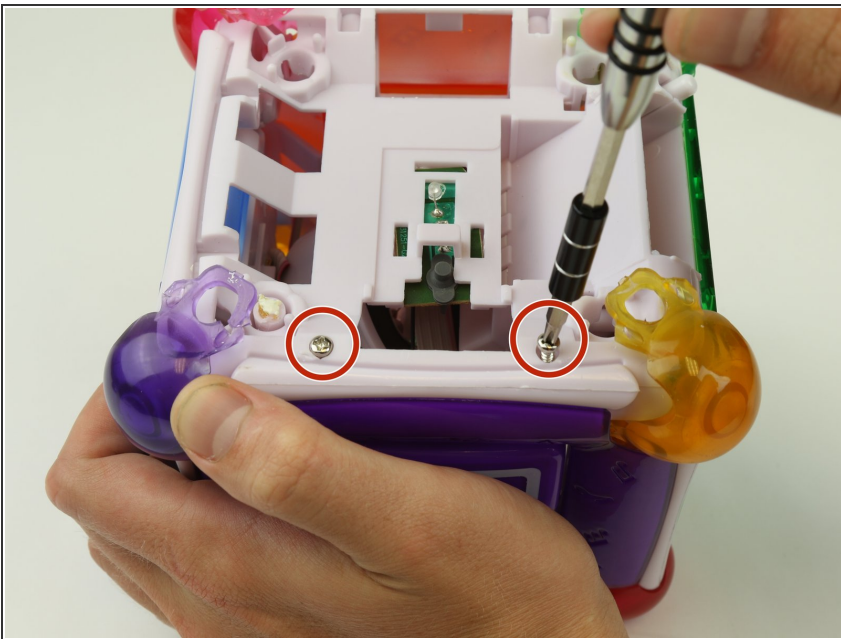
- Starting with the yellow face, insert the metal spudger between the yellow face and the white frame, prying the frame apart.

Step 5



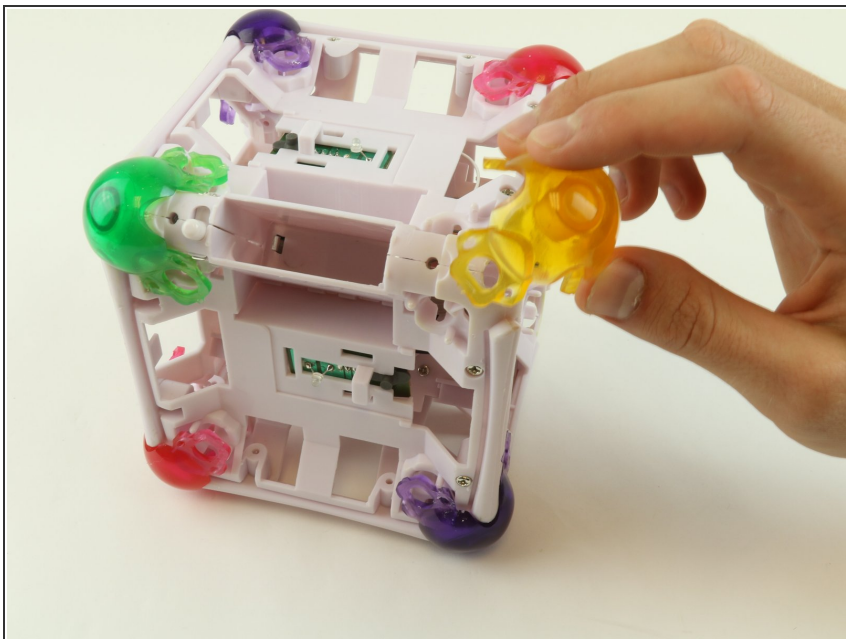
- Insert the metal spudger in the space created by the plastic opening tool between the frame and face of the cube.
- Pry the cube face from the frame.

Step 6



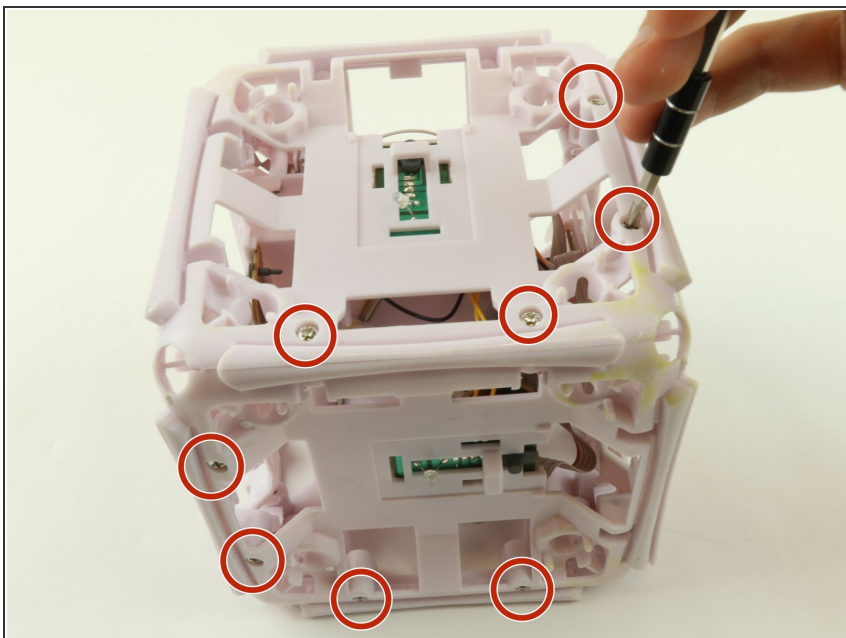
- After removing the square plates, you can unscrew the screws underneath.
- Remove four 6 mm Phillips #2 screws, located on the sides.

Step 7



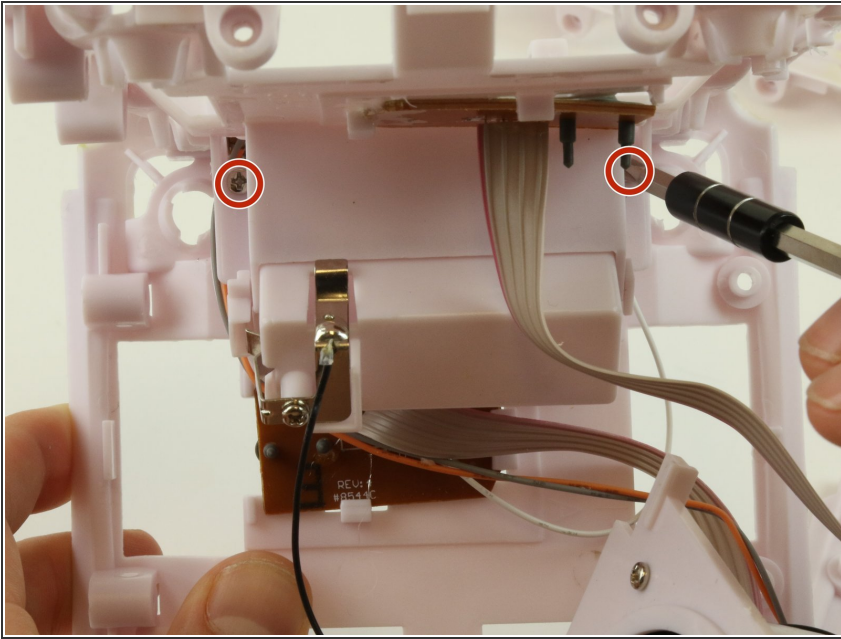
- Remove the rubber corners by simply pulling them off.

Step 8 — Frame Removal



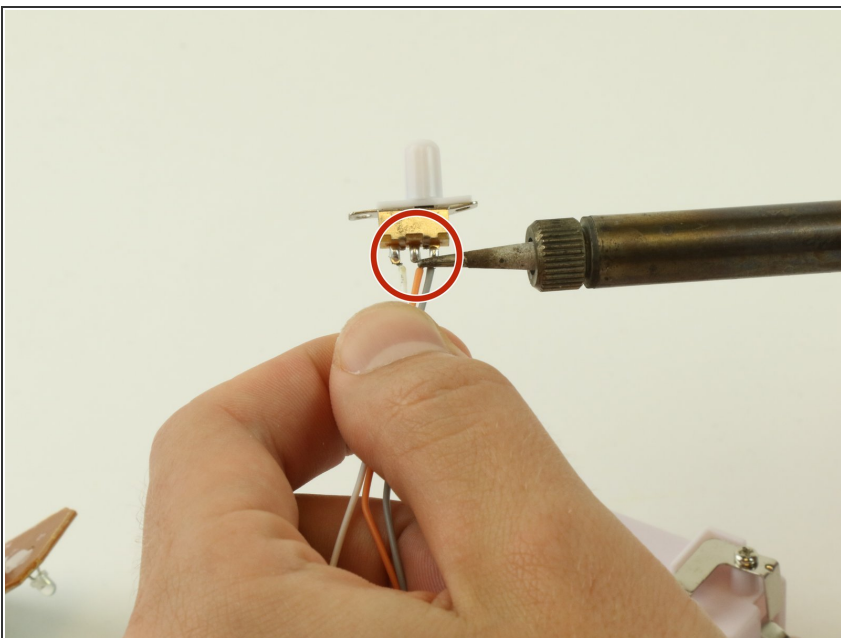
- Remove twenty-four 6 mm Phillips #2 from all 6 sides.
- Once the screws are removed, gently pull apart the frame.

Step 9 — On-Off Switch



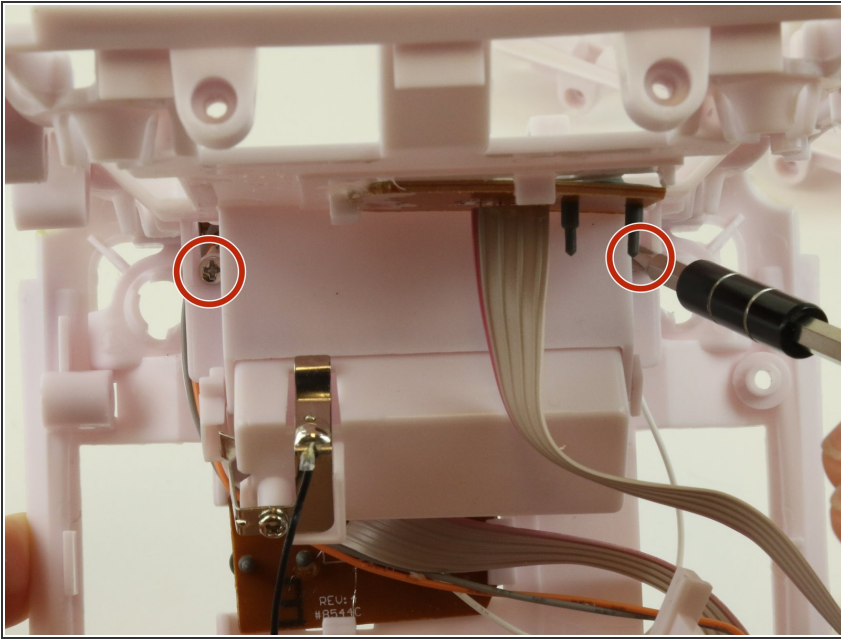
- Locate frame piece with battery pack and on-off switch, then remove two 6 mm Phillips #2 screws, located on either side of the battery pack.
- Once removed, the on-off switch will easily slide out of position

Step 10



- To disconnect the on-off switch, carefully desolder the connecting points and remove the switch.
 - Place the new switch into position, and solder back into place.
- i** For soldering instructions please see this additional guide [How To Solder and Desolder Connections](#)

Step 11



- To reinstall the switch, first place it back into position.
- Insert the battery pack back into facing the correct way back into int battery pack slot.
- Lastly, using the Phillips head screw driver to screw the screws back into place.

To reassemble your device, follow these instructions in reverse order.