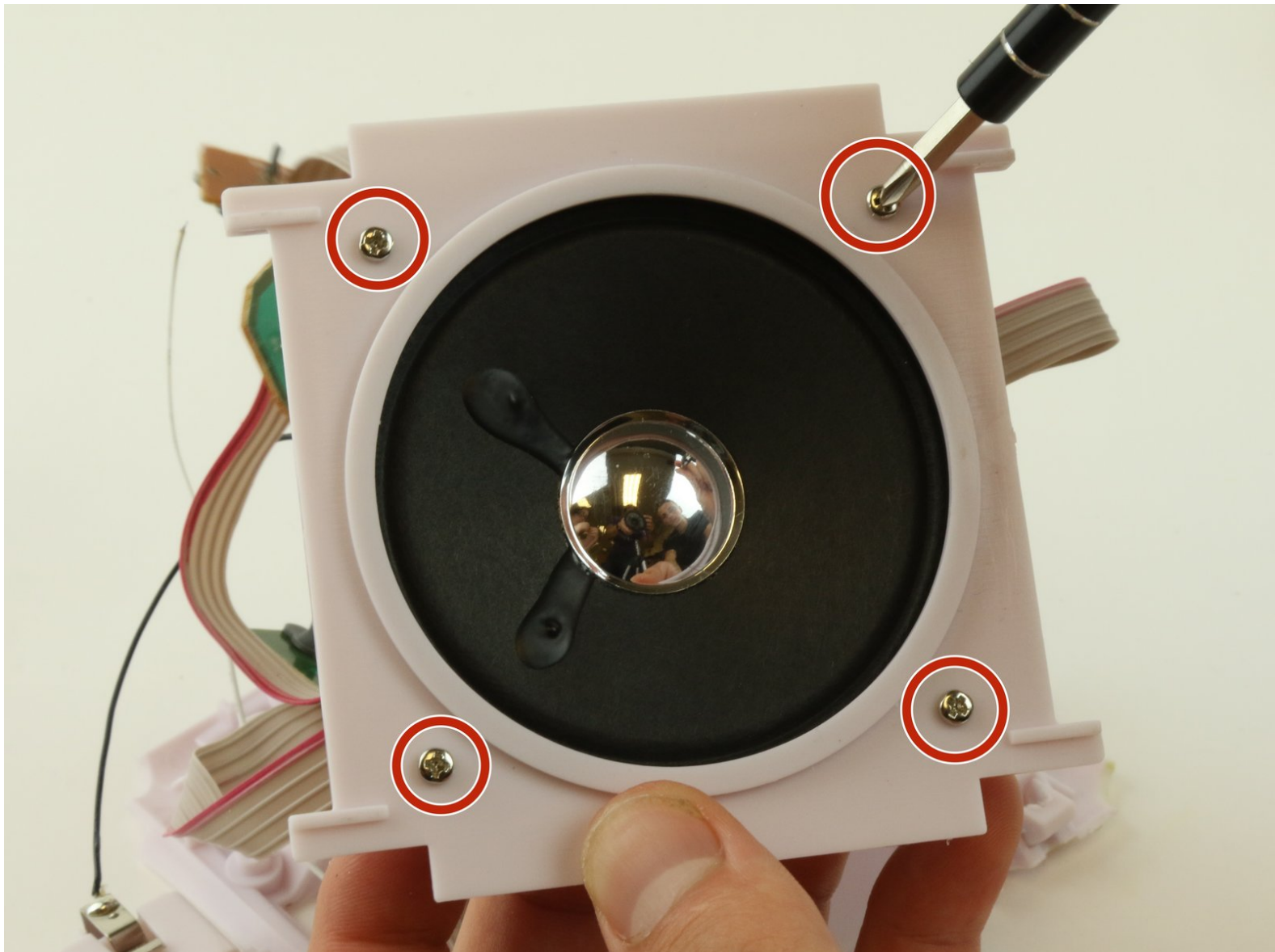




Munchkin Mozart Magic Cube Speaker Replacement

This guide shows how to replace a speaker that is broken.

Written By: Paula Campos



INTRODUCTION

Only replace speaker as a last measure, since getting to the speaker requires removal of parts that might not fit perfectly back together.



TOOLS:

- [Phillips #2 Screwdriver](#) (1)
 - [Metal Spudger Set](#) (1)
 - [Soldering Iron](#) (1)
 - [iFixit Opening Tools](#) (1)
-

Step 1 — Face plate



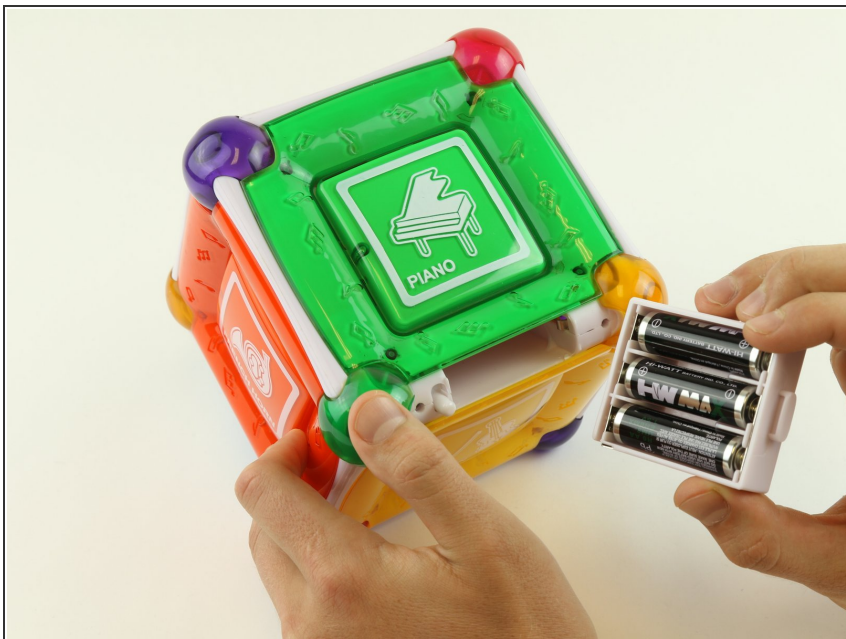
- Remove two 6 mm Phillips #2 screws on either side of the On/Off Plate.

Step 2



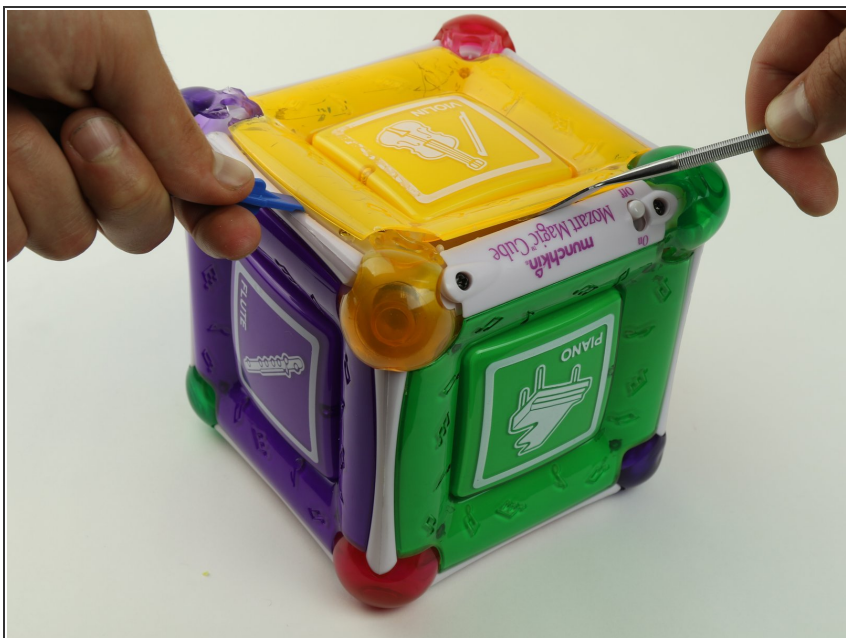
- Remove the On/Off switch plate and save the screws so you can use them later to put the plate back on.

Step 3



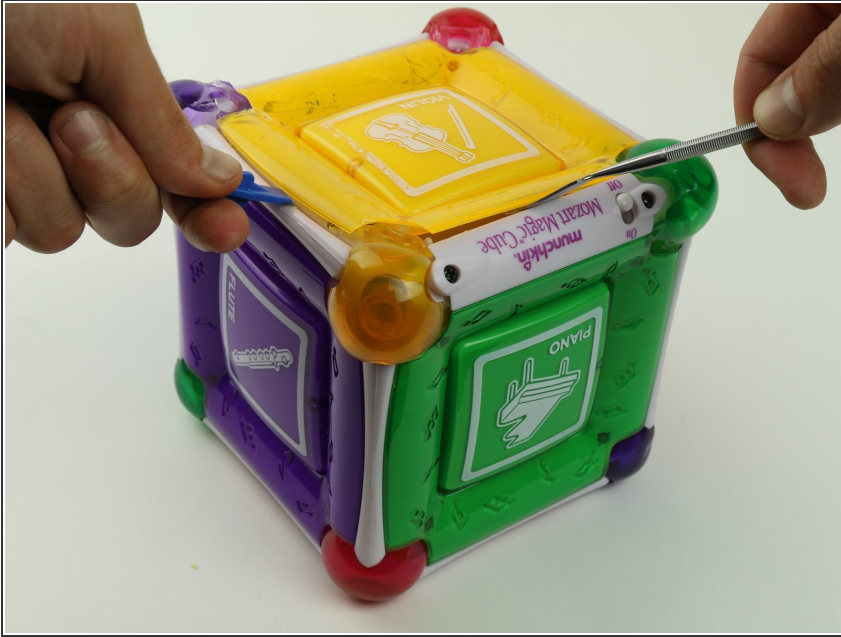
- Gently pull out the battery cartridge and if needed, replace the batteries with 3 AA alkaline batteries.

Step 4



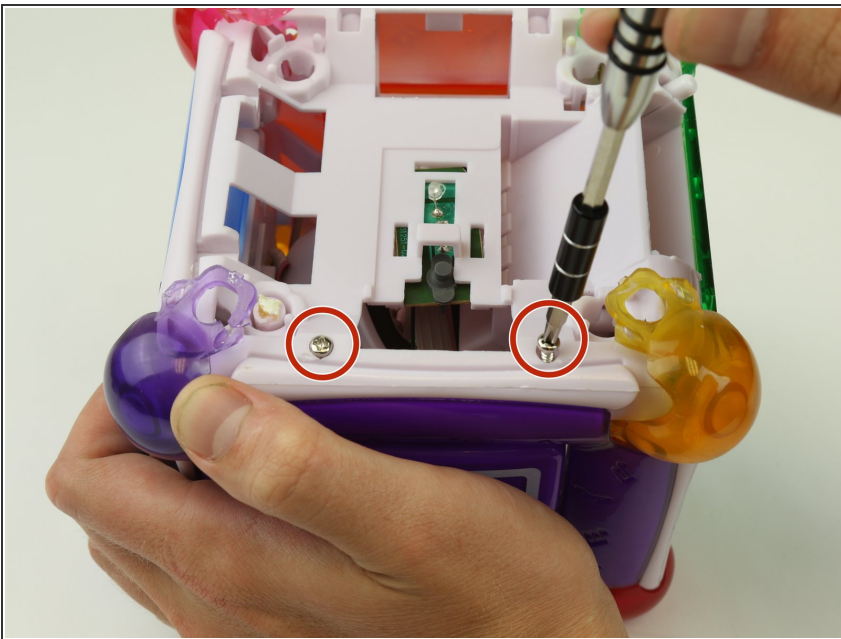
- Starting with the yellow face, insert the metal spudger between the yellow face and the white frame, prying the frame apart.

Step 5



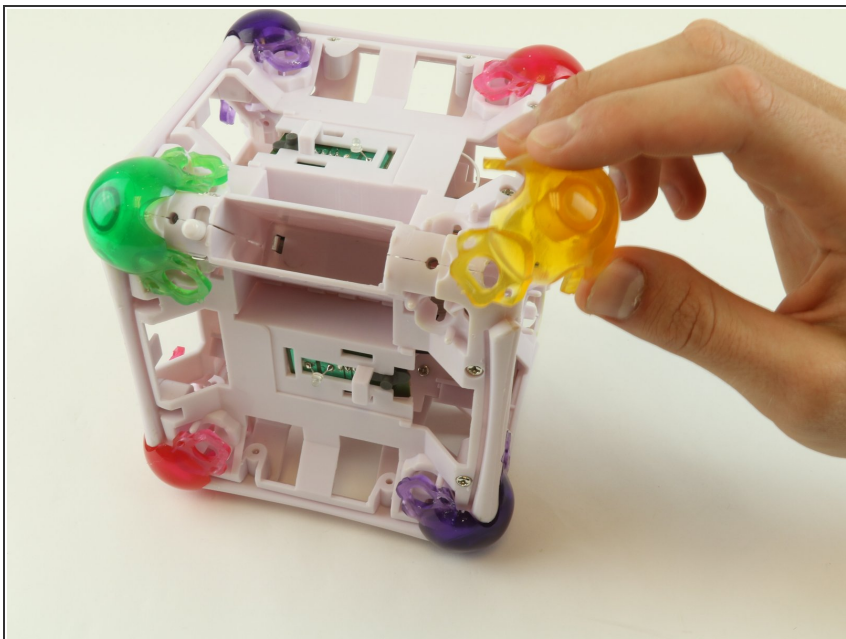
- Insert the metal spudger in the space created by the plastic opening tool between the frame and face of the cube.
- Pry the cube face from the frame.

Step 6



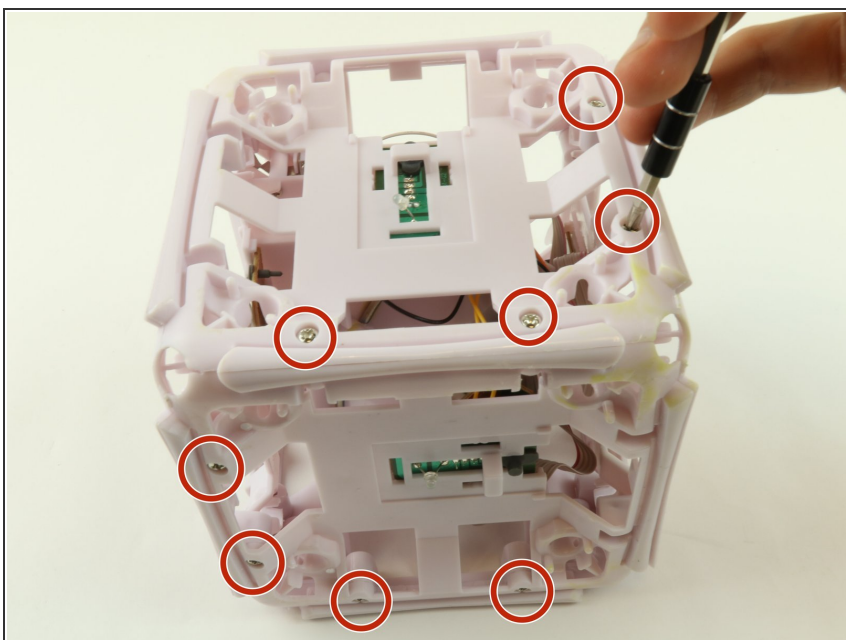
- After removing the square plates, you can unscrew the screws underneath.
- Remove four 6 mm Phillips #2 screws, located on the sides.

Step 7



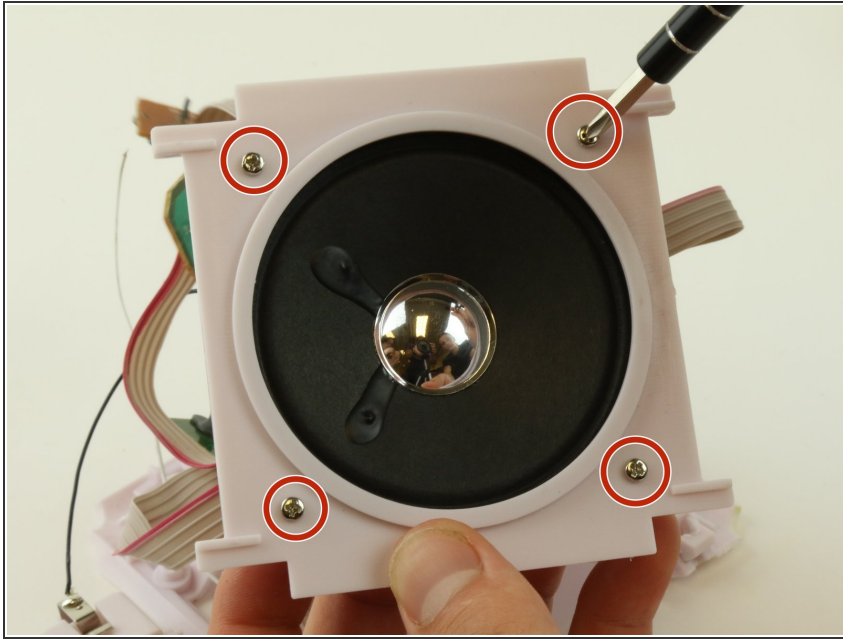
- Remove the rubber corners by simply pulling them off.

Step 8 — Frame Removal



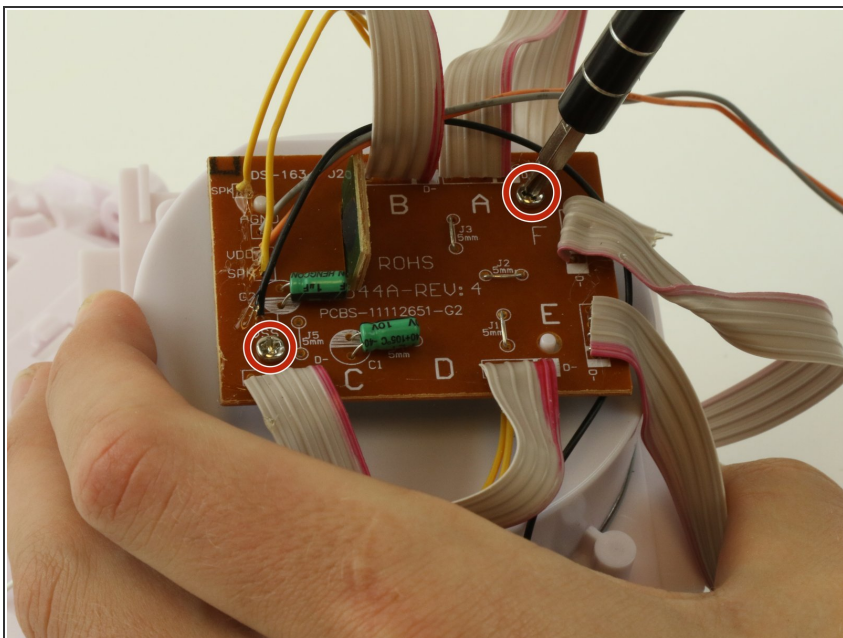
- Remove twenty-four 6 mm Phillips #2 from all 6 sides.
- Once the screws are removed, gently pull apart the frame.

Step 9 — Speaker



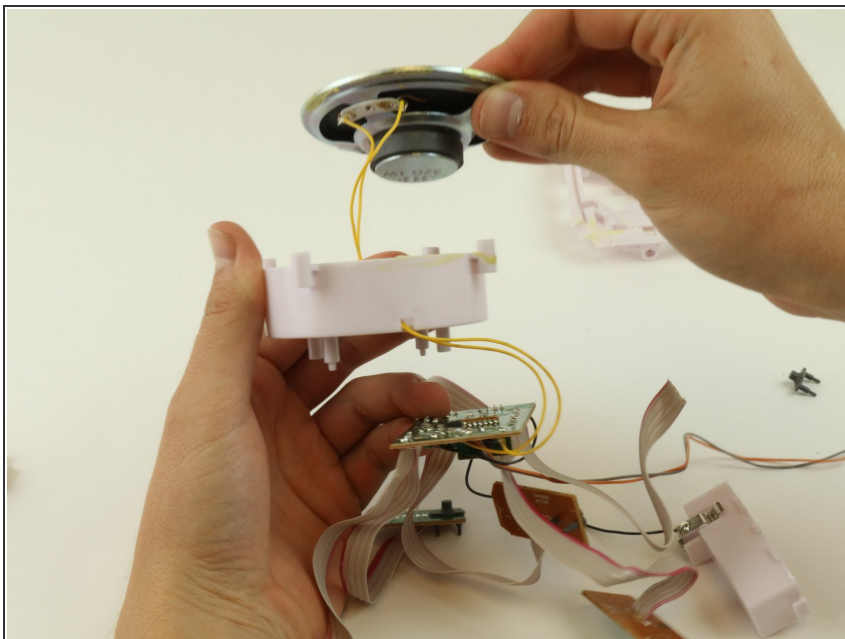
- Remove four 6 mm Phillips #2 screws that hold down the speaker to its plastic frame.

Step 10



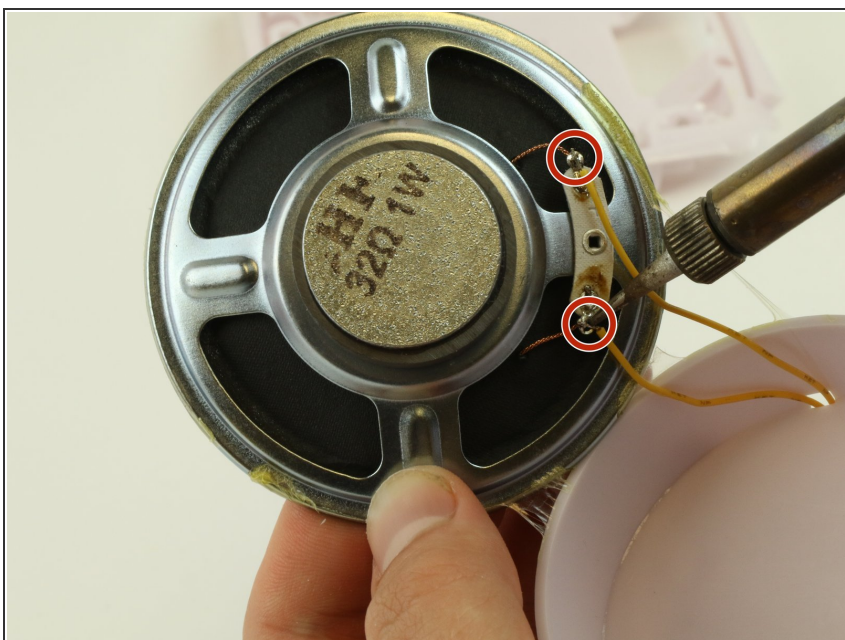
- Remove two 6 mm Phillips #2 screws holding down the main motherboard to plastic frame.

Step 11



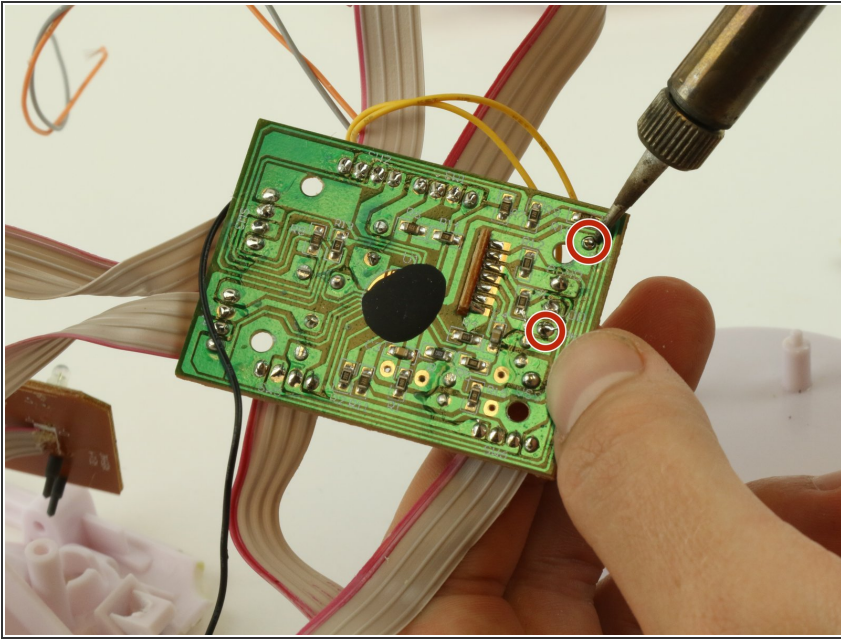
- Gently remove speaker and motherboard from plastic frame.

Step 12



- Desolder speaker cable connections
- ⓘ For soldering instructions please see this additional guide [How To Solder and Desolder Connections](#)

Step 13



- Desolder speaker cable connections from the motherboard.
- ⓘ If you're unsure which metal connector to unsolder note that SPK is written next to the metal spot,

To reassemble your device, follow these instructions in reverse order.