



NABI XD Battery Replacement

This guide will show how to take the battery out of the Nabi XD.

Written By: Marissa Schiereck



INTRODUCTION

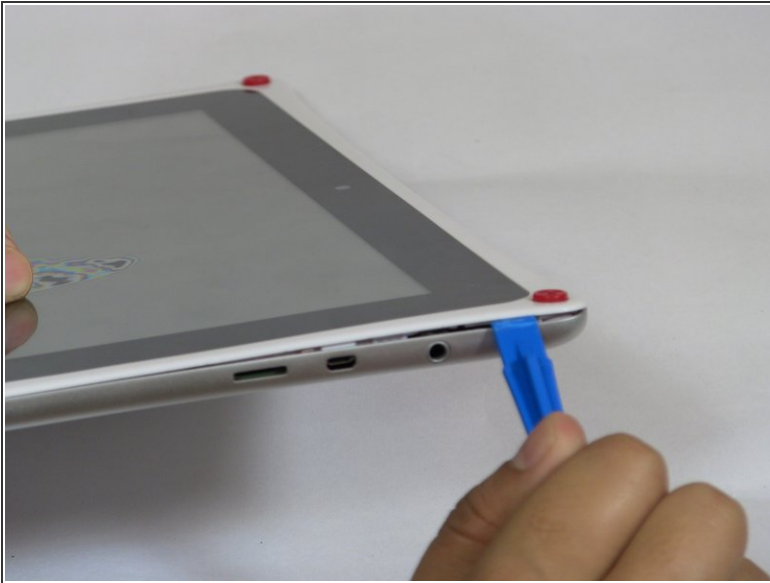
Has the battery been damaged or the device won't charge. Changing the battery may fix these problems.



TOOLS:

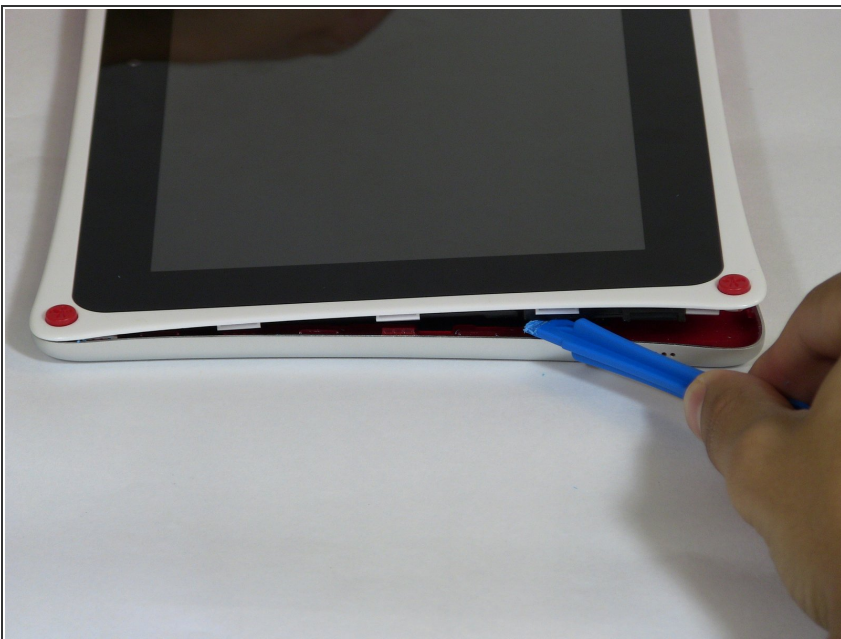
- [iFixit Opening Tools](#) (1)
-

Step 1 — Rear panel



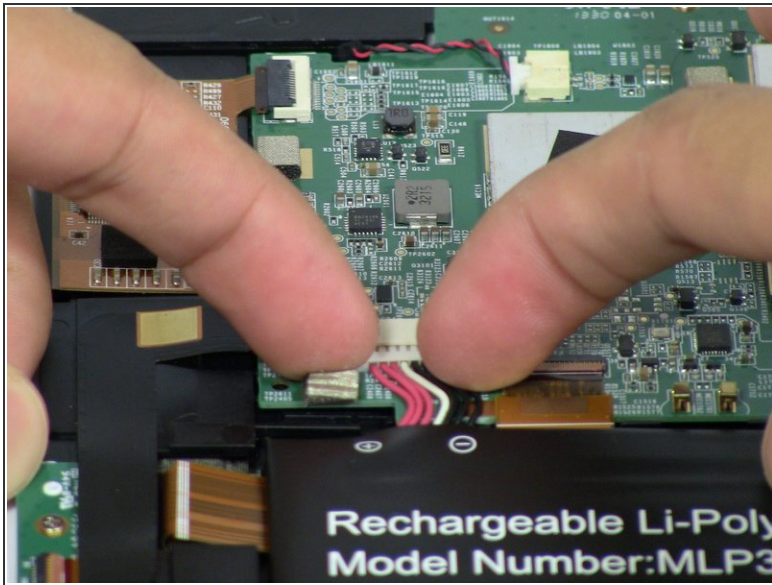
- Use the plastic opening tool at the top left corner seam, then pry the corner apart.

Step 2



- Next slide the plastic opening tool across the sides of the Nabi. It will slowly open.
- There are small plastic clips that need to be release. Gently apply outwards pressure until the clips give.
- Go around the NABI XD and separate the rear panel from the device.

Step 3 — Battery



- Place your fingernails on both sides of the connector and pull it straight back away from the holder.

Step 4



- ❗ Battery is glued to the base, lift carefully.
- To remove battery, lift the battery up from the motherboard.

To reassemble your device, follow these instructions in reverse order.