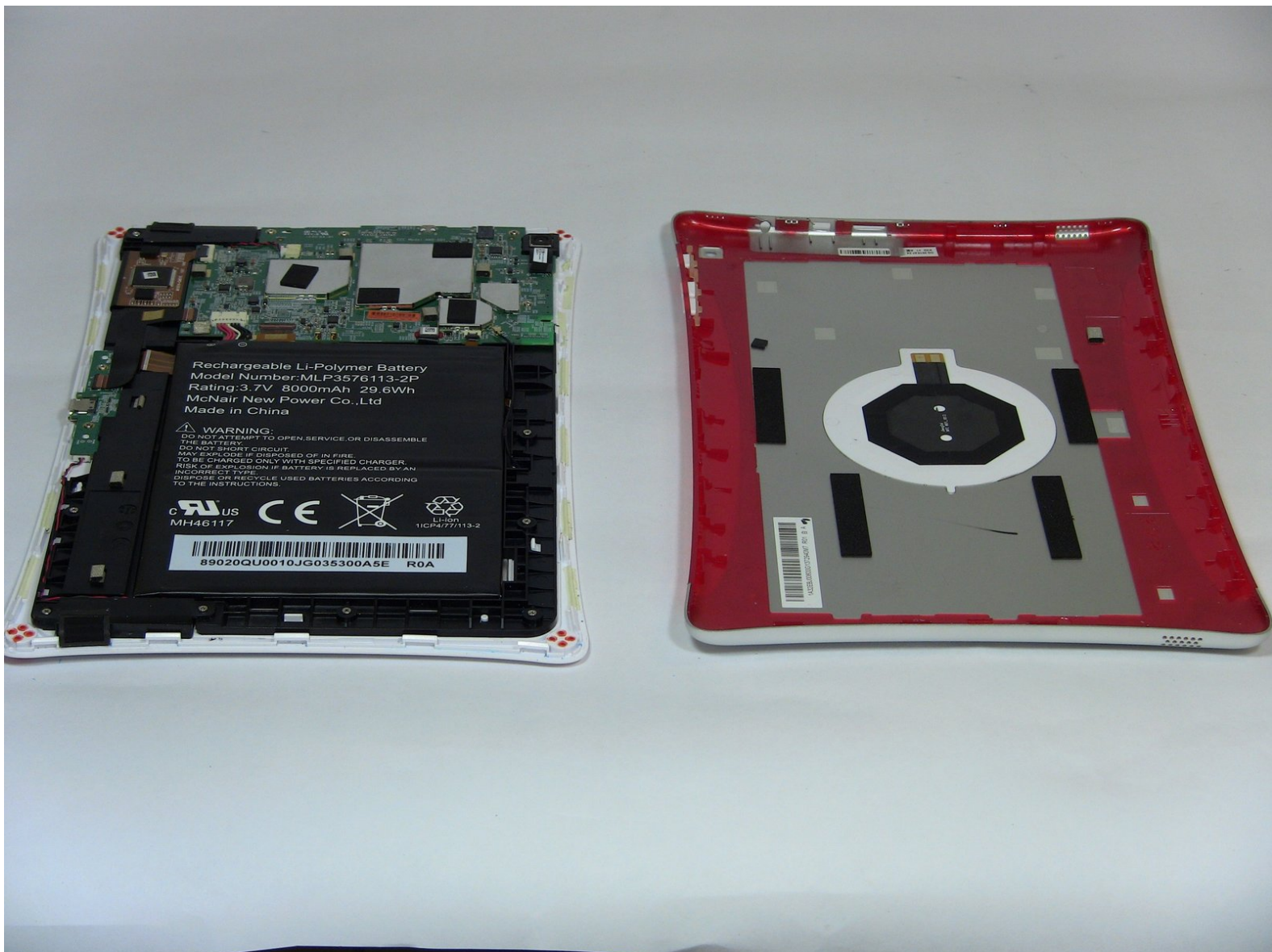




# NABI XD Rear panel Replacement

This guide will show how to take the rear panel off to access the inside of the Nabi XD.

Written By: Marissa Schiereck



---

## INTRODUCTION

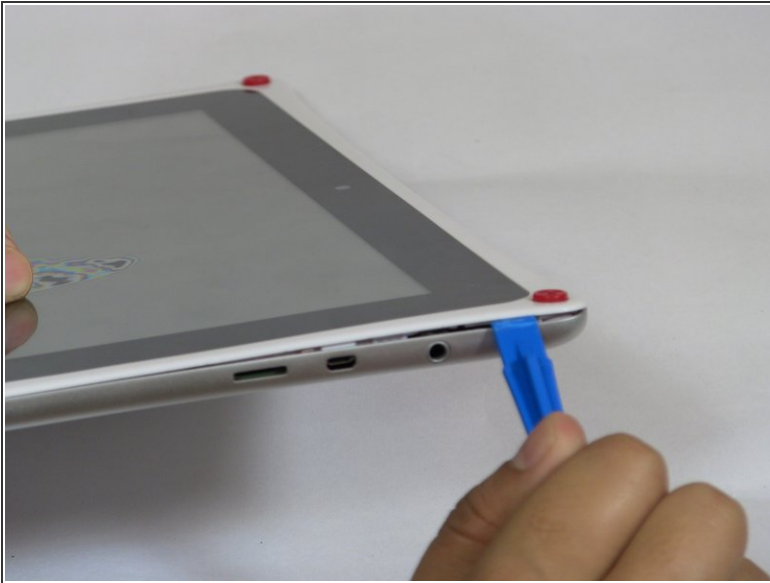
This is the first step when replacing any component in the NABI XD. This guide should be used when fixing any part of your device.

---

### TOOLS:

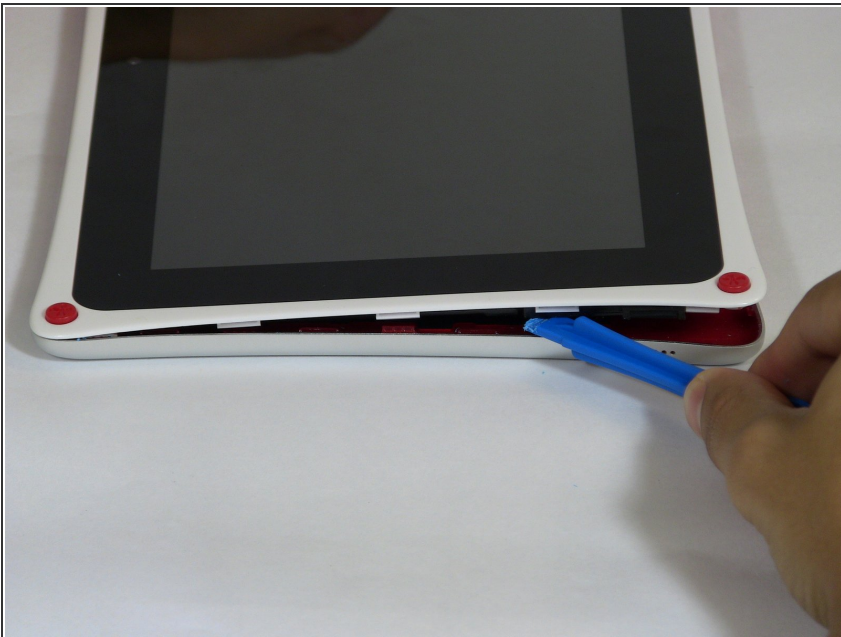
- [iFixit Opening Tools](#) (1)
-

## Step 1 — Rear panel



- Use the plastic opening tool at the top left corner seam, then pry the corner apart.

## Step 2



- Next slide the plastic opening tool across the sides of the Nabi. It will slowly open.
- There are small plastic clips that need to be release. Gently apply outwards pressure until the clips give.
- Go around the NABI XD and separate the rear panel from the device.

To reassemble your device, follow these instructions in reverse order.