



NCR 7606-1504-8801-A3 Motherboard Replacement

How to replace the motherboard on an NCR 7606-1504-8801-A3 POS cash register terminal.

Written By: Devon Large



INTRODUCTION

This guide is to display how to replace various parts in a cash register terminal and some minor maintenance.



TOOLS:

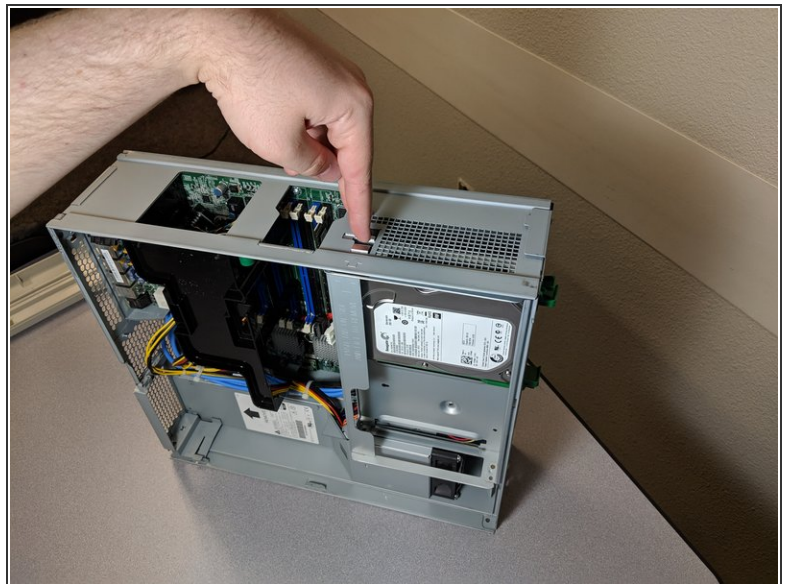
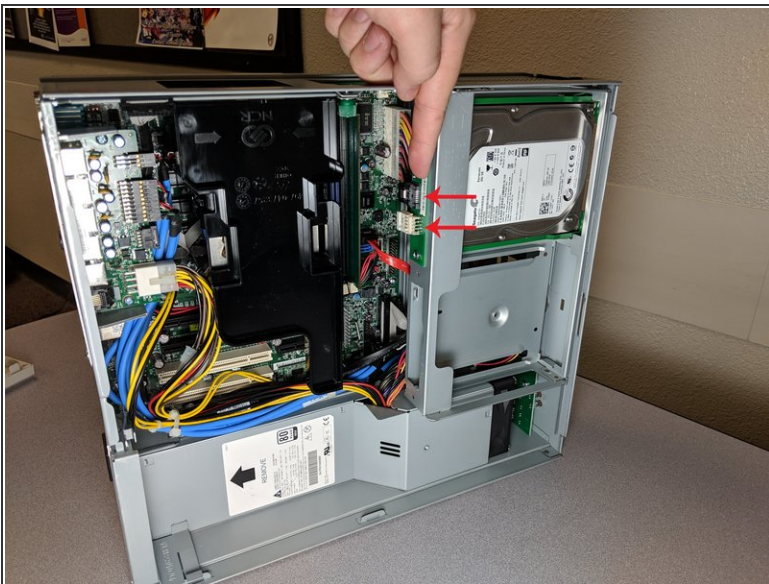
- [Phillips #0 Screwdriver](#) (1)
-

Step 1 — Motherboard



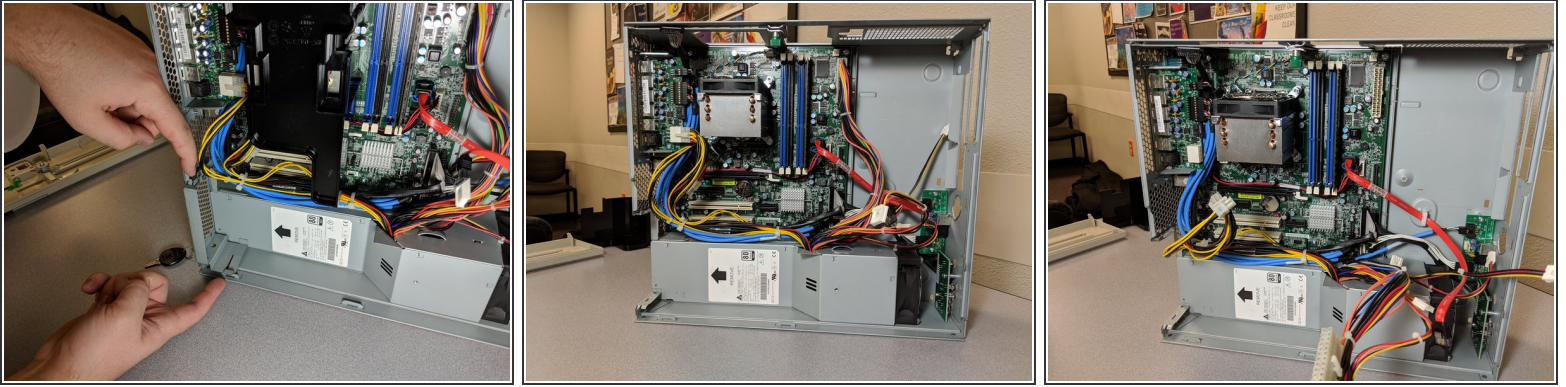
- You will need the security key that came with the register to unlock the front panel.
- There are two screws in the back to release the cover.

Step 2



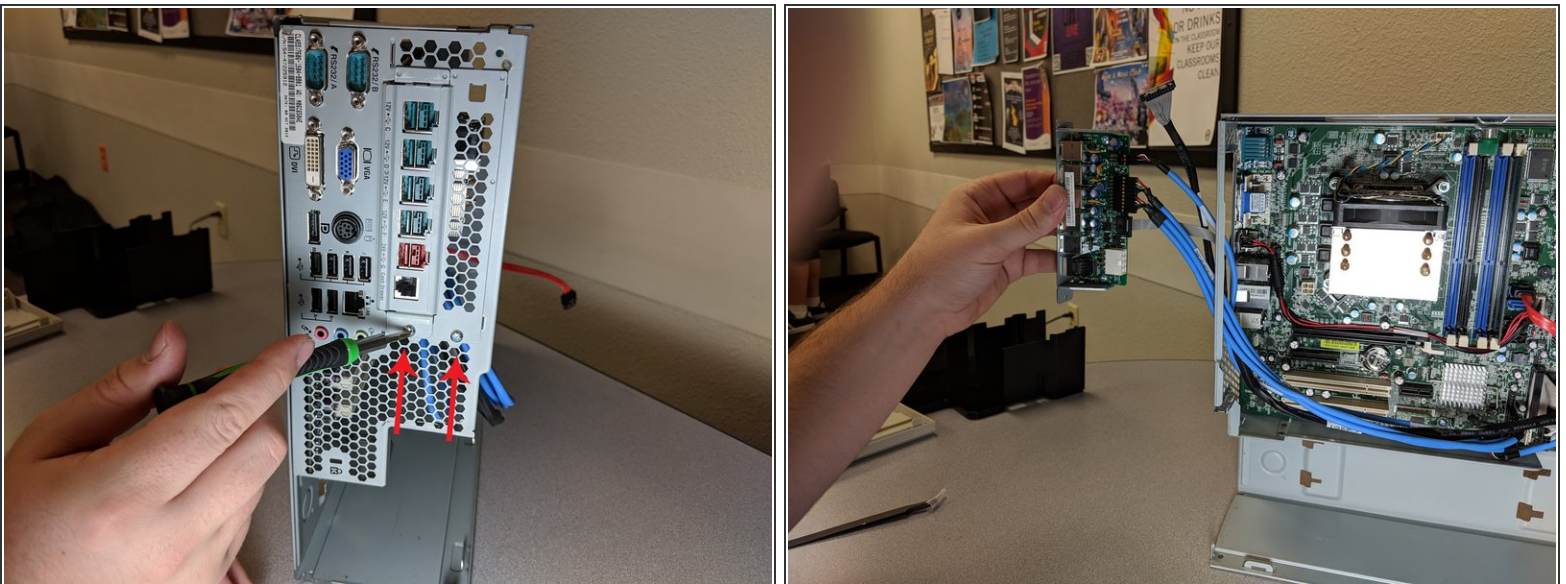
- Unplug the two marked cables from the hard drive.
- Press the button on the side of the register and lift until the latch disengages.

Step 3



- Disconnect all cables that are coming from the power supply.
- Be sure to check the normal 24 and 4 pin power supply cables. But also look around for any supporting components that require power.
- Remove the power supply by pulling it towards yourself . (As is you are looking down at the device).

Step 4



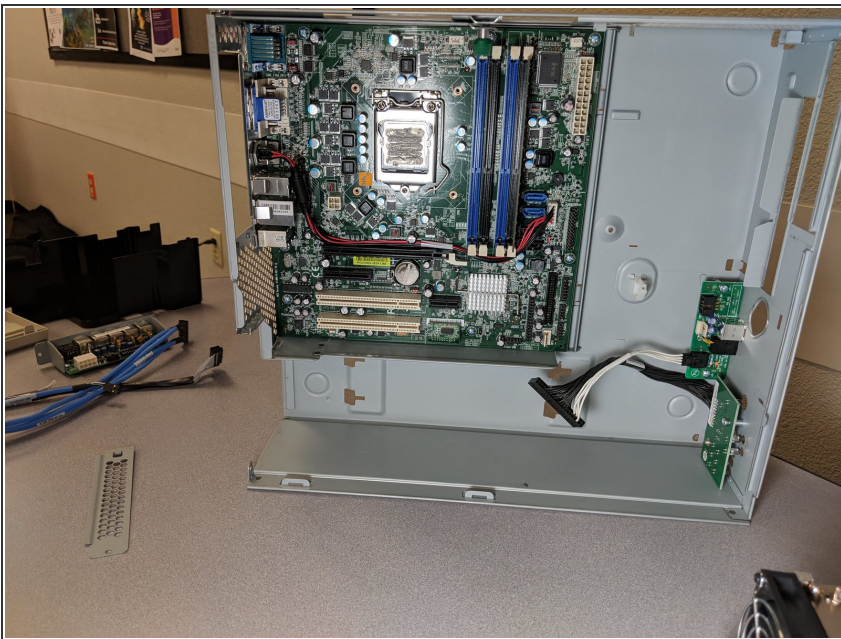
- Unscrew the two face plate screws.
- Remove the cables from the motherboard and pull the expansion board out.

Step 5



- Unscrew the 4 indicated screws from the heat sink and pull gently to remove
- ★ *When replacing, put on a coat of thermal conductive gel before reattaching heat sink.*

Step 6



- Remove the screw holding the motherboard in place.
- Remove the motherboard and replace.

To reassemble your device, follow these instructions in reverse order.