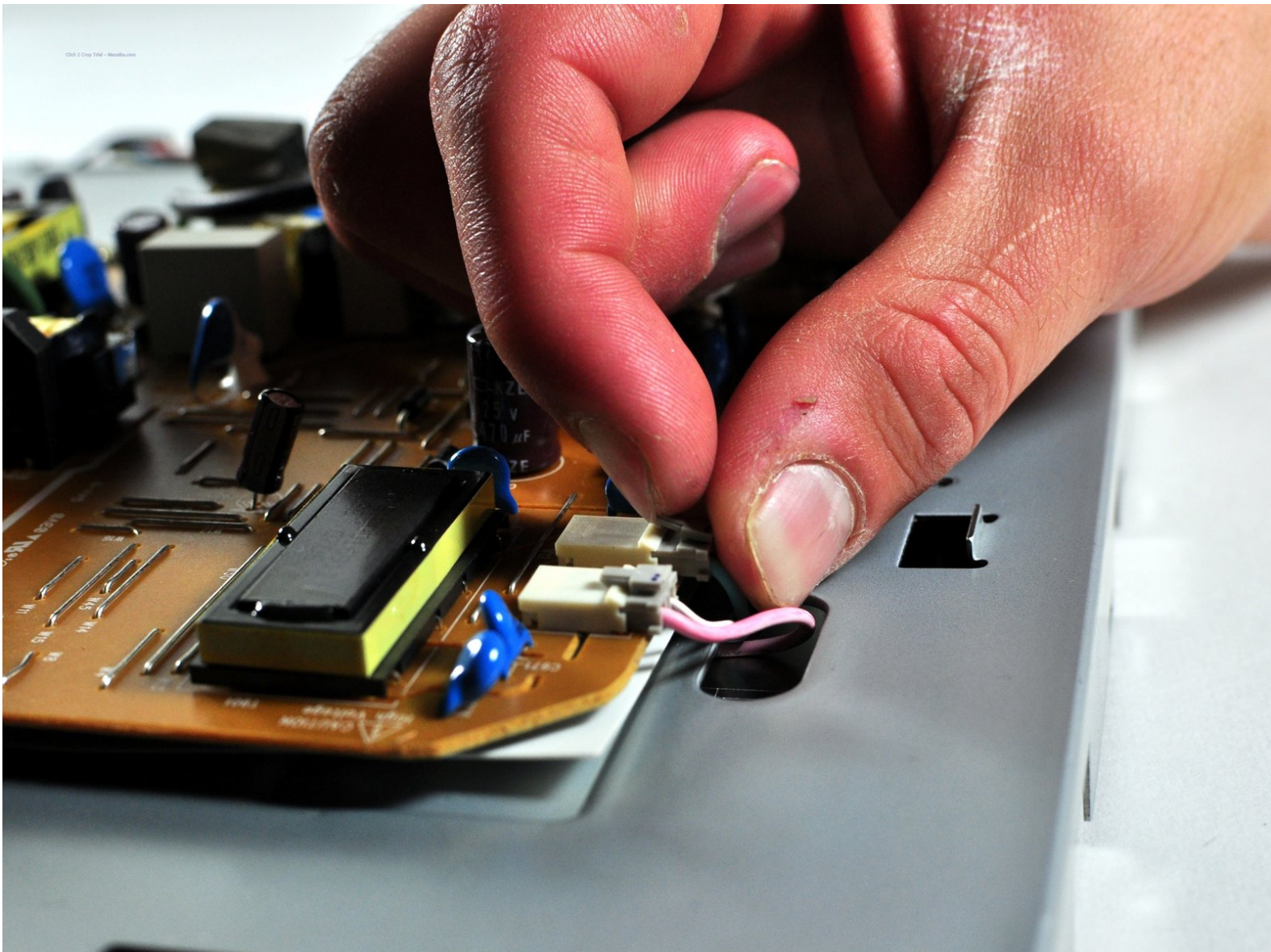




NEC LCD1770NX Screen Replacement

Use this guide to replace the LCD screen of the monitor.

Written By: John Patterson



INTRODUCTION

Replacing the screen isn't so much difficult as a lengthy process. There will be a lot of screws removed and a lot of parts coming off, so keep track of everything.



TOOLS:

- [Phillips #2 Screwdriver](#) (1)
- [Spudger](#) (1)
- [Phillips #000 Screwdriver](#) (1)



PARTS:

- [Samsung LTM170EU-L31](#) (1)

Step 1 — Stand



- Place the monitor face down on a clean, flat surface.

Step 2



- Firmly remove the back panel of the stand by pulling it up and away from the monitor.

Step 3



- Unscrew the two 6mm Phillips PH2 screws to detach the stand enclosure from the stand.

Step 4



- Firmly grasp the stand enclosure with your hand and slide it to base of stand.

Step 5



- Unscrew the two 14.5mm Phillips PH2 screws holding the stand to the monitor.

Step 6



- Lift the the stand straight up to remove it.

Step 7 — Monitor Enclosure




- Place the monitor screen face up.
- Pull the frame off by placing your fingers on the inside of the frame and pulling out and up, the frame should snap off.
- Continue your way around the screen.

Step 8

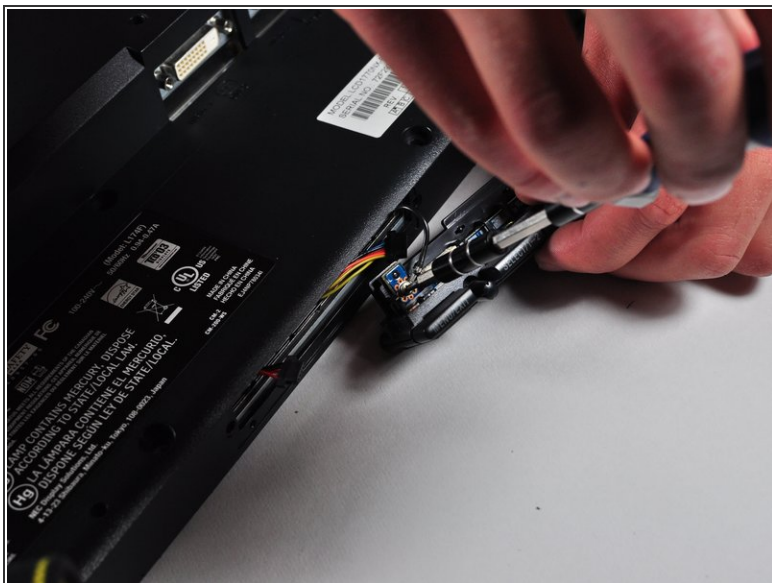


- Unscrew the two 7mm screws from the bottom of the button assembly.

 Do not pull the button assembly out too quickly or with too much force! Damage to the wires can occur.

- Pull the button assembly out a few inches and unplug the colored cables.

Step 9



- Unscrew the gold colored 7mm Phillips PH000 screw holding the button assembly to the monitor.
- Remove the button assembly from the monitor.

Step 10



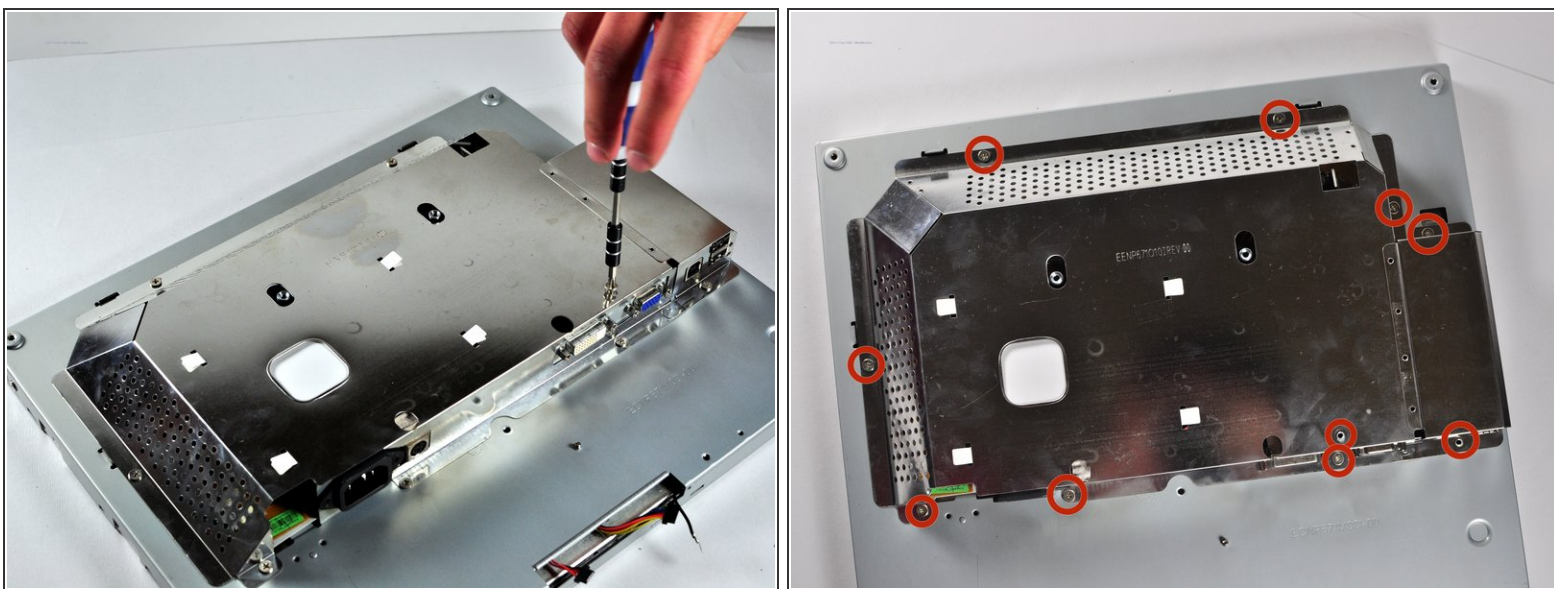
- With the monitor face-down, unscrew the 5 7mm Phillips PH2 screws around the outside of the enclosure.

Step 11



- Unscrew the 2 14.5mm Phillips PH2 screws located on the raised center of the enclosure.
- Carefully pull the enclosure off the monitor.

Step 12



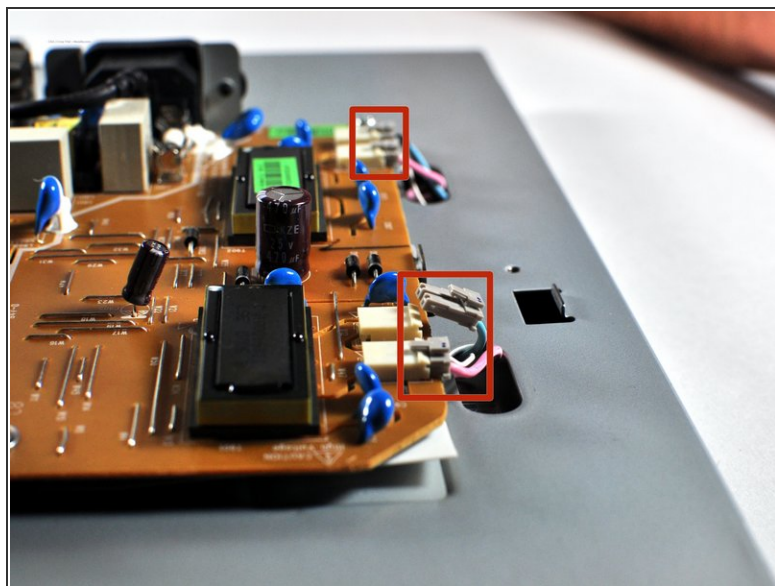
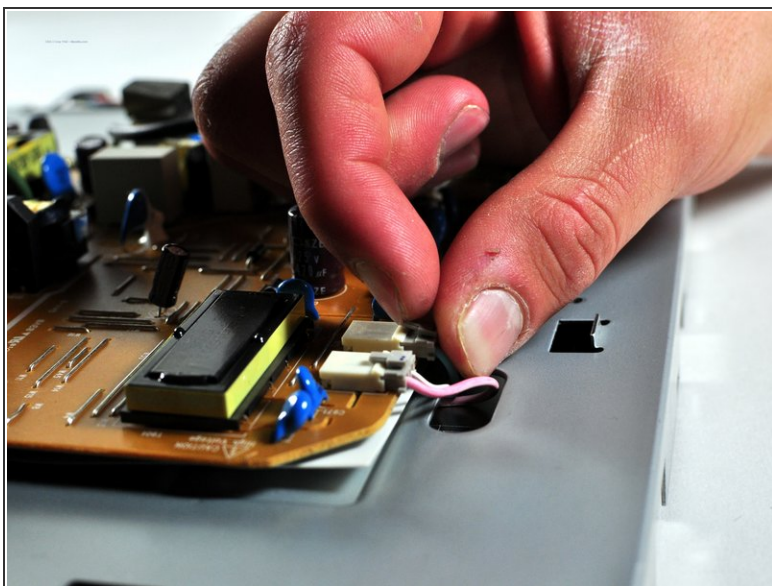
- Unscrew the 10 5mm Philips PH2 screws holding the metal casing to the monitor.

Step 13



- Pull the the metal casing off of the monitor to reveal the motherboards.

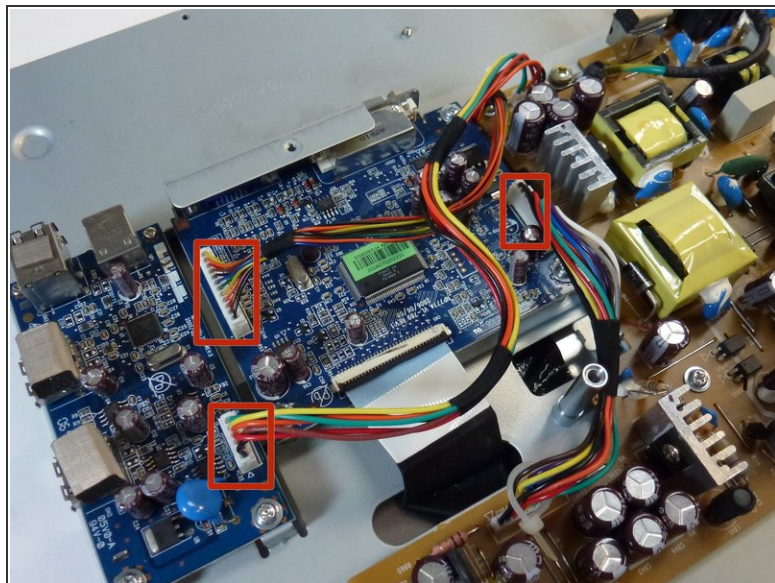
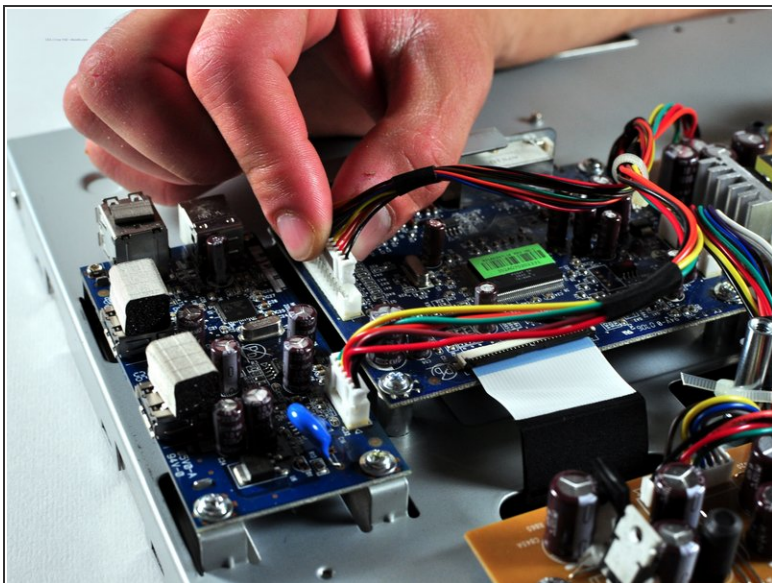
Step 14 — Screen



- Unplug the pink and light blue attachments from the side of the brown board by pulling up on the tabs and gently pulling the cord out.

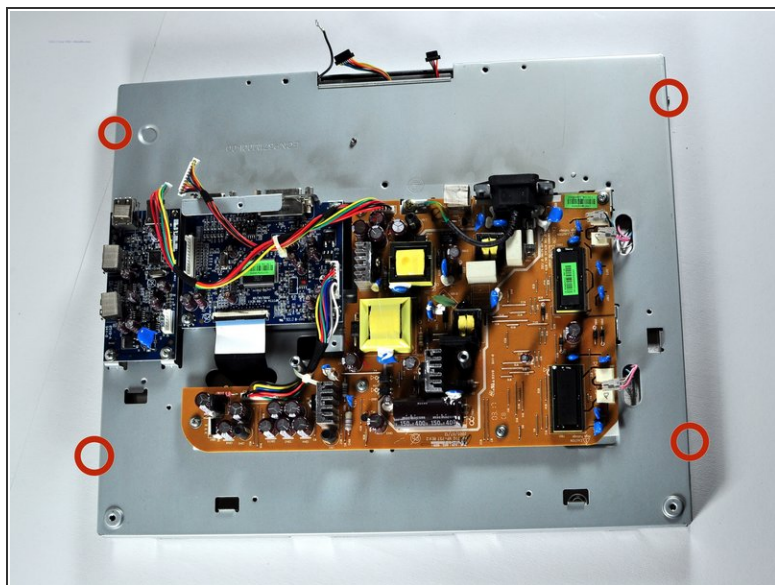
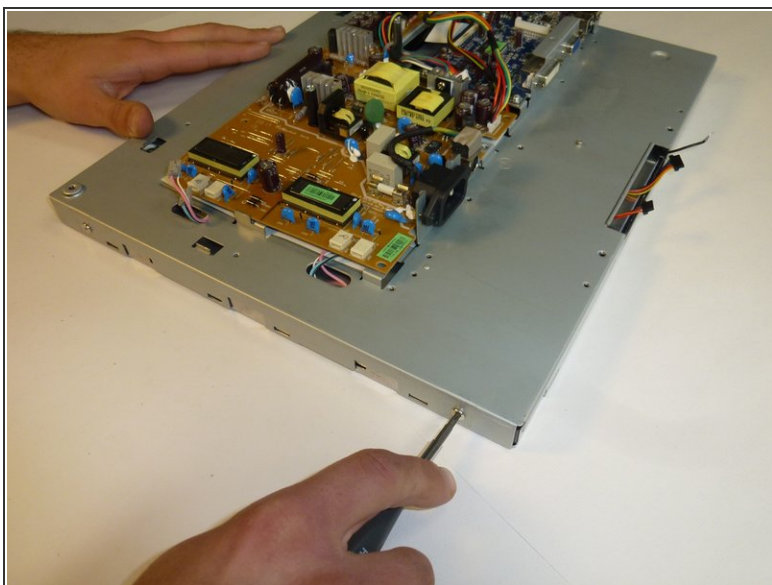
i Label where the plugs go.

Step 15



- Unplug the 3 multicolored cables from the blue board by gently wiggling them back and forth while pulling up.

Step 16



- Unscrew the 4 5mm Phillips PH2 screws on the sides of the monitor.

Step 17



- Begin opening the enclosure by slowly pulling up on back panel of the monitor.
- ☑ The enclosure should still be attached by a cable; this cable is held down by tape. Remove this tape.

Step 18



- Unplug the cable from the screen. It is still attached by a fragile black belt.
- ⓘ Use a spudger to break the black ceramic belt to free the screen from the rest, allowing it to be replaced.

To reassemble your device, follow these instructions in reverse order.